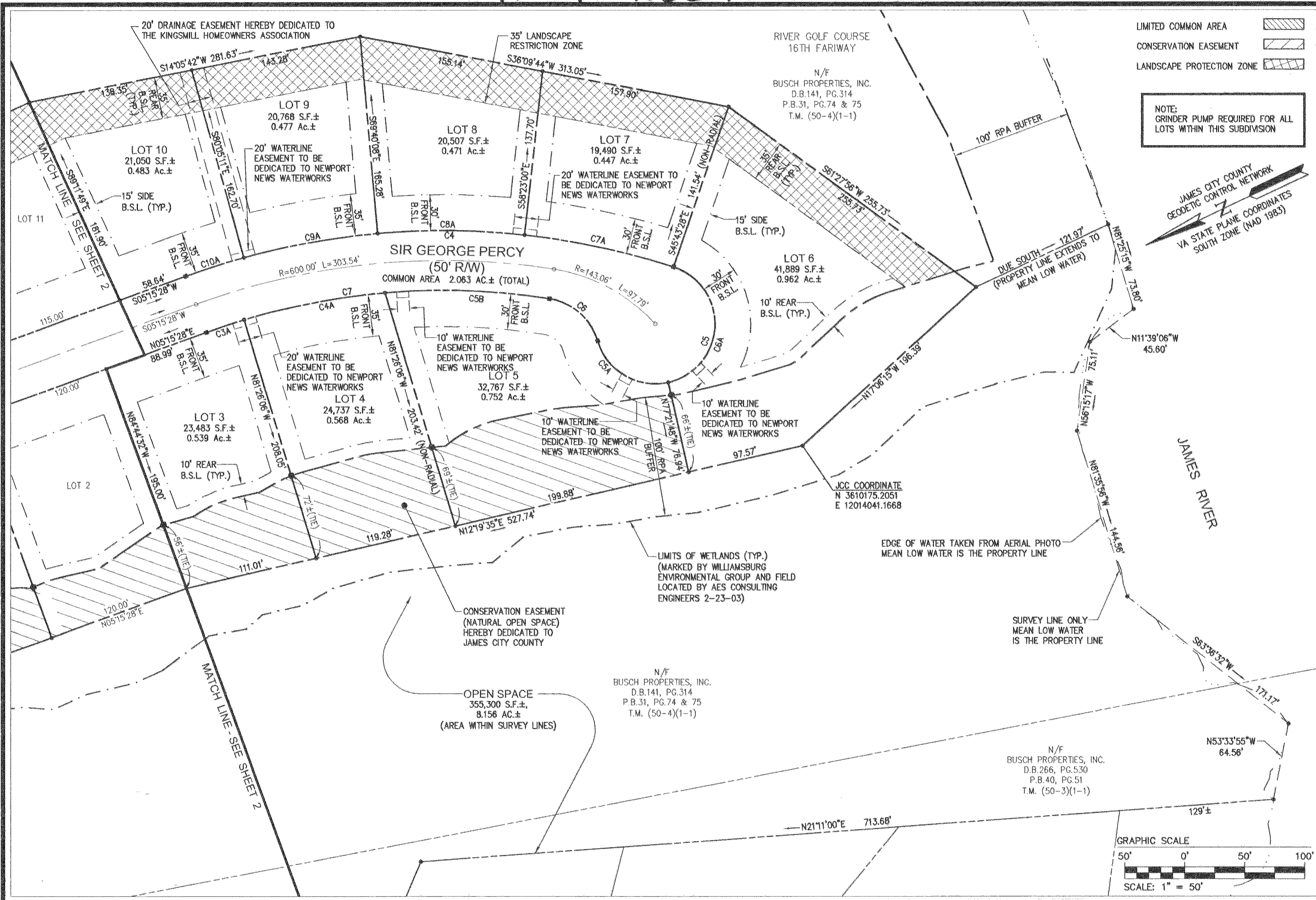


#040028848



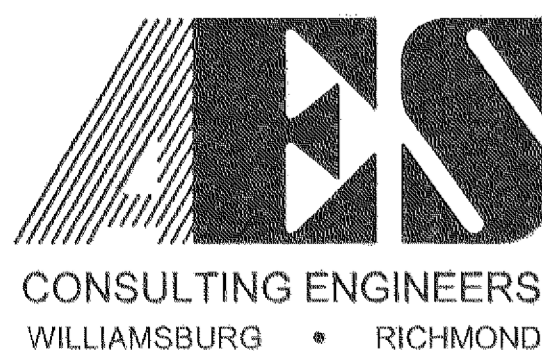
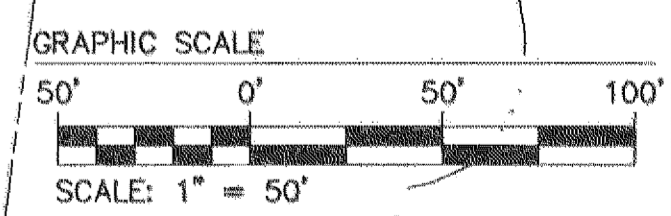
LIMITED COMMON AREA

CONSERVATION EASEMENT

LANDSCAPE PROTECTION ZONE

NOTE:
GRINDER PUMP REQUIRED FOR ALL
LOTS WITHIN THIS SUBDIVISION

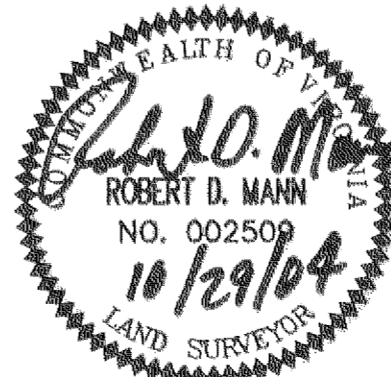
JAMES CITY COUNTY
GEODETTIC CONTROL NETWORK
VA STATE PLANE COORDINATES
SOUTH ZONE (NAD 1983)



5248 Olde Towne Road, Suite 1
Williamsburg, Virginia 23188
(757) 253-0040
Fax (757) 220-8994

PLAT OF SUBDIVISION
ARMISTEAD POINT
KINGSMILL ON THE JAMES
OWNER/DEVELOPER: BUSCH PROPERTIES, INC.

ROBERTS DISTRICT JAMES CITY COUNTY VIRGINIA



City of Williamsburg & County of James City Circuit Court: This PLAT was recorded on <i>10 November 2004</i>		
at 1:22 AM/PM	PB - PG	
DOCUMENT #	<i>040028848</i>	
BETSY B. WOOLRIDGE, CLERK		
<i>Betsy B. Woolridge</i> Clerk		
No.	DATE	REVISION / COMMENT / NOTE
1	10/29/04	REVISIONS PER COUNTY COMMENTS DATED 10/21/04
		RDM
		BY

Designed	Drawn
MAR/REC	EAW
Scale	Date
1"=50'	10/1/04
Project No.	
7753-15	
Drawing No.	
3 OF 3	