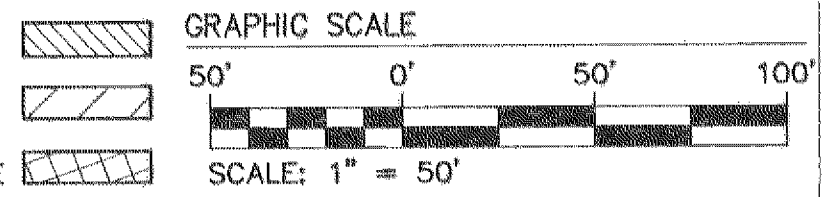
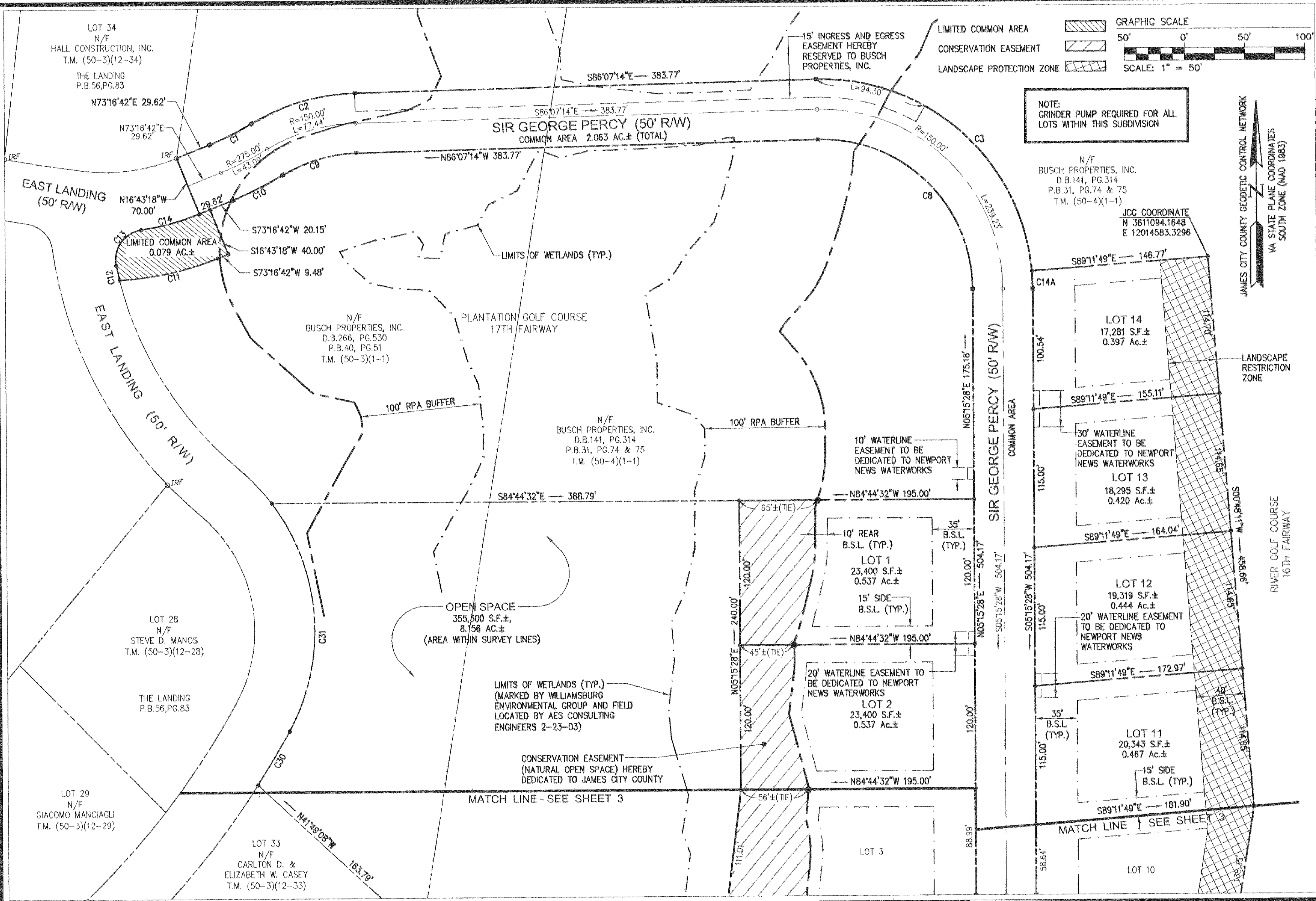


#040028848

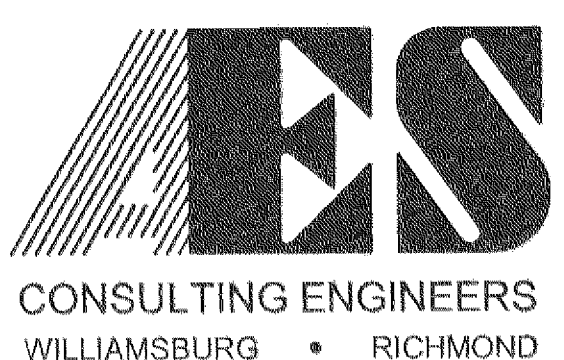


NOTE:
GRINDER PUMP REQUIRED FOR ALL
LOTS WITHIN THIS SUBDIVISION

N/F
BUSCH PROPERTIES, INC.
D.B.141, PG.314
P.B.31, PG.74 & 75
T.M. (50-4)(1-1)
JCC COORDINATE
N 3611094.1648
E 12014583.3298

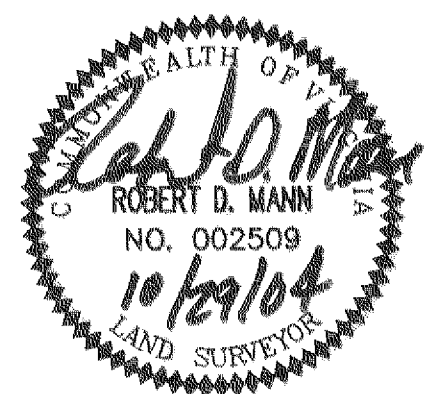
JAMES CITY COUNTY GEODETIC CONTROL NETWORK
VA STATE PLANE COORDINATES
SOUTH ZONE (NAD 1983)

RIVER GOLF COURSE
16TH FAIRWAY



5248 Olde Towne Road, Suite 1
Williamsburg, Virginia 23188
(757) 253-0040
Fax (757) 220-8994

PLAT OF SUBDIVISION
ARMISTEAD POINT
KINGSMILL ON THE JAMES
OWNER/DEVELOPER: BUSCH PROPERTIES, INC.
ROBERTS DISTRICT JAMES CITY COUNTY VIRGINIA



City of Williamsburg & County of James City	
Circuit Court	This PLAT was recorded on <u>10 November 2004</u>
at <u>1:22</u> AM/PM	PG. <u>1</u>
DOCUMENT #	<u>040028848</u>
BETSY B. WOOLRIDGE, CLERK	
<i>Betsy B. Woolridge</i> Clerk	
1	10/29/04 REVISIONS PER COUNTY COMMENTS DATED 10/21/04
No.	DATE REVISION / COMMENT / NOTE
	BY

Designed	Drawn
MAR/REC	EAW
Scale	Date
1"=50'	10/1/04
Project No.	
7753-15	
Drawing No.	
2 OF 3	