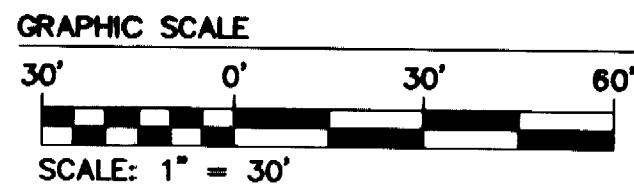
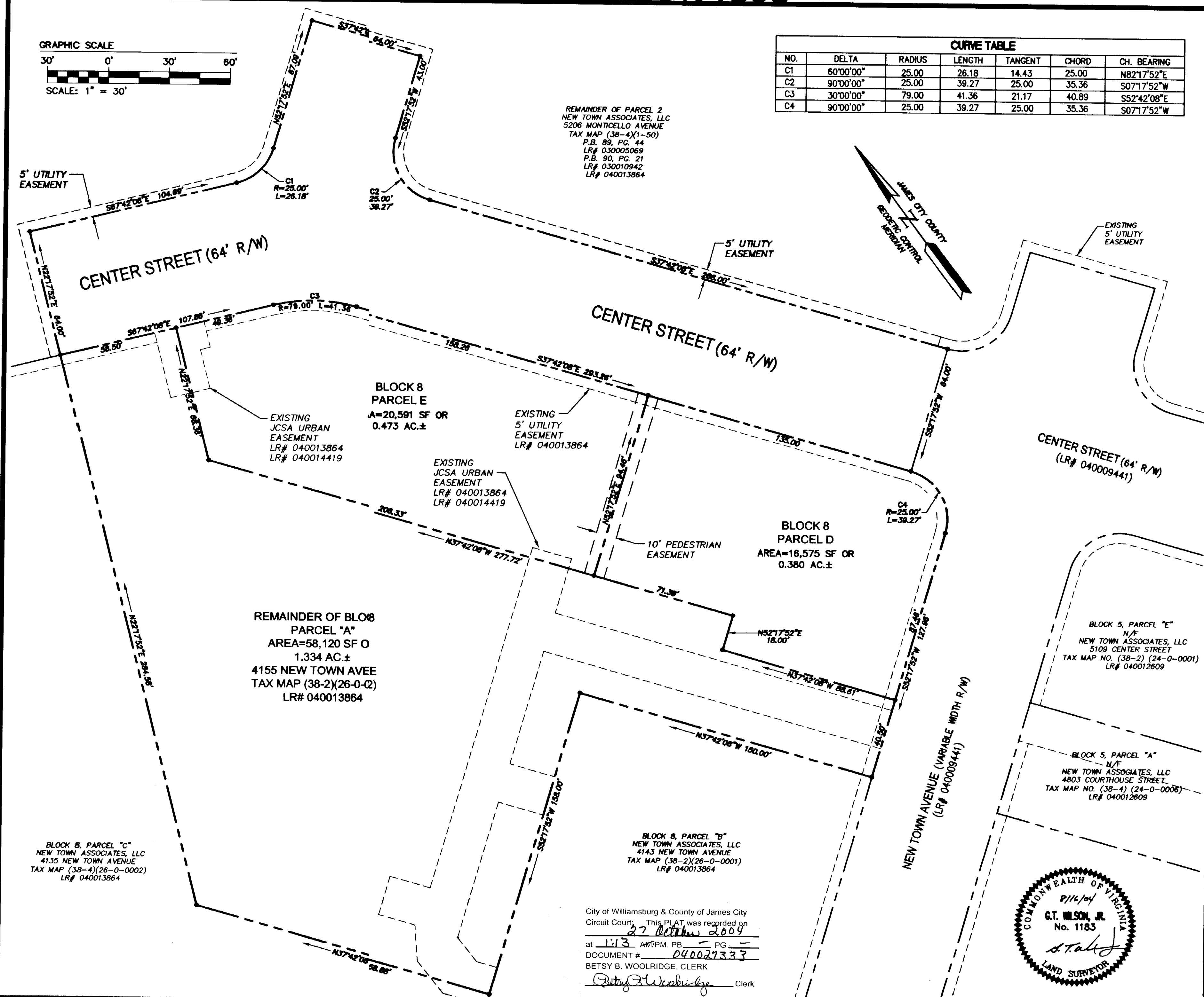
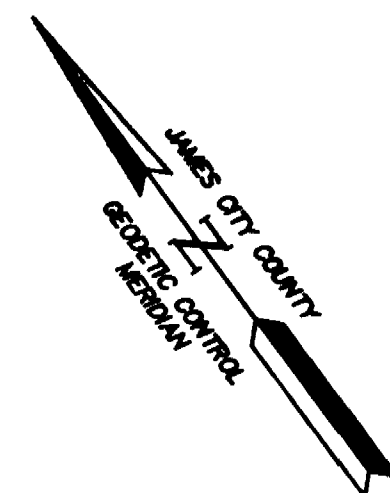


#040027333



CURVE TABLE						
NO.	DELTA	RADIUS	LENGTH	TANGENT	CHORD	CH. BEARING
C1	60°00'00"	25.00	26.18	14.43	25.00	N82°17'52"E
C2	90°00'00"	25.00	39.27	25.00	35.36	S07°17'52"W
C3	30°00'00"	79.00	41.36	21.17	40.89	S52°42'08"E
C4	90°00'00"	25.00	39.27	25.00	35.36	S07°17'52"W

REMAINDER OF PARCEL 2,
NEW TOWN ASSOCIATES, LLC
5206 MONTICELLO AVENUE
TAX MAP (38-4)(1-50)
P.B. 89, PG. 44
LR# 030005069
P.B. 90, PG. 21
LR# 030010942
LR# 040013864

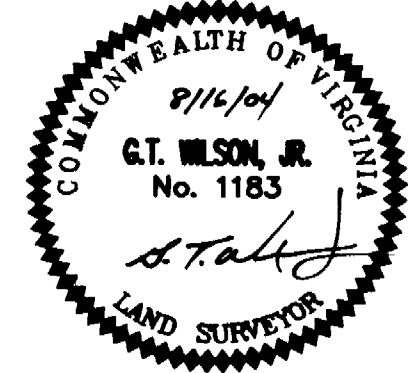


No.	DATE	REVISION / COMMENT / NOTE	JFS	BY
1	9/22/04			

6248 Olde Towne Road, Suite 1
Williamsburg, Virginia 23188
(757) 253-0040
Fax (757) 220-8994



PLAT OF SUBDIVISION
SHOWING A PORTION OF CENTER STREET,
BLOCK 8 PARCEL D, BLOCK 8 PARCEL E AND
THE REMAINDER OF BLOCK 8 PARCEL A
PREPARED FOR
NEW TOWN ASSOCIATES, LLC
BERKELEY DISTRICT JAMES CITY COUNTY VIRGINIA



City of Williamsburg & County of James City
Circuit Court. This PLAT was recorded on
27 October 2004
at 1:13 AM/PM, PG. —
DOCUMENT # 040027333
BETSY B. WOOLRIDGE, CLERK
Betsy B. Woolridge Clerk

Designed AES	Drawn JFS
Scale 1"=30'	Date 8/16/04
Project No. 6632-E-12	
Drawing No. 2 OF 2	

S:\Jobs\6632\E-12-2 Block B.dwg Plots\6632E\B\KBDP02.DWG 9/23/2004 9:04:28 AM EST