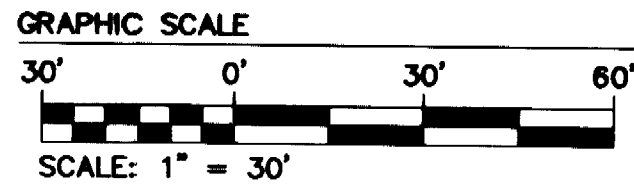
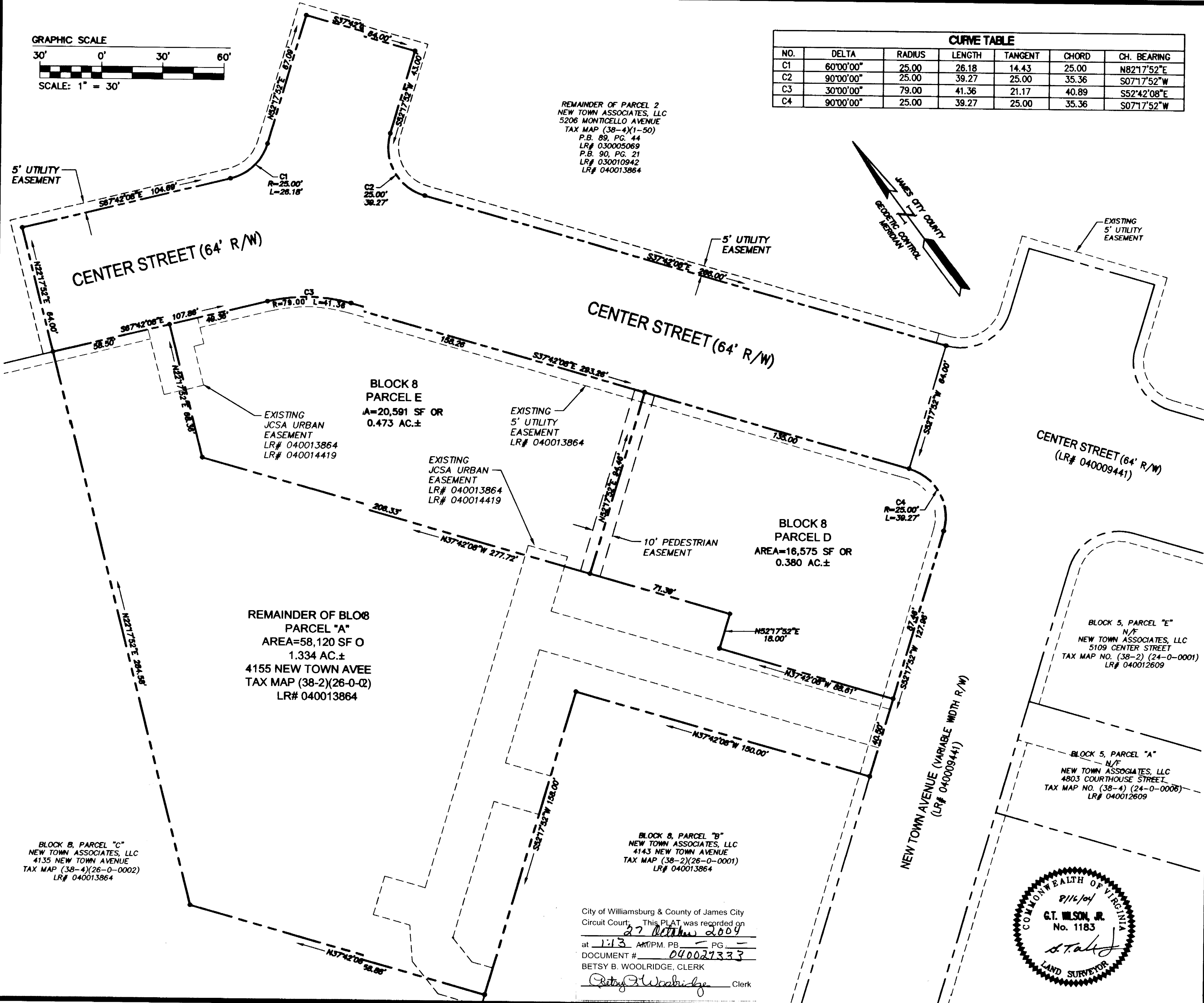
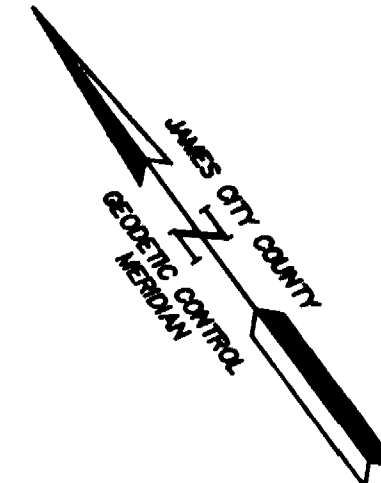


# #040027333



CURVE TABLE						
NO.	DELTA	RADIUS	LENGTH	TANGENT	CHORD	CH. BEARING
C1	60°00'00"	25.00	26.18	14.43	25.00	N82°17'52"E
C2	90°00'00"	25.00	39.27	25.00	35.36	S07°17'52"W
C3	30°00'00"	79.00	41.36	21.17	40.89	S52°42'08"E
C4	90°00'00"	25.00	39.27	25.00	35.36	S07°17'52"W

REMAINDER OF PARCEL 2,  
NEW TOWN ASSOCIATES, LLC  
5206 MONTICELLO AVENUE  
TAX MAP (38-4)(1-50)  
P.B. 89, PG. 44  
LR# 030005069  
P.B. 90, PG. 21  
LR# 030010942  
LR# 040013864



NO.	DATE	REVISION / COMMENT / NOTE	JFS	BY
1	9/22/04			

6248 Olde Towne Road, Suite 1  
Williamsburg, Virginia 23188  
(757) 253-0040  
Fax (757) 220-8994



PLAT OF SUBDIVISION  
SHOWING A PORTION OF CENTER STREET,  
BLOCK 8 PARCEL D, BLOCK 8 PARCEL E AND  
THE REMAINDER OF BLOCK 8 PARCEL A  
PREPARED FOR  
NEW TOWN ASSOCIATES, LLC  
BERKELEY DISTRICT JAMES CITY COUNTY VIRGINIA



City of Williamsburg & County of James City  
Circuit Court. This PLAT was recorded on  
27 October 2004  
at 1:13 AM/PM, PG. —  
DOCUMENT # 040027333  
BETSY B. WOOLRIDGE, CLERK  
Betsy B. Woolridge Clerk

Designed <b>AES</b>	Drawn <b>JFS</b>
Scale <b>1"=30'</b>	Date <b>8/16/04</b>
Project No. <b>6632-E-12</b>	
Drawing No. <b>2 OF 2</b>	

S:\Jobs\6632\E-12-2 Block B.dwg Plots\6632E\B\KBDP02.DWG 9/23/2004 9:04:28 AM EST