

#040024115

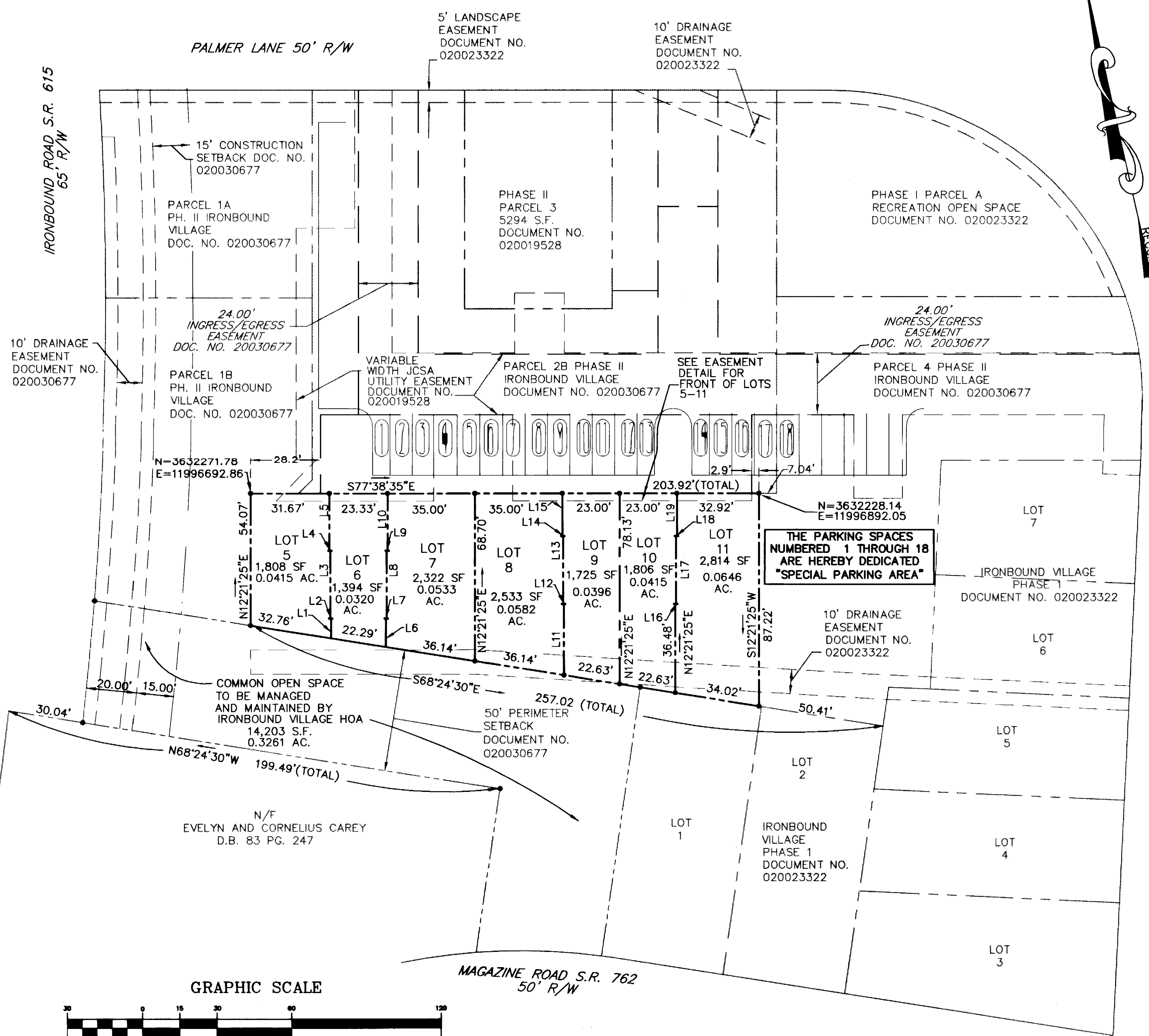
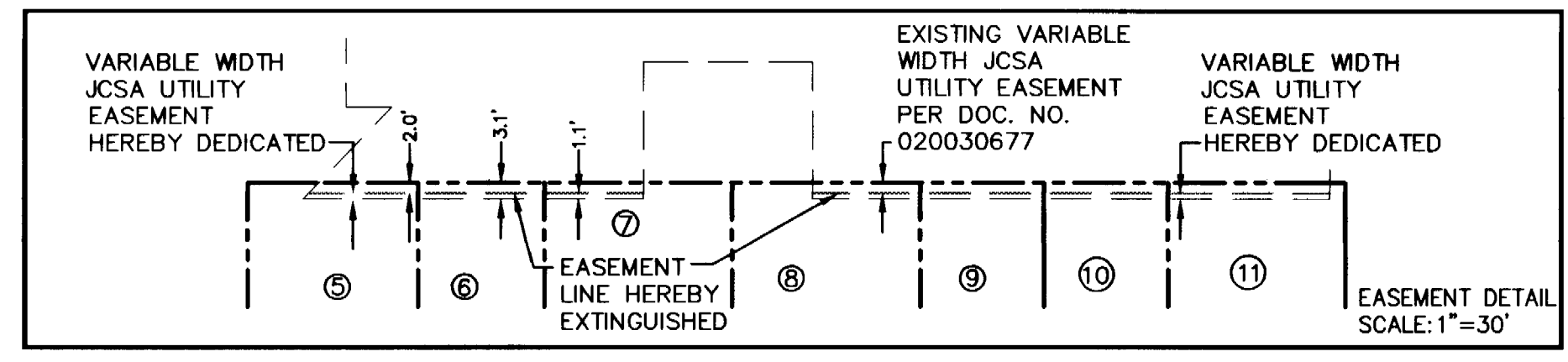
**SUBDIVISION PLAT
IRONBOUND VILLAGE
PHASE II PARCEL 2**
BEING THE PROPERTY OF
CUTTING EDGE DEVELOPMENT, LLC.

BERKELEY DISTRICT, JAMES CITY COUNTY, VIRGINIA
DATE: JANUARY 12, 2004
REVISED: JUNE 7, 2004
REVISED: 6/22/04
SCALE 1"=30'
SHEET 2 OF 2

**LANDMARK
DESIGN GROUP**
Engineers • Planners • Surveyors
Landscape Architects • Environmental Consultants

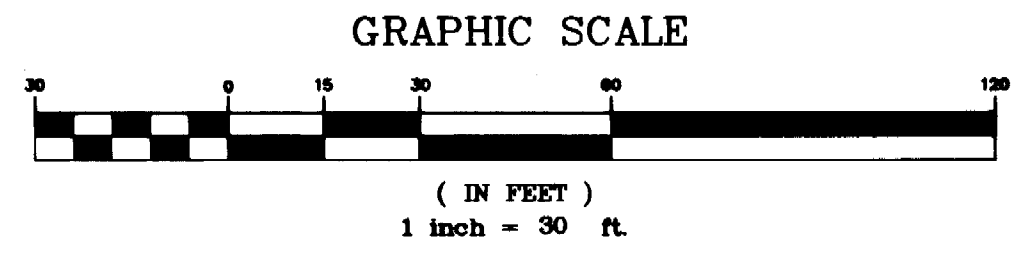
4029 Ironbound Road
Suite 100
Williamsburg, VA 23188
Tel. (757) 253-2975
Fax (757) 229-0049
Email: lmdg@landmarkdg.com

5544 Greenwich Road
Suite 200
Virginia Beach, VA 23462
Tel. (757) 473-2000
Fax (757) 497-7933
Email: lmdg@landmarkdg.com



THE PARKING SPACES
NUMBERED 1 THROUGH 18
ARE HEREBY DEDICATED
"SPECIAL PARKING AREA"

LINE	LENGTH	BEARING
L1	8.13'	S12°21'25"W
L2	0.33'	N77°38'35"W
L3	27.67'	S12°21'25"W
L4	0.33'	S77°38'35"E
L5	23.53'	S12°21'25"W
L6	11.71'	N12°21'25"E
L7	0.33'	S77°38'35"E
L8	27.67'	N12°21'25"E
L9	0.33'	S77°38'35"E
L10	23.53'	N12°21'25"E
L11	29.21'	N12°21'25"E
L12	0.33'	N77°38'35"W
L13	27.67'	N12°21'25"E
L14	0.33'	N77°38'35"W
L15	17.62'	N12°21'25"E
L16	0.33'	S77°38'35"E
L17	27.67'	N12°21'25"E
L18	0.33'	S77°38'35"E
L19	17.62'	N12°21'25"E



City of Williamsburg & County of James City
Circuit Court: This PLAT was recorded on
24 September 2004
at 11:50 AM/PM. PB. PG. -
DOCUMENT # 040024115
BETSY B. WOOLRIDGE, CLERK
Betsy B. Woolridge Clerk