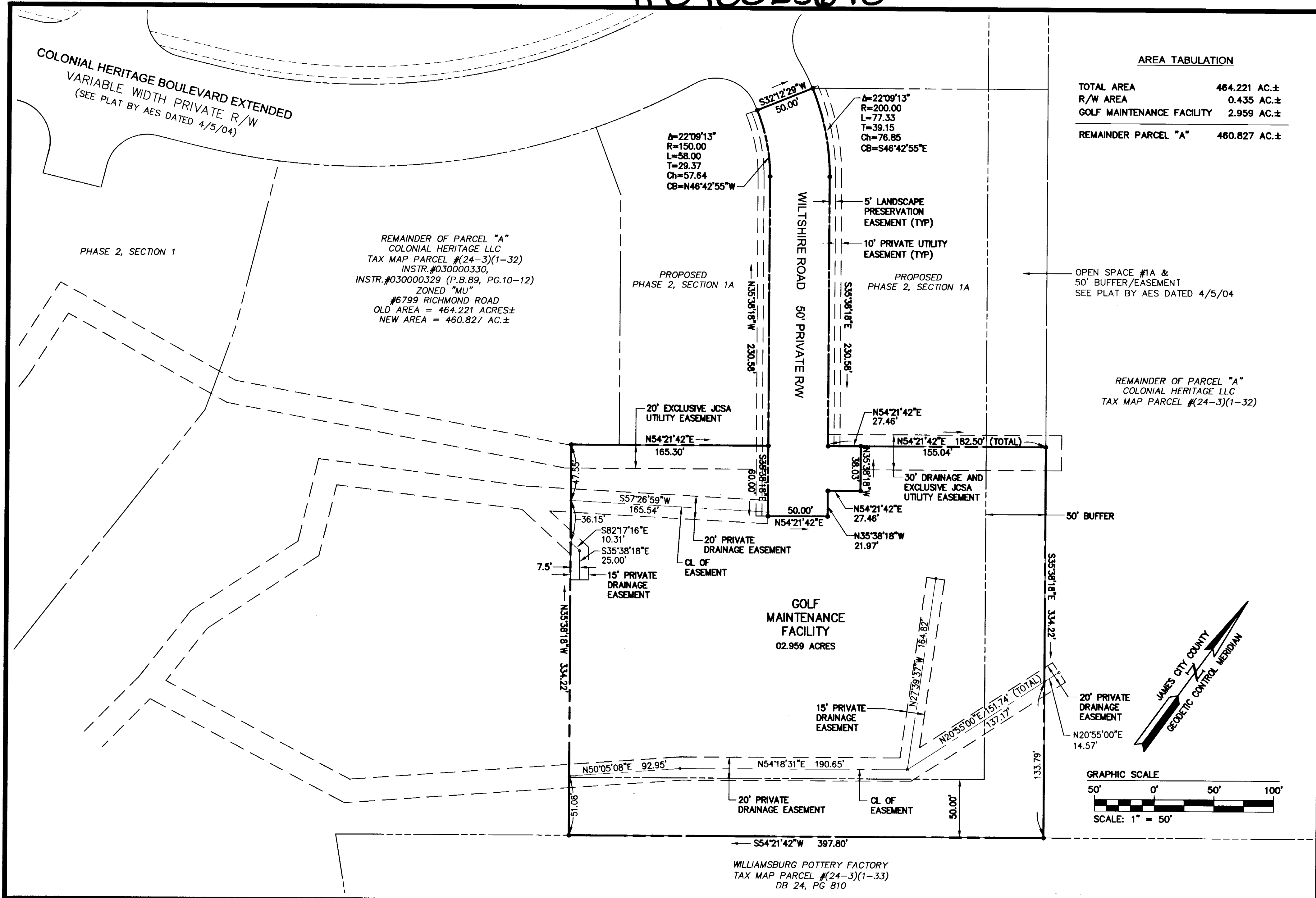


#040023678



AREA TABULATION

| | |
|---------------------------|--------------|
| TOTAL AREA | 464.221 AC.± |
| R/W AREA | 0.435 AC.± |
| GOLF MAINTENANCE FACILITY | 2.959 AC.± |
| REMAINDER PARCEL "A" | 460.827 AC.± |

REMAINDER OF PARCEL "A"
 COLONIAL HERITAGE LLC
 TAX MAP PARCEL #(24-3)(1-32)
 INSTR.#030000330,
 INSTR.#030000329 (P.B.89, PG.10-12)
 ZONED "MU"
 #6799 RICHMOND ROAD
 OLD AREA = 464.221 ACRES±
 NEW AREA = 460.827 AC.±

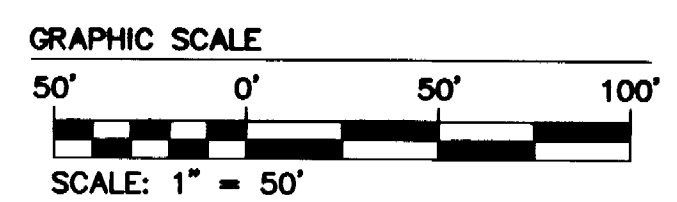
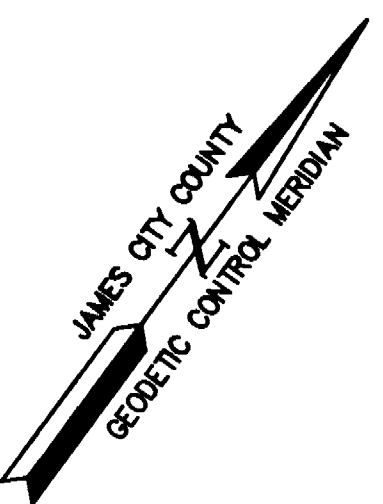
Δ=22°09'13"
 R=150.00
 L=58.00
 T=29.37
 Ch=57.64
 CB=N46°42'55"W

Δ=22°09'13"
 R=200.00
 L=77.33
 T=39.15
 Ch=76.85
 CB=S46°42'55"E

OPEN SPACE #1A &
 50' BUFFER/EASEMENT
 SEE PLAT BY AES DATED 4/5/04

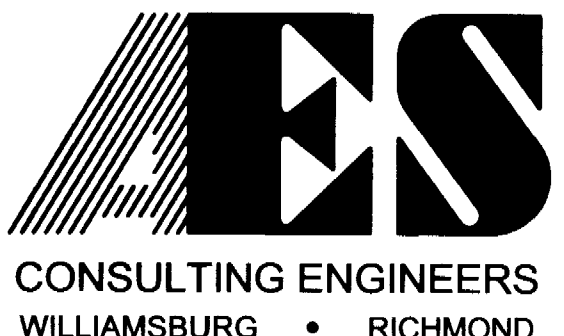
REMAINDER OF PARCEL "A"
 COLONIAL HERITAGE LLC
 TAX MAP PARCEL #(24-3)(1-32)

GOLF MAINTENANCE FACILITY
 02.959 ACRES



WILLIAMSBURG POTTERY FACTORY
 TAX MAP PARCEL #(24-3)(1-33)
 DB 24, PG 810

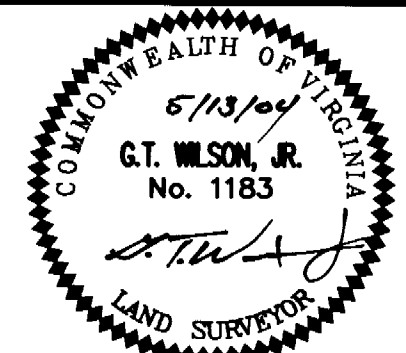
S:\Jobs\888123-Golf Maintenance Facility\dwg\Plats\CH-Golf Maint Plat\888123p02.dwg, 07/07/04 03:38:34 PM, heb



5248 Olde Towne Road, Suite 1
 Williamsburg, Virginia 23188
 (757) 253-0040
 Fax (757) 220-8994

PLAT SHOWING
 GOLF MAINTENANCE FACILITY
 AND RIGHT-OF-WAY
 PREPARED FOR COLONIAL HERITAGE LLC

STONEHOUSE DISTRICT JAMES CITY COUNTY VIRGINIA



| | |
|---|-----------------------------------|
| City of Williamsburg & County of James City Circuit Court. This PLAT was recorded on <u>20 September 2004</u> at <u>10:20</u> AM/PM PB _____ PG _____ DOCUMENT # <u>040023678</u> Betsy B. Woolridge, CLERK | |
| <u>Betsy B. Woolridge</u> Clerk | |
| 1 | 7/7/04 AS PER COMMENTS HWP |
| No. | DATE REVISION / COMMENT / NOTE BY |

| | |
|---------------------|--------------|
| Designed HWP | Drawn RMS |
| Scale 1"=50' | Date 5/13/04 |
| Project No. 8881-23 | |
| Drawing No. 2 OF 2 | |