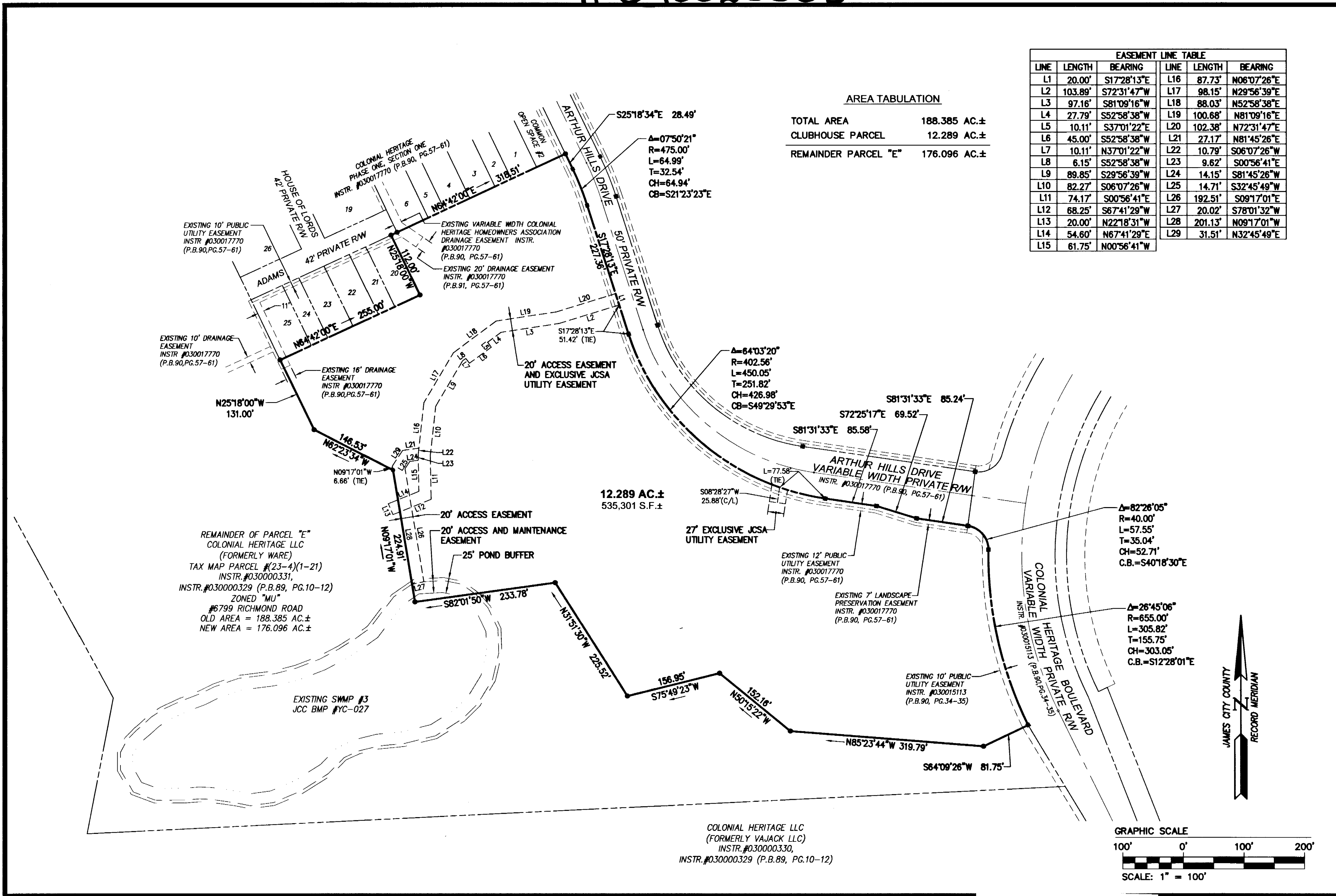


#040023383

EASEMENT LINE TABLE					
LINE	LENGTH	BEARING	LINE	BEARING	
L1	20.00'	S17°28'13"E	L16	87.73'	N06°07'26"E
L2	103.89'	S72°31'47"W	L17	98.15'	N29°56'39"E
L3	97.16'	S81°09'16"W	L18	88.03'	N52°58'38"E
L4	27.79'	S52°58'38"W	L19	100.68'	N81°09'16"E
L5	10.11'	S37°01'22"E	L20	102.38'	N72°31'47"E
L6	45.00'	S52°58'38"W	L21	27.17'	N81°45'26"E
L7	10.11'	N37°01'22"W	L22	10.79'	S06°07'26"W
L8	6.15'	S52°58'38"W	L23	9.62'	S00°56'41"E
L9	89.85'	S29°56'39"W	L24	14.15'	S81°45'26"W
L10	82.27'	S06°07'26"W	L25	14.71'	S32°45'49"W
L11	74.17'	S00°56'41"E	L26	192.51'	S09°17'01"E
L12	68.25'	S67°41'29"W	L27	20.02'	S78°01'32"W
L13	20.00'	N22°18'31"W	L28	201.13'	N09°17'01"W
L14	54.60'	N67°41'29"E	L29	31.51'	N32°45'49"E
L15	61.75'	N00°56'41"W			

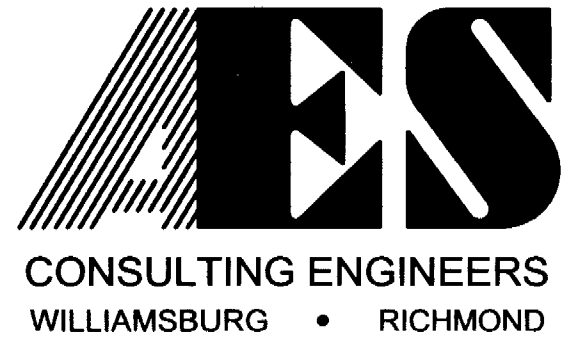
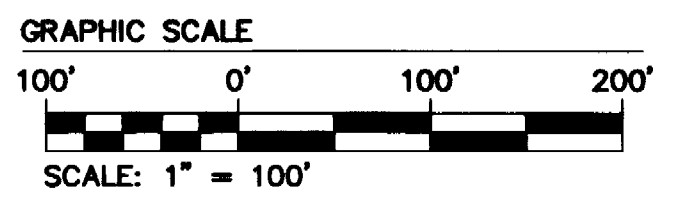
AREA TABULATION

TOTAL AREA	188.385 AC.±
CLUBHOUSE PARCEL	12.289 AC.±
REMAINDER PARCEL "E"	176.096 AC.±



REMAINDER OF PARCEL "E"
 COLONIAL HERITAGE LLC
 (FORMERLY WARE)
 TAX MAP PARCEL # (23-4)(1-21)
 INSTR. #030000331,
 INSTR. #030000329 (P.B.89, PG.10-12)
 ZONED "MU"
 #6799 RICHMOND ROAD
 OLD AREA = 188.385 AC.±
 NEW AREA = 176.096 AC.±

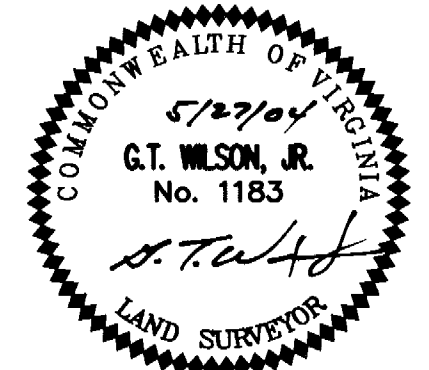
12.289 AC.±
 535,301 S.F.±



5248 Olde Towne Road, Suite 1
 Williamsburg, Virginia 23188
 (757) 253-0040
 Fax (757) 220-8994

PLAT OF SUBDIVISION
THE COLONIAL HERITAGE CLUB
 PREPARED FOR: COLONIAL HERITAGE LLC

STONEHOUSE DISTRICT JAMES CITY COUNTY VIRGINIA



1	7/8/04	REVISIONS PER COUNTY COMMENTS	HWP
No.	DATE	REVISION / COMMENT / NOTE	BY

City of Williamsburg & County of James City
 Circuit Court: This PLAT was recorded on
 at 9:40 AM on 9-16-2004 PG. 1
 DOCUMENT # 040023383
 BETSY B. WOOLRIDGE, CLERK
Betsy B. Woolridge Clerk

Designed HWP	Drawn EAW
Scale 1"=100'	Date 5/27/04
Project No. 8881-07	
Drawing No. 2 OF 2	

S:\jobs\888107-Club House\dwg\Plat\1888107P02_SUBD.dwg, 07/13/04 08:25:15 AM, heb