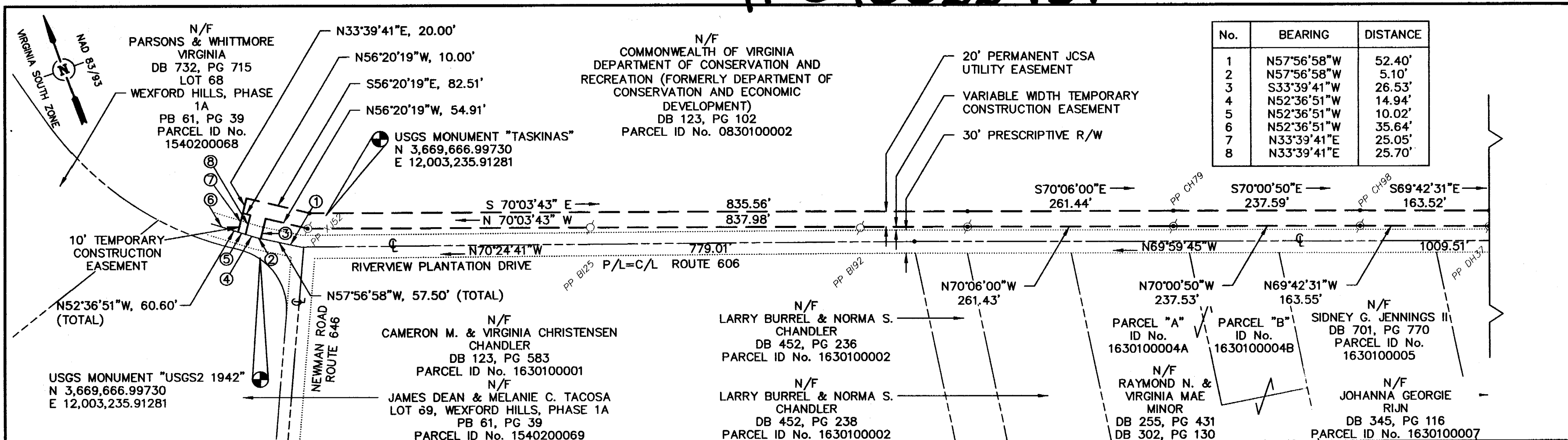
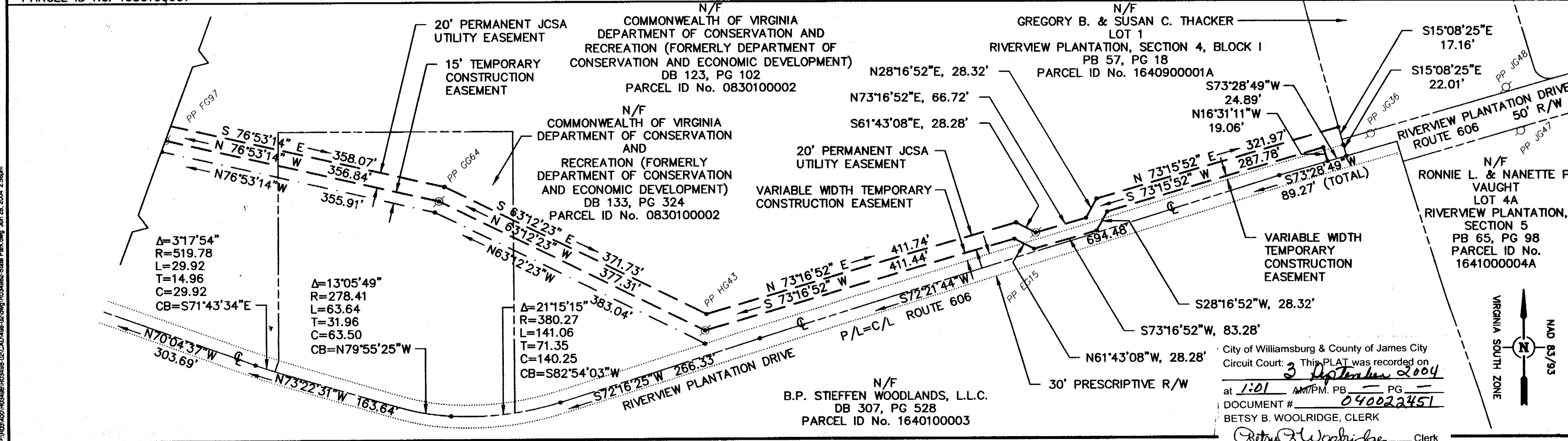
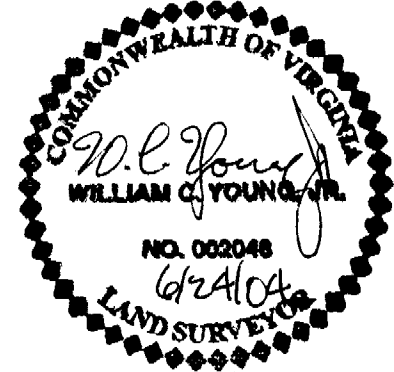
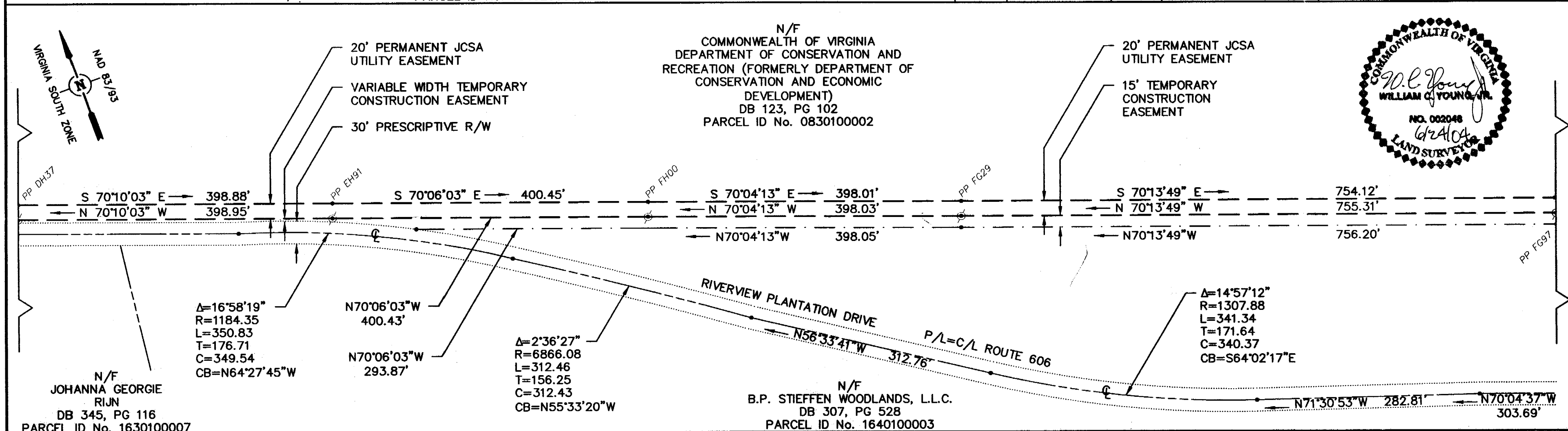


# # 040022451



No.	BEARING	DISTANCE
1	N57°56'58"W	52.40'
2	N57°56'58"W	5.10'
3	S33°39'41"W	26.53'
4	N52°36'51"W	14.94'
5	N52°36'51"W	10.02'
6	N52°36'51"W	35.64'
7	N33°39'41"E	25.05'
8	N33°39'41"E	25.70'



City of Williamsburg & County of James City Circuit Court: This PLAT was recorded on 3 September 2004 at 1:01 AM P.M. PG \_\_\_\_\_ DOCUMENT # 040022451 BETSY B. WOOLRIDGE, CLERK

*Betsy Woolridge* Clerk

**Draper Aden Associates**  
 Engineering ♦ Surveying ♦ Environmental Services

Hampton Roads, VA  
 11828 Fishing Point Drive, Suite 118  
 Newport News, VA 23606  
 757-599-9800 Fax: 757-599-3864  
 www.daa.com

Blackburg, VA  
 Richmond, VA  
 Charlottesville, VA  
 Raleigh-Durham, NC



**A COMPILED PLAT SHOWING A 20' PERMANENT JCSA EASEMENT AND A VARIABLE WIDTH TEMPORARY CONSTRUCTION EASEMENT ACROSS TWO PARCELS OF LAND STONEHOUSE DISTRICT, JAMES CITY COUNTY, VIRGINIA**

REVISIONS	
6/28/04	ADJ NAME
DESIGNED BY:	BJU
DRAWN BY:	BJU
CHECKED BY:	EGN
SCALE:	1" = 100'
DATE:	JUNE 24, 2004
PROJECT NUMBER:	<b>R03498-02</b>
1 OF 1	