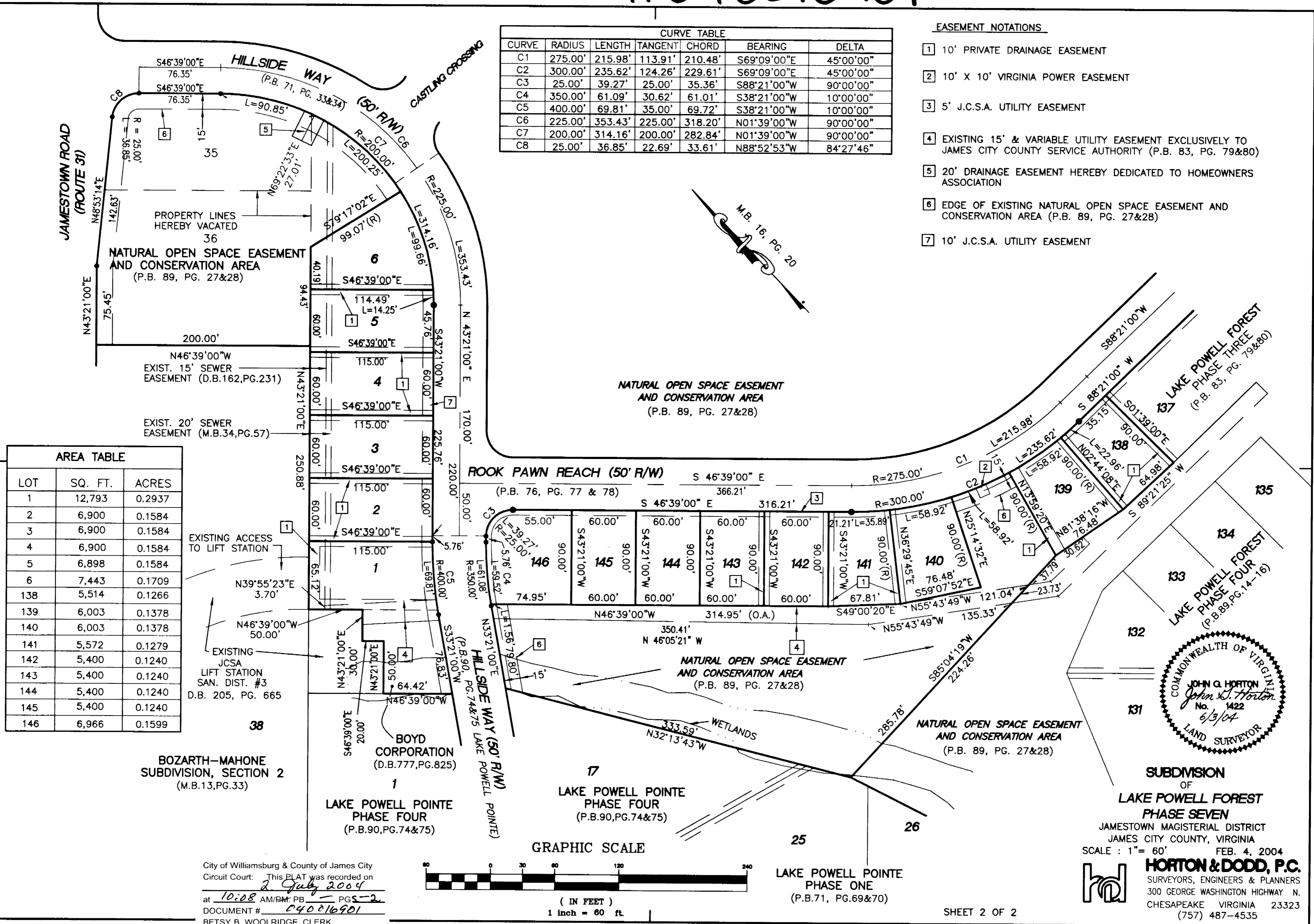


#040016901

CURVE TABLE						
CURVE	RADIUS	LENGTH	TANGENT	CHORD	BEARING	DELTA
C1	275.00'	215.98'	113.91'	210.48'	S69°09'00"E	45°00'00"
C2	300.00'	235.62'	124.26'	229.61'	S69°09'00"E	45°00'00"
C3	25.00'	39.27'	25.00'	35.36'	S88°21'00"W	90°00'00"
C4	350.00'	61.09'	30.62'	61.01'	S38°21'00"W	10°00'00"
C5	400.00'	69.81'	35.00'	69.72'	S38°21'00"W	10°00'00"
C6	225.00'	353.43'	225.00'	318.20'	N01°39'00"W	90°00'00"
C7	200.00'	314.16'	200.00'	282.84'	N01°39'00"W	90°00'00"
C8	25.00'	36.85'	22.69'	33.61'	N88°52'53"W	84°27'46"

- EASEMENT NOTATIONS**
- 1 10' PRIVATE DRAINAGE EASEMENT
 - 2 10' X 10' VIRGINIA POWER EASEMENT
 - 3 5' J.C.S.A. UTILITY EASEMENT
 - 4 EXISTING 15' & VARIABLE UTILITY EASEMENT EXCLUSIVELY TO JAMES CITY COUNTY SERVICE AUTHORITY (P.B. 83, PG. 79&80)
 - 5 20' DRAINAGE EASEMENT HEREBY DEDICATED TO HOMEOWNERS ASSOCIATION
 - 6 EDGE OF EXISTING NATURAL OPEN SPACE EASEMENT AND CONSERVATION AREA (P.B. 89, PG. 27&28)
 - 7 10' J.C.S.A. UTILITY EASEMENT



AREA TABLE		
LOT	SQ. FT.	ACRES
1	12,793	0.2937
2	6,900	0.1584
3	6,900	0.1584
4	6,900	0.1584
5	6,898	0.1584
6	7,443	0.1709
138	5,514	0.1266
139	6,003	0.1378
140	6,003	0.1378
141	5,572	0.1279
142	5,400	0.1240
143	5,400	0.1240
144	5,400	0.1240
145	5,400	0.1240
146	6,966	0.1599

BOZARTH-MAHON SUBDIVISION, SECTION 2 (M.B.13,PG.33)

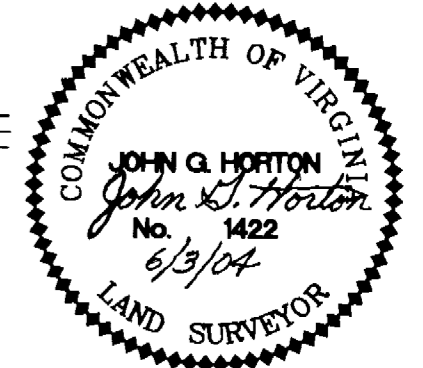
EXISTING ACCESS TO LIFT STATION

EXISTING JCSA LIFT STATION SAN. DIST. #3 D.B. 205, PG. 665

BOYD CORPORATION (D.B.777,PG.825)

City of Williamsburg & County of James City Circuit Court: This PLAT was recorded on 2 July 2004 at 10:08 AM P.M. PG. 2 DOCUMENT # 040016901 BETSY B. WOOLRIDGE, CLERK

Betsy B. Woolridge Clerk



SUBDIVISION OF LAKE POWELL FOREST PHASE SEVEN JAMESTOWN MAGISTERIAL DISTRICT JAMES CITY COUNTY, VIRGINIA SCALE: 1" = 60' FEB. 4, 2004

HORTON & DODD, P.C.
SURVEYORS, ENGINEERS & PLANNERS
300 GEORGE WASHINGTON HIGHWAY N.
CHESAPEAKE VIRGINIA 23323
(757) 487-4535