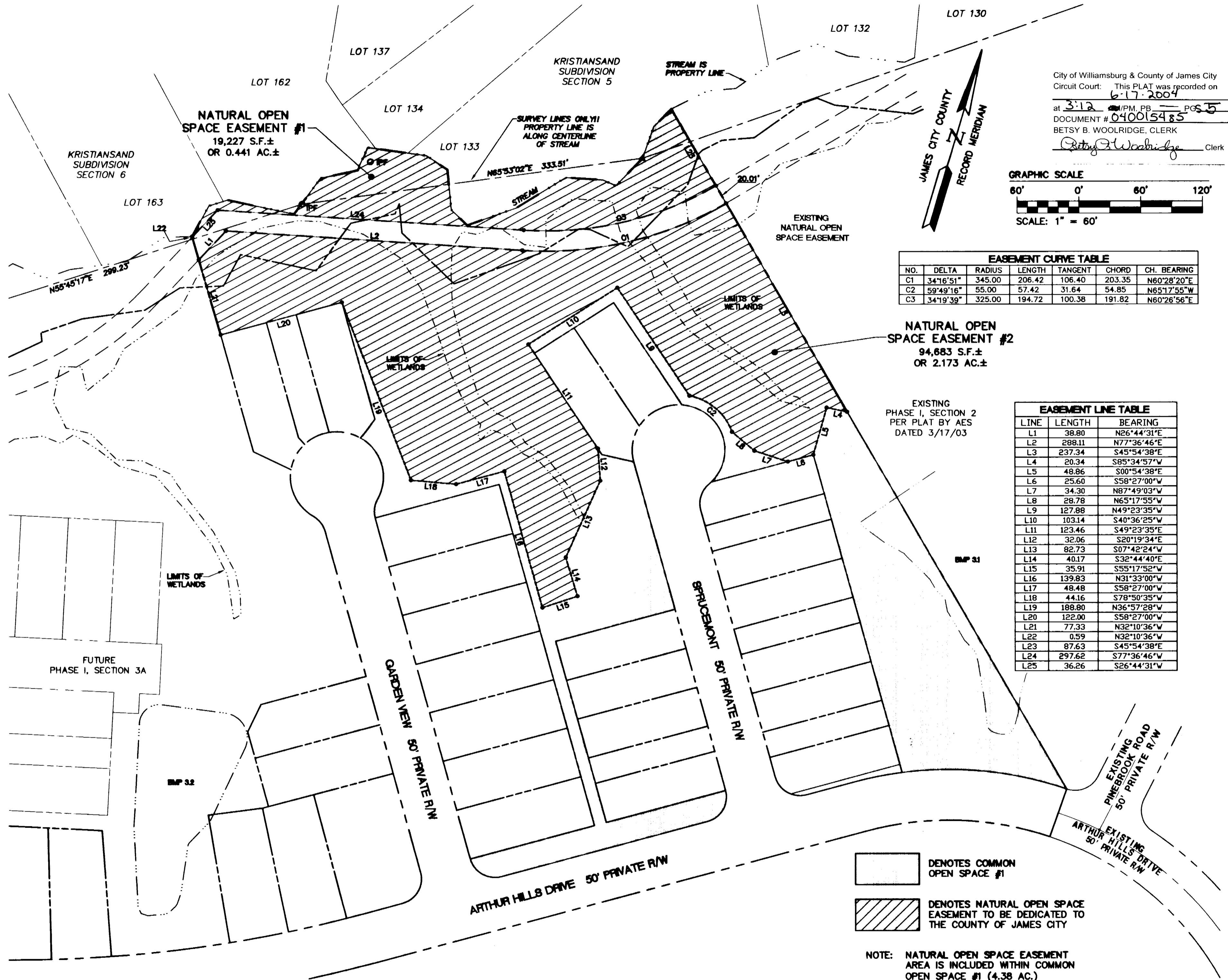
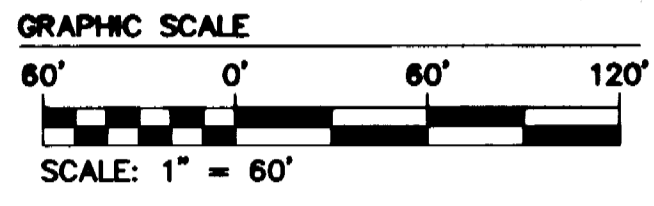


#040015485



City of Williamsburg & County of James City
 Circuit Court: This PLAT was recorded on
 6-17-2004
 at 3:12 P.M. PG 5
 DOCUMENT # 040015485
 BETSY B. WOOLRIDGE, CLERK
Betsy B. Woolridge Clerk



EASEMENT CURVE TABLE

NO.	DELTA	RADIUS	LENGTH	TANGENT	CHORD	CH. BEARING
C1	34°16'51"	345.00	206.42	106.40	203.35	N60°28'20"E
C2	59°49'16"	55.00	57.42	31.64	54.85	N65°17'55"W
C3	34°19'39"	325.00	194.72	100.38	191.82	N60°26'56"E

NATURAL OPEN SPACE EASEMENT #2
 94,683 S.F.±
 OR 2.173 AC.±

EXISTING PHASE I, SECTION 2
 PER PLAT BY AES
 DATED 3/17/03

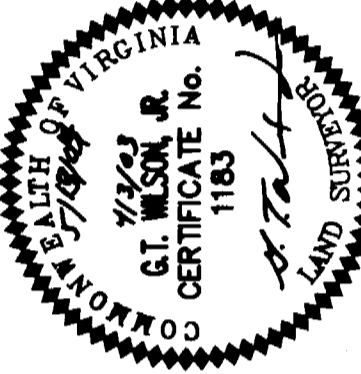
EASEMENT LINE TABLE

LINE	LENGTH	BEARING
L1	38.80	N26°44'31"E
L2	288.11	N77°36'46"E
L3	237.34	S45°54'38"E
L4	20.34	S85°34'57"W
L5	48.86	S00°54'38"E
L6	25.60	S58°27'00"W
L7	34.30	N87°49'03"W
L8	28.78	N65°17'55"W
L9	127.88	N49°23'35"W
L10	103.14	S40°36'25"W
L11	123.46	S49°23'35"E
L12	32.06	S20°19'34"E
L13	82.73	S07°42'24"W
L14	40.17	S32°44'40"E
L15	35.91	S55°17'52"W
L16	139.83	N31°33'00"W
L17	48.48	S58°27'00"W
L18	44.16	S78°50'35"W
L19	188.80	N36°57'28"W
L20	122.00	S58°27'00"W
L21	77.33	N32°10'36"W
L22	0.59	N32°10'36"W
L23	87.63	S45°54'38"E
L24	297.62	S77°36'46"W
L25	36.26	S26°44'31"W

- DENOTES COMMON OPEN SPACE #1
- DENOTES NATURAL OPEN SPACE EASEMENT TO BE DEDICATED TO THE COUNTY OF JAMES CITY

NOTE: NATURAL OPEN SPACE EASEMENT AREA IS INCLUDED WITHIN COMMON OPEN SPACE #1 (4.38 AC.)

NO.	DATE	REVISION / COMMENT / NOTE
5	5/13/04	REVISED PER COUNTY COMMENTS
4	4/2/04	REVISED JCSA EASEMENT
3	9/23/03	REVISED UTILITY EASEMENTS FROM PUBLIC TO PRIVATE
2	8/4/03	REVISED LOTS 32-35
1	7/2/03	REVISED PER COUNTY COMMENTS



CONSULTING ENGINEERS
 5248 Old Towne Road, Suite 1
 Williamsburg, Virginia 23188
 (757) 253-0040
 Fax (757) 220-8994

PLAT OF SUBDIVISION
COLONIAL HERITAGE
 PHASE ONE, SECTION THREE
 LOTS 1-59
 PREPARED FOR COLONIAL HERITAGE LLC

DESIGNED: HWP
 DRAWN: JFS
 SCALE: 1"=60'
 DATE: 4/3/03

Project No. 8881-09
 Drawing No. 5 OF 5

STONEHOUSE DISTRICT JAMES CITY COUNTY VIRGINIA