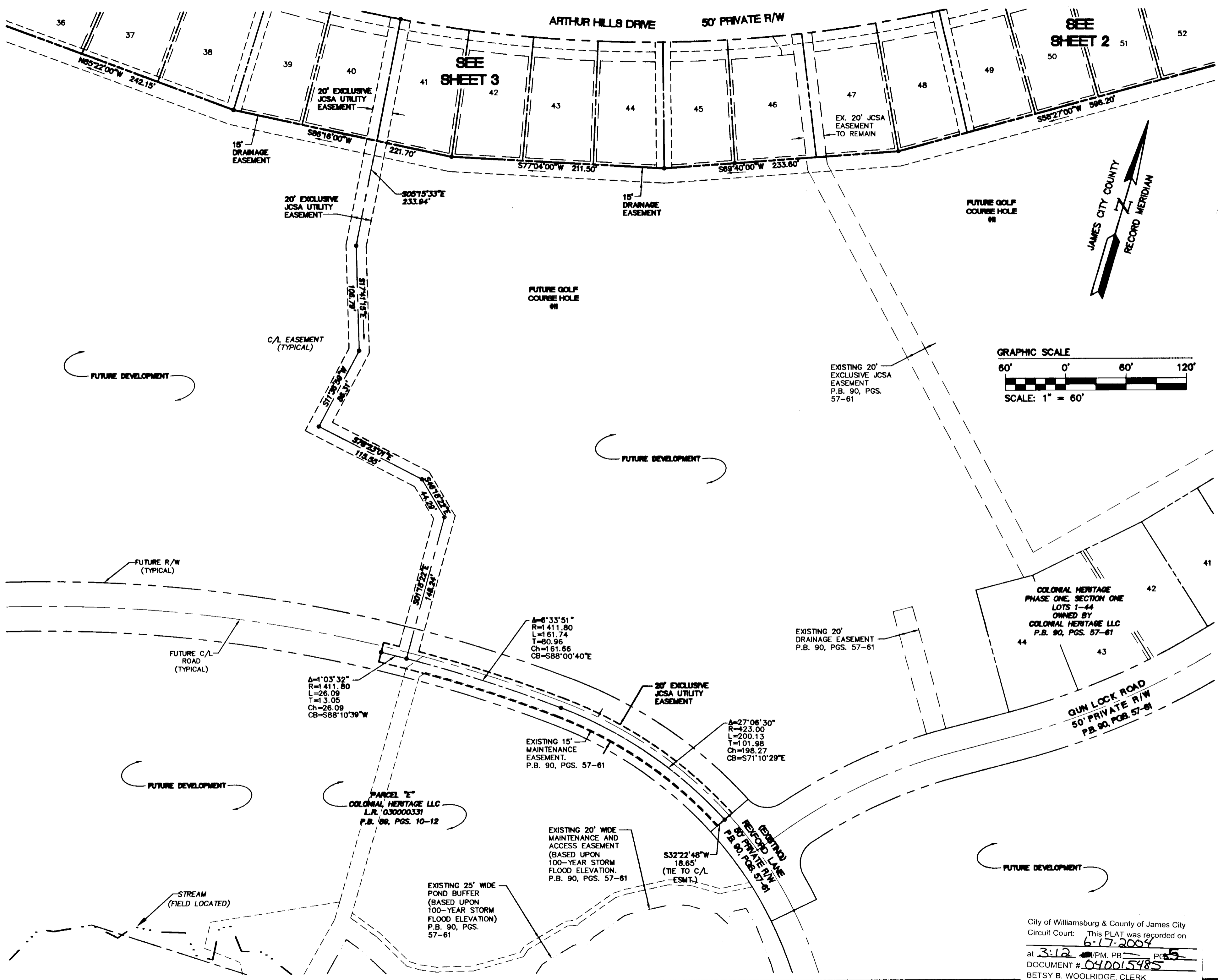


# #040015485



No.	DATE	REVISION / COMMENT / NOTE
5	5/13/04	REVISED PER COUNTY COMMENTS
4	4/2/04	REVISED JCSA EASEMENT
3	9/23/03	REVISED UTILITY EASEMENTS FROM PUBLIC TO PRIVATE
2	8/4/03	REVISED LOTS 32-35
1	7/2/03	REVISED PER COUNTY COMMENTS



**CONSULTING ENGINEERS**  
 5248 Old Towne Road, Suite 1  
 Williamsburg, Virginia 23188  
 (757) 263-0040  
 Fax (757) 250-8994

**PLAT OF SUBDIVISION  
 COLONIAL HERITAGE  
 PHASE ONE, SECTION THREE  
 LOTS 1-59  
 PREPARED FOR COLONIAL HERITAGE LLC**

DESIGNED: HWP  
 DRAWN: JFS  
 SCALE: 1"=60'  
 DATE: 4/3/03  
 PROJECT NO: 8881-09  
 DOCUMENT #: 040015485  
 DRAWING NO: 4 OF 5

City of Williamsburg & County of James City  
 Circuit Court: This PLAT was recorded on  
 6-17-2004  
 at 3:12 PM, P.B. 90, PGS. 57-61  
 Betsy B. Woolridge, Clerk

STONEHOUSE DISTRICT JAMES CITY COUNTY VIRGINIA

05.14.04-10:42 88819P04.dwg  
 JFS