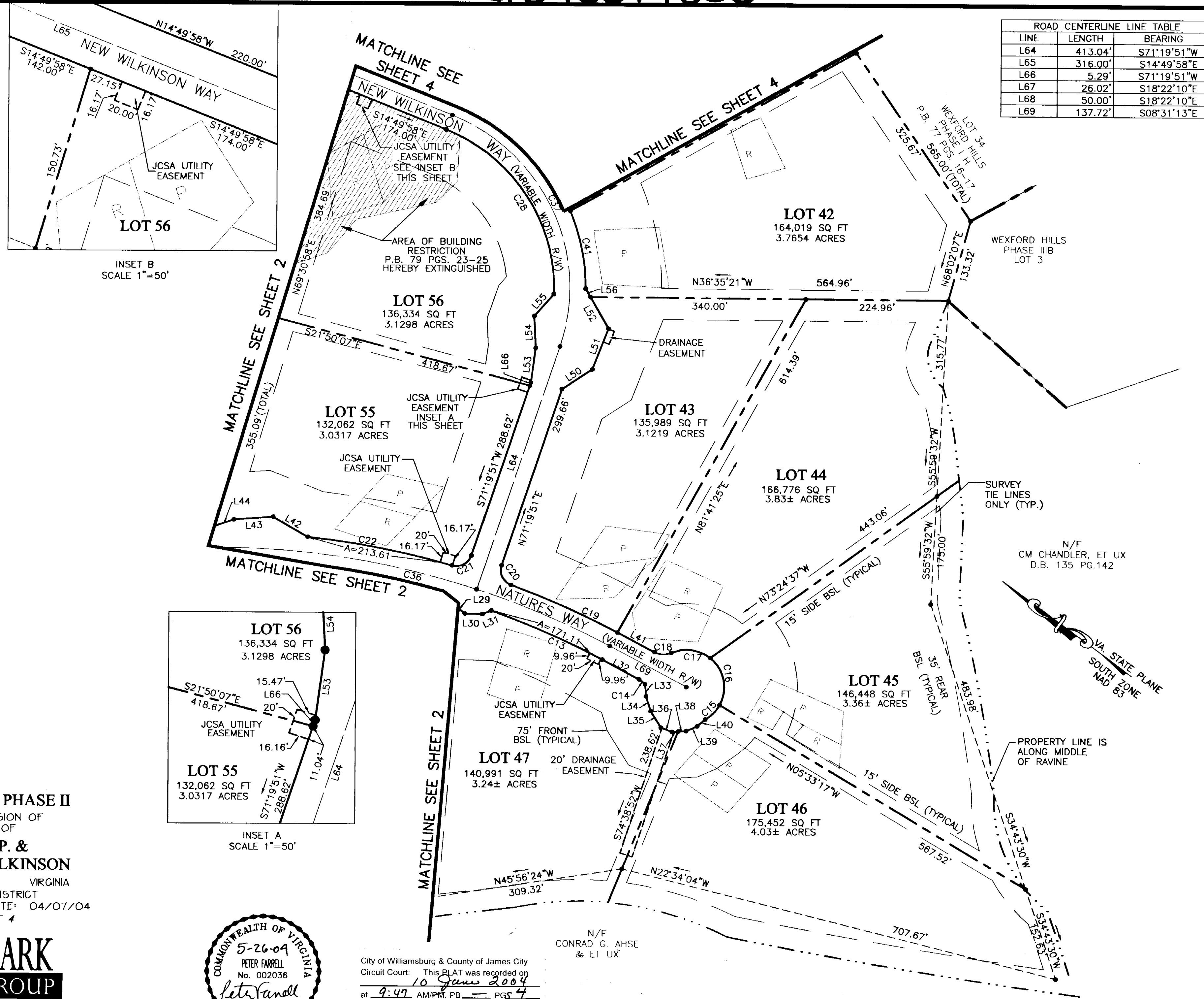


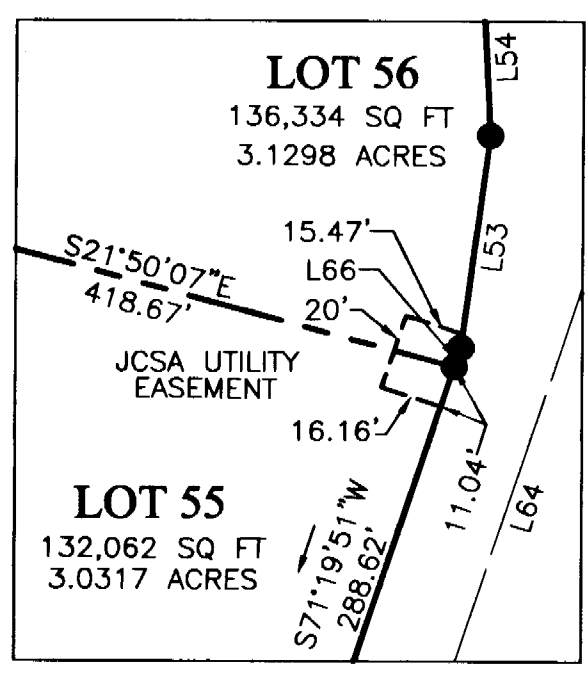
#040014835

LINE	LENGTH	BEARING
L1	141.62'	S63°33'49"E
L2	132.05'	S84°25'04"E
L3	141.13'	S09°26'17"E
L4	120.23'	S45°54'06"W
L6	74.41'	S42°39'33"W
L8	66.35'	S24°49'00"W
L10	79.33'	S11°20'26"W
L12	86.71'	S17°04'43"E
L13	69.06'	S26°47'03"E
L14	39.85'	S37°43'40"E
L15	45.65'	S08°21'51"E
L16	27.75'	S00°22'55"E
L17	7.06'	S08°27'43"E
L18	32.36'	S08°27'43"E
L19	20.00'	S57°25'43"E
L20	65.52'	S89°53'52"E
L21	68.00'	N20°19'11"W
L22	93.34'	N20°19'11"W
L23	125.00'	N45°56'24"W
L24	81.59'	S04°22'03"E
L25	51.66'	S32°56'46"E
L26	53.45'	S79°08'33"E
L27	130.16'	N44°03'36"E
L28	25.95'	S02°01'03"W
L29	22.62'	S02°37'30"W
L30	27.25'	S35°42'52"E
L31	14.99'	S60°17'01"E
L32	66.48'	S08°31'12"E
L33	19.10'	S48°09'49"W
L34	24.77'	S35°44'33"W
L35	31.15'	S21°30'12"W
L36	18.89'	S16°01'00"E
L37	9.76'	S40°11'04"E
L38	12.60'	S40°11'04"E
L39	18.73'	S60°58'15"E
L40	16.96'	S78°05'03"E
L41	66.48'	N08°31'12"W
L42	63.35'	N06°34'26"W
L43	62.14'	N41°05'16"W
L44	41.27'	N56°05'33"W
L45	20.94'	N56°05'33"W
L46	60.31'	N10°02'20"W
L47	20.00'	N57°25'43"W
L48	39.29'	N70°31'45"W
L49	56.60'	N37°43'40"W
L50	57.51'	S70°30'39"E
L51	70.88'	N73°53'42"E
L52	58.42'	N23°33'22"E
L53	56.68'	S60°36'22"W
L54	51.60'	S50°17'42"W
L55	47.14'	N86°16'15"W
L56	15.86'	N23°33'22"E
L57	132.39'	N75°52'21"E
L58	29.86'	N88°47'32"E
L59	75.66'	S48°29'04"W
L60	49.04'	S85°01'14"W
L61	53.07'	S78°27'37"W
L62	20.00'	S27°27'43"W
L63	76.44'	S28°17'35"W

LINE	LENGTH	BEARING
L64	413.04'	S71°19'51"W
L65	316.00'	S14°49'58"E
L66	5.29'	S71°19'51"W
L67	26.02'	S18°22'10"E
L68	50.00'	S18°22'10"E
L69	137.72'	S08°31'13"E



INSET B
SCALE 1"=50'

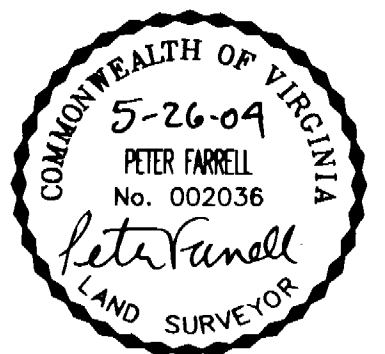


INSET A
SCALE 1"=50'

WEXFORD HILLS PHASE II
BEING A SUBDIVISION OF
PROPERTY OF
**HOWARD P. &
RICHARD F. WILKINSON**
JAMES CITY COUNTY VIRGINIA
STONEHOUSE DISTRICT
SCALE: 1"=100' DATE: 04/07/04
SHEET 3 OF 4

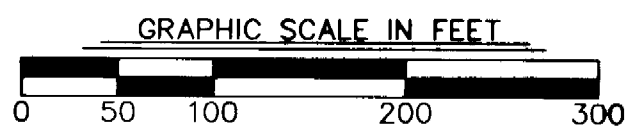


Engineers • Planners • Surveyors
Landscape Architects • Environmental Consultants
4029 IRONBOUND ROAD SUITE 100
WILLIAMSBURG, VIRGINIA
(757) 253-2975 FAX: (757) 229-0049



City of Williamsburg & County of James City
Circuit Court: This PLAT was recorded on
10 June 2004
at 9:47 AM/PM, P.B. PGS 4
DOCUMENT # 040014835
BETSY B. WOOLRIDGE, CLERK
Betsy B. Woolridge Clerk

N/F
CONRAD G. AHSE
& ET UX



DWG.#15031W