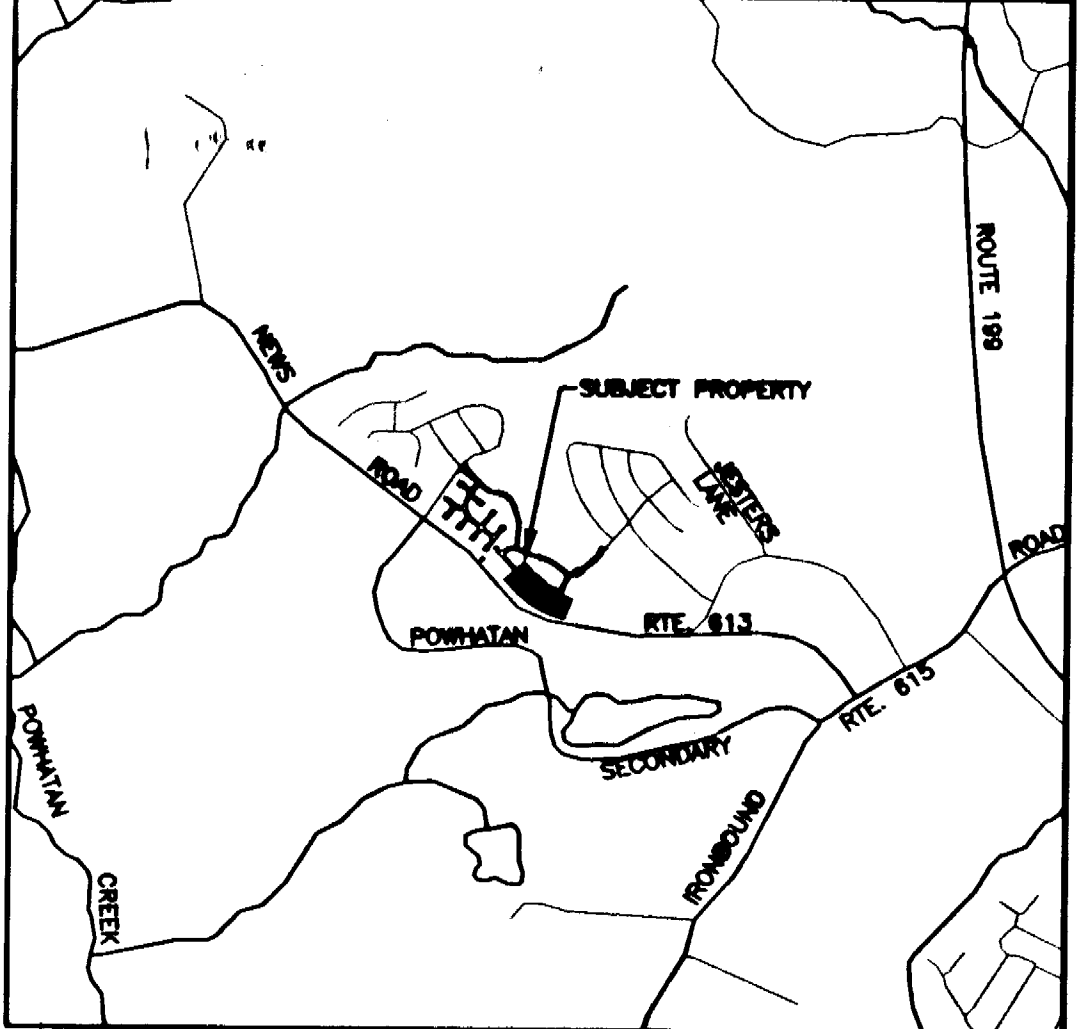
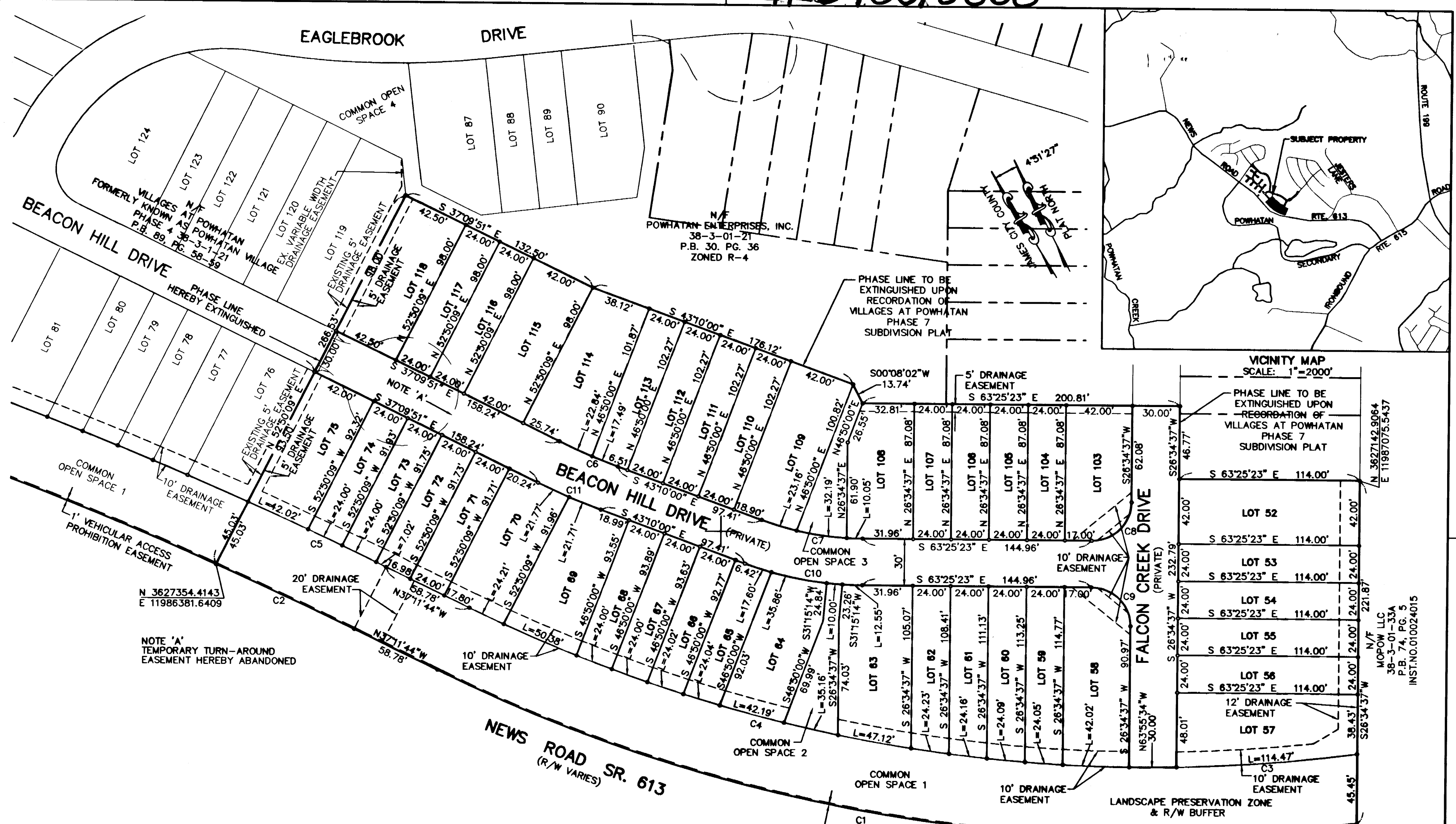
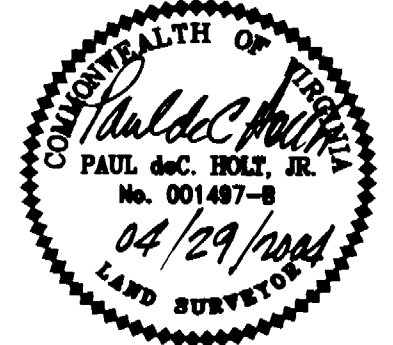
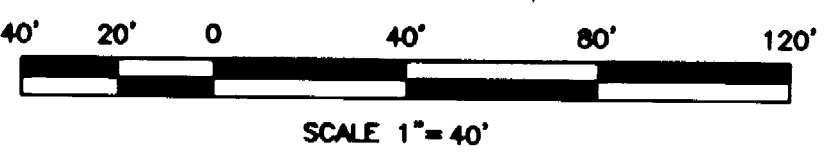


#040013868



CURVE TABLE						
CURVE	RADIUS	DELTA	LENGTH	TANGENT	CHORD BEARING	CHORD
C1	1006.74'	34°04'26"	598.71'	308.50'	S54°13'57"E	589.93'
C2	2700.19'	2°03'35"	97.06'	48.54'	N38°13'32"W	97.06'
C3	961.74'	6°49'10"	114.47'	57.30'	S68°13'46"E	114.40'
C4	961.74'	25°50'12"	433.68'	220.59'	S50°06'50"E	430.02'
C5	2745.19'	2°01'31"	97.04'	48.52'	N38°12'30"W	97.03'
C6	385.00'	6°00'08"	40.33'	20.18'	S40°09'56"E	40.31'
C7	185.00'	20°15'23"	65.40'	33.05'	S53°17'41"E	65.06'
C8	25.00'	90°00'00"	39.27'	25.00'	N71°34'37"E	35.36'
C9	25.00'	90°00'00"	39.27'	25.00'	N18°25'23"W	35.36'
C10	215.00'	20°15'23"	76.01'	38.41'	S53°17'41"E	75.62'
C11	415.00'	6°00'08"	43.48'	21.76'	S40°09'56"E	43.46'

City of Williamsburg & County of James City
Circuit Court: This PLAT was recorded on
1 June 2004
at 8:47 AM/PM: PB - PG 2
DOCUMENT # 040013868
BETSY B. WOOLRIDGE, CLERK
Betsy Woolridge Clerk



Patton Harris Rust & Associates, pc
Engineers. Surveyors. Planners. Landscape Architects.
190 Rosemont Road, Suite 101
Virginia Beach, VA 23452
T 757.497.7472
F 757.497.0250

PHRA

SUBDIVISION OF
The Villages at Powhatan
Phase 6
formerly known as
POWHATAN VILLAGE PHASE 6
Powhatan District
James City County, Virginia

FILE NAME: SubdivisionPlatPhase6.dwg
CHECKED: PDH/WHB
DRAWN: TF
DATE: APRIL 29, 2004
PROJECT NO: 11757-1-4
SCALE: 1" = 40'
SHEET: 1 OF 2

N 3627142.9064
E 11987075.5437
N/F
MOPOW LLC
38-3-01-33A
P.B. 74, PG. 5
INST. NO. 010024015