

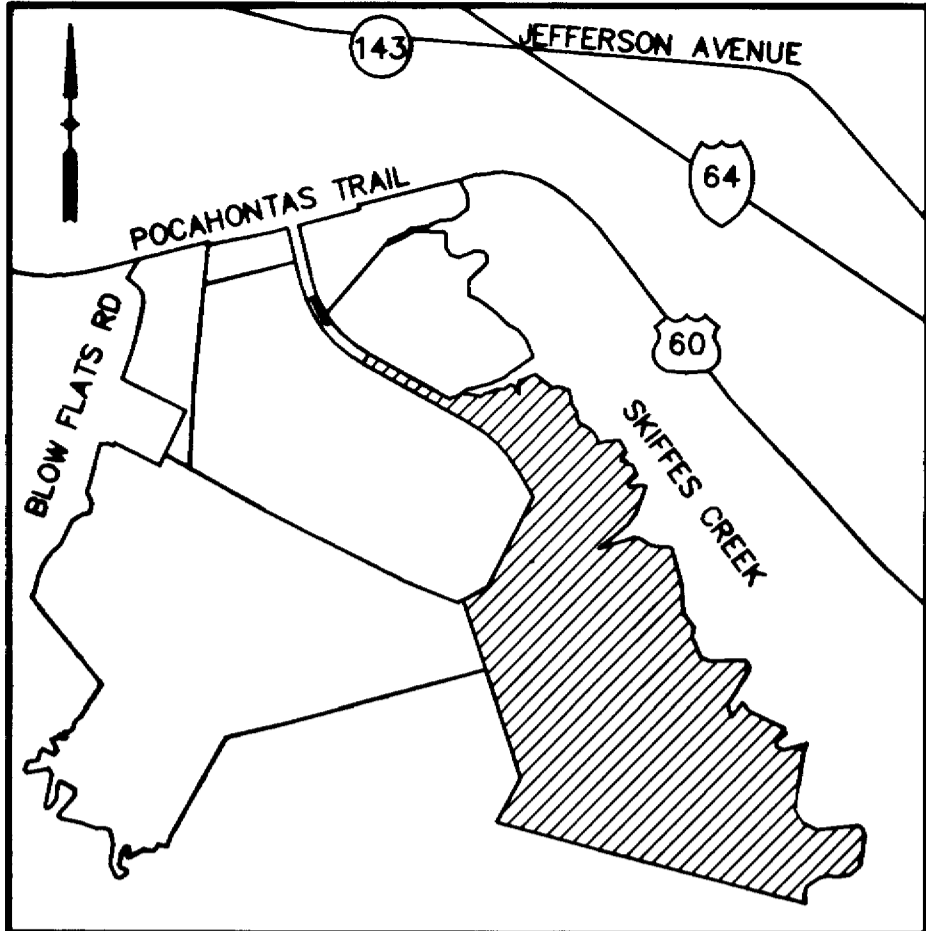
#040013143

© COPYRIGHT-REPRODUCTION OF THIS DOCUMENT IN WHOLE OR IN PART IS STRICTLY PROHIBITED WITHOUT PRIOR WRITTEN AUTHORIZATION FROM PATTON HARRIS RUST & ASSOCIATES, P.C.

STATE OF VIRGINIA, COUNTY OF JAMES CITY IN THE CLERK'S OFFICE OF THE CIRCUIT COURT THE PLAT SHOWN HEREON WAS PRESENTED AND ADMITTED TO RECORD THIS 20th DAY OF May 2004 AS THE LAW DIRECTS. @ 12:43 PM

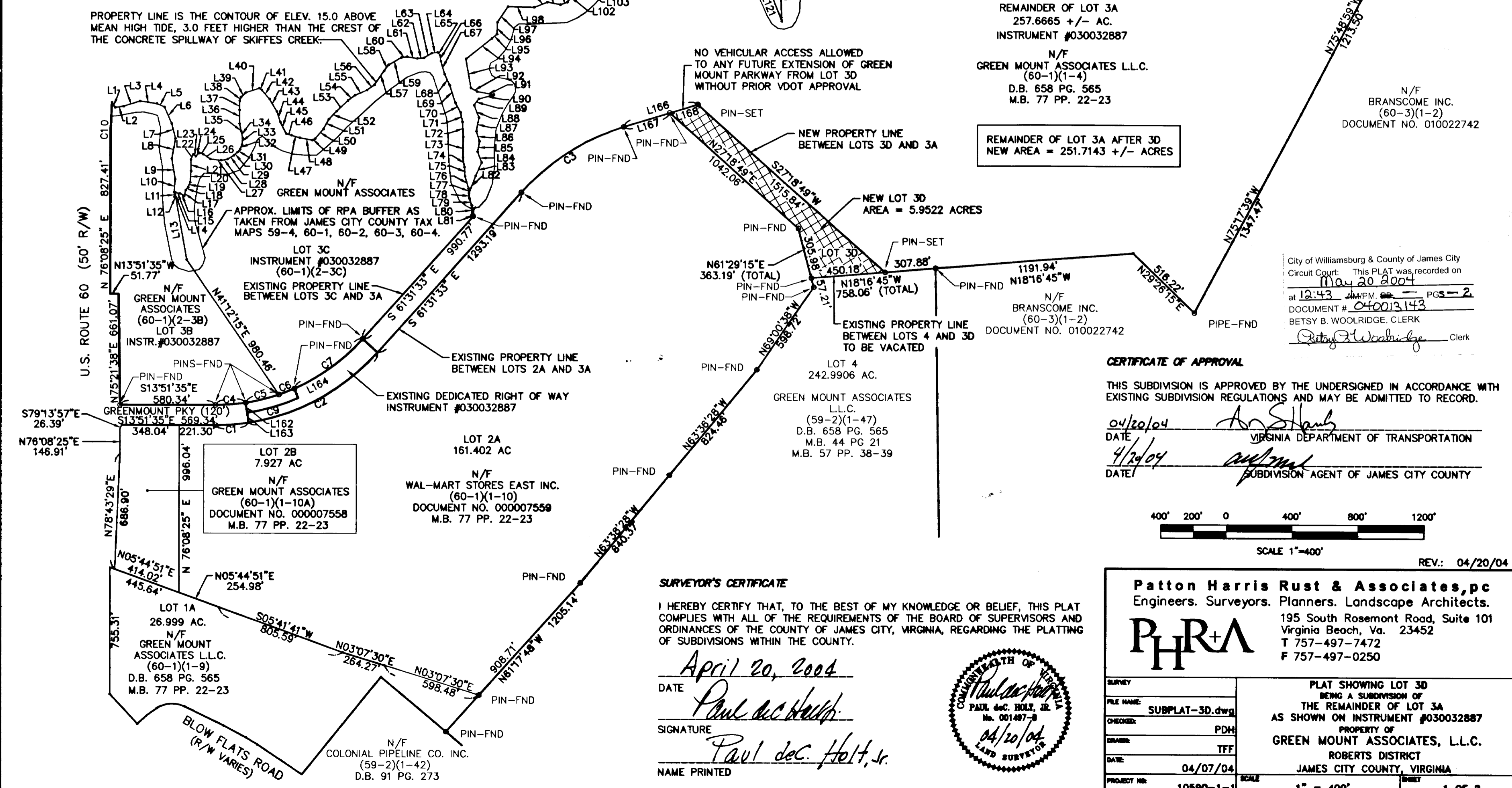
CLERK: *Betsy B. Woolridge* PLAT BOOK: PAGE: End # 040013143

NOTE: CHANGE IN PROPERTY LINE FROM CONTOUR OF ELEV. 15.0 ABOVE MEAN HIGH TIDE, 3.0 FEET HIGHER THAN THE CREST OF THE CONCRETE SPILLWAY OF SKIFFES CREEK TO MEAN LOW WATER LINE OF SKIFFES CREEK OCCURS AT POINT "A".



SKIFFES CREEK RESERVOIR

PROPERTY LINE IS THE CONTOUR OF ELEV. 15.0 ABOVE MEAN HIGH TIDE, 3.0 FEET HIGHER THAN THE CREST OF THE CONCRETE SPILLWAY OF SKIFFES CREEK.



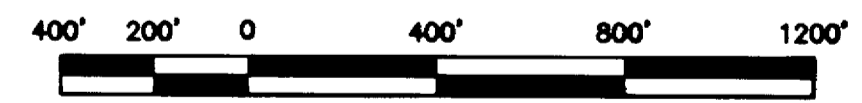
REMAINDER OF LOT 3A 257.6665 +/- AC. INSTRUMENT #030032887 N/F GREEN MOUNT ASSOCIATES L.L.C. (60-1)(1-4) D.B. 658 PG. 565 M.B. 77 PP. 22-23

REMAINDER OF LOT 3A AFTER 3D NEW AREA = 251.7143 +/- ACRES

N/F BRANSCOME INC. (60-3)(1-2) DOCUMENT NO. 010022742

City of Williamsburg & County of James City Circuit Court: This PLAT was recorded on May 20 2004 at 12:43 PM PGS - 2 DOCUMENT # 040013143 BETSY B. WOOLRIDGE, CLERK *Betsy B. Woolridge* Clerk

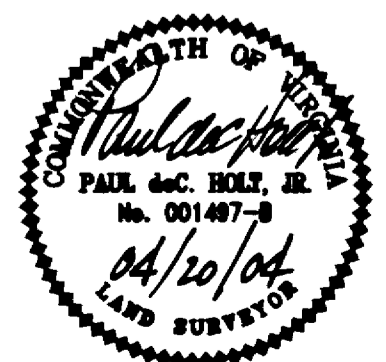
CERTIFICATE OF APPROVAL THIS SUBDIVISION IS APPROVED BY THE UNDERSIGNED IN ACCORDANCE WITH EXISTING SUBDIVISION REGULATIONS AND MAY BE ADMITTED TO RECORD. DATE 04/20/04 DATE 4/29/04



SURVEYOR'S CERTIFICATE

I HEREBY CERTIFY THAT, TO THE BEST OF MY KNOWLEDGE OR BELIEF, THIS PLAT COMPLIES WITH ALL OF THE REQUIREMENTS OF THE BOARD OF SUPERVISORS AND ORDINANCES OF THE COUNTY OF JAMES CITY, VIRGINIA, REGARDING THE PLATTING OF SUBDIVISIONS WITHIN THE COUNTY.

DATE April 20, 2004 SIGNATURE *Paul deC. Holt, Jr.* NAME PRINTED Paul deC. Holt, Jr.



Patton Harris Rust & Associates, p.c. Engineers. Surveyors. Planners. Landscape Architects. PHRA 195 South Rosemont Road, Suite 101 Virginia Beach, Va. 23452 T 757-497-7472 F 757-497-0250

SURVEY	PLAT SHOWING LOT 3D BEING A SUBDIVISION OF THE REMAINDER OF LOT 3A AS SHOWN ON INSTRUMENT #030032887 PROPERTY OF GREEN MOUNT ASSOCIATES, L.L.C. ROBERTS DISTRICT JAMES CITY COUNTY, VIRGINIA
FILE NAME: SUBPLAT-3D.dwg	SCALE 1" = 400'
CHECKED: PDH	SHEET 1 OF 2
DRAWN: TFF	
DATE: 04/07/04	
PROJECT NO: 10590-1-1	

REV.: 04/20/04