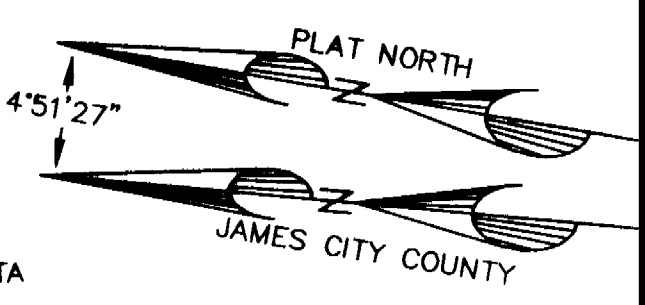
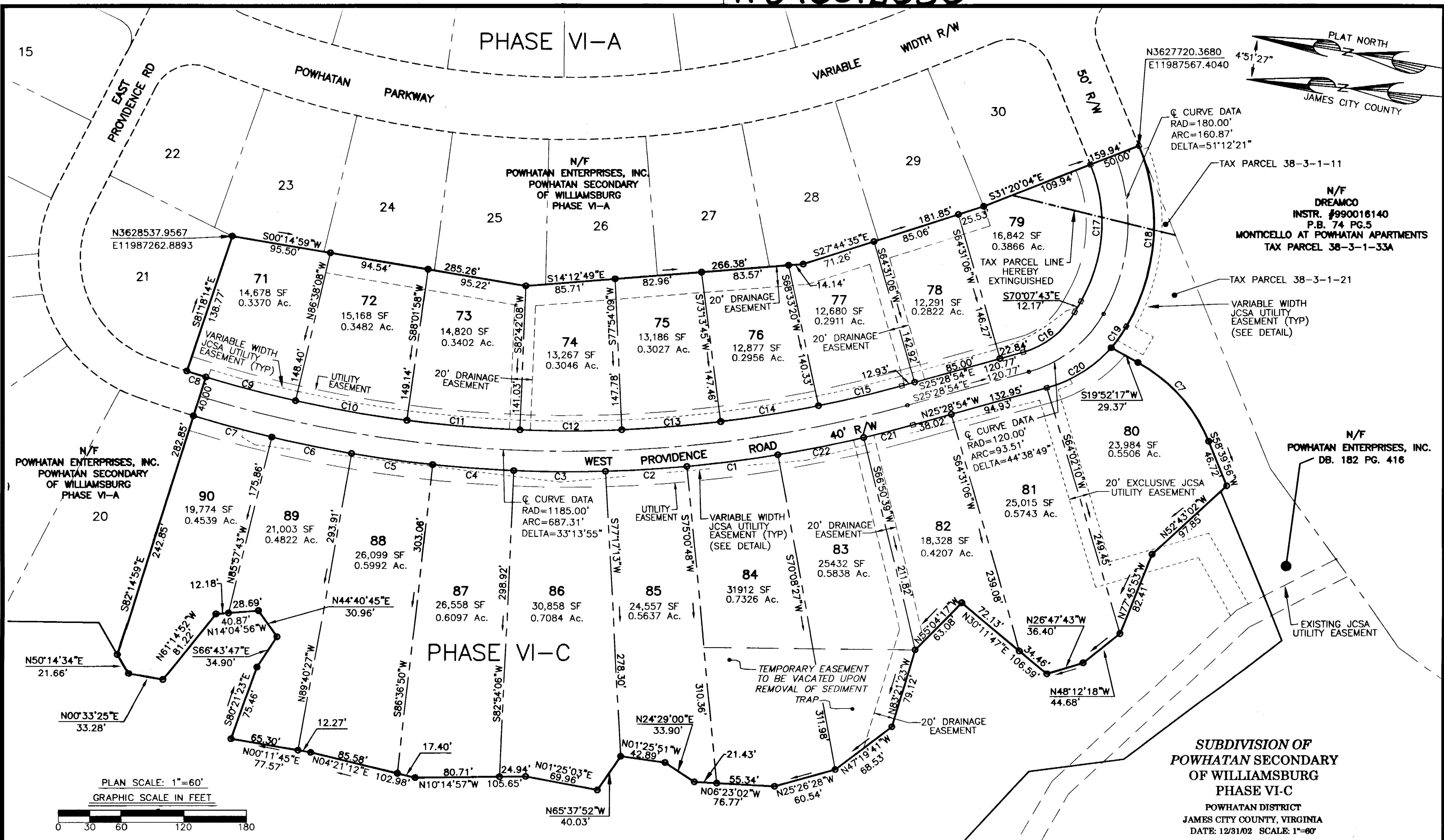


#040012353



Q CURVE DATA  
 RAD=180.00'  
 ARC=160.87'  
 DELTA=51°12'21"

TAX PARCEL 38-3-1-11

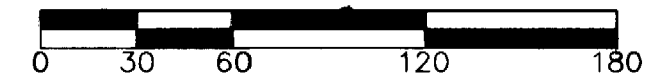
N/F DREAMCO  
 INSTR. #990016140  
 P.B. 74 PG.5  
 MONTICELLO AT POWHATAN APARTMENTS  
 TAX PARCEL 38-3-1-33A

TAX PARCEL 38-3-1-21

VARIABLE WIDTH JCSA UTILITY EASEMENT (TYP) (SEE DETAIL)

N/F POWHATAN ENTERPRISES, INC.  
 DB. 182 PG. 416

PLAN SCALE: 1"=60'  
 GRAPHIC SCALE IN FEET



SUBDIVISION OF  
 POWHATAN SECONDARY  
 OF WILLIAMSBURG  
 PHASE VI-C  
 POWHATAN DISTRICT  
 JAMES CITY COUNTY, VIRGINIA  
 DATE: 12/31/02 SCALE: 1"=60'  
 SHEET 2 OF 2

CURVE TABLE					
CURVE	LENGTH	RADIUS	TANGENT	CHORD	DELTA
C1	87.83'	1205.00'	43.94'	87.81'	4°10'35"
C2	78.07'	1205.00'	39.05'	78.06'	3°42'44"
C3	87.83'	1205.00'	43.94'	87.81'	4°10'35"
C4	78.07'	1205.00'	39.05'	78.06'	3°42'44"
C5	78.07'	1205.00'	39.05'	78.06'	3°42'44"
C6	78.07'	1205.00'	39.05'	78.06'	3°42'44"
C7	78.07'	1205.00'	39.05'	78.06'	3°42'44"
C9	89.18'	1165.00'	44.61'	89.15'	4°23'09"
C10	108.41'	1165.00'	54.24'	108.37'	5°19'54"
C11	108.41'	1165.00'	54.24'	108.37'	5°19'54"

CURVE TABLE					
CURVE	LENGTH	RADIUS	TANGENT	CHORD	DELTA
C12	97.57'	1165.00'	48.81'	97.54'	5°09'41"
C13	95.03'	1165.00'	47.54'	95.00'	4°40'25"
C14	95.03'	1165.00'	47.54'	95.00'	4°40'25"
C15	82.09'	1165.00'	41.06'	82.08'	4°02'15"
C16	64.43'	82.68'	33.95'	62.81'	44°38'49"
C17	138.52'	155.00'	74.27'	133.96'	51°12'21"
C18	183.21'	205.00'	98.23'	177.17'	51°12'21"
C19	25.16'	127.66'	12.62'	25.12'	11°17'30"
C20	74.32'	127.66'	38.25'	73.28'	33°21'19"
C21	48.92'	1205.00'	24.46'	48.91'	2°19'34"
C22	83.97'	1205.00'	42.00'	83.95'	3°59'34"

City of Williamsburg & County of James City  
 Circuit Court: This PLAT was recorded on  
 5-07-2004  
 at 2:04 P.M. PG. 2  
 DOCUMENT # 040012353  
 BETSY B. WOOLRIDGE, CLERK  
 Betsy B. Woolridge Clerk

**LANDMARK  
 DESIGN GROUP**  
 Engineers • Planners • Surveyors  
 Landscape Architects • Environmental Consultants

4029 Ironbound Road, Suite 100  
 Williamsburg, VA 23188  
 Tel. (757) 253-2975 Fax (757) 229-0049  
 Email: lmdg@landmarkdg.com