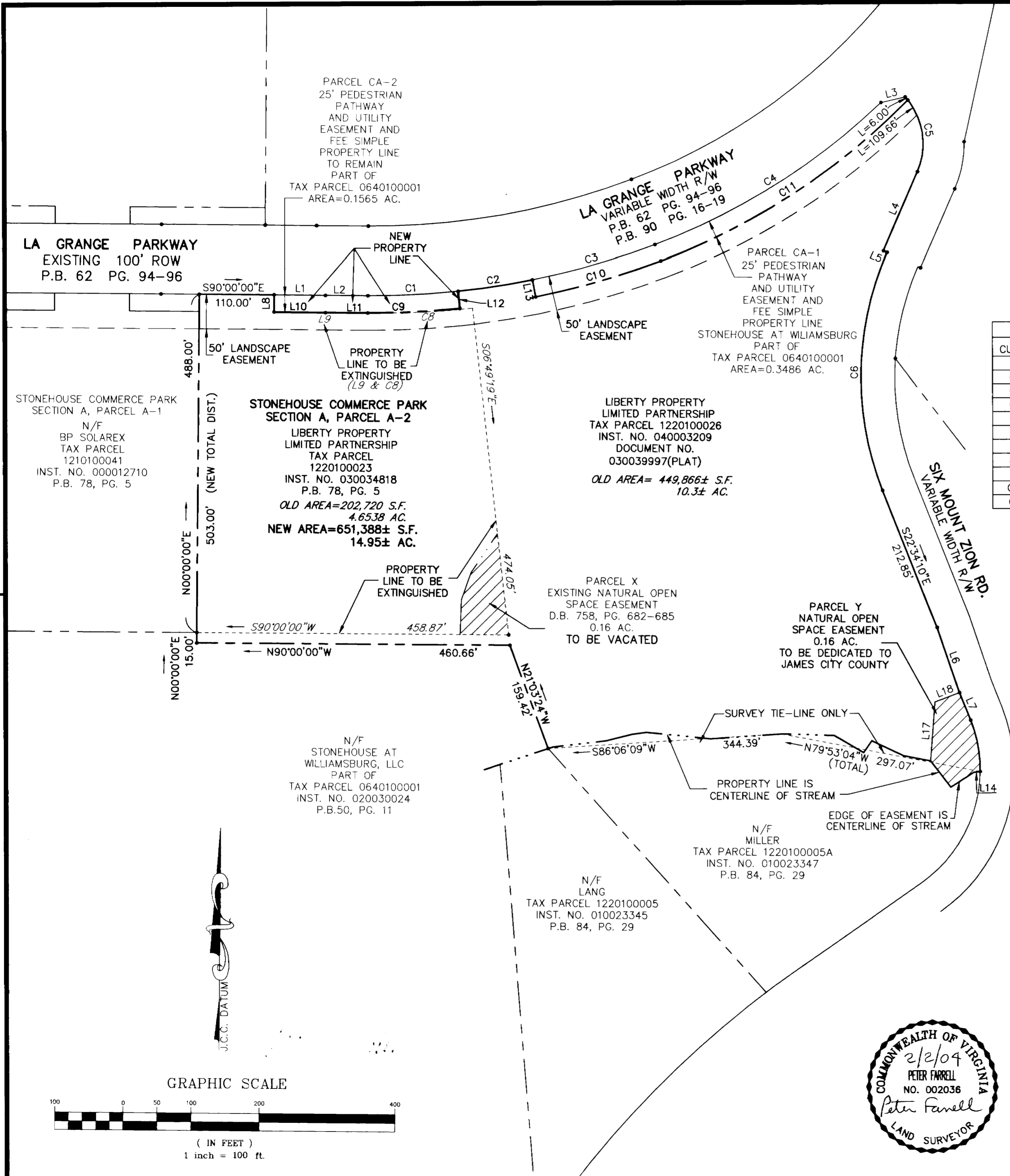


#040007424

LINE	LENGTH	BEARING
L1	76.02'	N89°43'25"W
L2	62.23'	N90°00'00"E
L3	36.79'	S76°43'27"W
L4	124.52'	S23°28'13"W
L5	5.93'	S66°31'47"E
L6	100.13'	S19°42'25"E
L7	42.85'	S22°34'10"E
L8	25.00'	S00°00'00"W
L9	163.44'	N90°00'00"E
L10	75.96'	N89°43'25"W
L11	62.29'	N90°00'00"E
L12	25.00'	S06°21'17"E
L13	25.00'	S11°36'21"E
L14	9.29'	S83°09'34"W
L15	39.86'	S56°47'53"W
L16	48.52'	N38°42'52"W
L17	85.13'	N04°00'16"E
L18	38.50'	N69°04'14"E

CURVE	RADIUS	LENGTH	TANGENT	CHORD	CHORD BEARING	DELTA
C1	1200.20'	133.12'	66.63'	133.05'	N86°49'21"E	6°21'17"
C2	1200.20'	110.00'	55.04'	109.96'	N81°01'11"E	5°15'04"
C3	1200.20'	187.80'	94.09'	187.61'	N73°54'41"E	8°57'56"
C4	982.00'	392.85'	199.09'	390.24'	N57°58'04"E	22°55'17"
C5	100.00'	115.66'	65.27'	109.32'	N09°59'30"W	22°15'58"
C6	435.60'	353.10'	186.90'	343.52'	S00°39'10"W	46°26'41"
C7	190.36'	75.95'	38.49'	75.45'	N11°08'22"W	22°51'38"
C8	1087.00'	129.42'	64.79'	129.35'	N86°35'20"E	6°49'19"
C9	1225.20'	135.89'	68.02'	135.82'	N86°49'21"E	6°21'17"
C10	1225.20'	191.72'	96.05'	191.52'	N73°54'41"E	8°57'56"
C11	1007.00'	434.44'	220.65'	431.08'	N57°04'10"E	24°43'06"



City of Williamsburg & County of James City  
 Circuit Court: This PLAT was recorded on  
 at 1:19 AM/PM, PB PG  
 DOCUMENT # 040007424  
 BETSY B. WOOLRIDGE, CLERK  
*Betsy B. Woolridge* Clerk

**BOUNDARY LINE ADJUSTMENT  
 OF THE PROPERTY OF  
 LIBERTY PROPERTY LIMITED PARTNERSHIP  
 STONEHOUSE COMMERCE PARK**

STONEHOUSE DISTRICT, JAMES CITY COUNTY, VIRGINIA  
 DATE: OCT. 24, 2003 SCALE 1"=100'  
 REVISED FEB. 2, 2004  
 SHEET 2 OF 2

**LANDMARK  
 DESIGN GROUP**  
 Engineers • Planners • Surveyors  
 Landscape Architects • Environmental Consultants

4029 Ironbound Road  
 Suite 100  
 Williamsburg, VA 23188  
 Tel. (757) 253-2975  
 Fax (757) 229-0049  
 Email: lmdg@landmarkdg.com

5544 Greenwich Road  
 Suite 200  
 Virginia Beach, VA 23462  
 Tel. (757) 473-2000  
 Fax (757) 497-7933  
 Email: lmdg@landmarkdg.com

