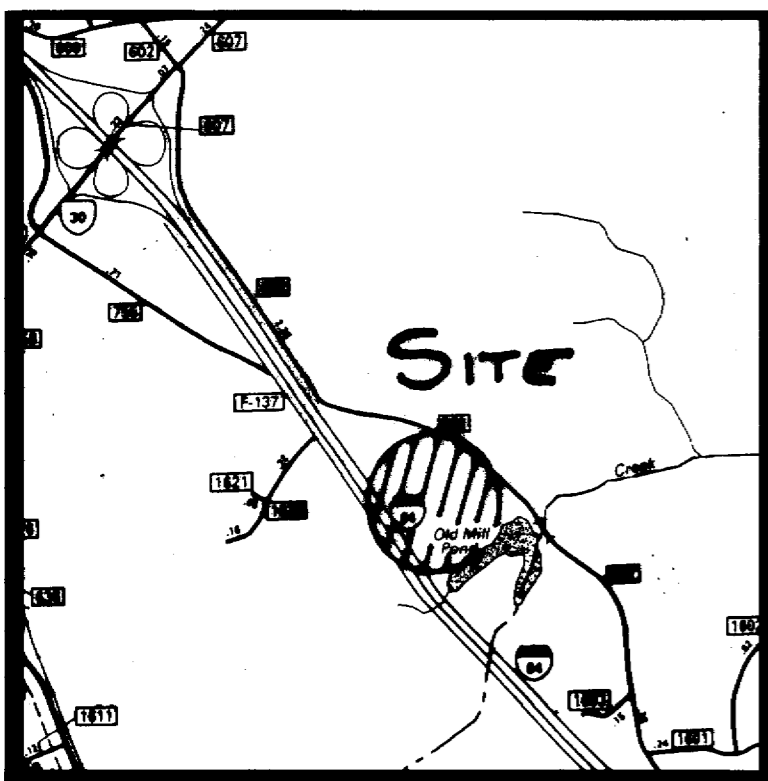


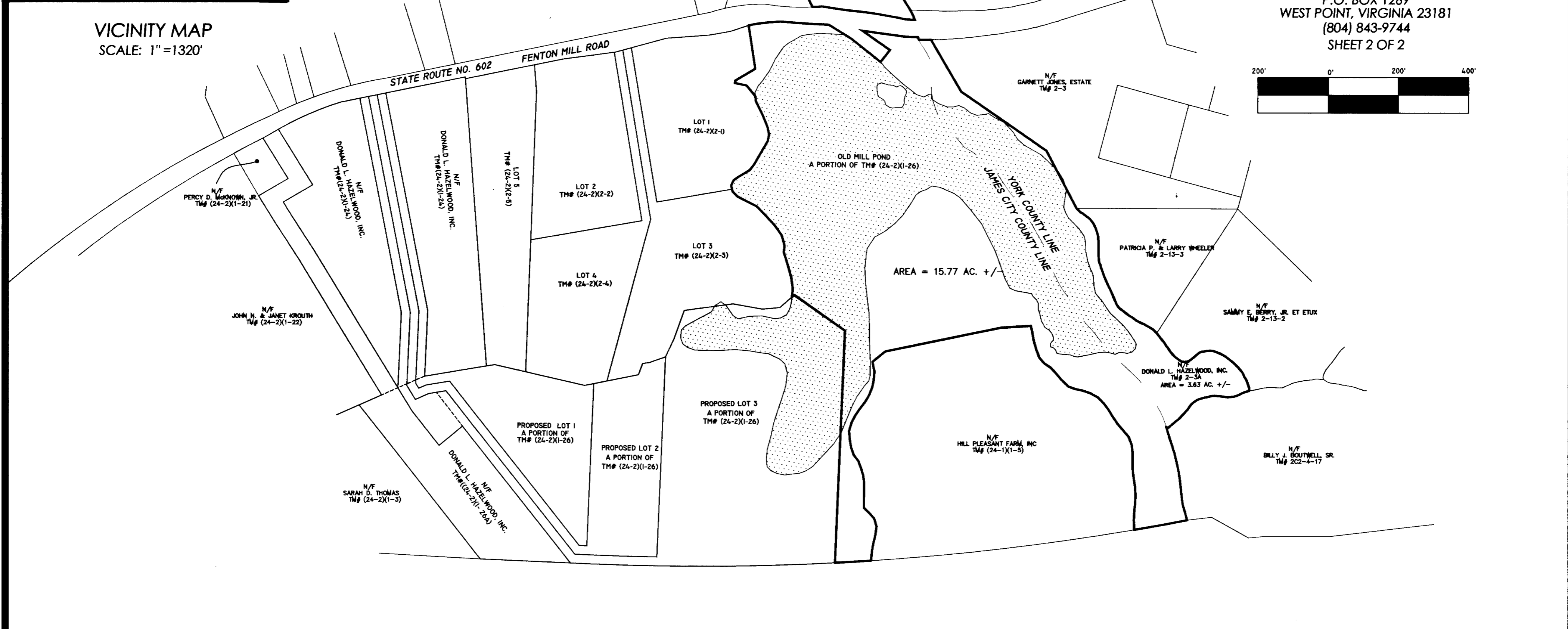
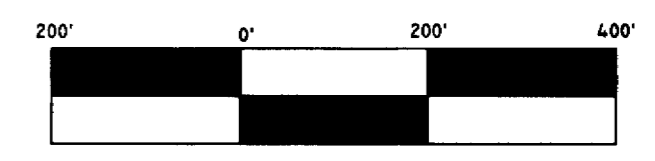
040005534



VICINITY MAP
SCALE: 1"=1320'



EXHIBIT
 BEING A PORTION OF PROPERTY IDENTIFIED AS
JAMES CITY COUNTY TM# (24-2)(1-26)
 AND
YORK COUNTY TM# 2-3A
 KNOWN AS
"OLD MILL POND"
 CONTAINING
23.45 ACRES +/-
 LOCATED: STONEHOUSE MAGISTERIAL DISTRICT,
 JAMES CITY COUNTY & BRUTON DISTRICT, YORK COUNTY, VIRGINIA
 DATE: JANUARY 15, 2003 SCALE: 1" = 200'
 REVISED DATE: JULY 15, 2003
MITCHELL-WILSON ASSOCIATES, P.C.
 CIVIL ENGINEERS & LAND SURVEYORS
 720 MAIN STREET, SUITE 112
 P.O. BOX 1269
 WEST POINT, VIRGINIA 23181
 (804) 843-9744
 SHEET 2 OF 2



INTERSTATE 64

NOTES:
 (1.) THIS DRAWING DOES NOT REPRESENT A BOUNDARY SURVEY. INFORMATION SHOWN HEREON IS A COMPOSITE OF RECORD PLATS, PLAT OF SUBDIVISION AND GEOGRAPHIC INFORMATION MAPPING PURCHASED FROM JAMES CITY COUNTY AND YORK COUNTY.
 (2.) AREAS SHOWN HEREON ARE CALCULATED USING COMMISSION OF REVENUE DATA AND G.I.S. MAPPING DATA.

HUGH L. MARTIN, ESTATE
 TM# (24-1)(1-2)
 DONALD L. & NANCY HEATH
 TM# (24-2)(1-1)
 JOHN & MARY H. ROBERTS
 TM# (24-2)(1-2)
 HILL PLEASANT FARM, INC.
 TM# (24-1)(1-5)

City of Williamsburg & County of James City
 Circuit Court: This PLAT was recorded on
18 February 2004
 at 11:59 AM/PM: PG —
 DOCUMENT # 040005534
 BETSY B. WOOLRIDGE, CLERK
Betsy B. Woolridge Clerk

AREA TABLE:

YORK COUNTY: TM# 2-3A = 3.63 ACRES +/-
 JAMES CITY COUNTY: NORTHERN PORTION TM# (24-2)(1-26) = 2.40 ACRES +/-
 OLD MILL POND (MIDDLE) PORTION TM# (24-2)(1-26) = 15.77 ACRES +/-
 SOUTHERN PORTION (24-2)(1-26) = 1.65 ACRES +/-

