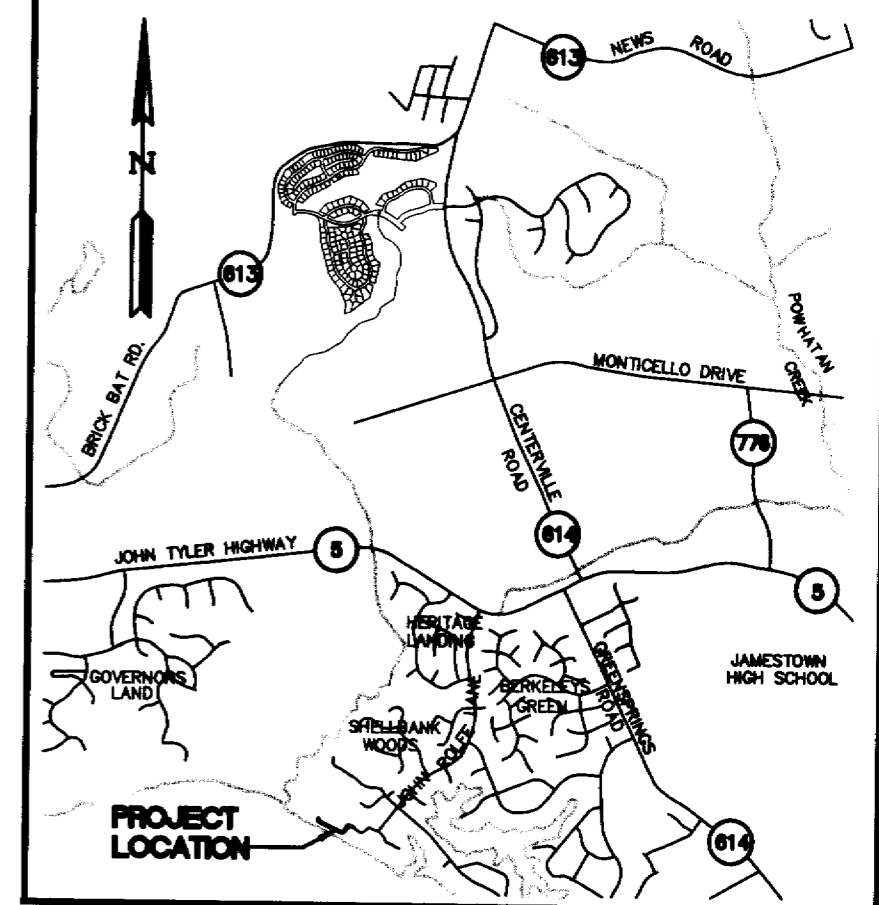


#040004728

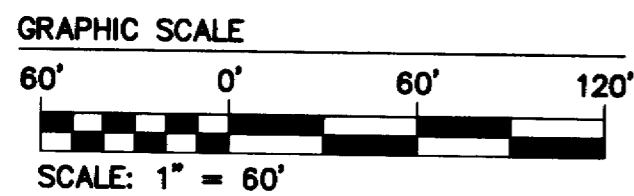
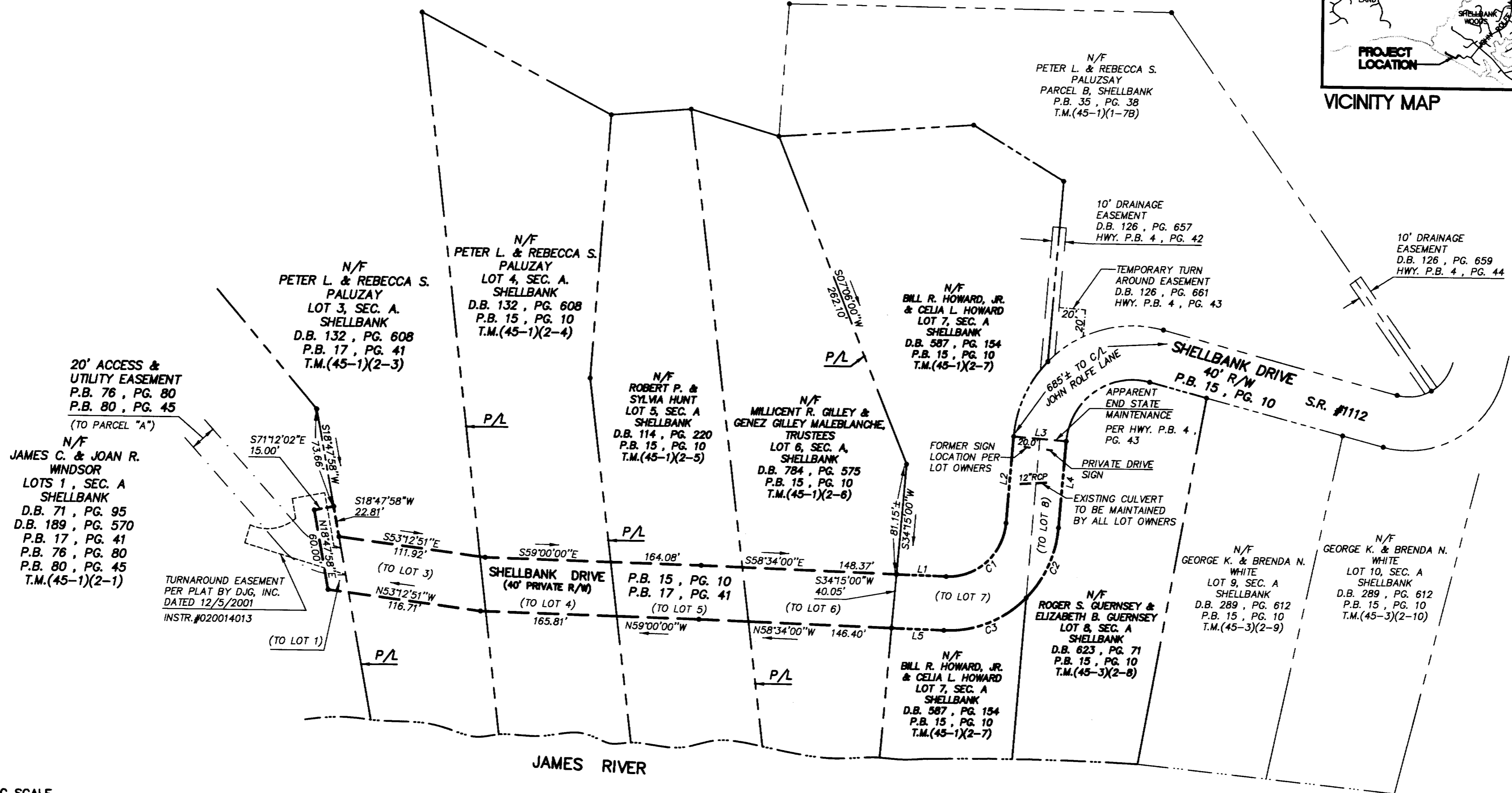
RECORD MERIDIAN
PLAT BOOK 15, PAGE 10
PLAT BOOK 17, PAGE 41

CURVE DATA						
NUMBER	DELTA	RADIUS	LENGTH	TANGENT	CHORD	CH. BEARING
C1	87°26'00"	43.67	66.64	41.76	60.36	N77°43'00"E
C2	40°11'59"	83.67	58.70	30.62	57.51	S54°05'59"W
C3	47°14'01"	83.67	68.98	36.58	67.04	N82°11'01"W

LINE TABLE		
NUMBER	BEARING	DISTANCE
L1	S58°34'00"E	37.63'
L2	N34°00'00"E	64.60'
L3	S56°00'00"E	40.00'
L4	S34°00'00"W	64.60'
L5	N58°34'00"W	39.60'

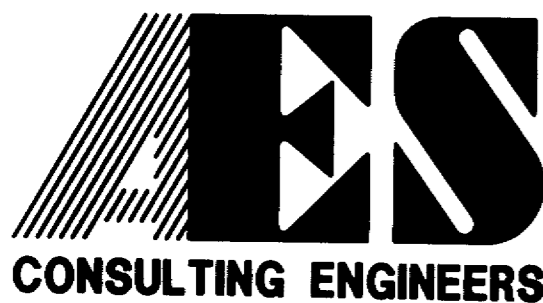


VICINITY MAP



NOTE:
THIS PLAT IS BASED ON RECORDED AND OTHER AVAILABLE
INFORMATION AND DOES NOT REPRESENT A FIELD SURVEY
OF THE BOUNDARIES.

09-17-02-16:16 9218P01.DWG JKR



5248 Olde Towne Road, Suite 1
Williamsburg, Virginia 23188
(757) 253-0040
Fax (757) 220-8994

COMPOSITE MAP SHOWING
A PRIVATE 40' RIGHT-OF-WAY
"SHELLBANK DRIVE"
JAMESTOWN DISTRICT JAMES CITY COUNTY VIRGINIA



City of Williamsburg & County of James City Circuit Court: This PLAT was recorded on <u>11 February 2004</u>			
at <u>2:58</u> AM/PM, PG. <u>10</u>	DOCUMENT # <u>040004728</u>		
BETSY B. WOOLRIDGE, CLERK			
<i>Betsy B. Woolridge</i> Clerk			
1	11/8/02	ADDED PRIVATE DRIVE SIGN	JKR
No.	DATE	REVISION / COMMENT / NOTE	BY

Designed AES	Drawn JKR
Scale 1"=60'	Date 9/17/2002
Project No. 9218	
Drawing No. 10F1	