

# #040004728

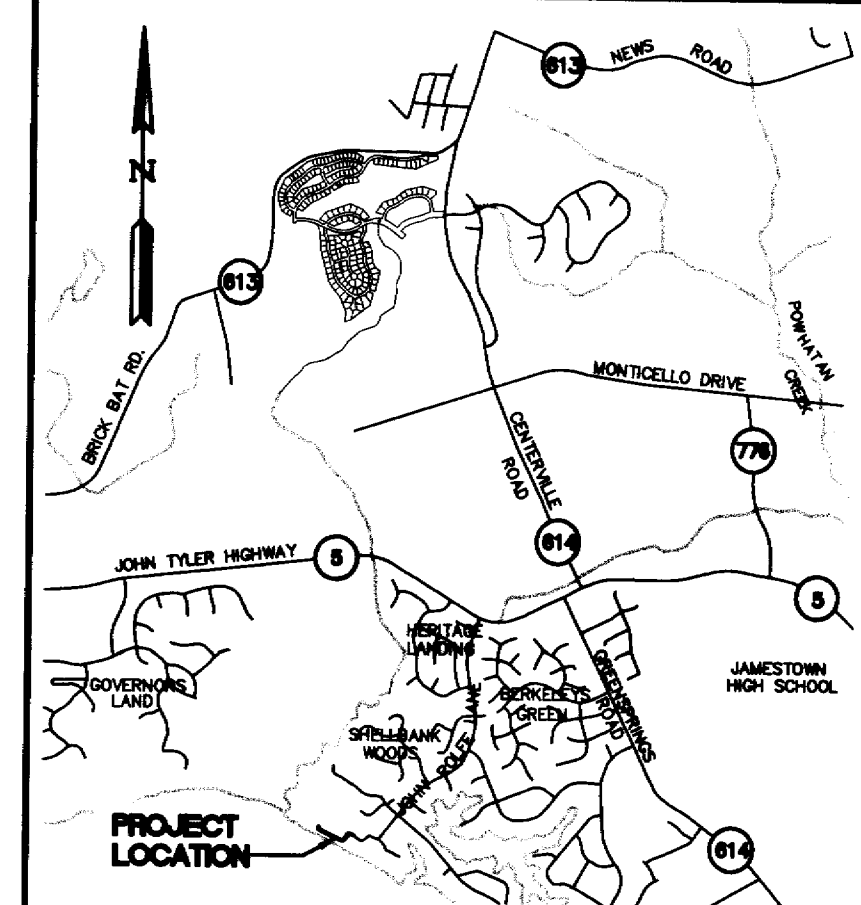
RECORD MERIDIAN  
PLAT BOOK 15, PAGE 10  
PLAT BOOK 17, PAGE 41

**CURVE DATA**

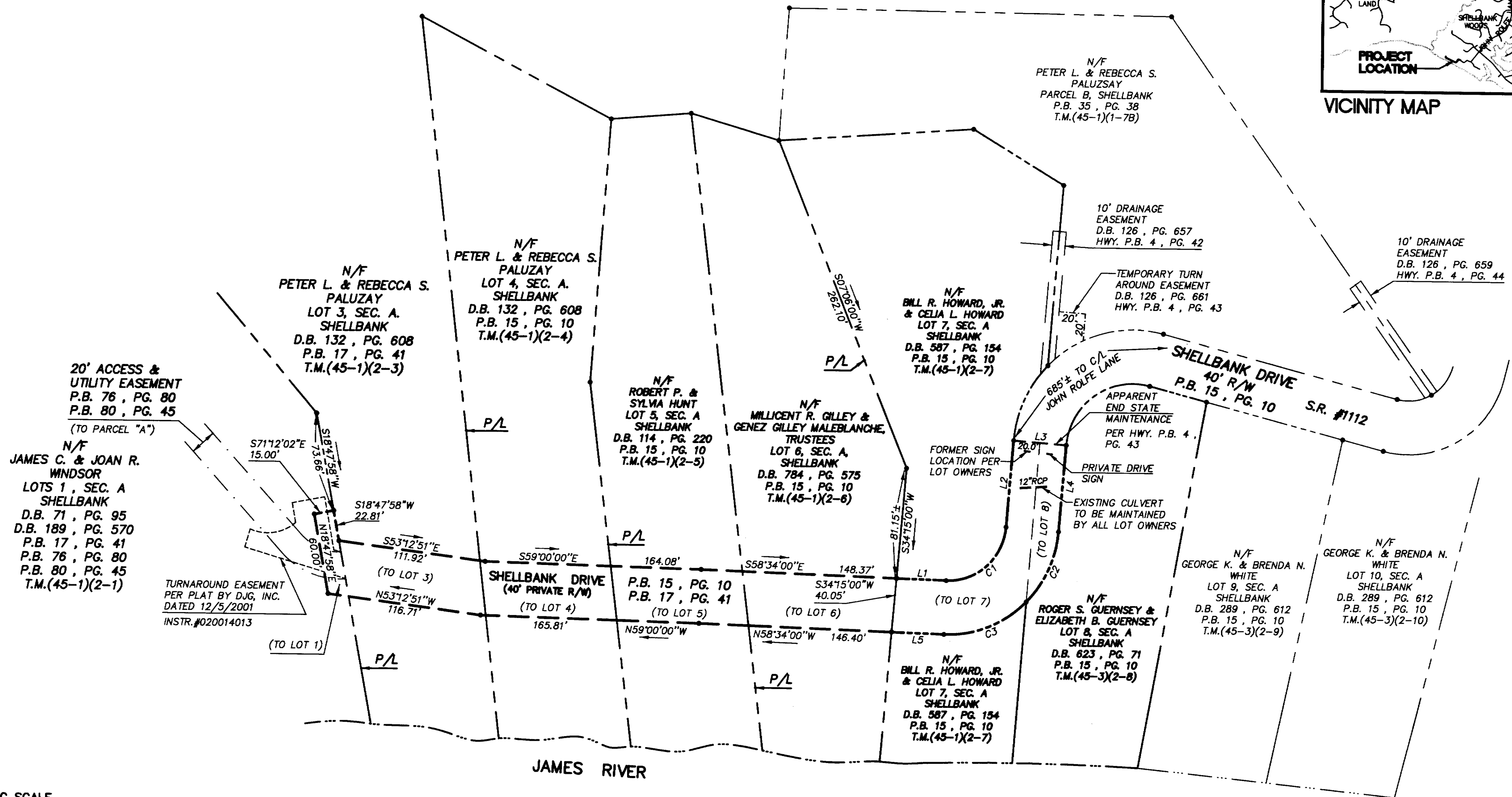
NUMBER	DELTA	RADIUS	LENGTH	TANGENT	CHORD	CH. BEARING
C1	87°26'00"	43.67	66.64	41.76	60.36	N77°43'00"E
C2	40°11'59"	83.67	58.70	30.62	57.51	S54°05'59"W
C3	47°14'01"	83.67	68.98	36.58	67.04	N82°11'01"W

**LINE TABLE**

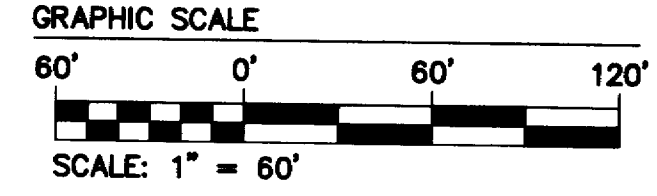
NUMBER	BEARING	DISTANCE
L1	S58°34'00"E	37.63'
L2	N34°00'00"E	64.60'
L3	S56°00'00"E	40.00'
L4	S34°00'00"W	64.60'
L5	N58°34'00"W	39.60'



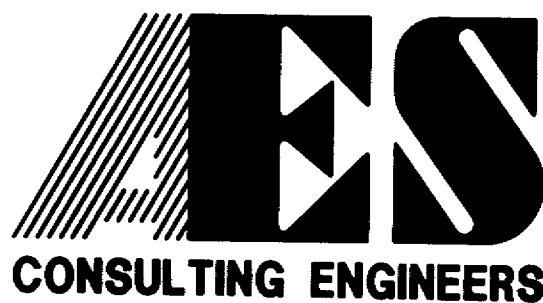
VICINITY MAP



NOTE:  
THIS PLAT IS BASED ON RECORDED AND OTHER AVAILABLE INFORMATION AND DOES NOT REPRESENT A FIELD SURVEY OF THE BOUNDARIES.



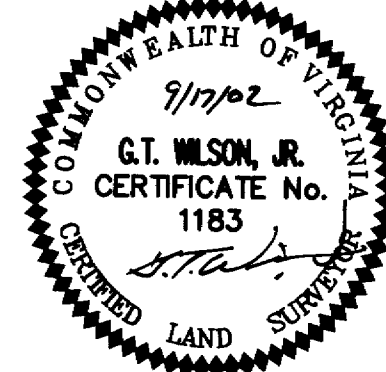
09-17-02-16:16 9218P01.DWG JKR



5248 Olde Towne Road, Suite 1  
Williamsburg, Virginia 23188  
(757) 253-0040  
Fax (757) 220-8994

COMPOSITE MAP SHOWING  
A PRIVATE 40' RIGHT-OF-WAY  
"SHELLBANK DRIVE"

JAMESTOWN DISTRICT    JAMES CITY COUNTY    VIRGINIA



City of Williamsburg & County of James City  
Circuit Court: This PLAT was recorded on 11 February 2004  
at 2:58 AM/PM, PG. 10  
DOCUMENT # 040004728  
BETSY B. WOOLRIDGE, CLERK  
*Betsy B. Woolridge* Clerk

No.	DATE	REVISION / COMMENT / NOTE	BY
1	11/8/02	ADDED PRIVATE DRIVE SIGN	JKR

Designed AES	Drawn JKR
Scale 1"=60'	Date 9/17/2002
Project No. 9218	
Drawing No. 10F1	