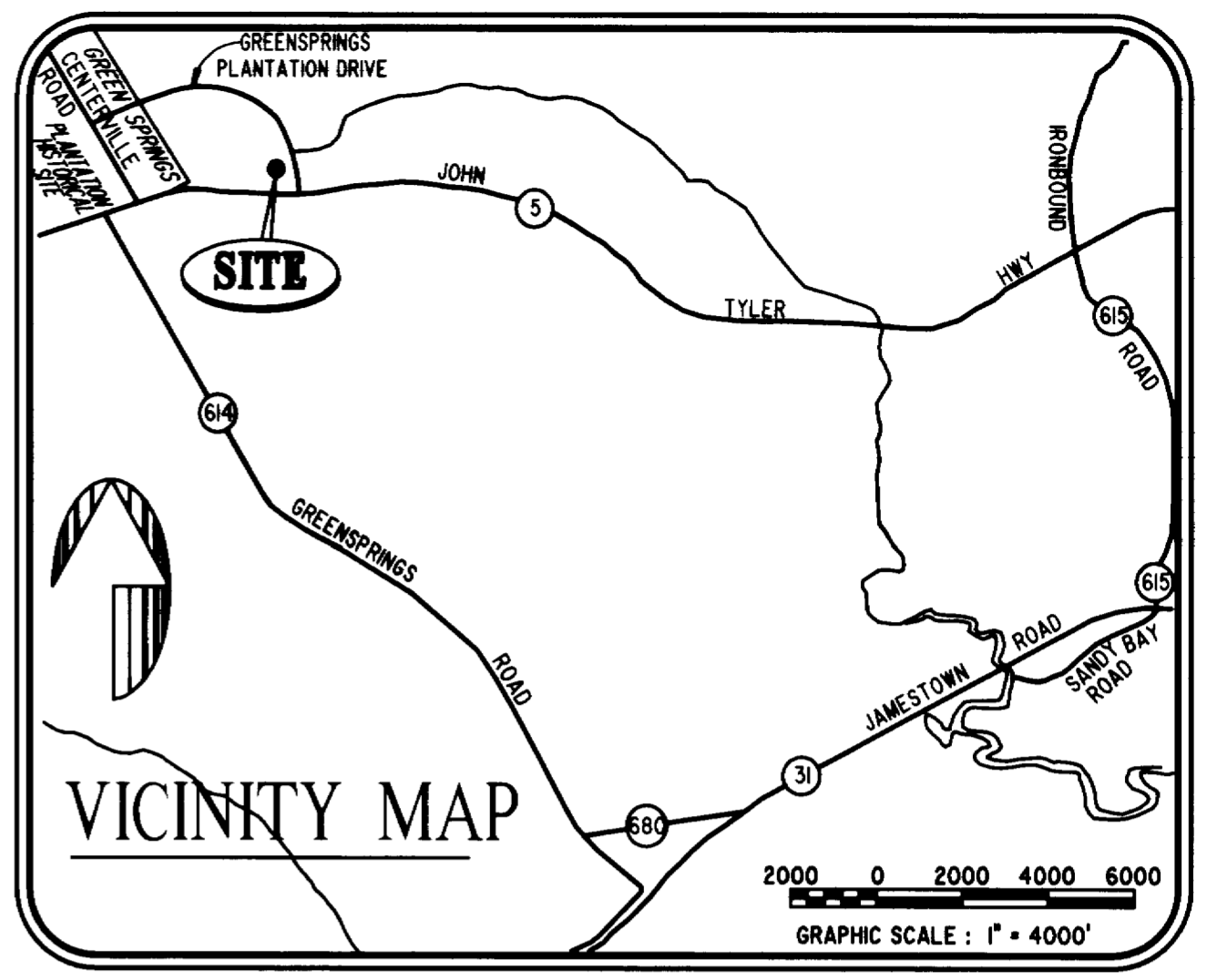


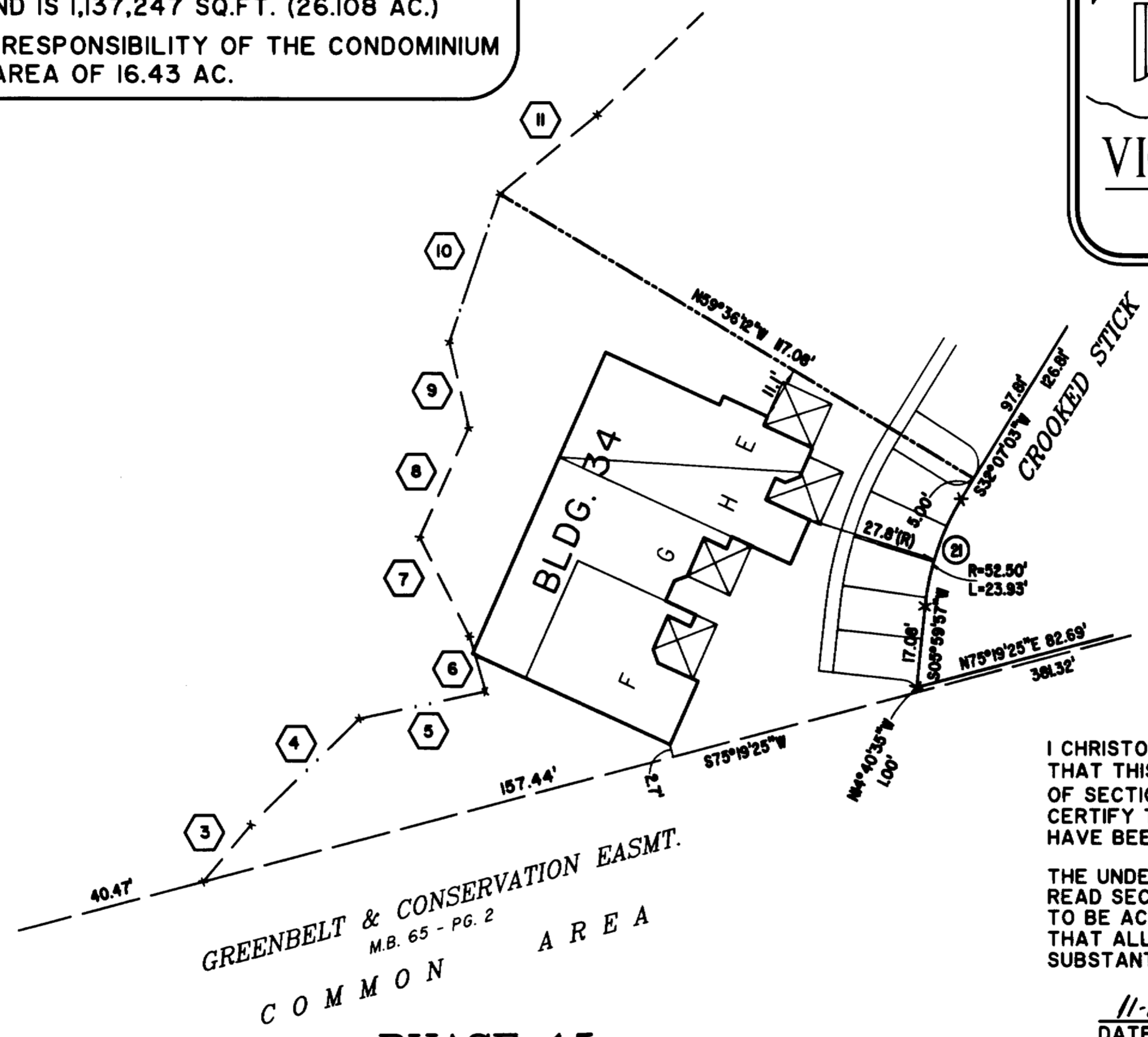
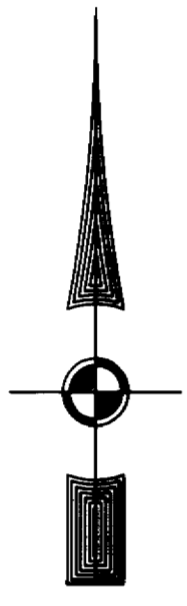
#040002868

BUILDING NUMBER	UNIT NUMBER	UNIT TYPE	STREET ADDRESS
34	34-438	F	438 CROOKED STICK
34	34-440	G	440 CROOKED STICK
34	34-442	H	442 CROOKED STICK
34	34-444	E	444 CROOKED STICK



NOTES:

1. THE TOTAL AREA OF SITE IS 1,222,568 SQ.FT. (28.07 AC.) OF WHICH 85,321 SQ.FT. (1.959 AC.) IS ADDITIONAL LAND.
2. THE AREA OF THE SUBMITTED LAND IS 1,137,247 SQ.FT. (26.108 AC.)
3. THE COMMON AREA IS TO BE THE RESPONSIBILITY OF THE CONDOMINIUM ASSOCIATION AND HAS A TOTAL AREA OF 16.43 AC.



I CHRISTOPHER D. CAPOZZI, A CERTIFIED LAND SURVEYOR, DO HEREBY CERTIFY THAT THIS PLAT IS ACCURATE, AND THAT IT COMPLIES WITH THE PROVISIONS OF SECTION 55 - 79.58A OF THE CODE OF VIRGINIA. I FURTHER HEREBY CERTIFY THAT ALL UNITS OR PORTIONS THEREOF DEPICTED HEREON HAVE BEEN SUBSTANTIALLY COMPLETED.

THE UNDERSIGNED CERTIFIED LAND SURVEYOR CERTIFIES THAT HE HAS READ SECTION 55 - 79.58B OF THE CODE OF VIRGINIA, AND FINDS THIS PLAT TO BE ACCURATE AND IN COMPLIANCE WITH THE CODE. I FURTHER CERTIFY THAT ALL UNITS OR PORTIONS THEREOF DEPICTED HEREON HAVE BEEN SUBSTANTIALLY COMPLETED.

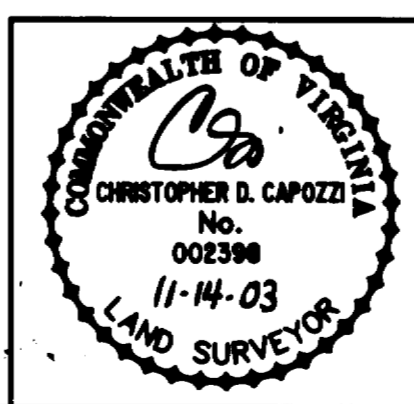
11-14-03
 DATE CHRISTOPHER D. CAPOZZI, VA. L.S. No. 002398

PHASE 15

AREA = 10,232 SQ. FT. = 0.235 AC.

THE EXPRESS PURPOSE OF THIS AMENDED PLAT IS TO REVISE THE ADDRESSES OF UNITS 34-442 AND 34-444. THIS PLAT SUPERCEDES THAT PLAT RECORDED IN PLAT BOOK 89 AT PAGES 91-96.

City of Williamsburg & County of James City Circuit Court. This PLAT was recorded on 28 January 2004 at 3:23 AM/PM. PB — PG —. DOCUMENT # 040002868. BETSY B. WOOLRIDGE, CLERK
Betsy B. Woolridge Clerk



Hassell & Folkes, P.C.
 Engineers Surveyors Planners
 325 Volvo Parkway
 Chesapeake, VA. 23320
 (757) 547-9531

DRAWN BY:	DATE
HJS	11/13/03
COMP BY:	DATE
HF	
CHECKED BY:	DATE
CDC	11/13/03

AMENDED
 EXHIBIT "A" PHASE 15
FAIRWAYS VILLAS
 AT
GREENSPRINGS, A CONDOMINIUM
 FOR
GREENSPRINGS DEVELOPMENT, L.C.
 BERKELEY DISTRICT JAMES CITY COUNTY, VIRGINIA

SIZE	CONTRACT	FILE NAME	REV.
C	95-079	S:\PLATS\FAIRWAYS\FAIRWY15.DWG	
SCALE: 1" = 25'		DATE: 11/13/03	SHEET 1 of 6

#040002868

MATCH LINE SEE SHEET 4

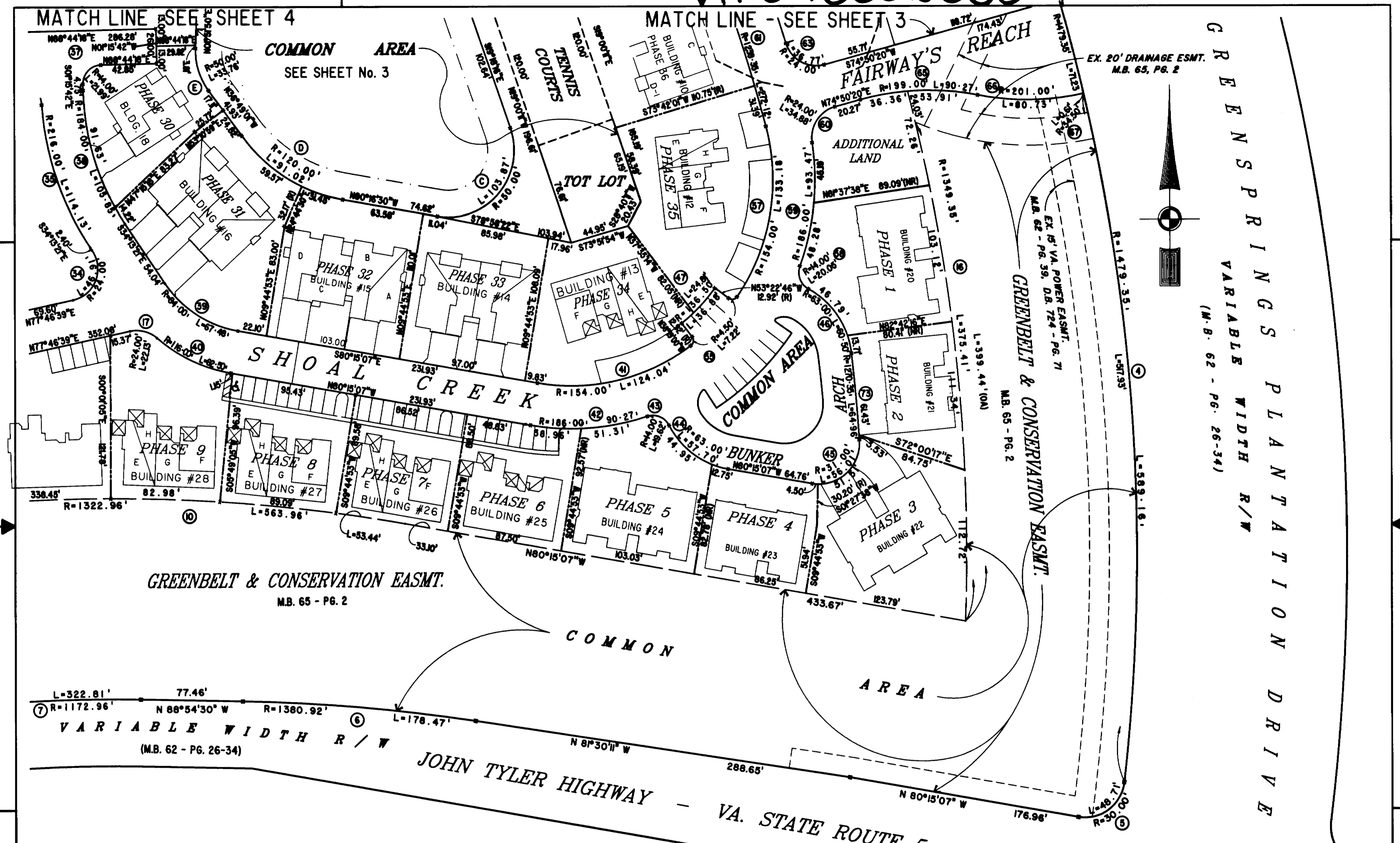
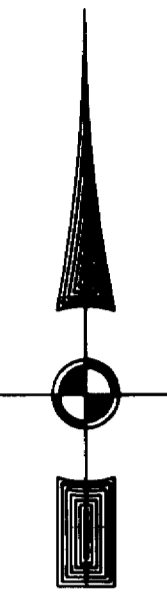
MATCH LINE - SEE SHEET 3

COMMON AREA
SEE SHEET No. 3

FAIRWAYS REACH

EX. 20' DRAINAGE ESMT.
M.B. 65, PG. 2

GREENSPRINGS VARIABLE WIDTH R/W
(M.B. 62 - PG. 26-34)



GREENBELT & CONSERVATION EASMT.
M.B. 65 - PG. 2

VARIABLE WIDTH R/W
(M.B. 62 - PG. 26-34)

JOHN TYLER HIGHWAY - VA. STATE ROUTE 5

City of Williamsburg & County of James City
Circuit Court: This PLAT was recorded on
28 January 2004
at 3:23 AM/PM. PG.
DOCUMENT # 040002868
BETSY B. WOOLRIDGE, CLERK
Betsy B. Woolridge Clerk



Hassell & Folkes, P.C.
Engineers Surveyors Planners
Chesapeake, VA. 23320
(757) 547-9531

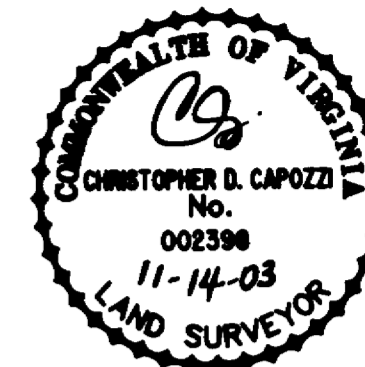
SIZE	CONTRACT NO	FILE NAME	REV.
C	95-079	S:\PLATS\FAIRWAYS\FAIRWY15.DWG	
SCALE: 1" = 50'		DATE: 11/13/03	SHEET 2 of 6

AMENDED
EXHIBIT "A" PHASE 15
FAIRWAYS VILLAS
AT
GREENSPRINGS, A CONDOMINIUM
FOR
GREENSPRINGS DEVELOPMENT, L.C.
BERKELEY DISTRICT JAMES CITY COUNTY, VIRGINIA

#040002868

City of Williamsburg & County of James City
Circuit Court: This PLAT was recorded on
28 January 2004
at 3:23 AM/PM, PG.
DOCUMENT # 040002868
BETSY B. WOOLRIDGE, CLERK
Betsy B. Woolridge Clerk

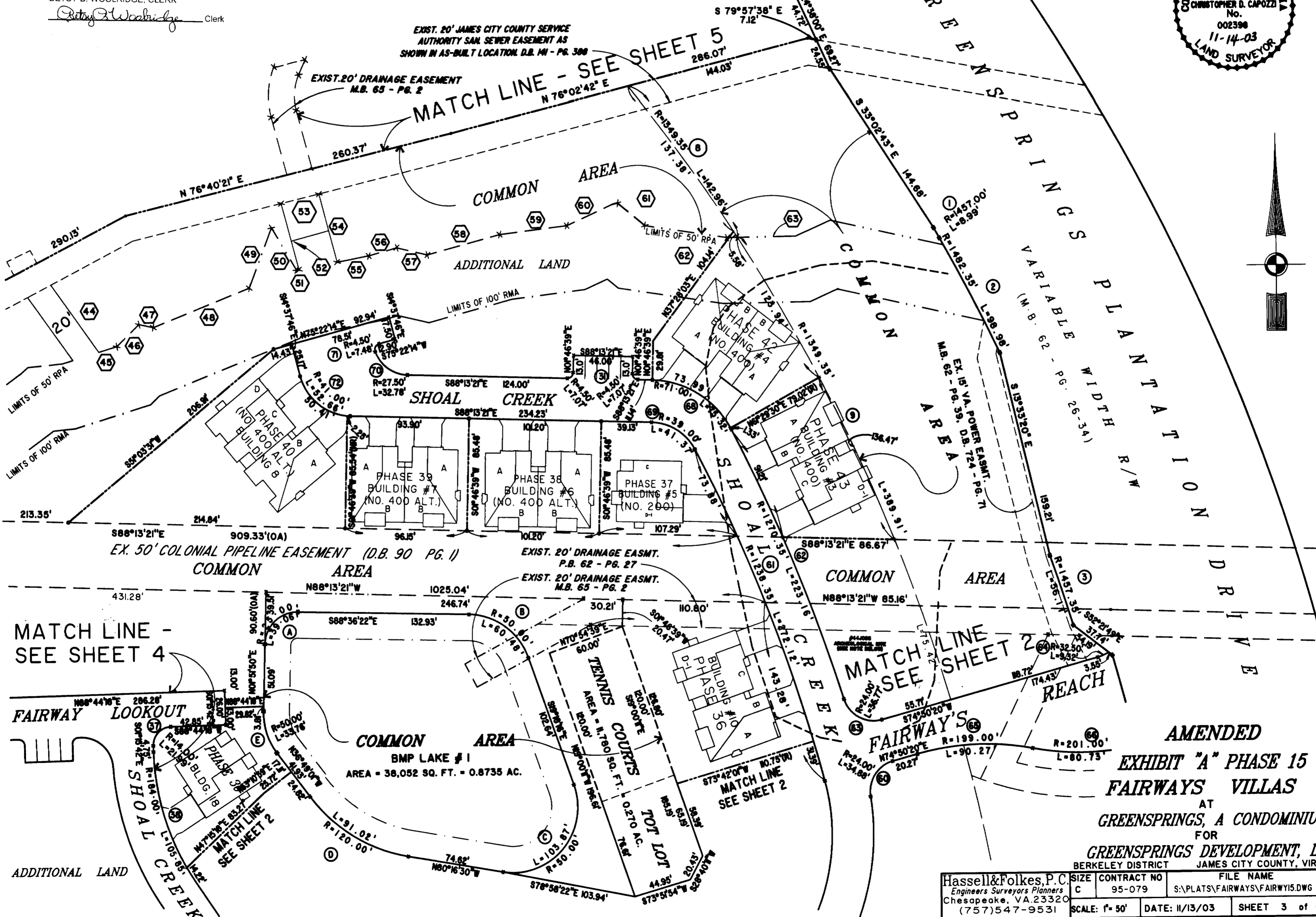
46-1-01-0-0001
"GREENSPRINGS PLANTATION"
(DB 322, PG 254)



EXIST. 20' JAMES CITY COUNTY SERVICE
AUTHORITY SAN SEWER EASEMENT AS
SHOWN IN AS-BUILT LOCATION D.B. 141 - PG. 388

EXIST. 20' DRAINAGE EASEMENT
M.B. 65 - PG. 2

MATCH LINE - SEE SHEET 5



EX. 50' COLONIAL PIPELINE EASEMENT (D.B. 90 PG. 1)
COMMON AREA

EXIST. 20' DRAINAGE EASMT.
P.B. 62 - PG. 27
EXIST. 20' DRAINAGE EASMT.
M.B. 65 - PG. 2

COMMON AREA

MATCH LINE -
SEE SHEET 4

MATCH LINE
SEE SHEET 2

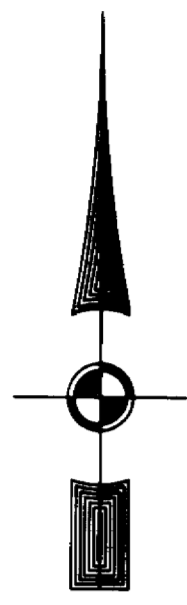
COMMON AREA
BMP LAKE # 1
AREA = 38,052 SQ. FT. = 0.8735 AC.

AMENDED
EXHIBIT "A" PHASE 15
FAIRWAYS VILLAS
AT
GREENSPRINGS, A CONDOMINIUM
FOR
GREENSPRINGS DEVELOPMENT, L.C.
BERKELEY DISTRICT JAMES CITY COUNTY, VIRGINIA

Hassell & Folkes, P.C. Engineers Surveyors Planners Chesapeake, VA 23320 (757) 547-9531	SIZE C	CONTRACT NO 95-079	FILE NAME S:\PLATS\FAIRWAYS\FAIRWY15.DWG	REV.
SCALE: 1" = 50'	DATE: 11/13/03	SHEET 3 of 6		

#040002868

EXIST. 20' JAMES CITY COUNTY SERVICE AUTHORITY SAN. SEWER EASEMENT AS SHOWN IN AS-BUILT LOCATION. D.B. 141 - PG. 388



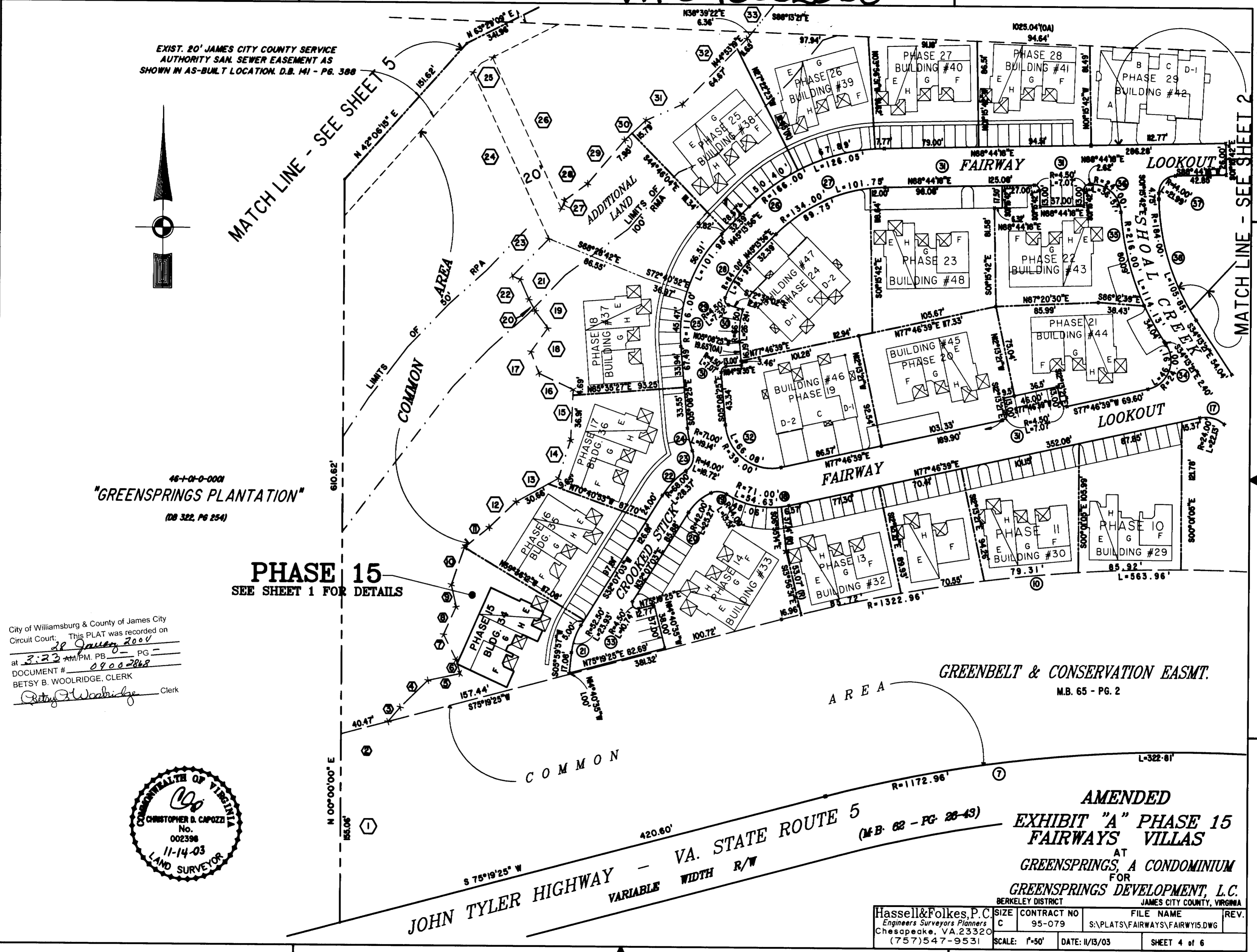
MATCH LINE - SEE SHEET 5

MATCH LINE - SEE SHEET 2

46-1-0-000 "GREENSPRINGS PLANTATION" (DB 322, PG 254)

PHASE 15 SEE SHEET 1 FOR DETAILS

City of Williamsburg & County of James City Circuit Court: This PLAT was recorded on 28 January 2004 at 3:23 AM/PM. PG. DOCUMENT # 04002868 BETSY B. WOOLRIDGE, CLERK



GREENBELT & CONSERVATION EASMT. M.B. 65 - PG. 2

JOHN TYLER HIGHWAY - VA. STATE ROUTE 5 VARIABLE WIDTH R/W

AMENDED EXHIBIT "A" PHASE 15 FAIRWAYS VILLAS AT GREENSPRINGS, A CONDOMINIUM FOR GREENSPRINGS DEVELOPMENT, L.C. BERKELEY DISTRICT JAMES CITY COUNTY, VIRGINIA

Hassell & Folkes, P.C. Engineers Surveyors Planners Chesapeake, VA. 23320 (757)547-9531	SIZE: C	CONTRACT NO: 95-079	FILE NAME: S:\PLATS\FAIRWAYS\FAIRWAY15.DWG	REV.
	SCALE: 1"=50'	DATE: 11/13/03		SHEET 4 of 6

#040002868

City of Williamsburg & County of James City
 Circuit Court: This PLAT was recorded on
28 January 2004
 at 3:25 AM/PM. PG. 5
 DOCUMENT # 040002868
 BETSY B. WOOLRIDGE, CLERK
Betsy B. Woolridge Clerk

46-1-0-0-0001
"GREENSPRINGS PLANTATION"
 (DB 322, PG 254)

EXIST. 20' JAMES CITY COUNTY SERVICE
 AUTHORITY SAN. SEWER EASEMENT AS
 SHOWN IN AS-BUILT LOCATION. D.B. 141 - PG. 8

EXIST. 20' DRAINAGE EASEMENT
 M.B. 65 - PG. 2

EXIST. 20' DRAINAGE EASMT.
 M.B. 65 - PG. 2

COMMON
 AREA

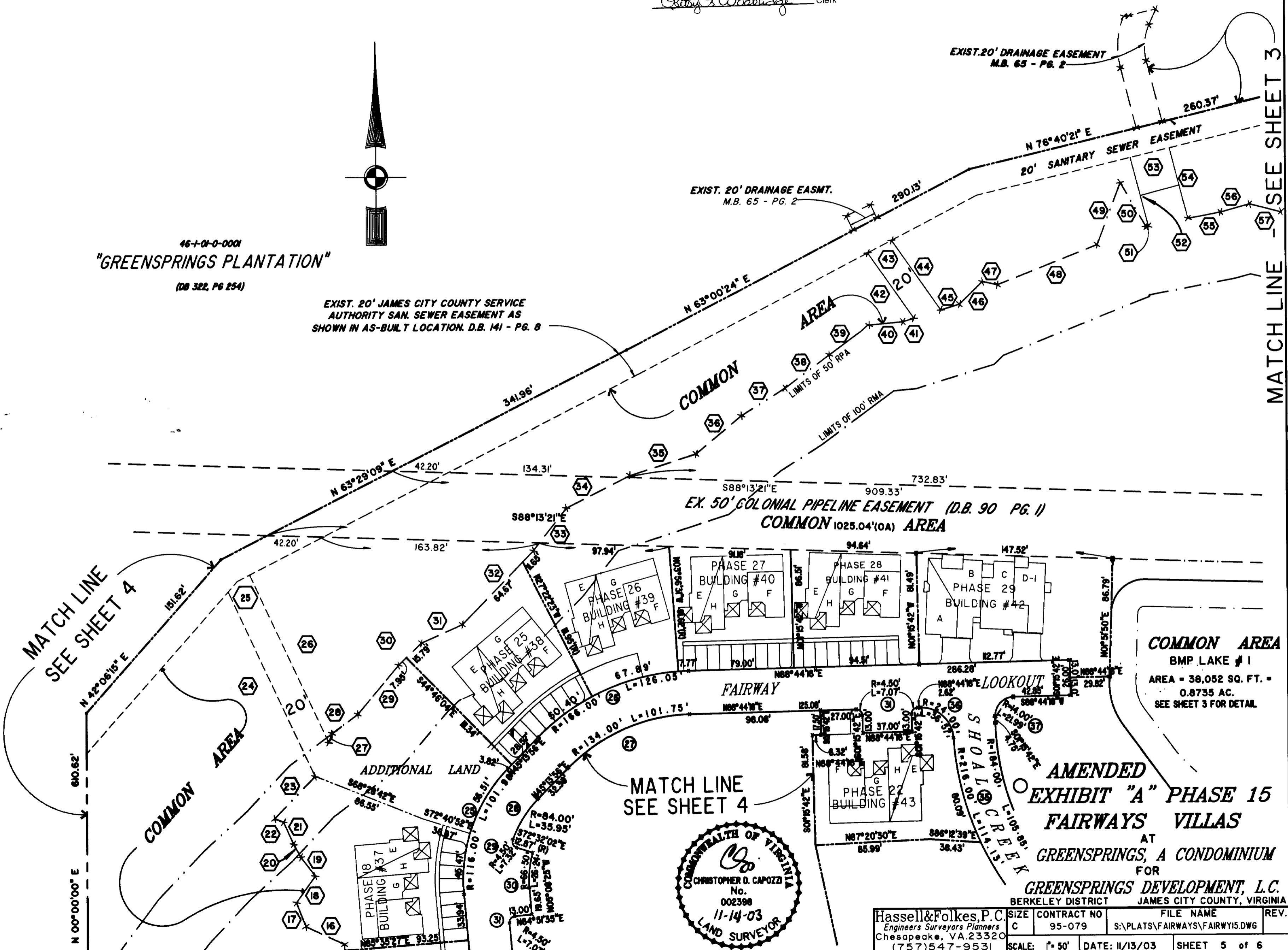
EX. 50' COLONIAL PIPELINE EASEMENT (D.B. 90 PG. 1)
 COMMON 1025.04'(0A) AREA

COMMON AREA
 BMP LAKE # 1
 AREA = 38,052 SQ. FT. =
 0.8735 AC.
 SEE SHEET 3 FOR DETAIL

MATCH LINE
 SEE SHEET 4

MATCH LINE
 SEE SHEET 4

MATCH LINE - SEE SHEET 3



Hassell & Folkes, P.C. Engineers Surveyors Planners Chesapeake, VA 23320 (757) 547-9531	SIZE C	CONTRACT NO 95-079	FILE NAME S:\PLATS\FAIRWAYS\FAIRWY15.DWG	REV.
SCALE: 1" = 50'	DATE: 11/13/03	SHEET 5 of 6		

