

#040002868

City of Williamsburg & County of James City
 Circuit Court: This PLAT was recorded on
28 January 2004
 at 3:25 AM/PM. PG. 5
 DOCUMENT # 040002868
 BETSY B. WOOLRIDGE, CLERK
Betsy B. Woolridge Clerk

46-1-0-0-0001
"GREENSPRINGS PLANTATION"
 (DB 322, PG 254)

EXIST. 20' JAMES CITY COUNTY SERVICE
 AUTHORITY SAN. SEWER EASEMENT AS
 SHOWN IN AS-BUILT LOCATION. D.B. 141 - PG. 8

EXIST. 20' DRAINAGE EASEMENT
 M.B. 65 - PG. 2

EXIST. 20' DRAINAGE EASMT.
 M.B. 65 - PG. 2

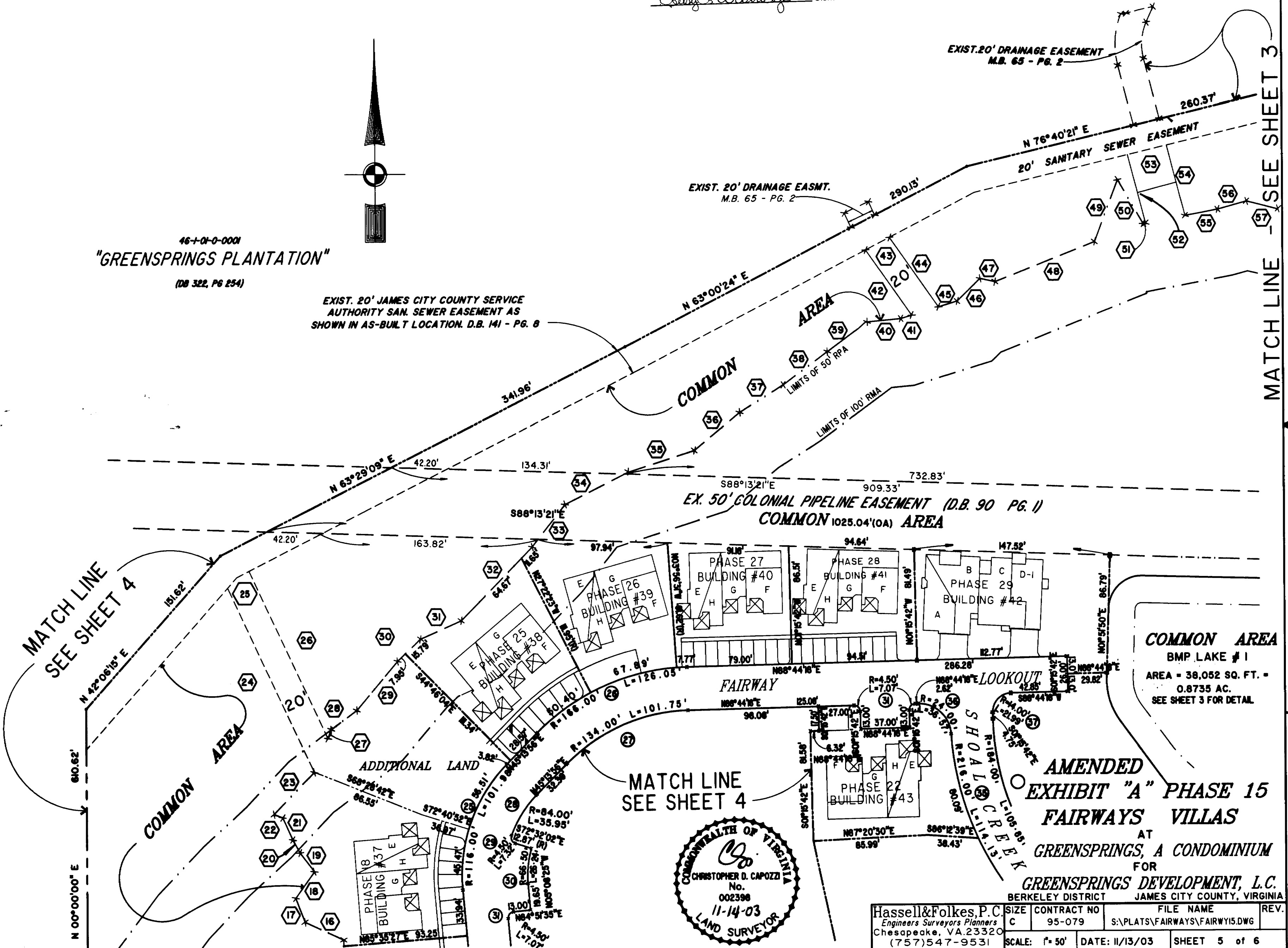
EX. 50' COLONIAL PIPELINE EASEMENT (D.B. 90 PG. 1)
COMMON 1025.04'(0A) AREA

COMMON AREA
 BMP LAKE # 1
 AREA = 38,052 SQ. FT. =
 0.8735 AC.
 SEE SHEET 3 FOR DETAIL

MATCH LINE
 SEE SHEET 4

MATCH LINE
 SEE SHEET 4

MATCH LINE - SEE SHEET 3



Hassell & Folkes, P.C. Engineers Surveyors Planners Chesapeake, VA 23320 (757) 547-9531	SIZE C	CONTRACT NO 95-079	FILE NAME S:\PLATS\FAIRWAYS\FAIRWY15.DWG	REV.
SCALE: 1" = 50'	DATE: 11/13/03	SHEET 5 of 6		