

#040002868

MATCH LINE SEE SHEET 4

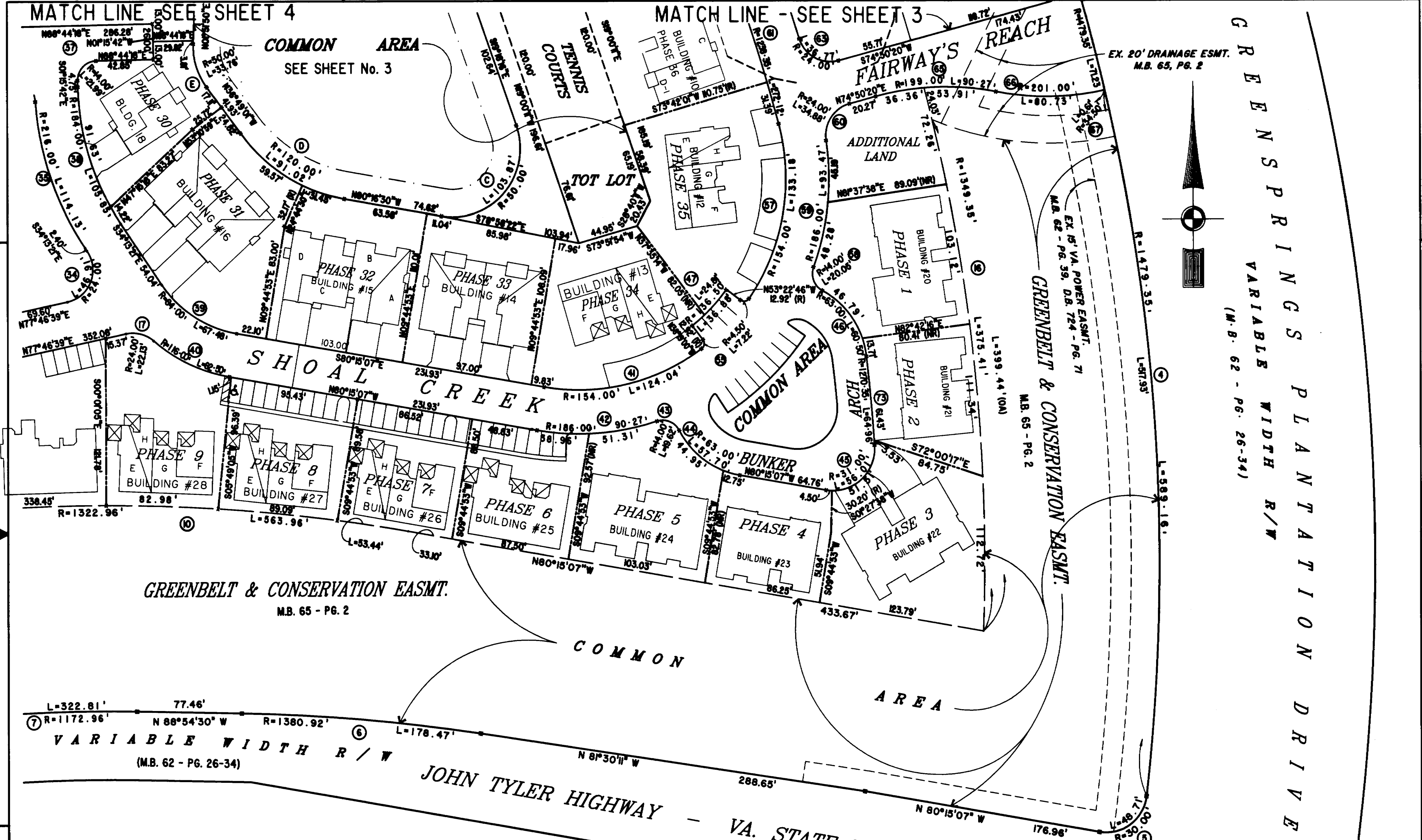
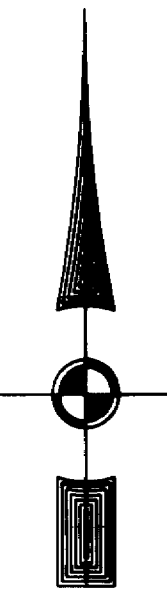
MATCH LINE - SEE SHEET 3

COMMON AREA
SEE SHEET No. 3

FAIRWAYS REACH

EX. 20' DRAINAGE ESMT.
M.B. 65, PG. 2

GREENSPRINGS VARIABLE WIDTH R/W
(M.B. 62 - PG. 26-34)



GREENBELT & CONSERVATION EASMT.
M.B. 65 - PG. 2

VARIABLE WIDTH R/W
(M.B. 62 - PG. 26-34)

JOHN TYLER HIGHWAY - VA. STATE ROUTE 5

City of Williamsburg & County of James City
Circuit Court: This PLAT was recorded on
28 January 2004
at 3:23 AM/PM. PG.
DOCUMENT # 040002868
BETSY B. WOOLRIDGE, CLERK
Betsy B. Woolridge Clerk



Hassell & Folkes, P.C.
Engineers Surveyors Planners
Chesapeake, VA. 23320
(757) 547-9531

SIZE	CONTRACT NO	FILE NAME	REV.
C	95-079	S:\PLATS\FAIRWAYS\FAIRWAY15.DWG	
SCALE: 1" = 50'		DATE: 11/13/03	SHEET 2 of 6

AMENDED
EXHIBIT "A" PHASE 15
FAIRWAYS VILLAS
AT
GREENSPRINGS, A CONDOMINIUM
FOR
GREENSPRINGS DEVELOPMENT, L.C.
BERKELEY DISTRICT JAMES CITY COUNTY, VIRGINIA