

040001591

NO.	DELTA	RADIUS	LENGTH	TANGENT	CHORD	CH. BEARING
C1	16°26'41"	250.00	72.70	38.61	72.44	S43°21'18"W
C2	73°13'27"	65.00	63.07	46.29	77.53	S89°17'51"W
C3	102°00'41"	48.00	115.73	80.26	101.04	N04°08'58"E
C4	123°1'08"	134.00	37.35	18.79	37.23	N30°39'43"E
C5	61°23'08"	54.00	67.72	56.35	76.72	N14°37'23"W
C6	100°00'00"	22.50	70.69	45.00	102°31'04"E	
C7	81°23'08"	65.00	135.57	87.08	121.63	S14°37'23"W
C8	38°42'07"	63.00	34.62	17.29	34.31	N31°31'43"E
C9	72°14'07"	134.00	7.83	3.84	7.82	N43°14'22"E
C10	44°03'25"	22.50	17.34	8.13	16.82	N38°13'55"W
C11	44°03'25"	22.50	17.34	8.13	16.82	S09°02'13"W
C12	17°20'23"	123.00	37.83	18.06	37.89	S26°32'14"E

LOT	DELTA	RADIUS	LENGTH	TANGENT	CHORD	CH. BEARING
51	72°13'27"	250.00	32.80	16.32	32.57	N38°46'24"E
52	81°23'08"	250.00	40.10	20.06	40.06	N47°05'24"E
53	25°26'17"	65.00	26.90	14.60	26.06	N84°26'22"E
54	17°20'23"	65.00	18.46	7.77	18.42	N83°34'22"E
55	15°15'09"	65.00	15.03	7.50	15.00	S62°35'17"E
56	15°17'36"	65.00	15.46	7.77	15.42	S61°06'37"E
57A	34°22'44"	63.00	4.02	2.01	4.02	S88°18'13"E
57B	71°42'44"	63.00	8.22	4.12	8.21	S88°18'13"E
58	40°09'54"	65.00	48.51	24.30	45.32	S71°03'05"E
59	131°01'07"	65.00	15.31	7.59	15.06	S03°53'36"E
60	132°23'12"	65.00	15.17	7.82	15.13	S02°27'03"W
61	142°30'17"	134.00	29.42	14.77	29.37	S57°16'48"W
64	81°23'08"	54.00	67.72	56.35	76.72	S14°37'23"E
67	11°28'08"	65.00	17.86	8.87	17.65	N18°27'18"W
68	29°08'37"	65.00	43.26	22.11	42.79	N39°28'40"W
69	61°42'08"	65.00	9.28	4.63	9.25	N57°11'52"W
73	61°42'08"	22.50	22.19	12.06	21.30	N68°14'04"W
74	72°14'07"	22.50	31.15	18.68	28.72	S23°30'37"E

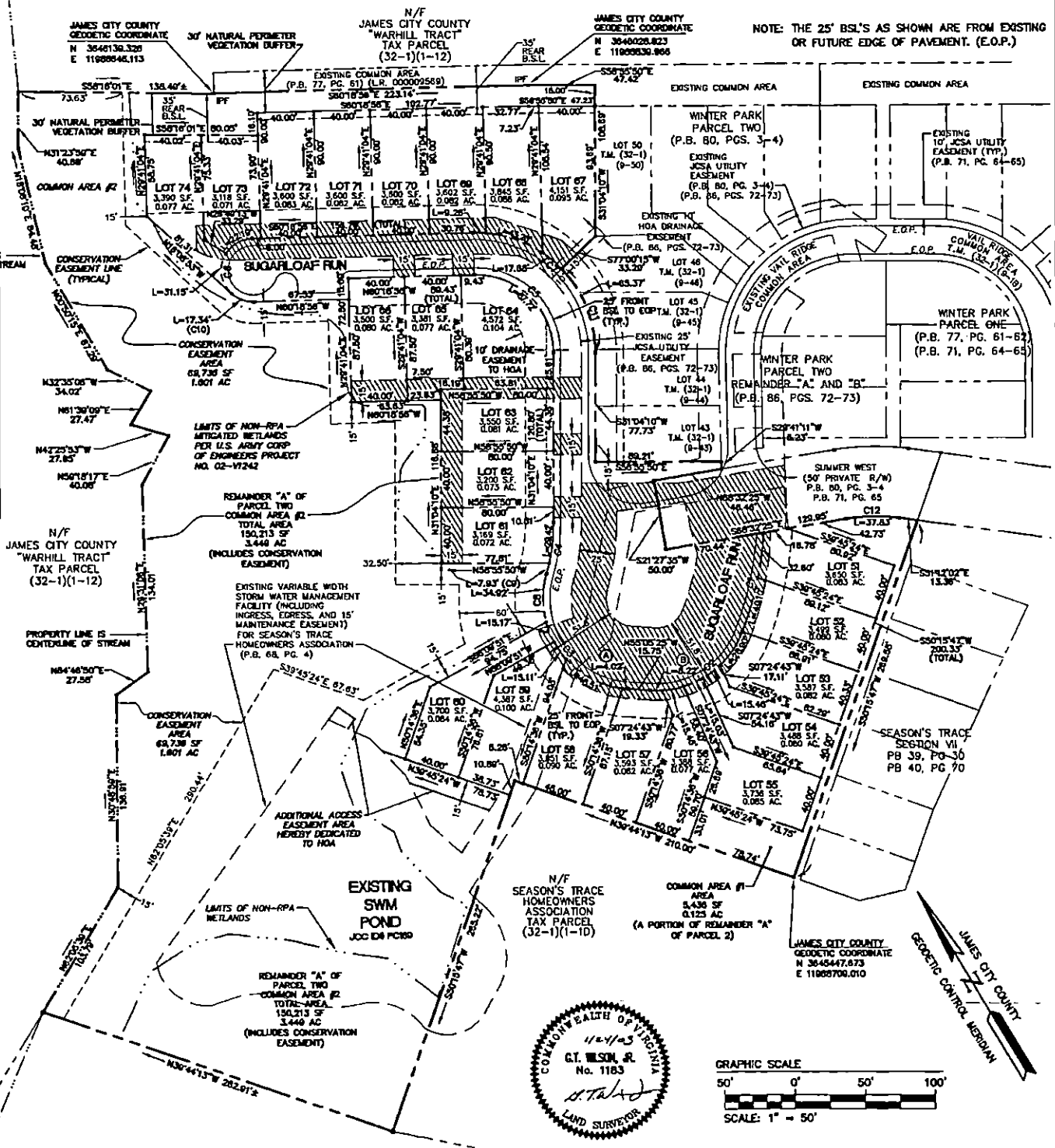
City of Williamsburg & County of James City
 Circuit Court: This PLAT was recorded on
13 January 2004
 at 11:48 AM, P.M. PG. 8
 DOCUMENT # 040001591
 BETSY B. WOOLRIDGE, CLERK
Betsy B. Woolridge Clerk

GRINDER PUMP CALCULATIONS
 (ALL LOTS REQUIRE A GRINDER PUMP)

Lot #	Max Flow Per Lot (gpm)	TDM (ft)
51-60	11	42.57
61-63	11	76.43
64-66	11	74.34
67-74	11	59.49

(ABOVE CALCULATIONS ARE PER E-MAIL RECEIVED FROM BOB OLIVER, P.E. DATED 10/06/03.)

 EXCLUSIVE VARIABLE WIDTH UTILITY EASEMENT HEREBY DEDICATED TO THE JCSA



NOTE: THE 25' BSL'S AS SHOWN ARE FROM EXISTING OR FUTURE EDGE OF PAVEMENT. (E.O.P.)

NO.	DATE	REVISION / COMMENT / NOTE
1	10/13/03	REVISED PER COUNTY COMMENTS
2	11/29/03	REVISED PER JCSA COMMENTS

5248 Olds Towne Road, Suite 1
 Williamsburg, Virginia 23188
 (757) 265-0040
 Fax (757) 220-8894



PLAT OF SUBDIVISION
 REMAINDER 'A' OF PARCEL TWO
 WINTER PARK
 LOTS 51-74
 OWNED BY
 JAMESTOWN BUILDING CORPORATION, INC.
 FARMHAY DISTRICT JAMES CITY COUNTY, VIRGINIA

Designed	Drawn
GTW	JFS
Scale	Date
1"=50'	1/24/03
Project No.	
7787-8	
Drawing No.	
2 OF 2	

JFS 11.25.03-13.47 77870603.dwg