

#032551

EXHIBIT B-20
 SUPPLEMENTAL CONDOMINIUM PLAN
 OF
 WYNDHAM PLANTATION
 CONDOMINIUM

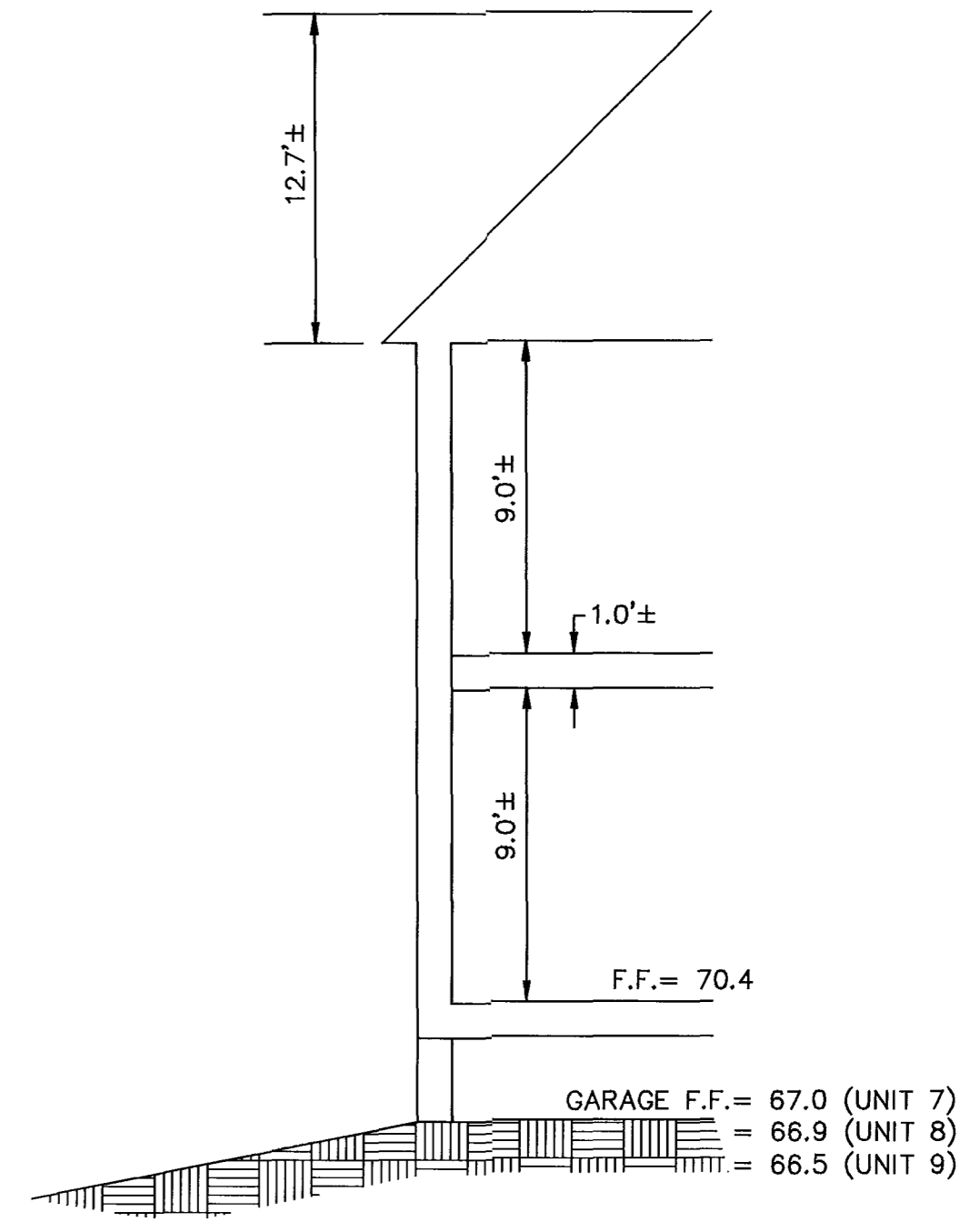
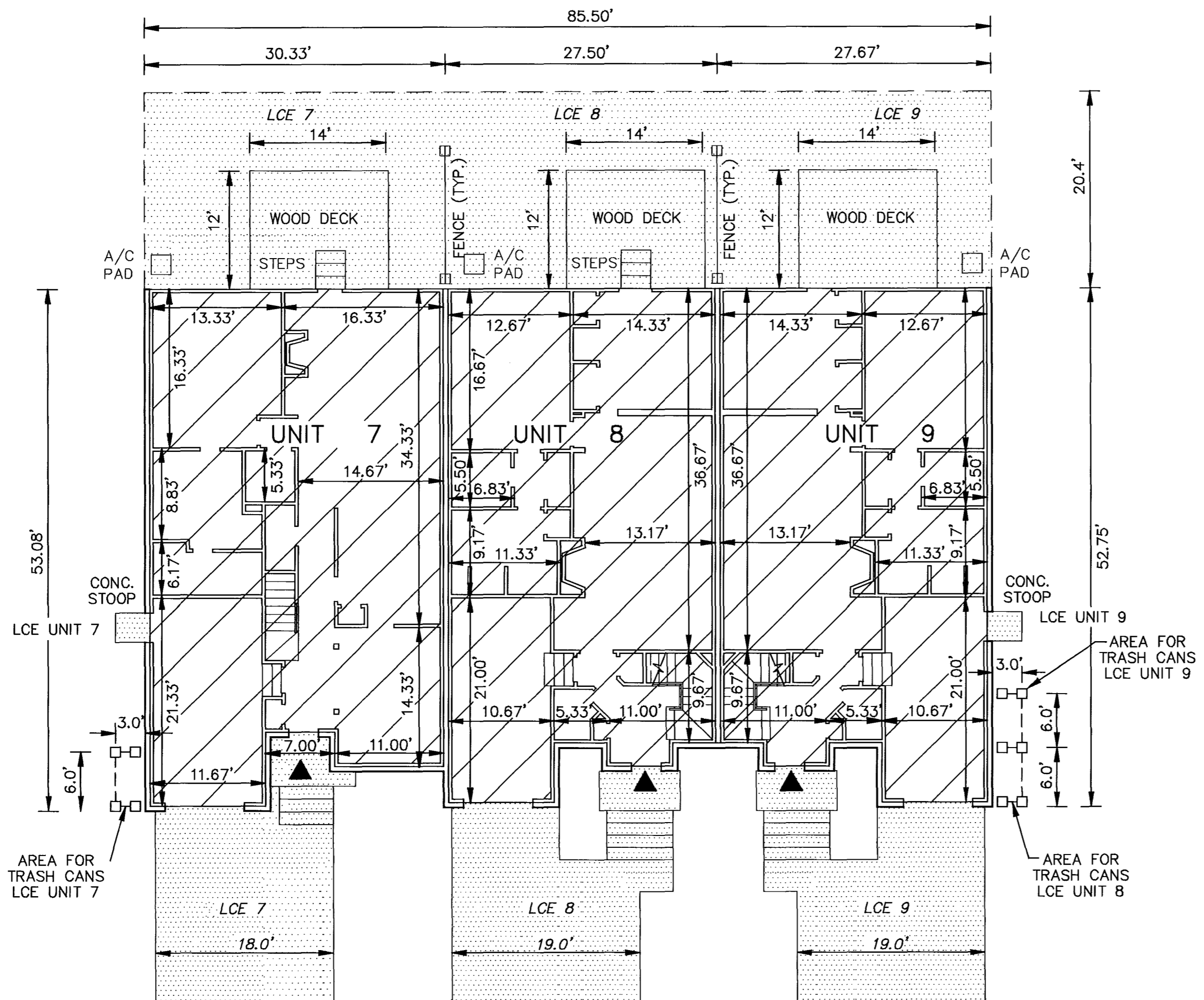
WILLIAMSBURG, VIRGINIA
 SCALE: 1"=10' OCTOBER 28, 2003
 JOHN E. SIRINE AND ASSOCIATES, LTD.
 SURVEYORS • ENGINEERS • PLANNERS
 VIRGINIA BEACH, VIRGINIA
 (757) 486-4910

NOTES:

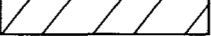
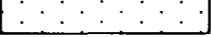

- BUILDING DIMENSIONS SHOWN HEREON ARE INTERIOR DIMENSIONS. THESE DIMENSIONS ARE IN FEET AND WERE TAKEN FROM PLANS SUPPLIED ENTITLED "WYNDHAM PLANTATION AT WILLIAMSBURG, FLOOR PLANS" BY PROGRESSIVE DESIGNS DATED 11/19/98.
- INTERIOR UNIT CONFIGURATIONS AND PARTITIONS AS DEPICTED HEREON ARE FOR THE PURPOSE OF ILLUSTRATION ONLY AND MAY NOT REPRESENT THE INTERIOR OF A UNIT AS ACTUALLY CONSTRUCTED.

FIRST FLOOR - BUILDING 32

SCALE: 1"=10'



SCALE: 1"=5'

-  UNIT AREA
-  LIMITED COMMON ELEMENT TO THE UNIT INDICATED (LCE)
-  INDICATES FRONT ENTRANCE TO UNIT

PHASE	UNIT No.	UNIT ADDRESS	UNIT AREA
22	7	201 ZELKOVA ROAD	1,853 S.F.
22	8	205 ZELKOVA ROAD	1,800 S.F.
22	9	209 ZELKOVA ROAD	1,800 S.F.

THE UNDERSIGNED CERTIFIES THAT THESE PLANS ARE ACCURATE AND COMPLY WITH THE PROVISIONS OF CODE OF VIRGINIA, SECTION 55-79.58.B AND THAT ALL UNITS OR PORTIONS THEREOF DEPICTED HEREON AND ALL COMMON ELEMENTS HAVE BEEN SUBSTANTIALLY COMPLETED, UNLESS OTHERWISE NOTED.

City of Williamsburg & County of James City
 Circuit Court: This PLAT was recorded on
 11-07-2003
 at 3:04 PM, PG
 DOCUMENT # 032551
 BETSY B. WOOLRIDGE, CLERK
 Betsy B. Woolridge Clerk

SIGNED: Jeffrey D. Williams
 JEFFREY D. WILLIAMS, L.S.

