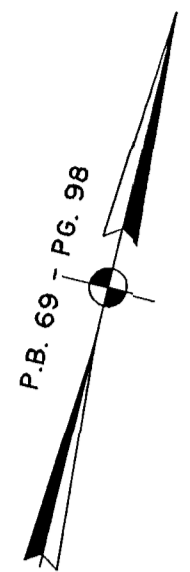


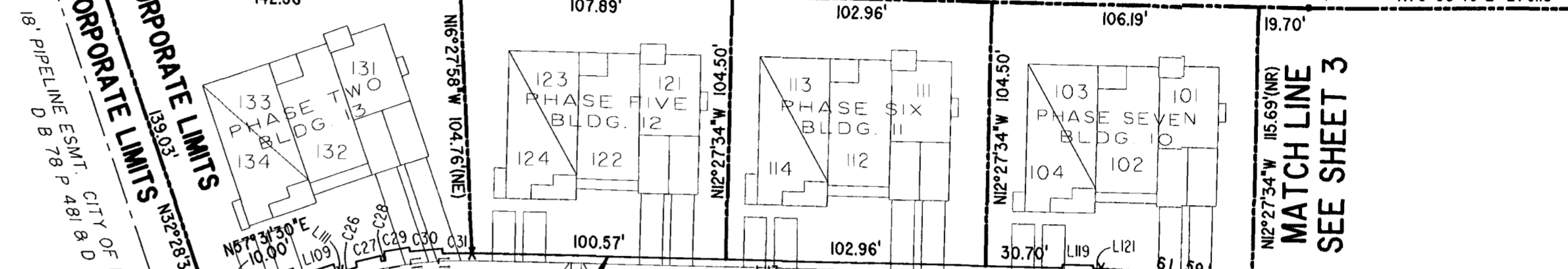
#032351



P.B. 69 P.G. 98

JAMES CITY COUNTY TP 33-3-01-27  
NOW OR FORMERLY  
ARTCRAFT - STRATFORD, L.C.  
D.B. 649 P. 470

CITY OF WILLIAMSBURG CORPORATE LIMITS  
JAMES CITY COUNTY CORPORATE LIMITS



MATCH LINE  
SEE SHEET 3

JAMES CITY COUNTY TP 33-3-01-30  
NOW OR FORMERLY  
PHILIP RICHARDSON CO., INC.  
P.B. 69 P. 98  
INST. #980012581

DETAIL  
N.T.S.

PHASE FOURTEEN, PART B  
COMMON ELEMENT AREA = 58,275 SQ. FT. = 1.338 AC

STORMWATER EASEMENT  
INST. #000896

TP 281-03-00-A  
NOW OR FORMERLY  
SALAH & CHANG TURKMANI  
D.B. 94 P. 92

TP 281-10-00-B  
NOW OR FORMERLY  
752 L.L.C.  
INST. #980305

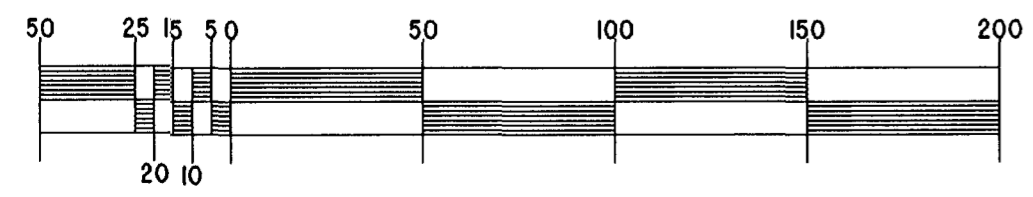
City of Williamsburg & County of James City  
Circuit Court: This PLAT was recorded on  
17 October 2003  
at 10:57 AM/PM. PG. 1  
DOCUMENT # 032351  
BETSY B. WOOLRIDGE, CLERK  
*Betsy B. Woolridge* Clerk

EXHIBIT "A"  
CLAIBORNE  
(A CONDOMINIUM COMMUNITY)  
PHASE SIXTEEN

CITY OF WILLIAMSBURG, VIRGINIA

Hassell & Folkes, P.C. Engineers Surveyors Planners Chesapeake, VA 23320 (757) 547-9531	SIZE C	CONTRACT NO	FILE NAME 5:\PROJECTS\CLAIRBORNE\PH-16-BLDG-6.DWG	REV.
SCALE: 1" = 50'	DATE: 10/03/03	SHEET 4 of 5		

GRAPHIC SCALE: 1" = 50'



A-1520

A-1520