

#032351

JAMES CITY COUNTY TP 33-3-01-27  
NOW OR FORMERLY  
ARTCRAFT - STRATFORD, L.C.  
D.B. 649 P. 470

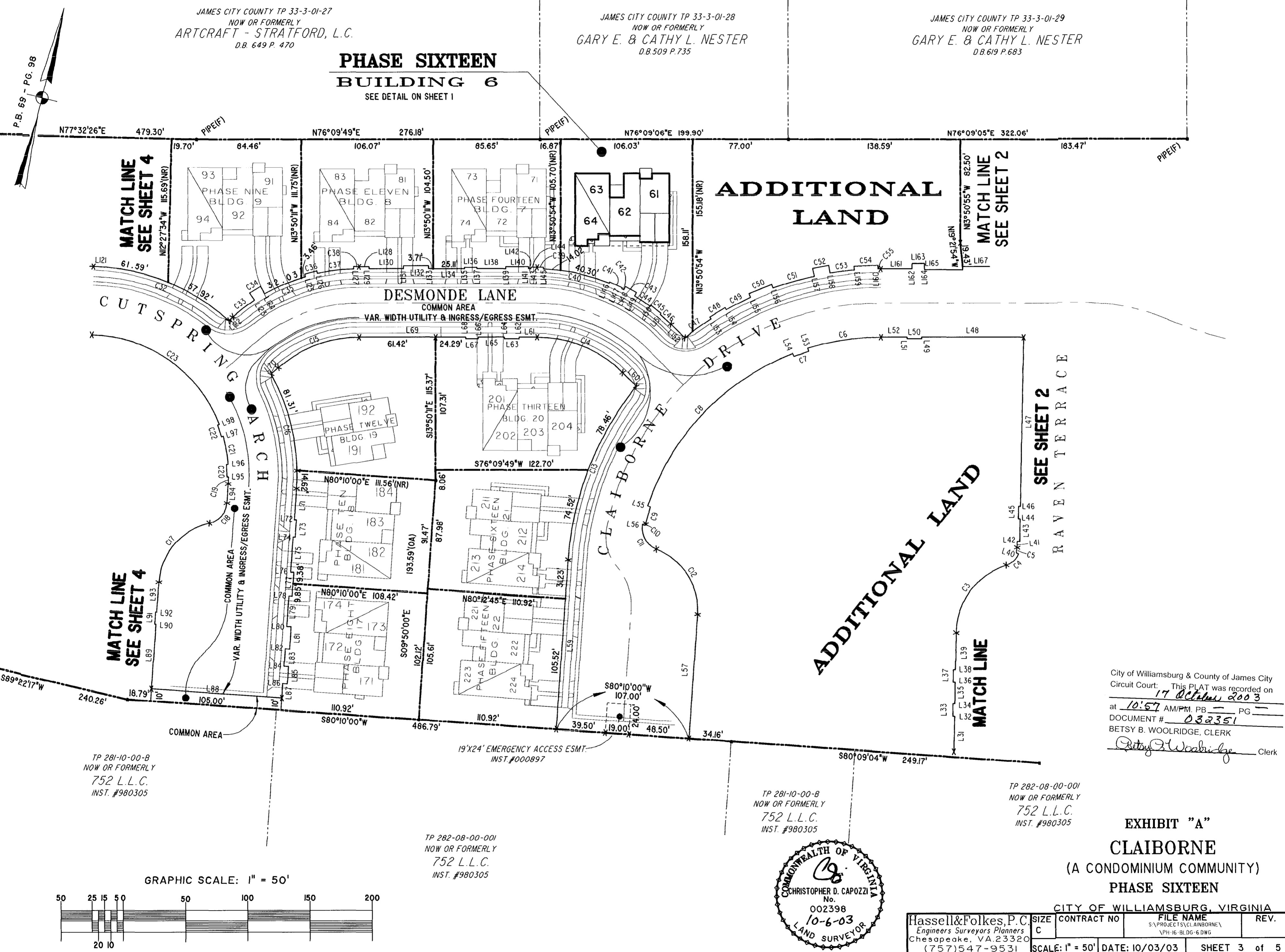
JAMES CITY COUNTY TP 33-3-01-28  
NOW OR FORMERLY  
GARY E. & CATHY L. NESTER  
D.B. 509 P. 735

JAMES CITY COUNTY TP 33-3-01-29  
NOW OR FORMERLY  
GARY E. & CATHY L. NESTER  
D.B. 619 P. 683

**PHASE SIXTEEN  
BUILDING 6**  
SEE DETAIL ON SHEET 1

**ADDITIONAL  
LAND**

**ADDITIONAL  
LAND**



MATCH LINE  
SEE SHEET 4

MATCH LINE  
SEE SHEET 2

MATCH LINE  
SEE SHEET 4

MATCH LINE

SEE SHEET 2  
RAVEN TERRACE

City of Williamsburg & County of James City  
Circuit Court: This PLAT was recorded on  
17 October 2003  
at 10:57 AM/PM. PB      PG       
DOCUMENT # 032351  
BETSY B. WOOLRIDGE, CLERK  
*Betsy B. Woolridge* Clerk

**EXHIBIT "A"**  
**CLAIBORNE**  
(A CONDOMINIUM COMMUNITY)  
**PHASE SIXTEEN**

CITY OF WILLIAMSBURG, VIRGINIA

Hassell & Folkes, P.C. Engineers Surveyors Planners Chesapeake, VA 23320 (757) 547-9531	SIZE C	CONTRACT NO	FILE NAME S:\PROJECTS\CLAIBORNE\ 1PH-16-BLDG-6.DWG	REV.
SCALE: 1" = 50'	DATE: 10/03/03	SHEET 3 of 5		



TP 281-10-00-B  
NOW OR FORMERLY  
752 L.L.C.  
INST. #980305

TP 282-08-00-001  
NOW OR FORMERLY  
752 L.L.C.  
INST. #980305

TP 281-10-00-B  
NOW OR FORMERLY  
752 L.L.C.  
INST. #980305

TP 282-08-00-001  
NOW OR FORMERLY  
752 L.L.C.  
INST. #980305

GRAPHIC SCALE: 1" = 50'

