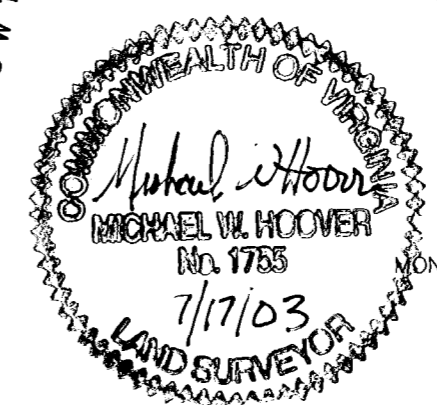


#032019

LINE	BEARING	DISTANCE
L1	S14°34'43"W	12.61'
L2	N14°34'43"E	10.04'
L3	S18°41'57"W	13.36'
L4	N18°41'57"E	17.49'
L5	N76°53'48"W	22.48'
L6	N18°44'19"E	15.44'
L7	N77°11'08"W	13.50'
L8	N18°23'03"E	17.50'
L9	S77°15'58"E	3.92'
L10	S71°36'57"E	2.59'
L11	S42°39'36"W	93.71'
L12	S23°11'24"W	131.28'
L13	S09°13'19"W	16.99'

TM #461-03-00-002
THE CITY OF WILLIAMSBURG
DB 82 PG 774
DB 69 PG 15

TM #461-03-00-001
THE COLLEGE OF WILLIAM AND MARY
INST #980409
PB 69 PG 15



PLAT SHOWING
STRAWBERRY PLAINS SUBDIVISION
CITY OF WILLIAMSBURG, VIRGINIA

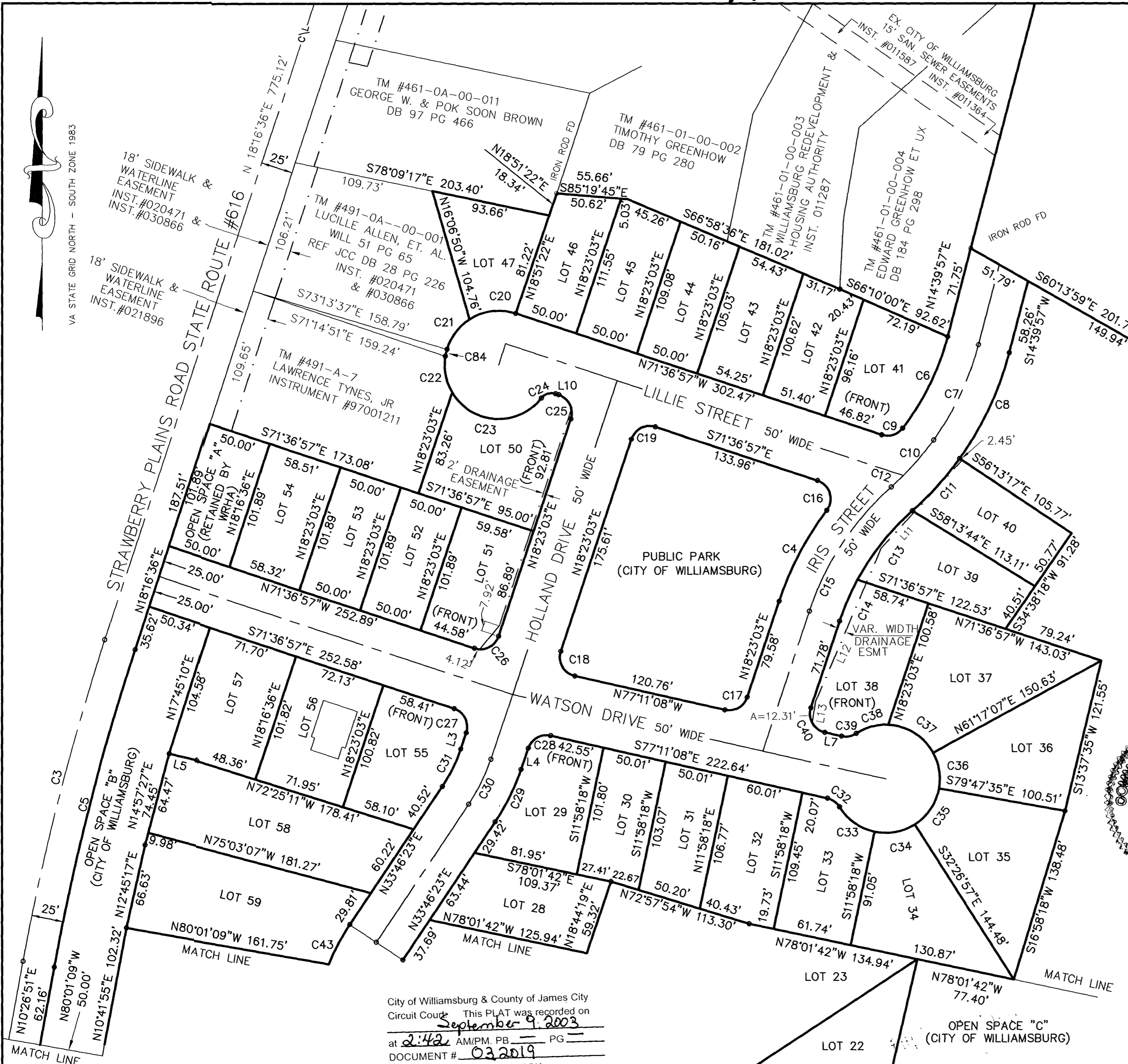
Dewberry & Davis, Inc.

9881 Mayland Drive, Suite 201
Richmond, Virginia 23233
(804) 290-7957 FAX (804)-290-7928
www.dewberry.com

Architects
Engineers
Planners
Surveyors

City of Williamsburg & County of James City
Circuit Court This PLAT was recorded on
September 9, 2003
at 2:42 AM/PM, PG
DOCUMENT # 032019
BETSY B. WOOLRIDGE, CLERK
Betsy B. Woolridge Clerk

VA STATE GRID NORTH - SOUTH ZONE 1983



SCALE: 1" = 60'