

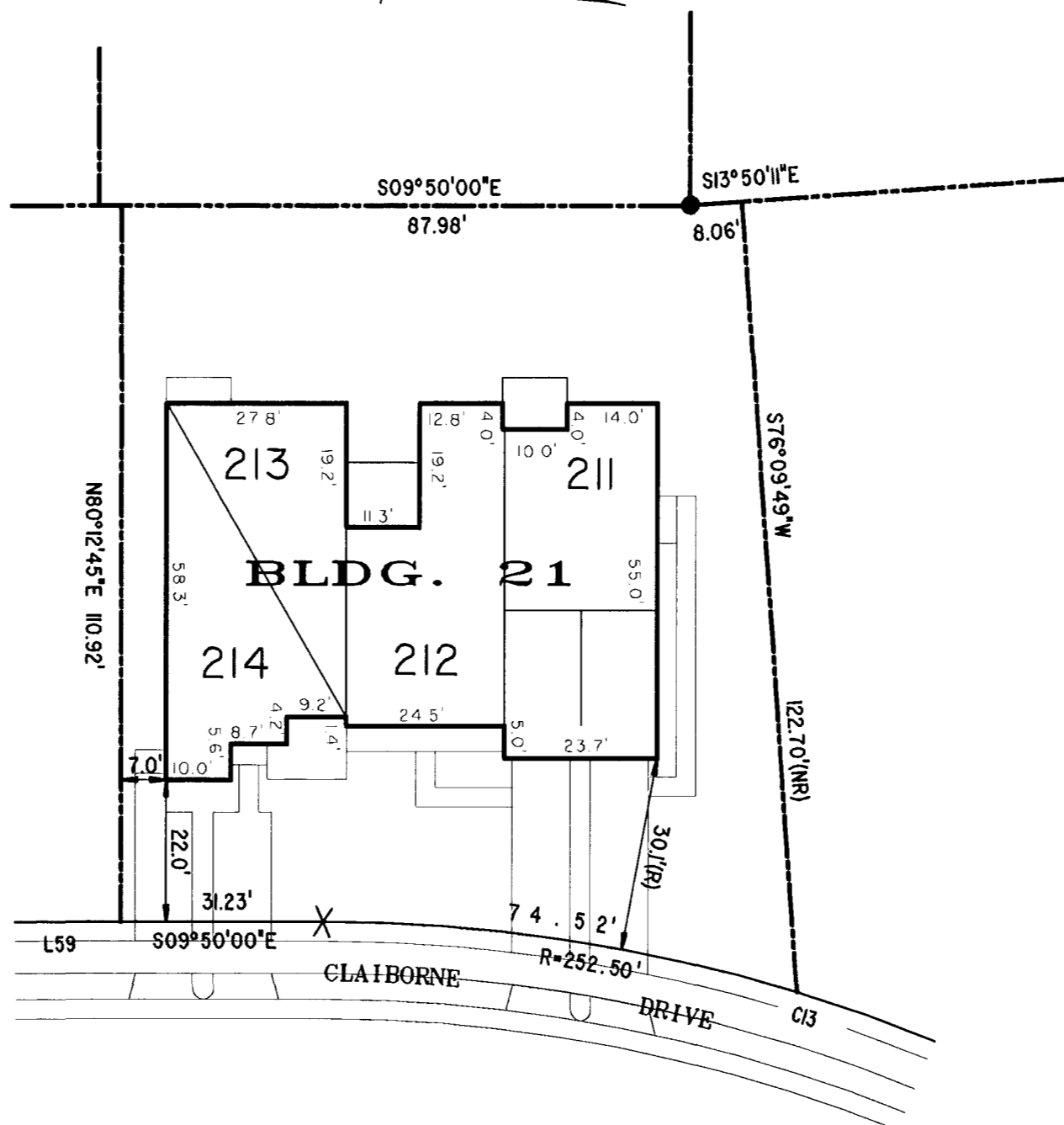
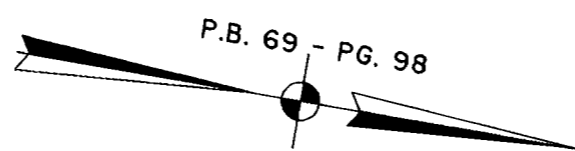
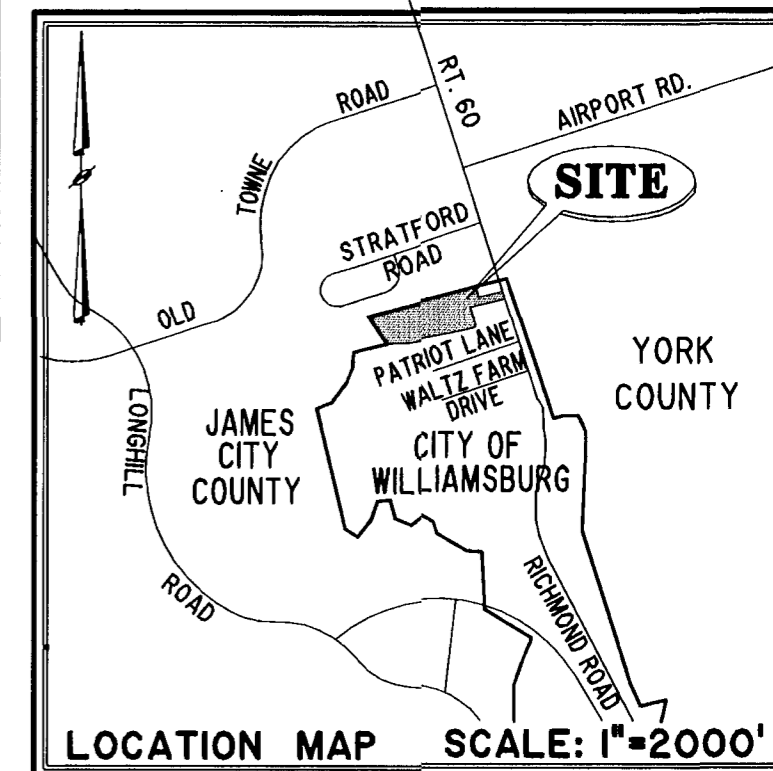
#031942

91 PAGE 44

NOTES:

1. THE TOTAL AREA OF SITE IS 644,256 SQ.FT. (14.790 AC.) OF WHICH 207,668 SQ.FT. (4.767 AC.) IS ADDITIONAL LAND.
2. THE AREA OF THE SUBMITTED LAND IS 436,588 SQ.FT. (10.022 AC.)
3. THE COMMON AREA IS TO BE THE RESPONSIBILITY OF THE CONDOMINIUM ASSOCIATION AND HAS A TOTAL AREA OF 5.774 AC.

BUILDING NUMBER	UNIT NUMBER	UNIT TYPE	STREET ADDRESS
21	21-211	D	211 CLAIBORNE DRIVE
21	21-212	C	212 CLAIBORNE DRIVE
21	21-213	A3	213 CLAIBORNE DRIVE
21	21-214	E3	214 CLAIBORNE DRIVE



PHASE SEVENTEEN

BLDG. 21

AREA = 11,379 SQ. FT. = 0.261

City of Williamsburg & County of James City
Circuit Court: This PLAT was recorded on
29 August 2003
at 3:25 AM/PM. PB 91 PG 44-48
DOCUMENT # 031942
BETSY B. WOOLRIDGE, CLERK

Betsy B. Woolridge Clerk

EXHIBIT "A"

CLAIBORNE
(A CONDOMINIUM COMMUNITY)
PHASE SEVENTEEN

CITY OF WILLIAMSBURG, VIRGINIA

SIZE	CONTRACT NO	FILE NAME	REV.
C	98132	S:\PLATS\CLAIBORNE\PH-15-BLDG-22.DWG	

SCALE: N/A DATE: 08/18/03 SHEET 1 of 5

I CHRISTOPHER D. CAPOZZI, A CERTIFIED LAND SURVEYOR, DO HEREBY CERTIFY THAT THIS PLAT IS ACCURATE, AND THAT IT COMPLIES WITH THE PROVISIONS OF SECTION 55 - 79.58A OF THE CODE OF VIRGINIA. I FURTHER HEREBY CERTIFY THAT ALL UNITS OR PORTIONS THEREOF DEPICTED HEREON HAVE BEEN SUBSTANTIALLY COMPLETED.

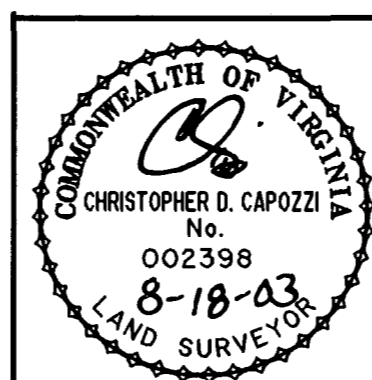
THE UNDERSIGNED CERTIFIED LAND SURVEYOR CERTIFIES THAT HE HAS READ SECTION 55 - 79.58B OF THE CODE OF VIRGINIA, AND FINDS THESE PLANS TO BE ACCURATE AND IN COMPLIANCE WITH THE CODE. I FURTHER CERTIFY THAT ALL UNITS OR PORTIONS THEREOF DEPICTED HEREON HAVE BEEN SUBSTANTIALLY COMPLETED.

8-18-03

DATE

CHRISTOPHER D. CAPOZZI, VA L.S. No. 002398

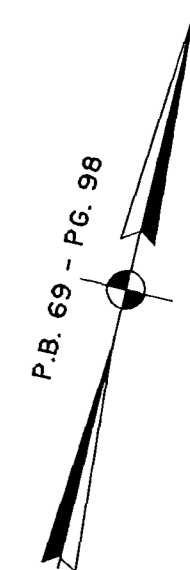
A-1520



Hassell & Folkes, P.C.
Engineers Surveyors Planners
325 Volvo Parkway
Chesapeake, VA 23320
(757) 547-9531

DRAWN BY:	DATE
HJS	06/12/03
COMP BY:	DATE
HBA	10/01/02
CHECKED BY:	DATE
CDC	07/14/03

A-1520



JAMES CITY COUNTY TP 33-3-01-29
NOW OR FORMERLY
GARY E. & CATHY L. NESTER
D.B. 619 P. 603

JAMES CITY COUNTY TP 33-3-01-24
NOW OR FORMERLY
GOLDEN KNIGHTS, INC.
D.B. 568 P. 316

MATCH LINE
SEE SHEET 3

ADDITIONAL LAND

L165
L166
L167
L168
L169
L170
L171
L172
L173
L174
L175
L176
L177
L178
L179
L180
L181
L182
L183
L184
L185
L186
L187
L188
L189

SEE SHEET 3

RAVEN TERRACE
VAR. WIDTH UTILITY & INGRESS/EGRESS ESMT.
COMMON AREA

ADDITIONAL LAND

MATCH LINE
SEE SHEET 3

L30
L31
L32
L33
L34
L35
L36
L37
L38
L39
L40
L41
L42
L43
L44
L45
L46
L47

CLAIBORNE DRIVE

VAR. WIDTH UTILITY & INGRESS/EGRESS ESMT.
COMMON AREA

MARK II INVESTMENTS LTD.
D.B. 130 P. 671

COMMON AREA - PHASE ONE

CHELSEA GCA REALTY PARTNERSHIP, L.P.
D.B. 113 P. 693

CHELSEA GCA REALTY PARTNERSHIP, L.P.
D.B. 106 P. 407

DETAIL
N.T.S.

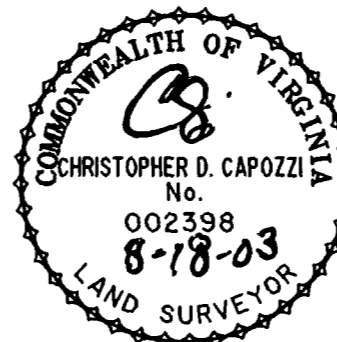
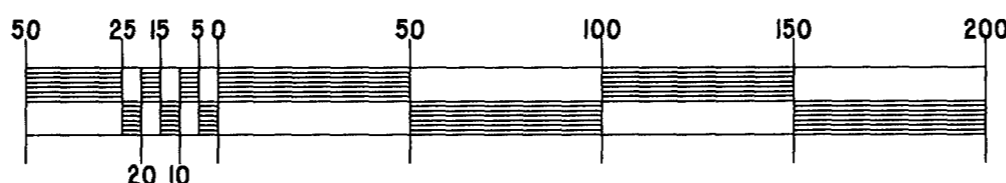
U.S. RTE. 60
RICHMOND ROAD

P.B. 69 - PG. 98

City of Williamsburg & County of James City
Circuit Court: This PLAT was recorded on
29 August 2003
at 3:25 AM/PM, P.B. 91 PG. 44-48
DOCUMENT # 031942
BETSY B. WOOLRIDGE, CLERK
Betsy B. Woolridge Clerk

EXHIBIT "A" CLAIBORNE (A CONDOMINIUM COMMUNITY) PHASE SEVENTEEN

GRAPHIC SCALE: 1" = 50'



Hassell & Folkes, P.C. Engineers Surveyors Planners Chesapeake, VA 23320 (757) 547-9531	SIZE C	CONTRACT NO.	FILE NAME S:\PLAT\CLAIMBORNE\PH-15-BLOG-22.DWG	REV.
SCALE: 1" = 50'		DATE: 08/18/03	SHEET 2 of 5	

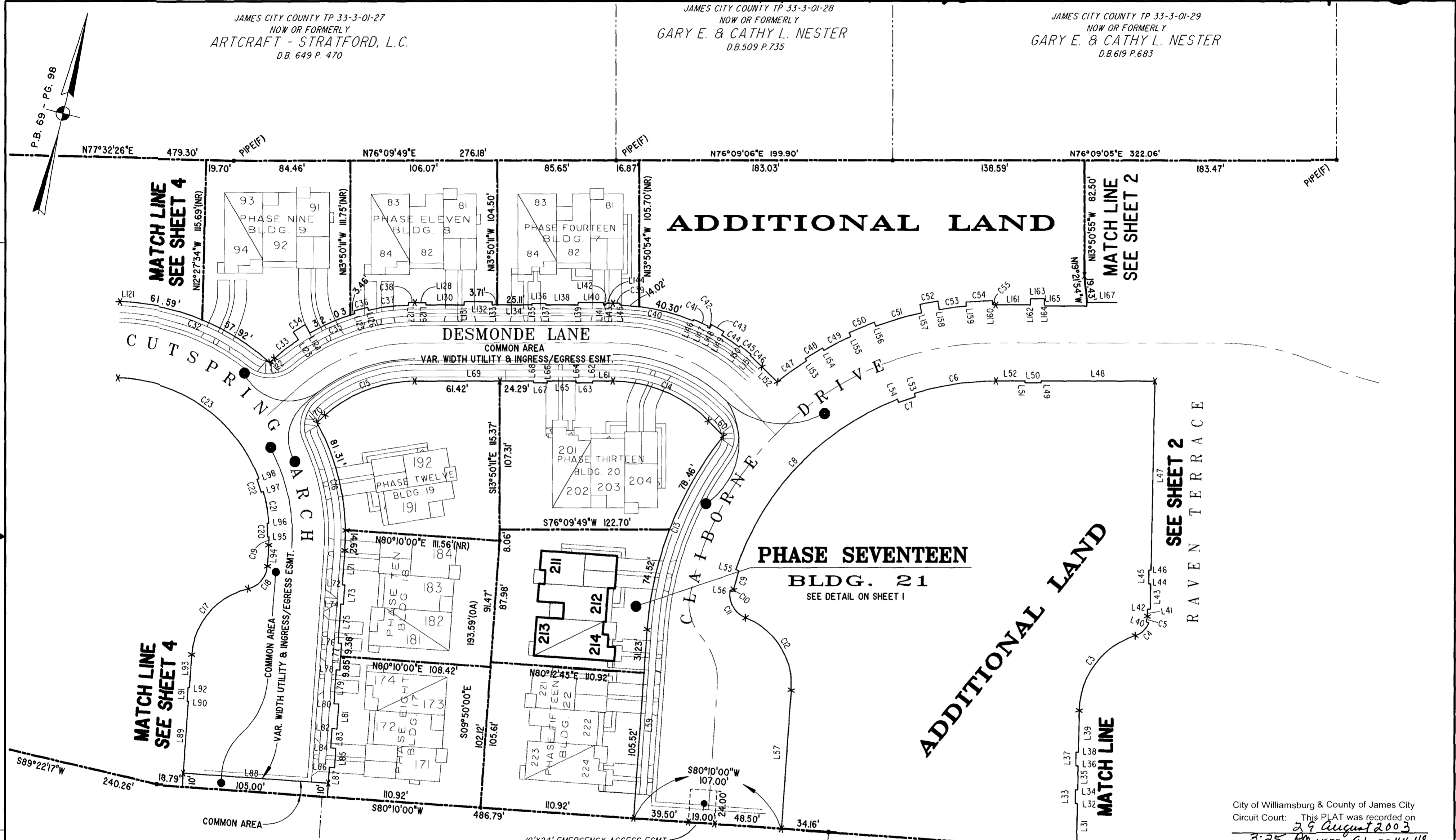
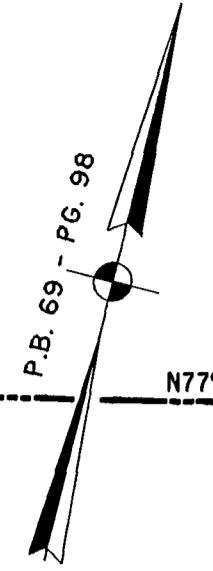
#031942

91 PAGE 46

JAMES CITY COUNTY TP 33-3-01-27
NOW OR FORMERLY
ARTCRAFT - STRATFORD, L.C.
D.B. 649 P. 470

JAMES CITY COUNTY TP 33-3-01-28
NOW OR FORMERLY
GARY E. & CATHY L. NESTER
D.B. 509 P. 735

JAMES CITY COUNTY TP 33-3-01-29
NOW OR FORMERLY
GARY E. & CATHY L. NESTER
D.B. 619 P. 683



ADDITIONAL LAND

ADDITIONAL LAND

PHASE SEVENTEEN
BLDG. 21
SEE DETAIL ON SHEET I

MATCH LINE
SEE SHEET 4

MATCH LINE
SEE SHEET 2

MATCH LINE
SEE SHEET 4

MATCH LINE

SEE SHEET 2

RAVEN TERRACE

TP 281-10-00-B
NOW OR FORMERLY
752 L.L.C.
INST. #980305

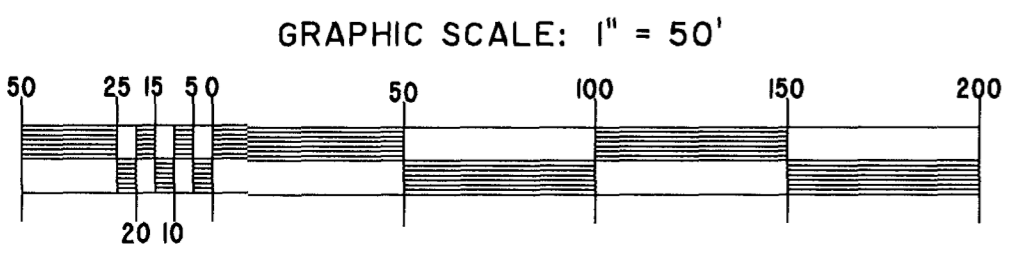
TP 282-08-00-001
NOW OR FORMERLY
752 L.L.C.
INST. #980305

TP 281-10-00-B
NOW OR FORMERLY
752 L.L.C.
INST. #980305

TP 282-08-00-001
NOW OR FORMERLY
752 L.L.C.
INST. #980305

City of Williamsburg & County of James City
Circuit Court: This PLAT was recorded on
at 3:25 PM on 29 August 2003
DOCUMENT # 031942
BETSY B. WOOLRIDGE, CLERK

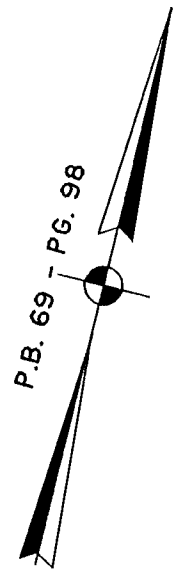
EXHIBIT "A"
CLAIBORNE
(A CONDOMINIUM COMMUNITY)
PHASE SEVENTEEN



Hassell & Folkes, P.C. Engineers Surveyors Planners Chesapeake, VA 23320 (757) 547-9531	SIZE C	CONTRACT NO.	FILE NAME S:\PLATS\CLAIBORNE\PH-15-BLDG-22.DWG	REV.
SCALE: 1" = 50'	DATE: 08/18/03	SHEET 3 of 5		

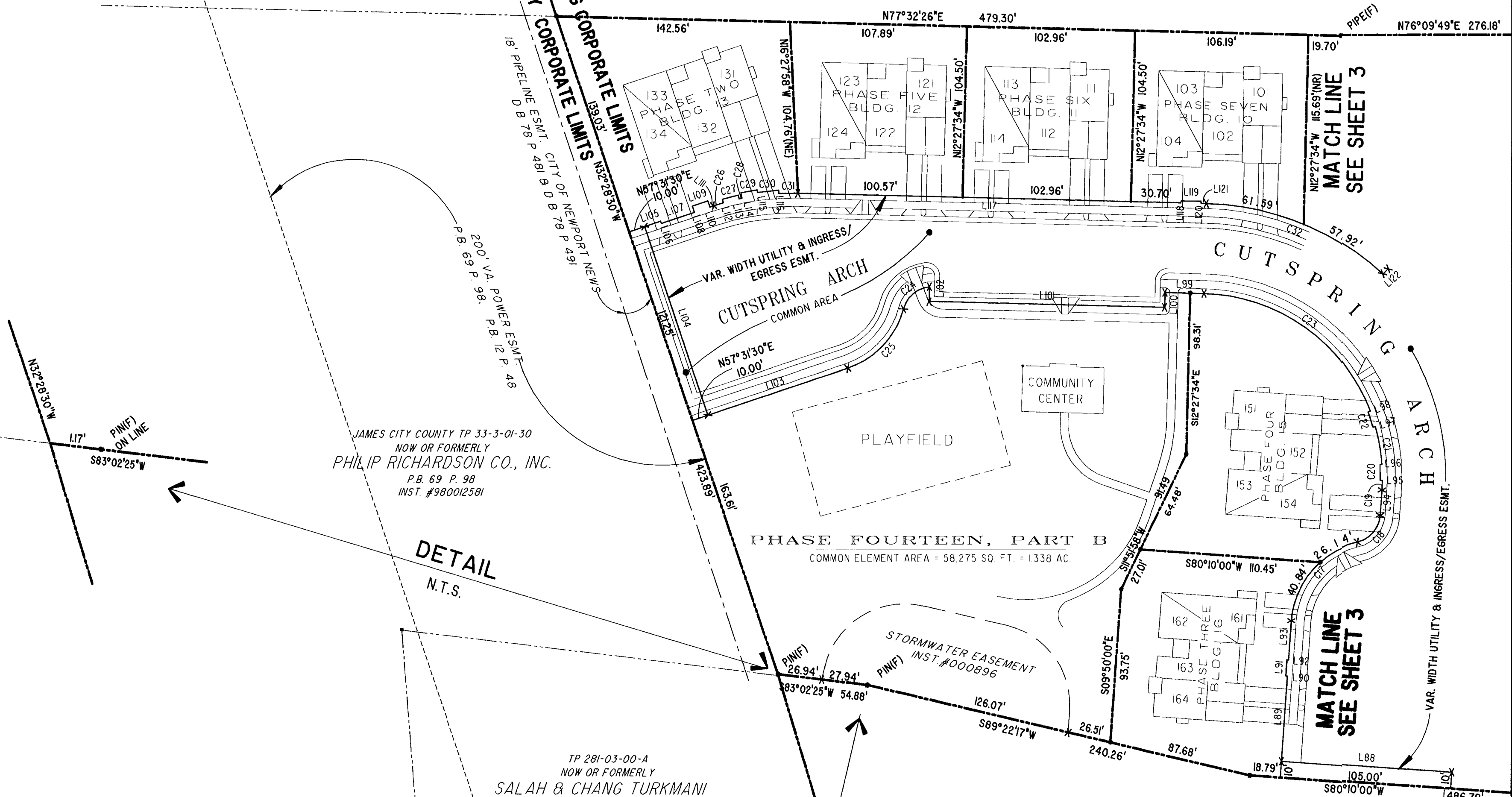
A-1520

A-1520



JAMES CITY COUNTY TP 33-3-01-27
NOW OR FORMERLY
ARTCRAFT - STRATFORD, L.C.
D.B. 649 P. 470

CITY OF WILLIAMSBURG CORPORATE LIMITS
JAMES CITY COUNTY CORPORATE LIMITS



JAMES CITY COUNTY TP 33-3-01-30
NOW OR FORMERLY
PHILIP RICHARDSON CO., INC.
P.B. 69 P. 98
INST. #980012581

TP 281-03-00-A
NOW OR FORMERLY
SALAH & CHANG TURKMANI
D.B. 94 P. 92

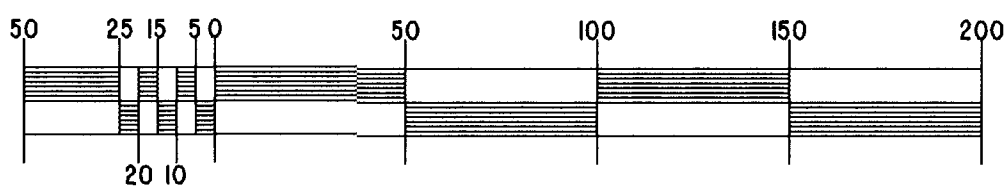
TP 281-10-00-B
NOW OR FORMERLY
752 L.L.C.
INST. #980305

TP 282-08-00-001
NOW OR FORMERLY
752 L.L.C.
INST. #980305

DETAIL
N.T.S.

DETAIL
N.T.S.

GRAPHIC SCALE: 1" = 50'



City of Williamsburg & County of James City
Circuit Court: This PLAT was recorded on
29 August 2003
at 3:25 AM/PM, P.B. 91 PG 44-48
DOCUMENT # 031942
BETSY B. WOOLRIDGE, CLERK
Betsy B. Woolridge Clerk

EXHIBIT "A"
CLAIBORNE
(A CONDOMINIUM COMMUNITY)
PHASE SEVENTEEN

CITY OF WILLIAMSBURG, VIRGINIA		SIZE	CONTRACT NO	FILE NAME	REV.
Hassell & Folkes, P.C. Engineers Surveyors Planners Chesapeake, VA. 23320 (757) 547-9531		C		S:\PLATS\CLAIBORNE\PH-15-81.DG-22.DWG	
SCALE: 1" = 50'		DATE: 08/18/03		SHEET 4 of 5	

LINE TABLE - UTILITY & INGRESS/EGRESS EASEMENT

CURVE TABLE - UTILITY & INGRESS/EGRESS EASEMENT

Table with columns: LINE, BEARING, DISTANCE. Rows L1 to L77.

Table with columns: LINE, BEARING, DISTANCE. Rows L78 to L154.

Table with columns: LINE, BEARING, DISTANCE. Rows LI55 to LI92.

Table with columns: CURVE, RADIUS, ARC LENGTH, DELTA ANGLE, TANGENT, CHORD BEARING, LENGTH. Rows C1 to C63.

City of Williamsburg & County of James City
Circuit Court: This PLAT was recorded on
29 August 2003
at 3:25 AM/PM, PB 91 PG 44-48
DOCUMENT # 031942
BETSY B. WOOLRIDGE, CLERK
Betsy B. Woolridge Clerk

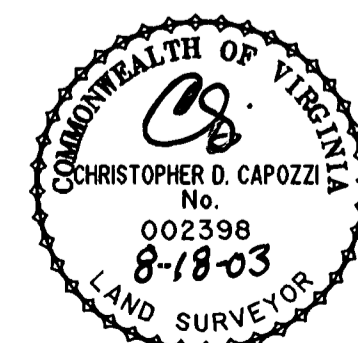


EXHIBIT "A"
CLAIBORNE
(A CONDOMINIUM COMMUNITY)
PHASE SEVENTEEN

Table with columns: CITY OF WILLIAMSBURG, VIRGINIA, Hassell & Folkes, P.C., SIZE, CONTRACT NO, FILE NAME, REV., SCALE: NONE, DATE: 08/18/03, SHEET 5 of 5.