

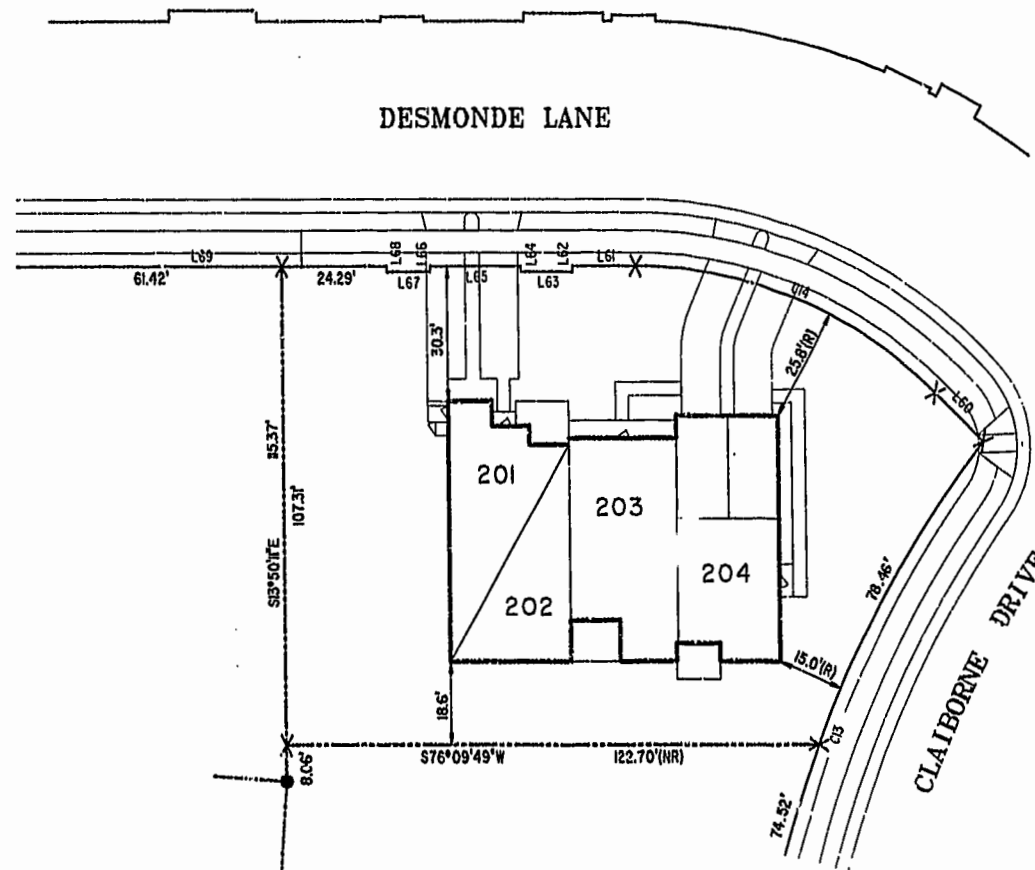
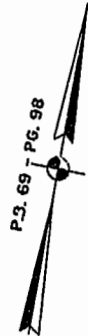
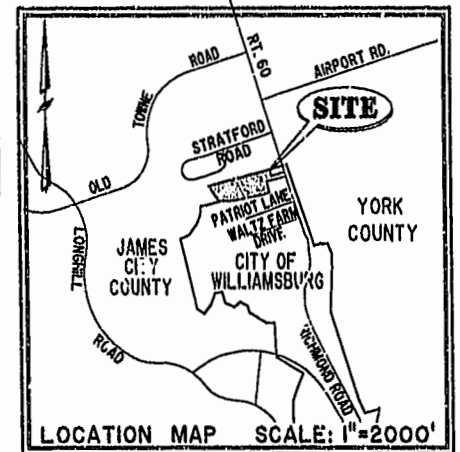
# 030578

89 PAGE 86

NOTES:

1. THE TOTAL AREA OF SITE IS 644,256 SQ.FT. (14.790 AC.) OF WHICH 299,700 SQ.FT. (6.860 AC.) IS ADDITIONAL LAND.
2. THE AREA OF THE SUBMITTED LAND IS 344,556 SQ.FT. (7.910 AC.)
3. THE COMMON AREA IS TO BE THE RESPONSIBILITY OF THE CONDOMINIUM ASSOCIATION AND HAS A TOTAL AREA OF 4.436 AC.

BUILDING NUMBER	UNIT NUMBER	UNIT TYPE	STREET ADDRESS
20	20-201	E3	201 DESMONDE LANE
20	20-202	A3	202 DESMONDE LANE
20	20-203	C	203 DESMONDE LANE
20	20-204	D	204 DESMONDE LANE



**PHASE THIRTEEN**

**BLDG. 20**

AREA = 14,848 SQ. FT. = 0.341 AC.

SCALE: 1" = 25'

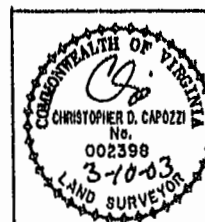
City of Williamsburg & County of James City  
 Circuit Court: This PLAT was recorded on  
18 March 2003  
 at 11:13 AM/PM, PB 89 PG 86-90  
 DOCUMENT # 030578  
 BETSY B. WOOLRIDGE, CLERK  
*Betsy Woolridge*, Dep. Clerk

I CHRISTOPHER D. CAPOZZI, A CERTIFIED LAND SURVEYOR, DO HEREBY CERTIFY THAT THIS PLAT IS ACCURATE, AND THAT IT COMPLIES WITH THE PROVISIONS OF SECTION 55 - 79.58A OF THE CODE OF VIRGINIA. I FURTHER HEREBY CERTIFY THAT ALL UNITS OR PORTIONS THEREOF DEPICTED HEREON HAVE BEEN SUBSTANTIALLY COMPLETED.

THE UNDERSIGNED CERTIFIED LAND SURVEYOR CERTIFIES THAT HE HAS READ SECTION 55 - 79.58B OF THE CODE OF VIRGINIA, AND FINDS THESE PLANS TO BE ACCURATE AND IN COMPLIANCE WITH THE CODE. I FURTHER CERTIFY THAT ALL UNITS OR PORTIONS THEREOF DEPICTED HEREON HAVE BEEN SUBSTANTIALLY COMPLETED.

3-10-03

DATE CHRISTOPHER D. CAPOZZI, VA L.S. No. 002398



**Hassell & Folkes, P.C.**  
 Engineers Surveyors Planners  
 325 Volvo Parkway  
 Chesapeake, VA 23320  
 (757)547-9531

DRAWN BY:	DATE
HJS	02/13/03
COMP BY:	DATE
HBA	10/01/02
CHECKED BY:	DATE
HBA	02/17/03

<b>EXHIBIT "A"</b>			
<b>CLAIBORNE</b>			
(A CONDOMINIUM COMMUNITY)			
<b>PHASE THIRTEEN</b>			
CITY OF WILLIAMSBURG,		VIRGINIA	
SIZE	CONTRACT NO	FILE NAME	REV.
C	98132	5\PLATS\CLANDORNE\PH-13-PLD0-2003	
SCALE: N/A		DATE: 02/13/03	SHEET 1 of 5

A-1520

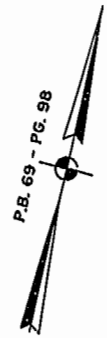
A-1520

#030578

89 PAGE 87

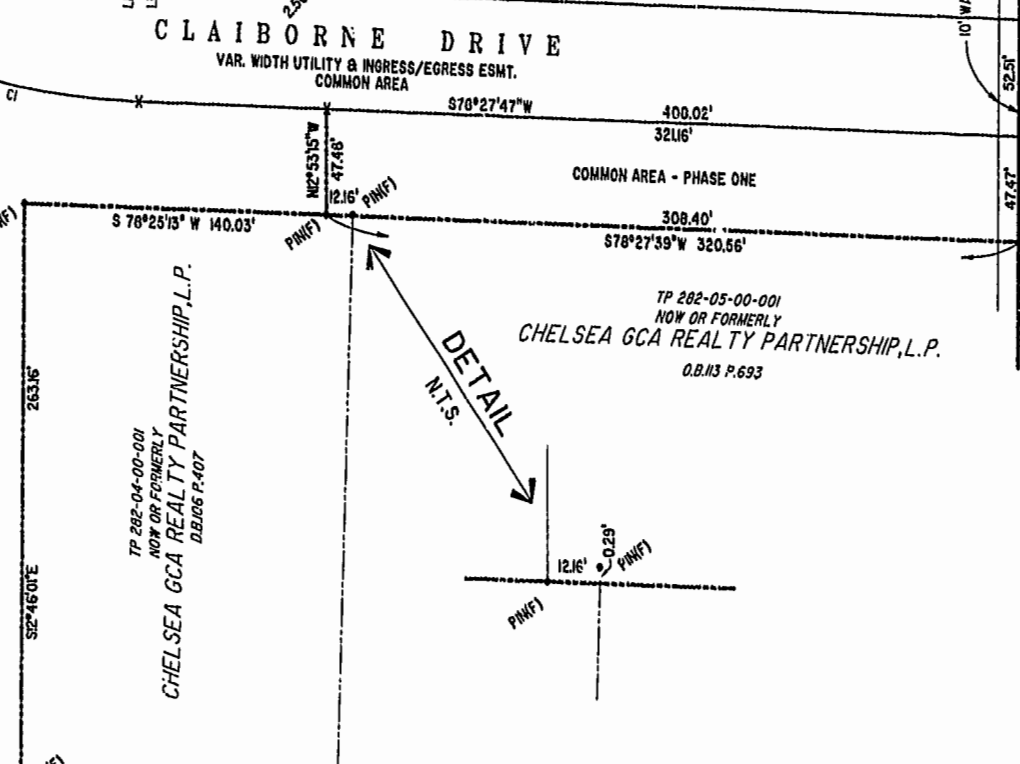
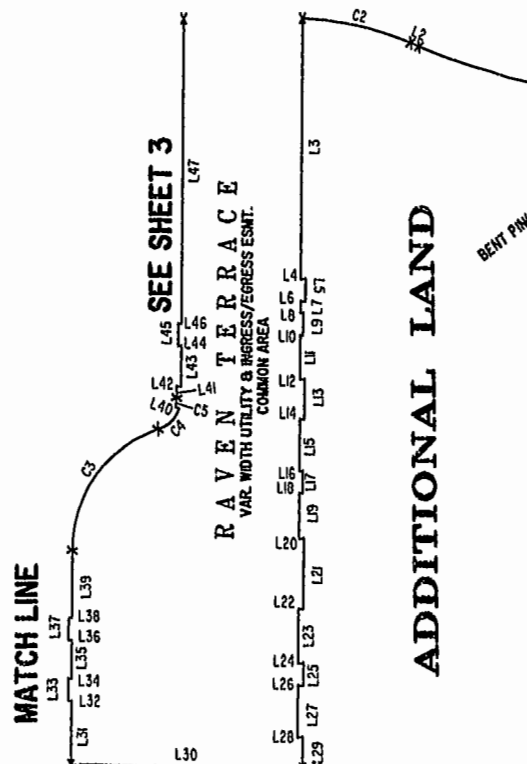
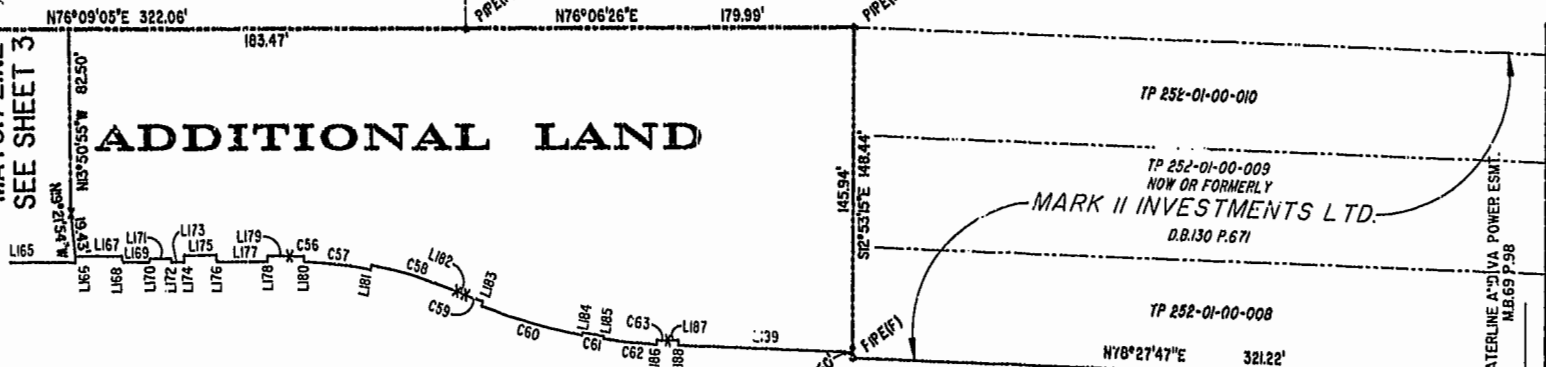
JAMES CITY COUNTY TP 33-3-01-29  
NOW OR FORMERLY  
GARY E. & CATHY L. NESTER  
D.B.619 P.683

JAMES CITY COUNTY TP 33-3-01-24  
NOW OR FORMERLY  
GOLDEN KNIGHTS, INC.  
D.B.568 P.316



MATCH LINE  
SEE SHEET 3

ADDITIONAL LAND



U.S. RTE. 60  
RICHMOND ROAD

P.B. 69 - PG. 98

TP 282-08-00-001  
NOW OR FORMERLY  
752 L.L.C.  
INST. #980305

TP 282-04-00-001  
NOW OR FORMERLY  
CHELSEA GCA REALTY PARTNERSHIP, L.P.  
D.B.106 P.407

TP 282-05-00-001  
NOW OR FORMERLY  
CHELSEA GCA REALTY PARTNERSHIP, L.P.  
D.B.113 P.693

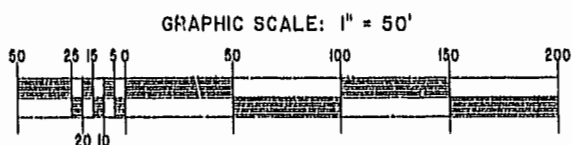
City of Williamsburg & County of James City  
Circuit Court: This PLAT was recorded on  
18 March 2003  
at 11:13 AM/PM, PG. 89 of 90  
DOCUMENT # 030578  
BETSY B. WOOLRIDGE, CLERK  
*Betsy Woolridge*, Dep. Clerk

EXHIBIT "A"  
CLAIBORNE  
(A CONDOMINIUM COMMUNITY)  
PHASE THIRTEEN

CITY OF WILLIAMSBURG, VIRGINIA

SIZE	CONTRACT NO	FILE NAME	REV.
C		S:\PLATS\CLL\CLBORNE\PH-13-BLDG-200A0	

SCALE: 1" = 50' DATE: 02/13/03 SHEET 2 of 5



A-1520

A-1520

# 030578

89 PAGE 88

JAMES CITY COUNTY TP 33-3-01-27  
NOW OR FORMERLY  
ARTCRAFT - STRATFORD, L.C.  
D.B. 649 P. 470

JAMES CITY COUNTY TP 33-3-01-28  
NOW OR FORMERLY  
GARY E. & CATHY L. NESTER  
D.B. 509 P. 735

JAMES CITY COUNTY TP 33-3-01-29  
NOW OR FORMERLY  
GARY E. & CATHY L. NESTER  
D.B. 619 P. 683

ADDITIONAL LAND

PHASE THIRTEEN  
BLDG. 20  
SEE DETAIL ON SHEET 1

ADDITIONAL LAND

ADDITIONAL LAND

MATCH LINE  
SEE SHEET 4

MATCH LINE  
SEE SHEET 2

MATCH LINE  
SEE SHEET 4

MATCH LINE

SEE SHEET 2  
RAVEN TERRACE

City of Williamsburg & County of James City  
Circuit Court: This PLAT was recorded on  
*18 March 2003*  
at *11:13* AM/PM, P.B. *89*, P.G. *88-90*  
DOCUMENT # *030578*  
BETSY B. WOOLRIDGE, CLERK  
*Betsy B. Woolridge* Temp. Clerk

TP 281-10-00-B  
NOW OR FORMERLY  
752 L.L.C.  
INST. #980305

TP 282-08-00-001  
NOW OR FORMERLY  
752 L.L.C.  
INST. #980305

TP 281-10-00-B  
NOW OR FORMERLY  
752 L.L.C.  
INST. #980305

TP 282-08-00-001  
NOW OR FORMERLY  
752 L.L.C.  
INST. #980305

GRAPHIC SCALE: 1" = 50'

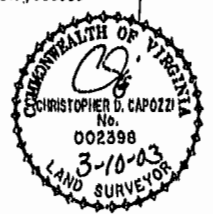
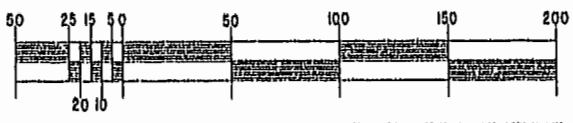


EXHIBIT "A"  
CLAIBORNE  
(A CONDOMINIUM COMMUNITY)  
PHASE THIRTEEN

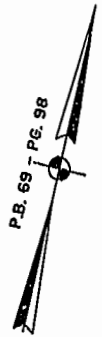
Hassell & Folkes, P.C. Engineers Surveyors Planners Chesapeake, VA 23320 (757) 547-9551		SIZE C	CONTRACT NO.	FILE NAME S:\PLATS\CL\CLANDORNE\PH-13-03-020.DWG	REV.
SCALE: 1" = 50'		DATE: 02/13/03	SHEET 3 of 5		

A-1520

A-1520

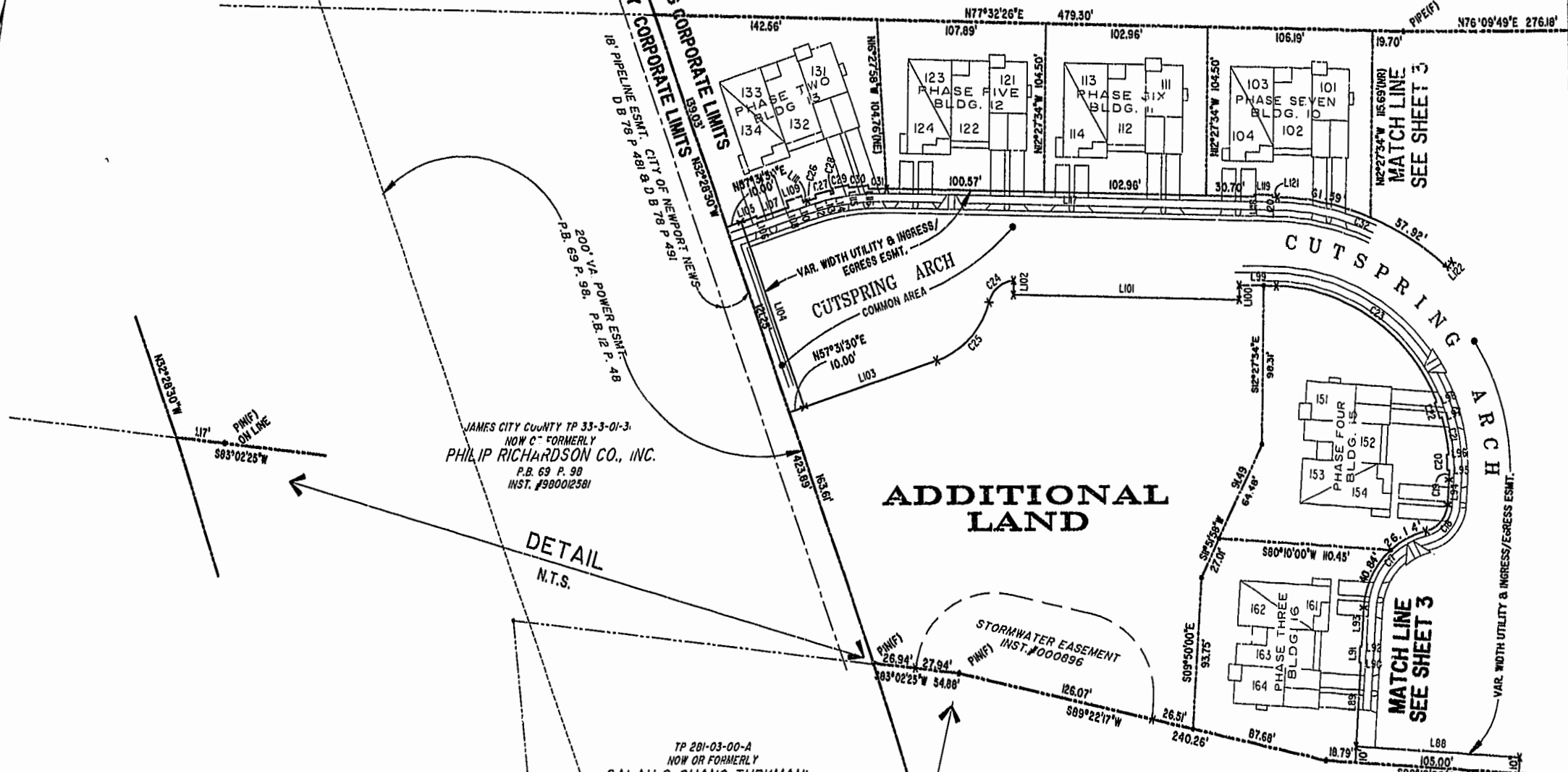
#030578

89 PAGE 89



JAMES CITY COUNTY TP 33-3-01-27  
NOW OR FORMERLY  
ARTCRAFT - STRATFORD, L.C.  
D.B.649 P.470

CITY OF WILLIAMSBURG CORPORATE LIMITS  
JAMES CITY COUNTY CORPORATE LIMITS



JAMES CITY COUNTY TP 33-3-01-3  
NOW OR FORMERLY  
PHILIP RICHARDSON CO., INC.  
P.B. 69 P. 98  
INST. #980012581

TP 281-03-00-A  
NOW OR FORMERLY  
SALAH & CHANG TURKMAN  
D.B. 94 P. 92

TP 281-10-00-B  
NOW OR FORMERLY  
752 L.L.C.  
INST. #980305

TP 282-08-00-001  
NOW OR FORMERLY  
752 L.L.C.  
INST. #980305

City of Williamsburg & County of James City  
Circuit Court: This PLAT was recorded on  
19 March 2003  
at 11:13 AM/PM, P.B. 89 PAGES 92  
DOCUMENT # 030578  
BETSY B. WOOLRIDGE, CLERK  
*Betsy Woolridge* Dep. Clerk

GRAPHIC SCALE: 1" = 50'

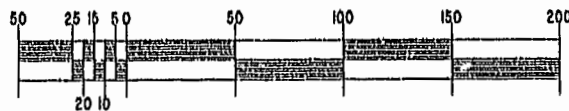


EXHIBIT "A"  
CLAIBORNE  
(A CONDOMINIUM COMMUNITY)  
PHASE THIRTEEN

CITY OF WILLIAMSBURG, VIRGINIA

Hassell & Folkes, P.C. Engineers & Surveyors Chesapeake, VA 23320 (757) 547-9531	SIZE	CONTRACT NO.	FILE NAME	REV.
	C		S:\PLATS\CLAIORNE\PH13-BLDG-20000	
SCALE: 1" = 50'		DATE: 02/13/03	SHEET 4 of 5	

A-1520

A-1520

#030578

89 PAGE 90

LINE TABLE - UTILITY & INGRESS/EGRESS EASEMENT

CURVE TABLE - UTILITY & INGRESS/EGRESS EASEMENT

Table with columns: LINE, BEARING, DISTANCE. Rows L1 to L77.

Table with columns: LINE, BEARING, DISTANCE. Rows L78 to L154.

Table with columns: LINE, BEARING, DISTANCE. Rows L155 to L192.

Table with columns: CURVE, RADIUS, ARC LENGTH, DELTA ANGLE, TANGENT, CHORD BEARING, LENGTH. Rows C1 to C63.

City of Williamsburg & County of James City Circuit Court: This PLAT was recorded on 18 Mar 2003 at 11:13 AM, Vol. PB 89, Page 90. DOCUMENT # 030578. Betsy B. Woolridge, Clerk.

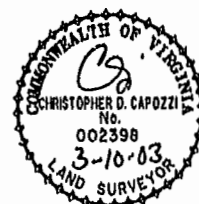


EXHIBIT "A" CLAIBORNE (A CONDOMINIUM COMMUNITY) PHASE THIRTEEN

CITY OF WILLIAMSBURG, VIRGINIA. Hassell & Folkes, P.C. ENGINEERS SURVEYORS PLANNERS. CONTRACT NO. C, FILE NAME: S:\PLAT\CLABORNE\PH13-000-200.DWG, REV. SHEET 5 of 5.