

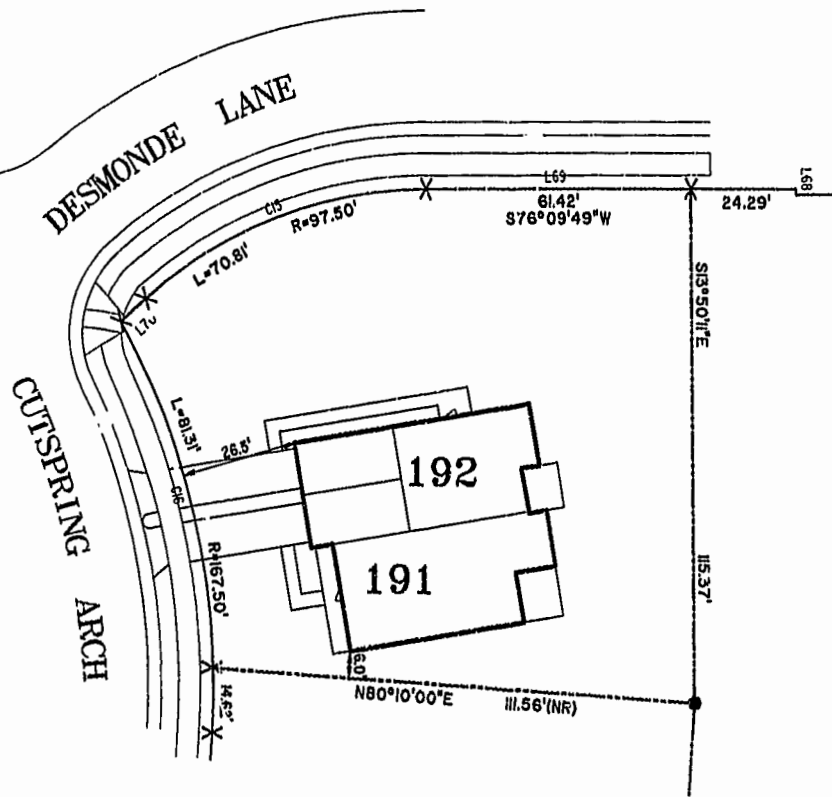
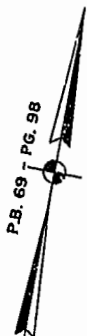
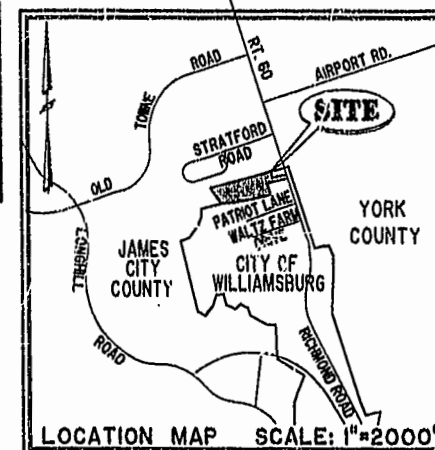
#030544

89 PAGE 81

NOTES:

1. THE TOTAL AREA OF SITE IS 644,256 SQ.FT. (14.790 AC.) OF WHICH 314,548 SQ.FT. (7.221 AC.) IS ADDITIONAL LAND.
2. THE AREA OF THE SUBMITTED LAND IS 329,708 SQ.FT. (7.569 AC.)
3. THE COMMON AREA IS TO BE THE RESPONSIBILITY OF THE CONDOMINIUM ASSOCIATION AND HAS A TOTAL AREA OF 4.436 AC.

BUILDING NUMBER	UNIT NUMBER	UNIT TYPE	STREET ADDRESS
19	19-191	C	191 CUTSPRING ARCH
19	19-192	D	192 CUTSPRING ARCH



PHASE TWELVE

BLDG. 19

AREA = 12,904 SQ. FT. = 0.296 AC.

SCALE: 1" = 25'

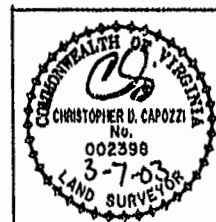
City of Williamsburg & County of James City
 Circuit Court: This PLAT was recorded on
MARCH 12, 2003
 at 1:32 PM P.B. 89 PG 81/85
 DOCUMENT # 030544
 BETSY B. WOOLRIDGE, CLERK
Betsy B. Woolridge Clerk

I CHRISTOPHER D. CAPOZZI, A CERTIFIED LAND SURVEYOR, DO HEREBY CERTIFY THAT THIS PLAT IS ACCURATE, AND THAT IT COMPLIES WITH THE PROVISIONS OF SECTION 55 - 79.58A OF THE CODE OF VIRGINIA. I FURTHER HEREBY CERTIFY THAT ALL UNITS OR PORTIONS THEREOF DEPICTED HEREON HAVE BEEN SUBSTANTIALLY COMPLETED.

THE UNDERSIGNED CERTIFIED LAND SURVEYOR CERTIFIES THAT HE HAS READ SECTION 55 - 79.58B OF THE CODE OF VIRGINIA, AND FINDS THESE PLANS TO BE ACCURATE AND IN COMPLIANCE WITH THE CODE. I FURTHER CERTIFY THAT ALL UNITS OR PORTIONS THEREOF DEPICTED HEREON HAVE BEEN SUBSTANTIALLY COMPLETED.

3-7-07
 DATE

CS
 CHRISTOPHER D. CAPOZZI, VA L.S. No. 002398



Hassell & Folkes, P.C.
 Engineers Surveyors Planners
 325 Valley Parkway
 Chesapeake, VA 23310
 (757) 547-9531

DRAWN BY:	DATE
HJS	02/13/03
COMP BY:	DATE
HBA	10/01/02
CHECKED BY:	DATE
HBA	02/17/03

EXHIBIT "A"			
CLAIBORNE			
(A CONDOMINIUM COMMUNITY)			
PHASE TWELVE			
CITY OF WILLIAMSBURG,		VIRGINIA	
SIZE	CONTRACT NO	FILE NAME	REV.
C	98132	S:\PLATS\CLANBORNE\PH-12-BLDG-19.DWG	
SCALE: N/A		DATE: 02/13/03	SHEET 1 of 5

A-1520

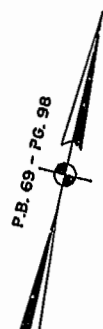
A-1520

030544

89 PAGE 82

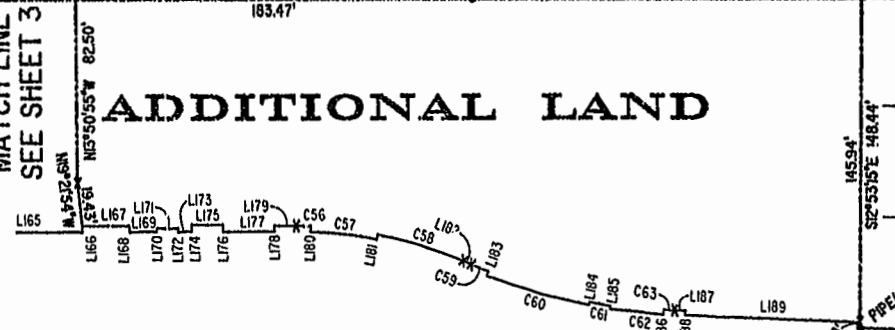
JAMES CITY COUNTY TP 33-3-01-29
NOW OR FORMERLY
GARY E. & CATHY L. NESTER
D.B.619 P.683

JAMES CITY COUNTY TP 33-3-01-24
NOW OR FORMERLY
GOLDEN KNIGHTS, INC.
D.B.568 P.316



MATCH LINE
SEE SHEET 3

ADDITIONAL LAND

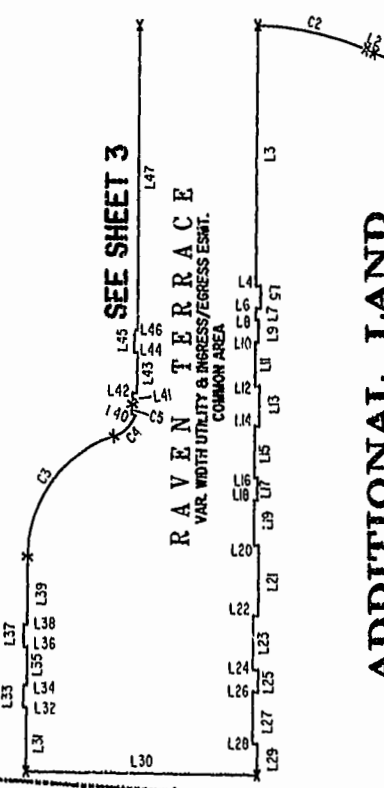


MATCH LINE

SEE SHEET 3

RAVEN TERRACE
VAR. WIDTH UTILITY & INGRESS/EGRESS ESMT.
COMMON AREA

ADDITIONAL LAND

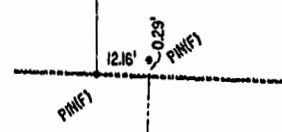


CLAIBORNE DRIVE
VAR. WIDTH UTILITY & INGRESS/EGRESS ESMT.
COMMON AREA

CHELSEA GCA REALTY PARTNERSHIP, L.P.
TP 282-04-00-001
NOW OR FORMERLY
D.B.106 P.407

CHELSEA GCA REALTY PARTNERSHIP, L.P.
TP 282-05-00-001
NOW OR FORMERLY
D.B.113 P.693

DETAIL
N.T.S.



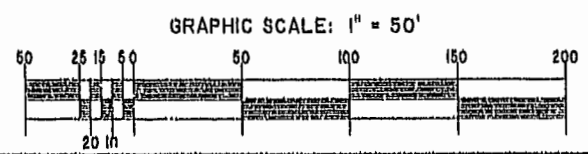
U.S. RTE. 60
RICHMOND ROAD

P.B. 69 - PG. 98

City of Williamsburg & County of James City
Circuit Court: This PLAT was recorded on
MARCH 12, 2003
at 1:32 AM P.M. PB 89 PG 81-85
DOCUMENT # 030544
BETSY B. WOOLRIDGE, CLERK
Betsy B. Woolridge Clerk

EXHIBIT "A"
CLAIBORNE
(A CONDOMINIUM COMMUNITY)
PHASE TWELVE

CITY OF WILLIAMSBURG, VIRGINIA



Hassel & Folkes, P.C. Engineers Surveyors Planners Chesapeake, VA 23320 (757) 547-9531	SIZE C	CONTRACT NO 002398	FILE NAME S:\PLATS\CLAIORNE\PH-12-8L02-19.DWG	REV.
SCALE: 1" = 50'		DATE: 02/13/03	SHEET 2 of 5	

A-1520

A-1520

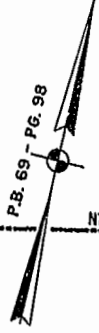
030544

89 PAGE 83

JAMES CITY COUNTY TP 33-3-01-27
NOW OR FORMERLY
ARTCRAFT - STRATFORD, L.C.
D.B. 649 P. 470

JAMES CITY COUNTY TP 33-3-01-28
NOW OR FORMERLY
GARY E. & CATHY L. NESTER
D.B. 509 P. 735

JAMES CITY COUNTY TP 33-3-01-23
NOW OR FORMERLY
GARY E. & CATHY L. NESTER
D.B. 619 P. 683

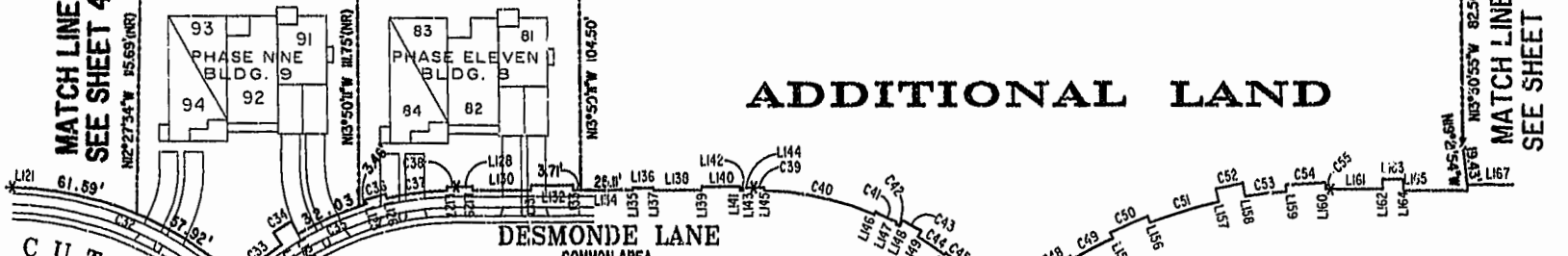


N77°32'26"E 479.30' N76°09'49"E 276.18' N76°09'00"E 189.90' N76°09'05"E 322.06'

MATCH LINE
SEE SHEET 4

MATCH LINE
SEE SHEET 2

ADDITIONAL LAND



DESMONDE LANE
COMMON AREA

PHASE
TWELVE
BLDG. 19
SEE DETAIL ON SHEET 1

ADDITIONAL LAND

ADDITIONAL LAND

SEE SHEET 2
RAVEN TERRACE

MATCH LINE
SEE SHEET 4

MATCH LINE

City of Williamsburg & County of James City
Circuit Court: This PLAT was recorded on
MARCH 12, 2003
at 1:32 PM P.B. 89 PG. 81-85
DOCUMENT # 030544
BETSY B. WOOLRIDGE, CLERK
Betsy B. Woolridge Clerk

TP 281-10-00-B
NOW OR FORMERLY
752 L.L.C.
INST. #980305

TP 282-08-00-001
NOW OR FORMERLY
752 L.L.C.
INST. #980305

TP 281-10-00-B
NOW OR FORMERLY
752 L.L.C.
INST. #980305

TP 282-08-00-001
NOW OR FORMERLY
752 L.L.C.
INST. #980305

GRAPHIC SCALE: 1" = 50'



EXHIBIT "A"
CLAIBORNE
(A CONDOMINIUM COMMUNITY)
PHASE TWELVE

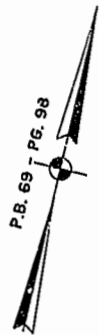
Hassell & Polkes, P.C. Engineers Surveyors Planners Chesapeake, VA 23320 (757) 547-9531		SIZE C	CONTRACT NO 752 L.L.C.	FILE NAME S:\PLATS\CLAIBORNE\PH12-BLDG-19.DWG	REV.
SCALE: 1" = 50'		DATE: 02/13/03	SHEET 3 of 5		

A-1520

A-1520

030544

89 page 84



JAMES CITY COUNTY TP 33-3-01-27
NOW OR FORMERLY
ARTCRAFT - STRATFORD, L.C.
D.B.649 P.470

CITY OF WILLIAMSBURG CORPORATE LIMITS
JAMES CITY COUNTY CORPORATE LIMITS

133 PHASE TWO BLDG.
134
132
131

123 PHASE FIVE BLDG.
124
122
121
120

113 PHASE SIX BLDG.
114
112
111

103 PHASE SEVEN BLDG.
104
102
101

151 PHASE FOUR BLDG.
152
154
153

162 PHASE THREE BLDG.
163
164
161

JAMES CITY COUNTY TP 33-3-01-30
NOW OR FORMERLY
PHILIP RICHARDSON CO., INC.
P.B. 69 P. 98
INST. #980312581

TP 281-03-03-A
NOW OR FORMERLY
SALAH & CHANG TURKMANI
D.B. 94 P. 92

TP 281-10-00-5
NOW OR FORMERLY
752 L.L.C.
INST. #980305

TP 282-09-00-001
NOW OR FORMERLY
752 L.L.C.
INST. #980305

ADDITIONAL LAND

DETAIL
N.T.S.

DETAIL
N.T.S.

City of Williamsburg & County of James City
Circuit Court: This PLAT was recorded on
MARCH 12, 2003
at 1:32 AM P.B. 89 PG. 85
DOCUMENT # 030544
BETSY B. WOOLRIDGE, CLERK
Betsy B. Woolridge Clerk

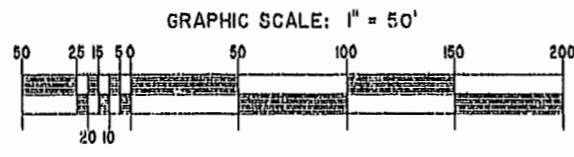


EXHIBIT "A"
CLAIBORNE
(A CONDOMINIUM COMMUNITY)
PHASE TWELVE
CITY OF WILLIAMSBURG, VIRGINIA

Hassell & Polkes, P.C. Engineers Surveyors Planners Chesapeake, VA. 23320 (757) 547-9531	SCALE: 1" = 50'	DATE: 02/13/03	FILE NAME S:\PLATS\CLAIBORNE\11-12-BLDG-12.DWG	REV.
---	-----------------	----------------	---	------

A-1520

A-1520

#030544

89 PAGE 85

LINE TABLE - UTILITY & INGRESS/EGRESS EASEMENT

CURVE TABLE - UTILITY & INGRESS/EGRESS EASEMENT

Table with columns: LINE, BEARING, DISTANCE. Contains 177 rows of utility and easement data.

Table with columns: LINE, BEARING, DISTANCE. Contains 177 rows of utility and easement data.

Table with columns: LINE, BEARING, DISTANCE. Contains 177 rows of utility and easement data.

Table with columns: CURVE, RADIUS, ARC LENGTH, DELTA ANGLE, TANGENT, CHORD BEARING, LENGTH. Contains 63 rows of curve data.

City of Williamsburg & County of James City Circuit Court. This PLAT was recorded on March 12, 2003 at 1:32 AM (PM) PB 89 PG 81/85 DOCUMENT # 030544 Betsy B. Woolridge, Clerk

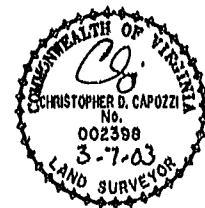


EXHIBIT "A" CLAIBORNE (A CONDOMINIUM COMMUNITY) PHASE TWELVE

Table with columns: CONTRACT NO., FILE NAME, REV., DATE: 02/13/03, SHEET 8 of 8.