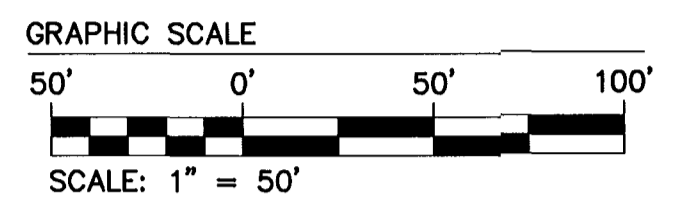
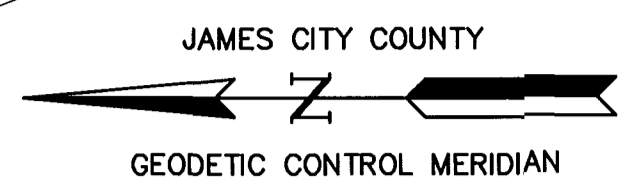
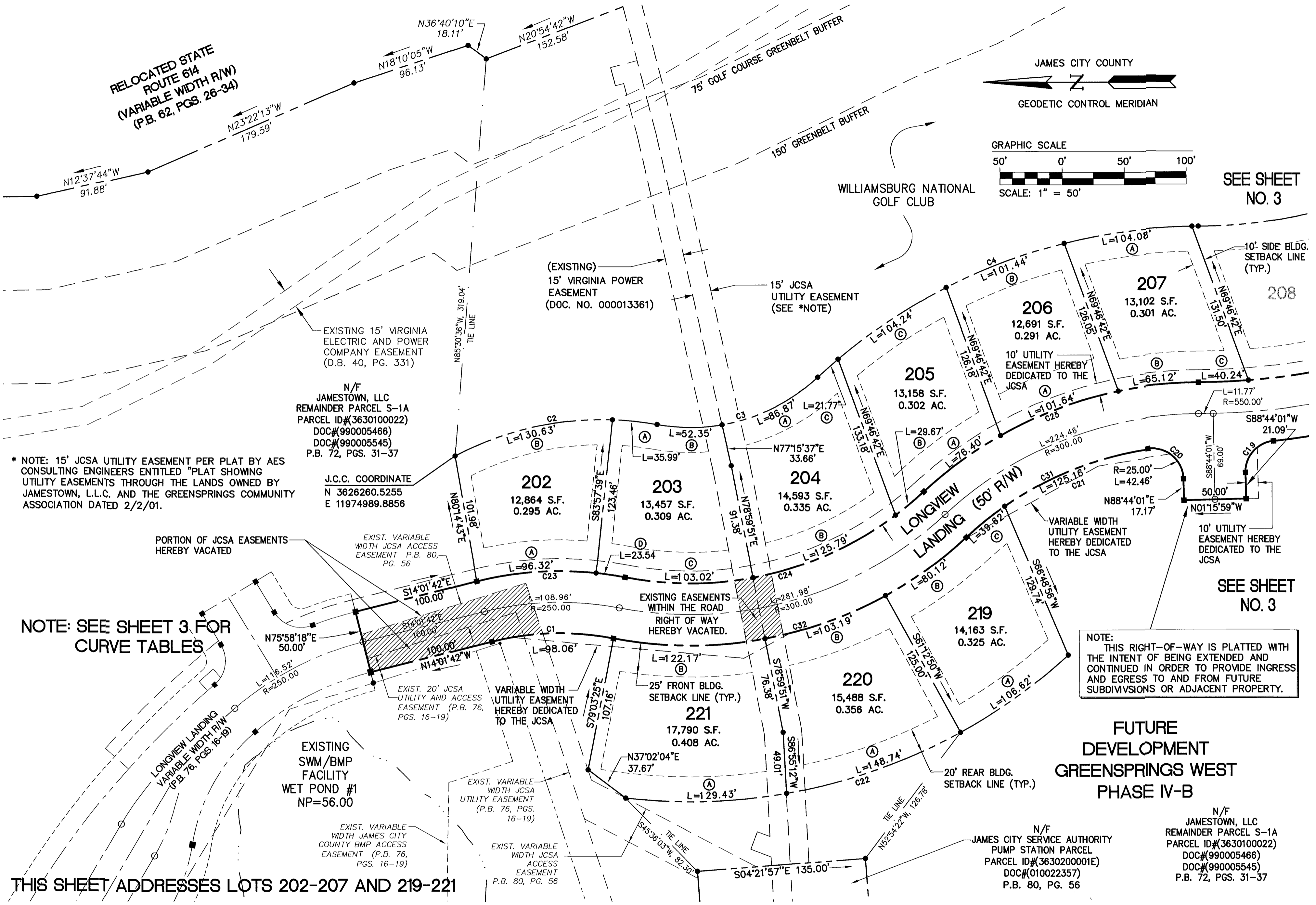


# 030034821

RELOCATED STATE ROUTE 614  
(VARIABLE WIDTH R/W)  
(P.B. 62, PGS. 26-34)



SEE SHEET NO. 3



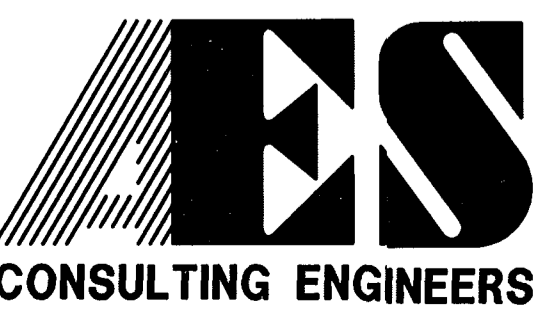
\* NOTE: 15' JCSA UTILITY EASEMENT PER PLAT BY AES CONSULTING ENGINEERS ENTITLED "PLAT SHOWING UTILITY EASEMENTS THROUGH THE LANDS OWNED BY JAMESTOWN, L.L.C. AND THE GREENSPRINGS COMMUNITY ASSOCIATION DATED 2/2/01.

NOTE: SEE SHEET 3 FOR CURVE TABLES

NOTE: THIS RIGHT-OF-WAY IS PLATTED WITH THE INTENT OF BEING EXTENDED AND CONTINUED IN ORDER TO PROVIDE INGRESS AND EGRESS TO AND FROM FUTURE SUBDIVISIONS OR ADJACENT PROPERTY.

FUTURE DEVELOPMENT  
GREENSPRINGS WEST  
PHASE IV-B

THIS SHEET ADDRESSES LOTS 202-207 AND 219-221



5248 Olde Towne Road, Suite 1  
Williamsburg, Virginia 23188  
(757) 253-0040  
Fax (757) 220-8994

PLAT OF SUBDIVISION  
GREENSPRINGS WEST  
PHASE IV-A  
LOTS 202-221  
BEING THE PROPERTY OF JAMESTOWN, L.L.C.  
BERKELEY DISTRICT JAMES CITY COUNTY VIRGINIA



City of Williamsburg & County of James City Circuit Court: This PLAT was recorded on		November 1, 2003	
at 2:15 AM/PM. PG. _____		DOCUMENT# 030034821	
BETSY B. WOOLRIDGE, CLERK		Betsy B. Woolridge Clerk	
No.	DATE	REVISION / COMMENT / NOTE	BY
1	6/30/03	REVISED PER COUNTY COMMENTS	JFS

Designed BY OTHERS	Drawn JFS
Scale 1"=50'	Date 1/20/03
Project No. 8656-6B	
Drawing No. 2 OF 3	