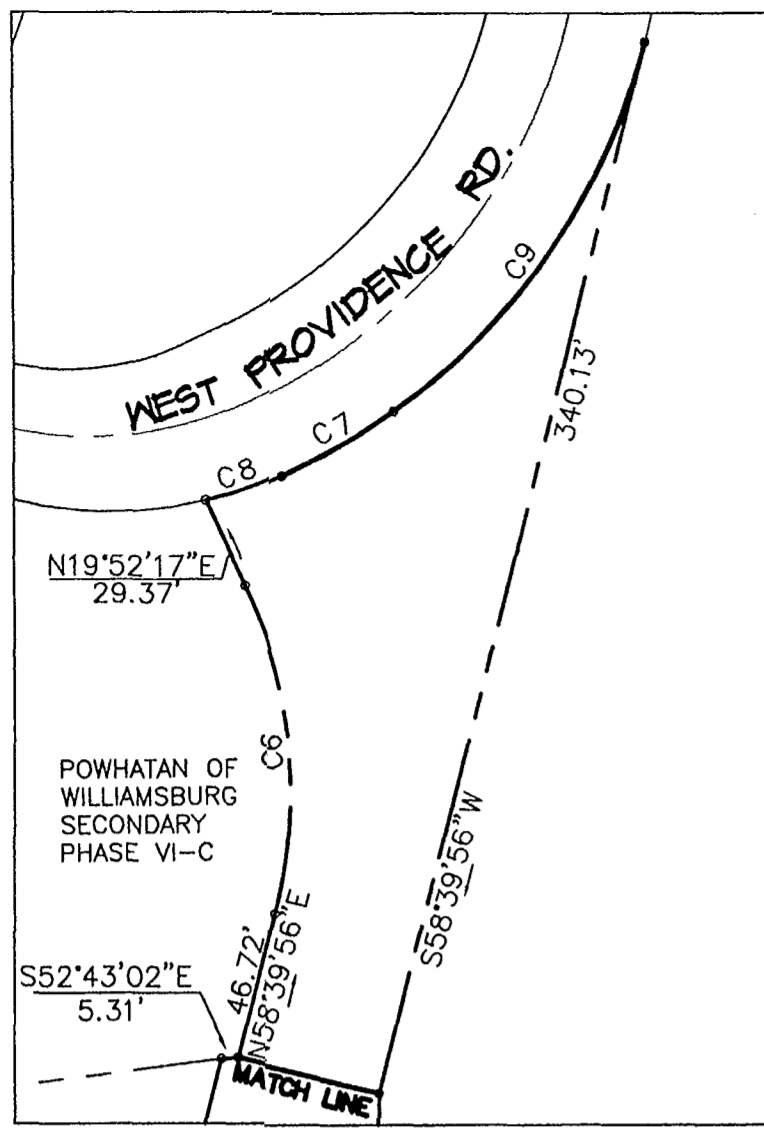
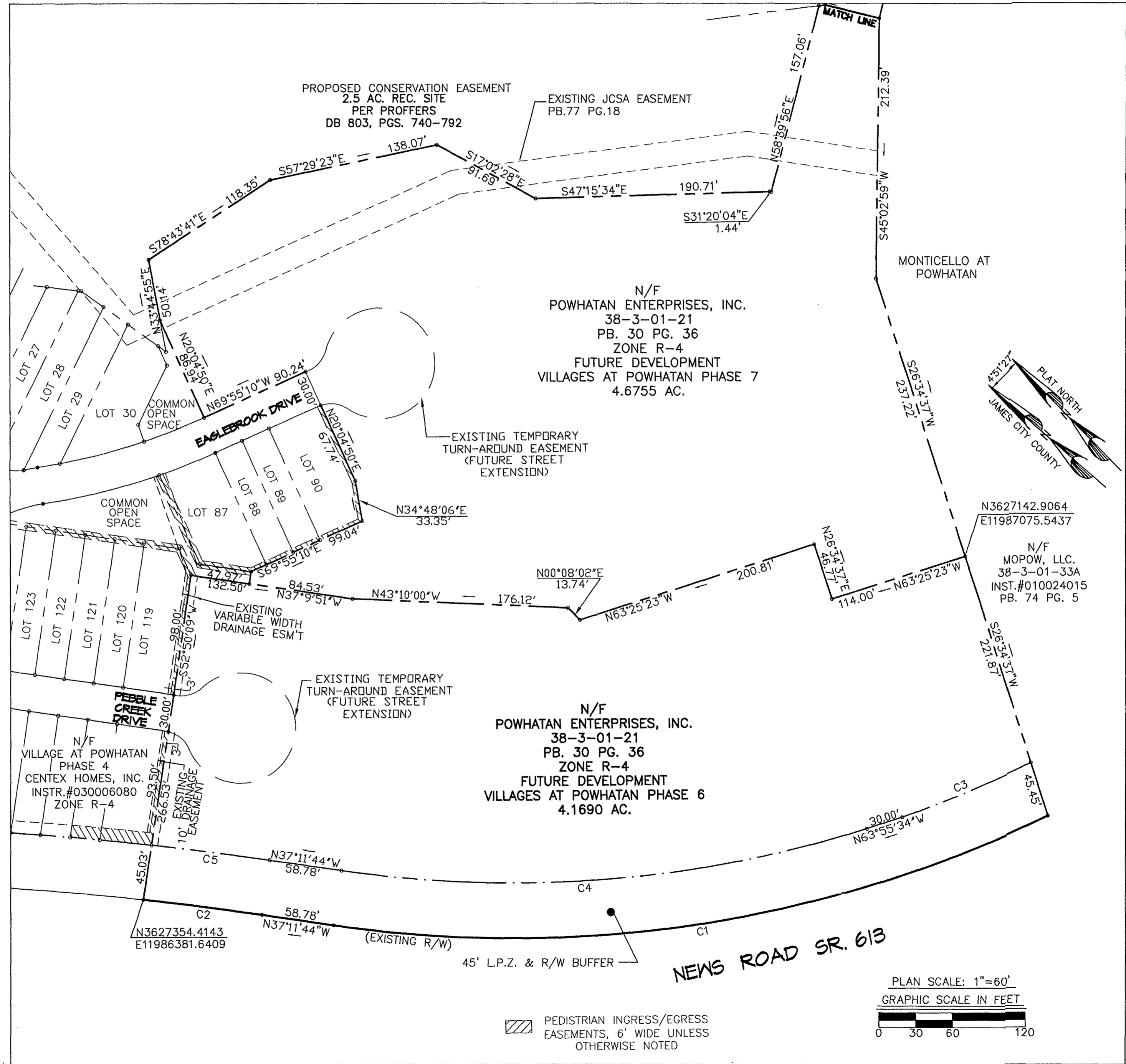


#030032761

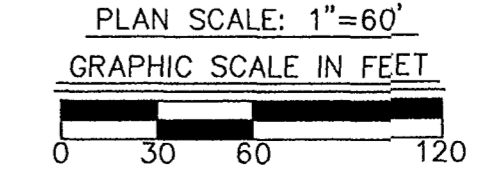


CURVE TABLE						
CURVE	LENGTH	RADIUS	TANGENT	CHDRD DIRECTION	CHORD	DELTA
C1	598.71'	1006.74'	308.50'	S54°13'57"E	589.93'	34°04'26"
C2	97.06'	2700.19'	48.54'	N38°13'32"W	97.06'	2°03'35"
C3	114.47'	961.74'	57.30'	S68°13'46"E	114.40'	6°49'10"
C4	433.68'	961.74'	220.59'	S50°06'50"E	430.02'	25°50'12"
C5	137.68'	2745.19'	48.52'	N38°12'30"W	137.24'	2°01'31"
C6	104.95'	155.00'	54.58'	N39°16'07"E	102.96'	38°47'39"
C7	40.12'	205.00'	20.13'	S75°44'09"E	40.06'	11°12'52"
C8	25.16'	127.66'	12.62'	S64°28'58"E	25.12'	11°17'30"
C9	143.09'	205.00'	74.60'	N78°39'41"E	140.20'	39°59'29"



City of Williamsburg & County of James City
Circuit Court: This PLAT was recorded on
22 October 2003
at 2:42 AM/PM, PB PG.
DOCUMENT # 030032761
BETSY B. WOOLRIDGE, CLERK
Betsy B. Woolridge Clerk

PEDESTRIAN INGRESS/EGRESS
EASEMENTS, 6' WIDE UNLESS
OTHERWISE NOTED



4029 Ironbound Road
Suite 100
Williamsburg, VA 23188
Tel. (757) 253-2975
Fax (757) 228-0049
Email: lmdg@landmarkdg.com

5544 Greenwch Road
Suite 200
Virginia Beach, VA 23462
Tel. (757) 473-2000
Fax (757) 497-7933
Email: lmdg@landmarkdg.com



SUBDIVISION OF
A PORTION OF
POWHATAN OF WILLIAMSBURG SECONDARY
FOR CONVEYANCE TO
CENTEX HOMES, INC.
JAMES CITY COUNTY
VIRGINIA

Checked: SAR	Date: 9/25/03
Drawn: LFV	Scale: 1"=60'
Project Number: 1780041	CADD File name: PV6&7ALL
Drawing Number: 2 of 2	Dwg. File No.: 14646W