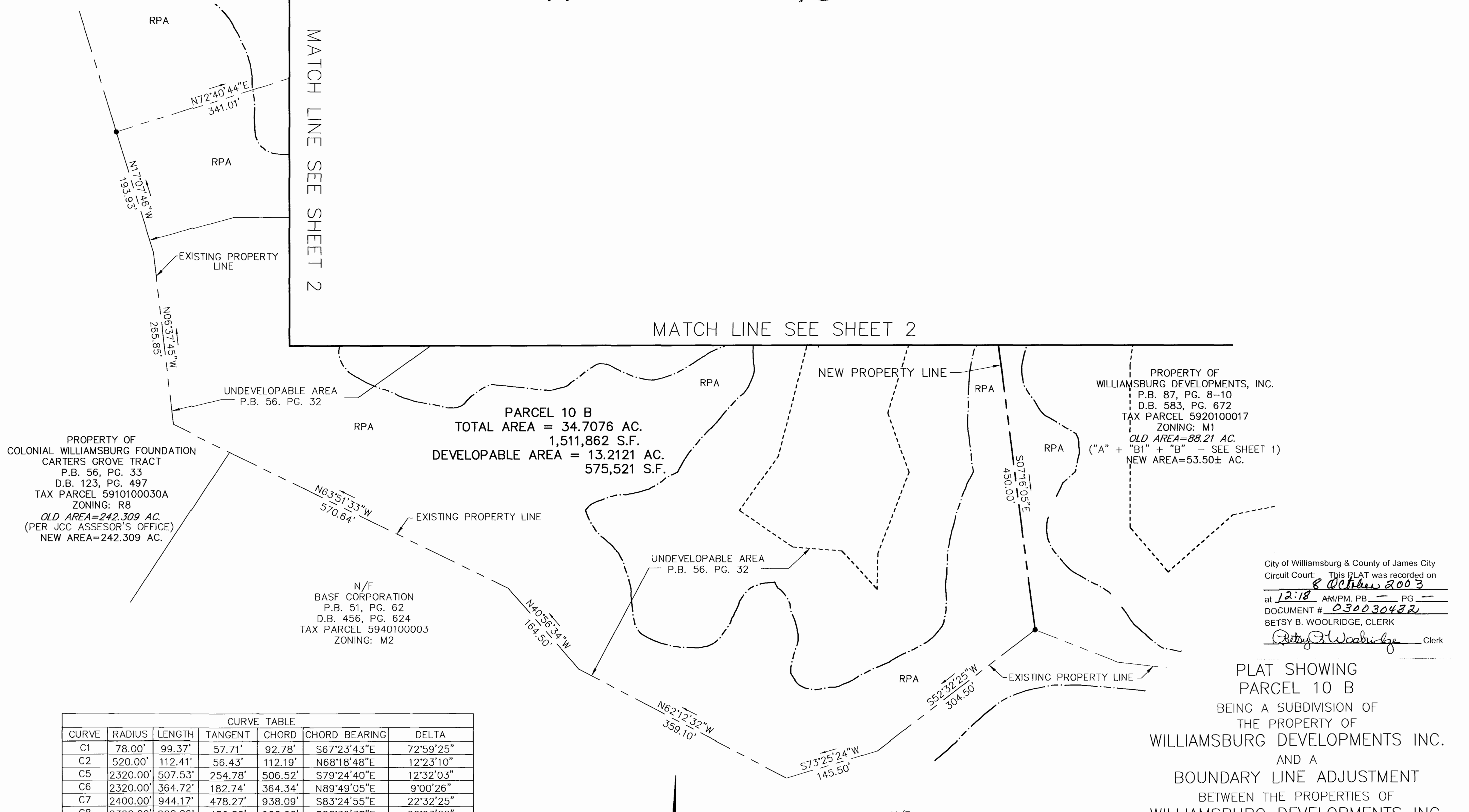


#030030432

MATCH LINE SEE SHEET 2

MATCH LINE SEE SHEET 2



PROPERTY OF COLONIAL WILLIAMSBURG FOUNDATION
CARTERS GROVE TRACT
P.B. 56, PG. 33
D.B. 123, PG. 497
TAX PARCEL 5910100030A
ZONING: R8
OLD AREA=242.309 AC.
(PER JCC ASSESSOR'S OFFICE)
NEW AREA=242.309 AC.

N/F
BASF CORPORATION
P.B. 51, PG. 62
D.B. 456, PG. 624
TAX PARCEL 5940100003
ZONING: M2

PROPERTY OF WILLIAMSBURG DEVELOPMENTS, INC.
P.B. 87, PG. 8-10
D.B. 583, PG. 672
TAX PARCEL 5920100017
ZONING: M1
OLD AREA=88.21 AC.
("A" + "B1" + "B" - SEE SHEET 1)
NEW AREA=53.50± AC.

City of Williamsburg & County of James City
Circuit Court: This PLAT was recorded on
8 October 2003
at 12:18 AM/PM, PB. — PG. —
DOCUMENT # 030030432
BETSY B. WOOLRIDGE, CLERK
Betsy B. Woolridge Clerk

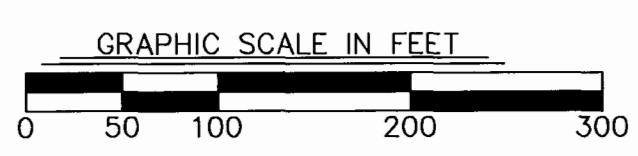
PLAT SHOWING
PARCEL 10 B
BEING A SUBDIVISION OF
THE PROPERTY OF
WILLIAMSBURG DEVELOPMENTS INC.
AND A
BOUNDARY LINE ADJUSTMENT
BETWEEN THE PROPERTIES OF
WILLIAMSBURG DEVELOPMENTS INC.
AND
COLONIAL WILLIAMSBURG FOUNDATION
AT THE
JAMES RIVER COMMERCE CENTER
ROBERTS DISTRICT, JAMES CITY COUNTY, VIRGINIA

CURVE TABLE						
CURVE	RADIUS	LENGTH	TANGENT	CHORD	CHORD BEARING	DELTA
C1	78.00'	99.37'	57.71'	92.78'	S67°23'43"E	72°59'25"
C2	520.00'	112.41'	56.43'	112.19'	N68°18'48"E	12°23'10"
C5	2320.00'	507.53'	254.78'	506.52'	S79°24'40"E	12°32'03"
C6	2320.00'	364.72'	182.74'	364.34'	N89°49'05"E	9°00'26"
C7	2400.00'	944.17'	478.27'	938.09'	S83°24'55"E	22°32'25"
C8	2360.00'	908.26'	459.82'	902.66'	S83°39'37"E	22°03'02"

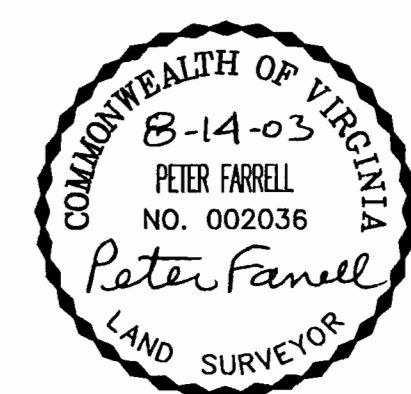
LINE TABLE		
LINE	LENGTH	BEARING
L1	72.32'	N86°55'28"E
L2	70.94'	S79°52'55"E
L3	44.84'	N68°30'57"E
L4	191.75'	S69°48'00"E
L5	52.66'	N82°51'16"E
L6	74.25'	N54°31'00"E

EXTINGUISHED LINES - LINE TABLE		
LINE	LENGTH	BEARING
L7	127.72'	N68°30'57"E
L8	155.50'	S46°48'20"E
L9	82.25'	N54°31'00"E
L10	282.53'	N21°55'30"W

8°49"E
8°34"E



N/F
BASF CORPORATION
P.B. 51, PG. 62
D.B. 456, PG. 624
TAX PARCEL 5940100003
ZONING: M2



DATE: 08/14/03 SCALE: 1"=100'
SHEET 3 OF 3