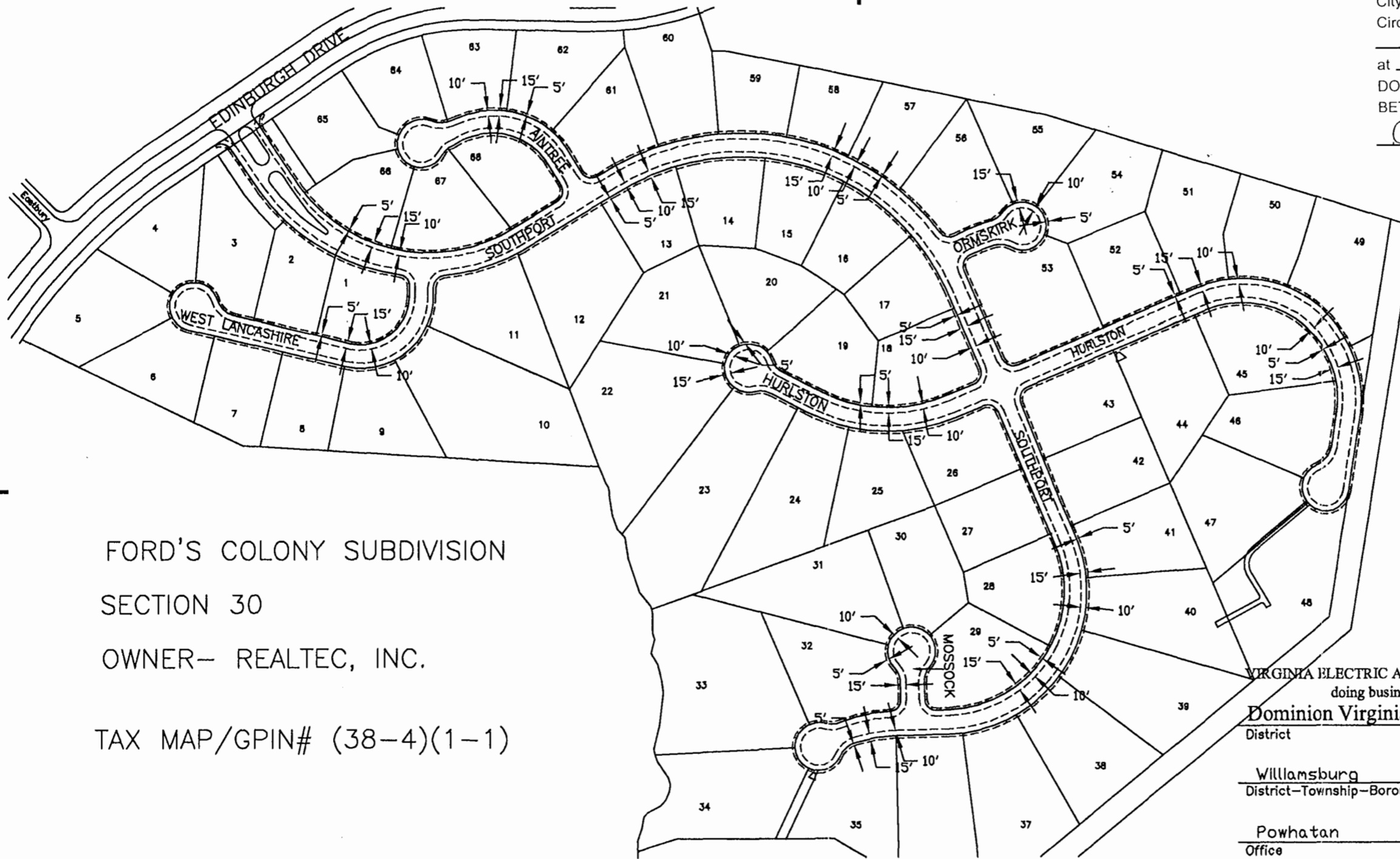


030026814

City of Williamsburg & County of James City
 Circuit Court: This PLAT was recorded on
8 September 2003
 at 12:55 AM/PM. PB PG
 DOCUMENT # 030026814
 BETSY B. WOOLRIDGE, CLERK
Betsy B. Woolridge Clerk



FORD'S COLONY SUBDIVISION
 SECTION 30
 OWNER— REALTEC, INC.
 TAX MAP/GPIN# (38-4)(1-1)

Legend

- Location of Boundary Lines of Right of Way 15'
- ==|== Indicates Property Line is Right-of-Way Boundary

**Plat to Accompany
 Right-of-Way Agreement**

VIRGINIA ELECTRIC AND POWER COMPANY		
doing business as		
Dominion Virginia Power	UG	
District		
Williamsburg	District-Township-Borough	County-City State
Powhatan	James City	VA
Office	Plat Number	
Grayland	10-03-0090	
Estimate Number	Grid Number	
5180976	M1737	
Date	2/21/03	By B. Raymond