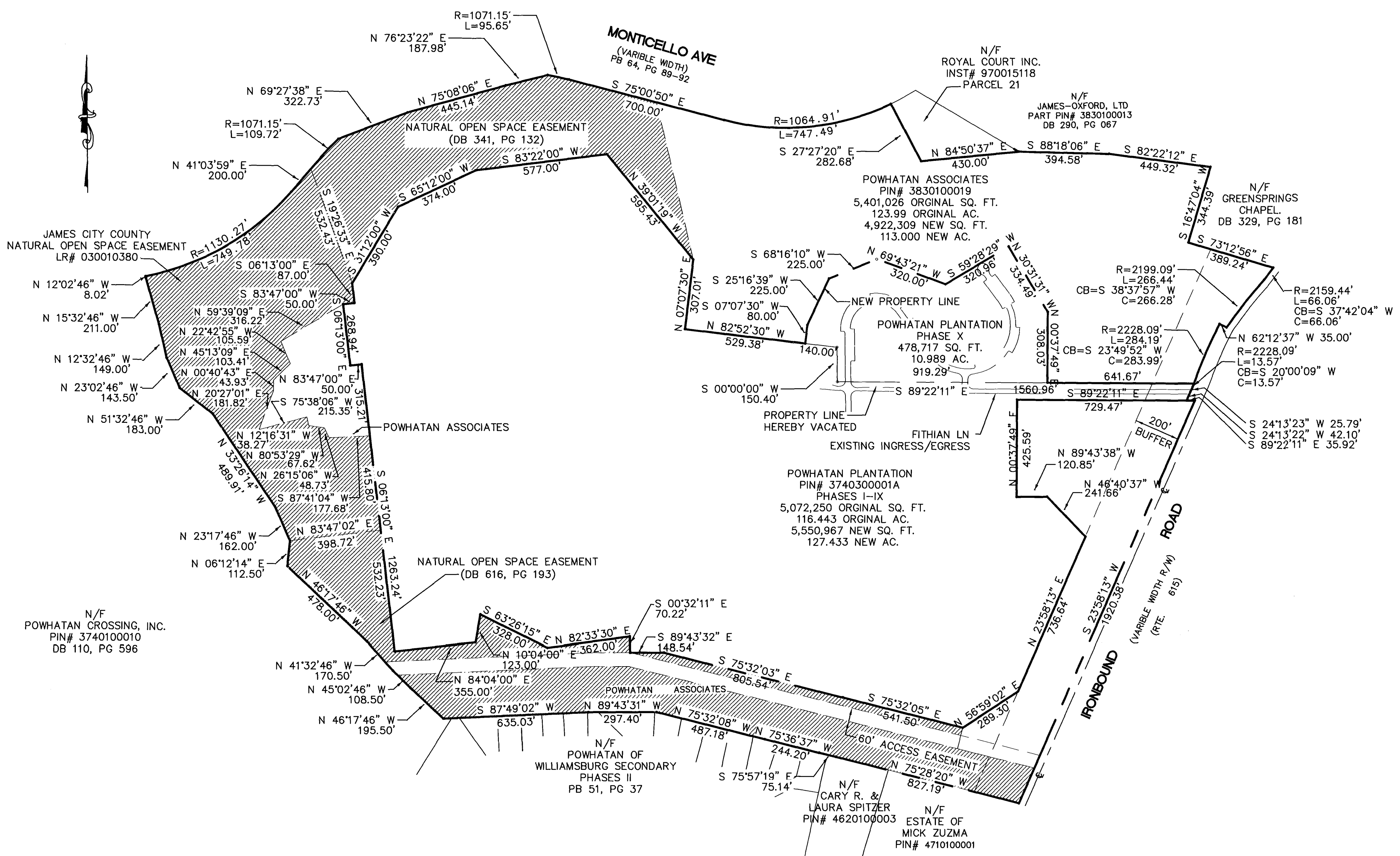
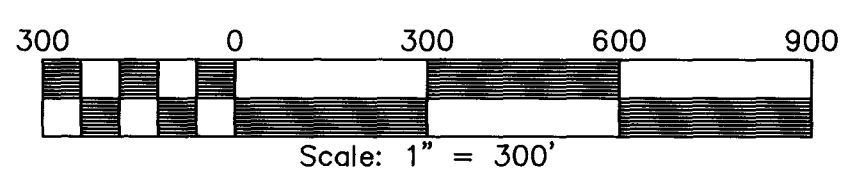


SUBDIVISION PLAT POWHATAN PLANTATION PHASE X

BERKELEY DISTRICT
JAMES CITY COUNTY, VIRGINIA




City of Williamsburg & County of James City
 Circuit Court: This PLAT was recorded on
21 August 2003
 at 10:55 AM/PM 91 PG 30931
 DOCUMENT # 130024746
 BETSY B. WOOLRIDGE, CLERK
Betsy B. Woolridge Clerk



REVISED AS PER COUNTY COMMENTS DATED 7/7/2003

SHEET 2 OF 2



Rickmond Engineering, Inc.
 Engineering Surveying Land Planning
 1643 Merrimac Trail Vint Hill • P.O. Box 861647
 Williamsburg, VA 23185 Warrenton, VA 20187
 Voice: (757)229-1776 Voice: (540)349-7730
 Fax: (757)229-4683 Fax: (540)349-7731
 www.rickmond.com

| | | | |
|--------------------|------------------|-------------------|------------------|
| Checked By: LDE | Drawn By: MCG | Scale: 1"=300' | Date: 5/14/03 |
| | | Job No. 03159 | |