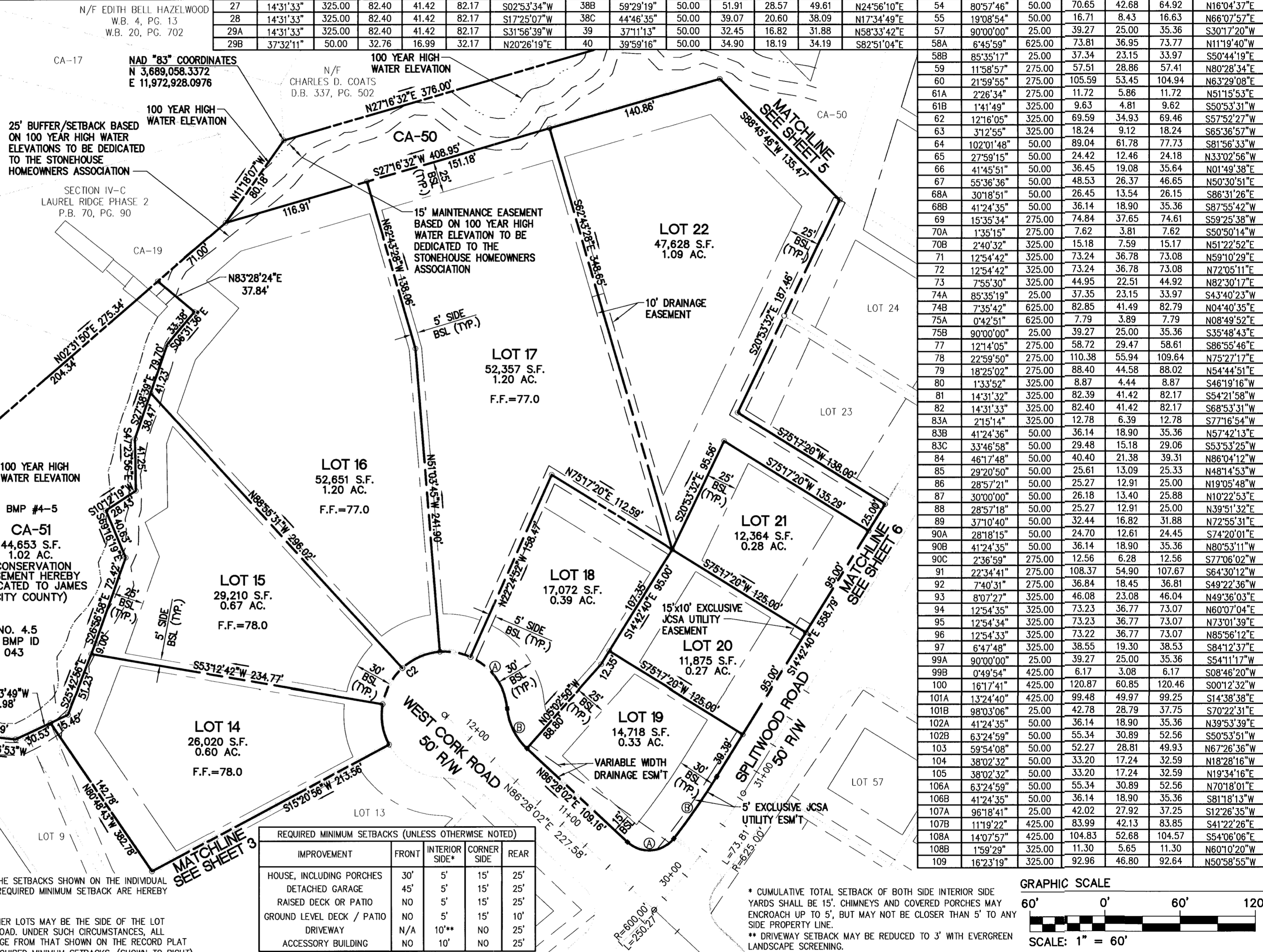


NOTES:
 1. COMMON AREAS AS SHOWN ARE TO BE DEDICATED TO THE STONEHOUSE HOMEOWNERS ASSOCIATION.
 2. IN ACCORDANCE WITH SECTION 19-29(H) OF THE JAMES CITY COUNTY ZONING ORDINANCE THE NATURAL OPEN SPACE EASEMENTS SHALL REMAIN IN A NATURAL UNDISTURBED STATE EXCEPT FOR THOSE ACTIVITIES REFERENCED IN THE DEED OF EASEMENT.

LOT CURVE TABLE						LOT	DELTA	RADIUS	ARC	TANGENT	CHORD	CHORD BEARING	LOT	DELTA	RADIUS	ARC	TANGENT	CHORD	CHORD BEARING	LOT	DELTA	RADIUS	ARC	TANGENT	CHORD	CHORD BEARING
1	18°22'48"	275.00	88.22	44.49	87.84	13B	60°17'29"	50.00	52.61	29.04	50.22	N75°12'11"E	31	43°24'10"	50.00	37.88	19.90	36.98	N89°58'23"W	42	39°59'16"	50.00	34.90	18.19	34.19	N42°51'48"W
2	11°03'40"	475.00	91.70	45.99	91.56	14	37°51'46"	50.00	33.04	17.15	32.44	S55°43'11"E	32	56°49'19"	50.00	49.59	27.05	47.58	N39°51'38"W	43	36°52'23"	50.00	32.18	16.67	31.63	N35°33'17"E
3	10°40'32"	475.00	88.50	44.38	88.37	15	37°51'47"	50.00	33.04	17.15	32.44	S17°51'25"E	33A	95°29'48"	50.00	83.34	55.04	74.02	N36°17'56"E	45	7°48'28"	325.00	44.29	22.18	44.25	N59°04'59"E
4	10°01'48"	475.00	83.15	41.68	83.05	16	37°51'46"	50.00	33.04	17.15	32.44	S20°00'22"W	33B	47°16'52"	50.00	41.26	21.89	40.10	S60°24'22"W	46	12°18'07"	325.00	69.78	35.02	69.65	N69°08'17"E
5	10°28'24"	475.00	86.83	43.54	86.71	17	28°38'53"	50.00	25.00	12.77	24.74	S53°15'41"W	33C	9°08'16"	275.00	43.86	21.98	43.81	S32°11'47"W	48	90°00'00"	25.00	39.27	25.00	35.36	S30°17'20"W
6	8°22'27"	475.00	69.42	34.77	69.36	18A	60°17'28"	50.00	52.61	29.04	50.22	N82°16'08"W	34	24°48'02"	275.00	119.03	60.46	118.11	S15°13'38"W	50	90°00'00"	25.00	39.27	25.00	35.36	S59°42'40"E
7	9°43'54"	475.00	80.68	40.44	80.58	18B	41°24'35"	50.00	36.14	18.90	35.36	S72°49'41"E	35A	17°32'17"	275.00	84.18	42.42	83.85	S05°56'32"E	51A	59°59'57"	50.00	52.36	28.87	50.00	N45°17'21"E
8	10°00'36"	475.00	82.99	41.60	82.88	19A	95°12'55"	25.00	41.55	27.39	36.93	N38°51'34"E	35B	90°00'00"	25.00	39.27	25.00	35.36	S59°42'39"E	51B	60°58'54"	50.00	53.22	29.44	50.74	S45°46'50"W
12A	7°30'18"	575.00	75.32	37.71	75.26	19B	5°57'45"	575.00	59.84	29.95	59.81	N11°43'48"W	37	14°55'08"	275.00	71.61	36.01	71.40	N67°49'46"E	52	50°11'53"	50.00	43.81	23.42	42.42	N78°37'47"W
12B	95°12'56"	25.00	41.55	27.39	36.93	26	10°20'28"	325.00	58.66	29.41	58.58	S09°32'26"E	38A	5°41'22"	275.00	27.31	13.66	27.30	N57°31'31"E	53	29°07'34"	50.00	25.42	12.99	25.14	N38°58'03"W
						27	14°31'33"	325.00	82.40	41.42	82.17	S02°53'34"W	38B	59°29'19"	50.00	51.91	28.57	49.61	N24°56'10"E	54	80°57'46"	50.00	70.65	42.68	64.92	N16°04'37"E
						28	14°31'33"	325.00	82.40	41.42	82.17	S17°25'07"W	38C	44°46'35"	50.00	39.07	20.60	38.09	N17°34'49"E	55	19°08'54"	50.00	16.71	8.43	16.63	N66°07'57"E
						29A	14°31'33"	325.00	82.40	41.42	82.17	S31°56'39"W	39	37°11'13"	50.00	32.45	16.82	31.88	N58°33'42"E	57	90°00'00"	25.00	39.27	25.00	35.36	S30°17'20"W
						29B	37°32'11"	50.00	32.76	16.99	32.17	N20°26'19"E	40	39°59'16"	50.00	34.90	18.19	34.19	S82°51'04"E	58A	6°45'59"	625.00	73.81	36.95	73.77	N11°19'40"W

RIGHT-OF-WAY CURVE TABLE						
CURVE	DELTA	RADIUS	ARC	TANGENT	CHORD	CHORD BEARING
C1	70°21'21"	475.00	583.27	334.80	547.31	S25°59'24"E
C2	262°49'09"	50.00	229.35	56.69	-	S03°31'58"E
C3	53°55'05"	325.00	305.84	165.30	294.68	S12°14'53"W
C4	262°22'35"	50.00	228.97	57.14	-	N47°08'29"W
C5	51°28'35"	275.00	247.07	132.57	238.84	S11°01'37"W
C6	20°36'30"	275.00	98.91	50.00	98.38	N64°59'05"E
C7	238°47'58"	50.00	208.39	88.74	-	N65°24'30"W
C8	20°06'35"	325.00	114.07	57.63	113.48	N65°14'02"E
C9	240°25'01"	50.00	209.80	85.88	-	N44°30'06"W
C10	36°25'26"	275.00	174.82	90.48	171.89	N68°15'19"E
C11	17°10'49"	325.00	97.45	49.09	97.09	S58°38'01"W
C12	41°24'35"	50.00	36.14	18.90	35.36	S46°31'08"W
C13	262°49'10"	50.00	229.35	56.69	-	N22°46'35"W
C14	17°10'49"	275.00	82.46	41.54	82.15	S58°38'01"W
C15	36°25'25"	325.00	206.61	106.93	203.15	N68°15'19"E
C16	8°18'33"	625.00	90.64	45.40	90.56	N05°02'00"E
C17	53°38'57"	275.00	257.50	139.06	248.19	N72°21'49"E
C18	32°52'11"	325.00	186.45	95.87	183.90	S61°58'26"W
C19	262°49'09"	50.00	229.35	56.69	-	N11°35'29"W
C20	32°52'11"	275.00	157.76	81.12	155.61	S61°58'26"W
C21	53°38'57"	325.00	304.32	164.34	293.32	N72°21'49"E
C22	30°32'15"	425.00	226.52	116.02	223.84	S06°04'50"E
C23	262°49'10"	50.00	229.35	56.69	-	N29°24'04"W
C24	25°27'19"	425.00	188.82	95.99	187.27	S48°26'25"E
C25	18°22'48"	325.00	104.26	52.58	103.81	N51°58'40"W



41	39°59'16"	50.00	34.90	18.19	34.19	N42°51'48"W
42	39°59'16"	50.00	34.90	18.19	34.19	N02°52'32"W
43	36°52'23"	50.00	32.18	16.67	31.63	N35°33'17"E
44	7°48'28"	325.00	44.29	22.18	44.25	N59°04'59"E
45	12°18'07"	325.00	69.78	35.02	69.65	N69°08'17"E
46	90°00'00"	25.00	39.27	25.00	35.36	S30°17'20"W
47	90°00'00"	25.00	39.27	25.00	35.36	S59°42'40"E
48	60°58'54"	50.00	53.22	29.44	50.74	S45°46'50"W
49	50°11'53"	50.00	43.81	23.42	42.42	N78°37'47"W
50	29°07'34"	50.00	25.42	12.99	25.14	N38°58'03"W
51	80°57'46"	50.00	70.65	42.68	64.92	N16°04'37"E
52	19°08'54"	50.00	16.71	8.43	16.63	N66°07'57"E
53	90°00'00"	25.00	39.27	25.00	35.36	S30°17'20"W
54	6°45'59"	625.00	73.81	36.95	73.77	N11°19'40"W
55	85°35'17"	25.00	37.34	23.15	33.97	S50°44'19"E
56	11°58'57"	275.00	57.51	28.86	57.41	N80°28'34"E
57	21°59'55"	275.00	105.59	53.45	104.94	N63°29'08"E
58	2°26'34"	275.00	11.72	5.86	11.72	N51°15'53"E
59	1°41'49"	325.00	9.63	4.81	9.62	S50°53'31"W
60	12°16'05"	325.00	69.59	34.93	69.46	S57°52'27"W
61	3°12'55"	325.00	18.24	9.12	18.24	S65°36'57"W
62	102°01'48"	50.00	89.04	61.78	77.73	S81°56'33"W
63	27°59'15"	50.00	24.42	12.46	24.18	N33°02'56"W
64	41°45'51"	50.00	36.45	19.08	35.64	N01°49'38"E
65	55°36'36"	50.00	48.53	26.37	46.65	N50°30'51"E
66	30°18'51"	50.00	26.45	13.54	26.15	S86°31'26"W
67	41°24'35"	50.00	36.14	18.90	35.36	S87°55'42"W
68	15°35'34"	275.00	74.84	37.65	74.61	S59°25'38"W
69	1°35'15"	275.00	7.62	3.81	7.62	S50°50'14"W
70	2°40'32"	325.00	15.18	7.59	15.17	N51°22'52"E
71	12°54'42"	325.00	73.24	36.78	73.08	N59°10'29"E
72	12°54'42"	325.00	73.24	36.78	73.08	N72°05'11"E
73	7°55'30"	325.00	44.95	22.51	44.92	N82°30'17"E
74	85°35'19"	25.00	37.35	23.15	33.97	S43°40'23"W
74B	7°35'42"	625.00	82.85	41.49	82.79	N04°40'35"E
75	0°42'51"	625.00	7.79	3.89	7.79	N08°49'52"E
75B	90°00'00"	25.00	39.27	25.00	35.36	S35°48'43"E
77	12°14'05"	275.00	58.72	29.47	58.61	S86°55'46"E
78	22°59'50"	275.00	110.38	55.94	109.64	N75°27'17"E
79	18°25'02"	275.00	88.40	44.58	88.02	N54°44'51"E
80	1°33'52"	325.00	8.87	4.44	8.87	S46°19'16"W
81	14°31'32"	325.00	82.39	41.42	82.17	S54°21'58"W
82	14°31'33"	325.00	82.40	41.42	82.17	S68°53'31"W
83A	2°15'14"	325.00	12.78	6.39	12.78	S77°16'54"W
83B	41°24'36"	50.00	36.14	18.90	35.36	N57°42'13"E
83C	33°46'58"	50.00	29.48	15.18	29.06	S53°53'25"W
84	46°17'48"	50.00	40.40	21.38	39.31	N86°04'12"W
85	29°20'50"	50.00	25.61	13.09	25.33	N48°14'53"W
86	28°57'21"	50.00	25.27	12.91	25.00	N19°05'48"W
87	30°00'00"	50.00	26.18	13.40	25.88	N10°22'53"E
88	28°57'18"	50.00	25.27	12.91	25.00	N39°51'32"E
89	37°10'40"	50.00	32.44	16.82	31.88	N72°55'31"E
90A	28°18'15"	50.00	24.70	12.61	24.45	S74°20'01"E
90B	41°24'35"	50.00	36.14	18.90	35.36	N80°53'11"W
90C	2°36'59"	275.00	12.56	6.28	12.56	S77°06'02"W
91	22°34'41"	275.00	108.37	54.90	107.67	S64°30'12"W
92	7°40'31"	275.00	36.84	18.45	36.81	S49°22'36"W
93	8°07'27"	325.00	46.08	23.08	46.04	N49°36'03"E
94	12°54'35"	325.00	73.23	36.77	73.07	N60°07'04"E
95	12°54'34"	325.00	73.23	36.77	73.07	N73°01'39"E
96	12°54'33"	325.00	73.22	36.77	73.07	N85°56'12"E
97	6°47'48"	325.00	38.55	19.30	38.53	S84°12'37"E
99A	90°00'00"	25.00	39.27	25.00	35.36	S54°11'17"W
99B	0°49'54"	425.00	6.17	3.08	6.17	S08°46'20"W
100	16°17'41"	425.00	120.87	60.85	120.46	S00°12'32"W
101A	13°24'40"	425.00	99.48	49.97	99.25	S14°38'38"E
101B	98°03'06"	25.00	42.78	28.79	37.75	S70°22'31"E
102A	41°24'35"	50.00				