

90 PAGE 51

#03001011

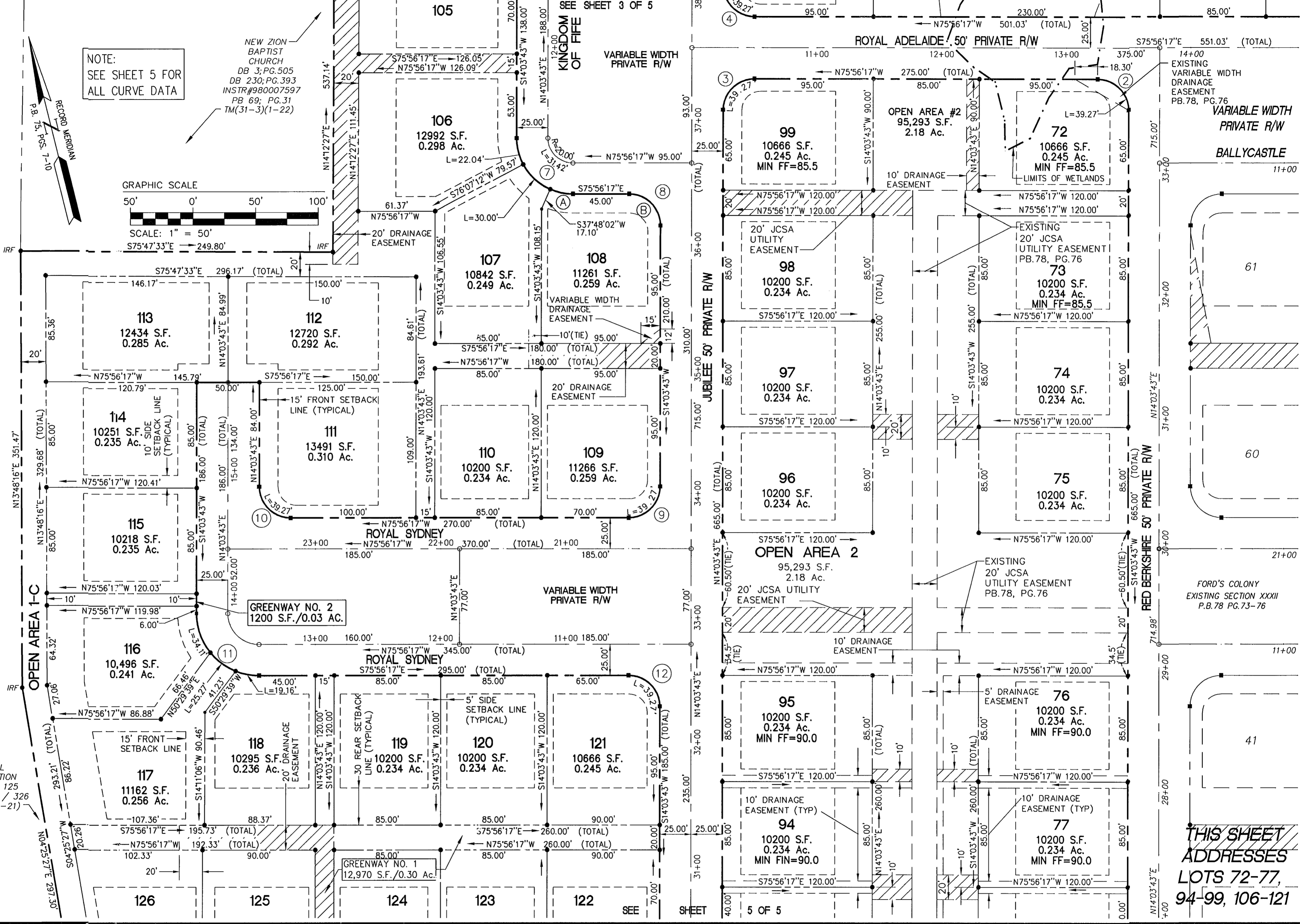
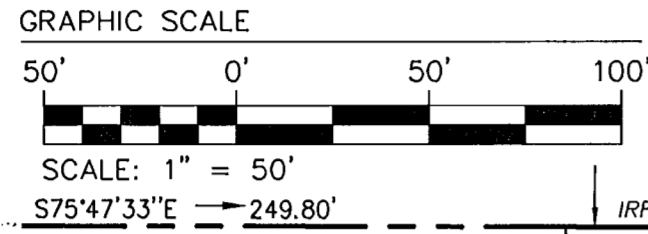
FC32CP04.dwg

06.21.01-17:08

LBA

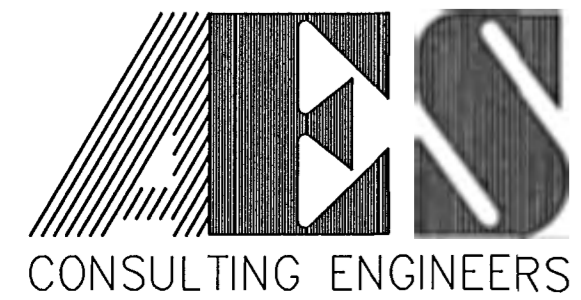
NOTE:
SEE SHEET 5 FOR
ALL CURVE DATA

NEW ZION
BAPTIST
CHURCH
DB 3; PG. 505
DB 230; PG. 393
INSTR #980007597
PB 69; PG. 31
TM(31-3)(1-22)



N/F
WARHILL
CORPORATION
DB 192 / 125
PLAT DB 143 / 326
TM (31-3)(1-21)

**THIS SHEET
ADDRESSES
LOTS 72-77,
94-99, 106-121**



5248 Olde Towne Road, Suite 1
Williamsburg, Virginia 23188
(757) 253-0040
Fax (757) 220-8994

PLAT OF SUBDIVISION
SECTION XXXII
LOTS 72 - 78, 93 - 129
**FORD'S COLONY
AT WILLIAMSBURG**
POWATAN DISTRICT JAMES CITY COUNTY VIRGINIA



City of Williamsburg & County of James City			
Circuit Court: This PLAT was recorded on			
at 1:08 AM/PM, PB 90 PG 48-52			
DOCUMENT # 03001011			
BETSY B. WOOLRIDGE, CLERK			
<i>Betsy B. Woolridge</i> Clerk			
No.	DATE	REVISION / COMMENT / NOTE	BY

Designed CBR	Drawn AES
Scale 1"=50'	Date 6/22/01
Project No. 5652-32C	
Drawing No. 4 OF 5	