
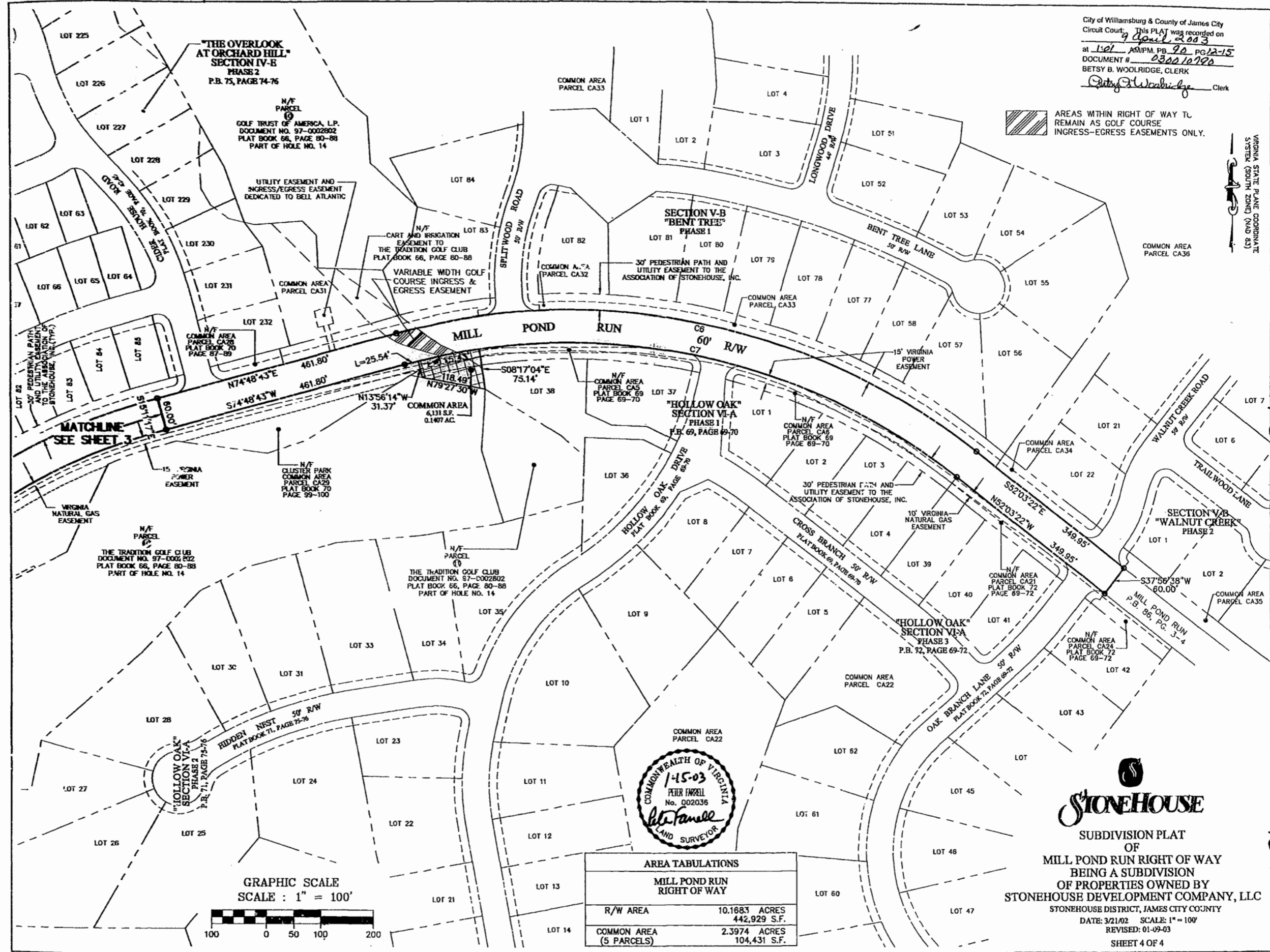


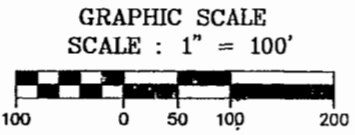
City of Williamsburg & County of James City  
 Circuit Court: This PLAT was recorded on  
9 April 2003  
 at 1:01 PM, P.B. 90, PG. 12-15  
 DOCUMENT # 030010190  
 BETSY B. WOOLRIDGE, CLERK  
*Betsy B. Woolridge* Clerk

 AREAS WITHIN RIGHT OF WAY TL  
 REMAIN AS GOLF COURSE  
 INGRESS-EGRESS EASEMENTS ONLY.


VIRGINIA STATE PLANE COORDINATE  
 SYSTEM (SOUTH ZONE) (NAD 83)



MATCHLINE  
 SEE SHEET 3



AREA TABULATIONS	
MILL POND RUN RIGHT OF WAY	
R/W AREA	10.1683 ACRES 442,929 S.F.
COMMON AREA (5 PARCELS)	2.3974 ACRES 104,431 S.F.

  
 SUBDIVISION PLAT  
 OF  
 MILL POND RUN RIGHT OF WAY  
 BEING A SUBDIVISION  
 OF PROPERTIES OWNED BY  
 STONEHOUSE DEVELOPMENT COMPANY, LLC  
 STONEHOUSE DISTRICT, JAMES CITY COUNTY  
 DATE: 3/21/02 SCALE: 1" = 100'  
 REVISED: 01-09-03  
 SHEET 4 OF 4

#030010190  
 90 PAGE 15