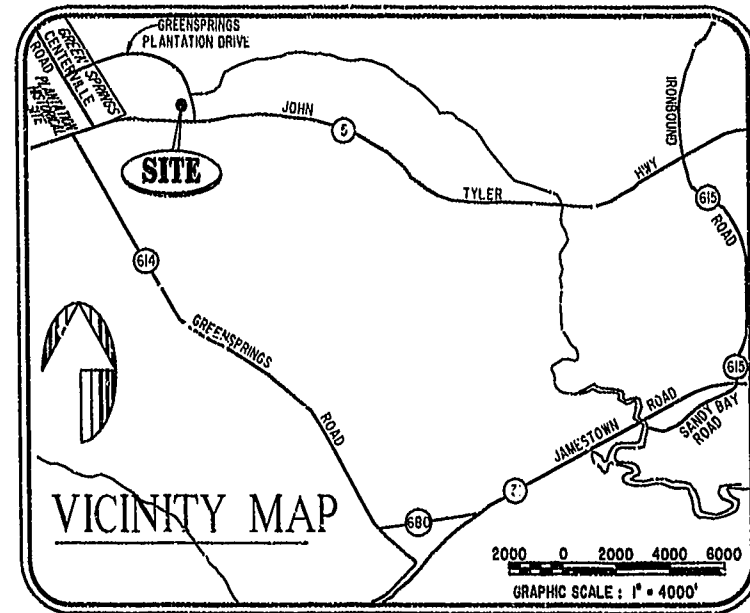


030008163

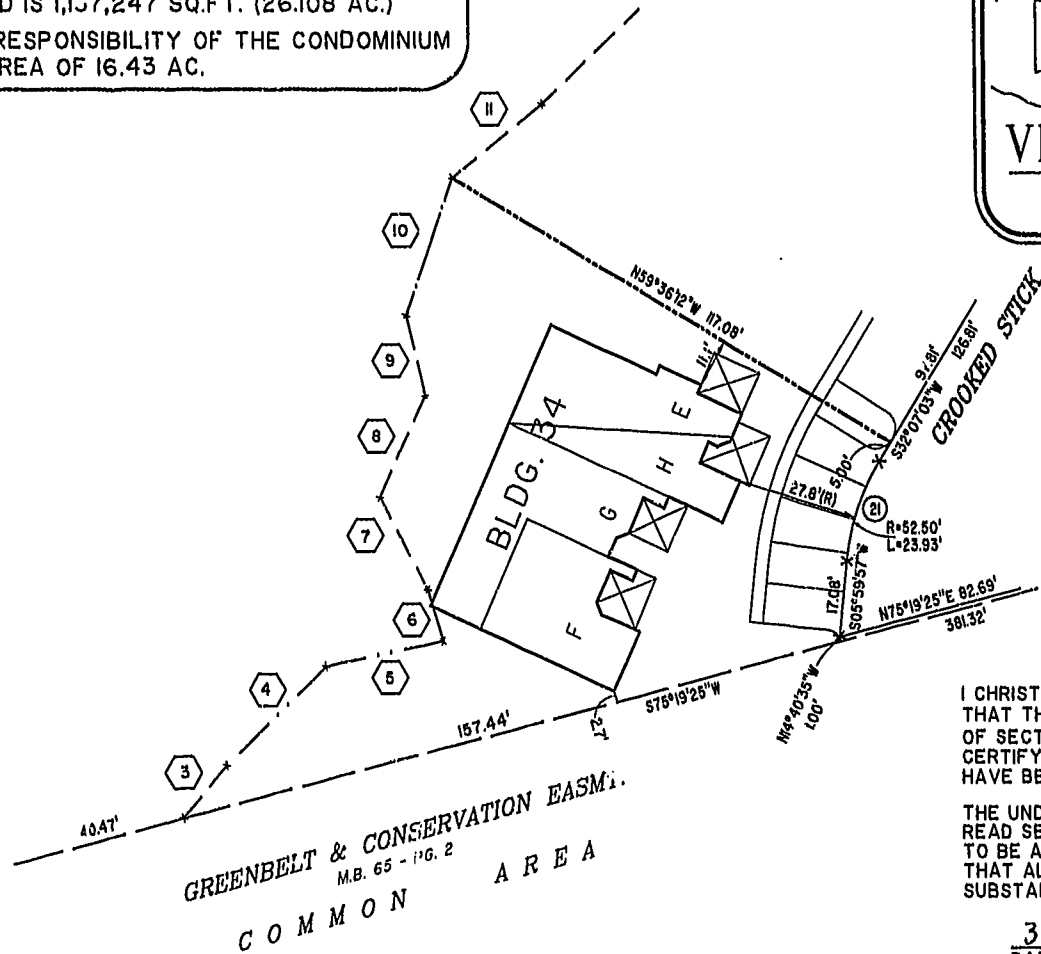
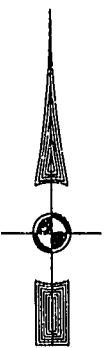
89 PAGE 91

BUILDING NUMBER	UNIT NUMBER	UNIT TYPE	STREET ADDRESS
34	34-438	F	438 CROOKED STICK
34	34-440	G	440 CROOKED STICK
34	34-444	H	444 CROOKED STICK
34	34-446	E	446 CROOKED STICK



NOTES:

1. THE TOTAL AREA OF SITE IS 1,222,568 SQ.FT. (28.07 AC.) OF WHICH 85,321 SQ.FT. (1.959 AC.) IS ADDITIONAL LAND.
2. THE AREA OF THE SUBMITTED LAND IS 1,137,247 SQ.FT. (26.108 AC.)
3. THE COMMON AREA IS TO BE THE RESPONSIBILITY OF THE CONDOMINIUM ASSOCIATION AND HAS A TOTAL AREA OF 16.43 AC.



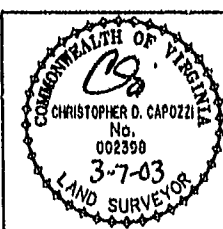
I CHRISTOPHER D. CAPOZZI, A CERTIFIED LAND SURVEYOR, DO HEREBY CERTIFY THAT THIS PLAT IS ACCURATE, AND THAT IT COMPLIES WITH THE PROVISIONS OF SECTION 55 - 79.58A OF THE CODE OF VIRGINIA. I FURTHER HEREBY CERTIFY THAT ALL UNITS OR PORTIONS THEREOF DEPICTED HEREON HAVE BEEN SUBSTANTIALLY COMPLETED.

THE UNDERSIGNED CERTIFIED LAND SURVEYOR CERTIFIES THAT HE HAS READ SECTION 55 - 79.58B OF THE CODE OF VIRGINIA, AND FINDS THIS PLAT TO BE ACCURATE AND IN COMPLIANCE WITH THE CODE. I FURTHER CERTIFY THAT ALL UNITS OR PORTIONS THEREOF DEPICTED HEREON HAVE BEEN SUBSTANTIALLY COMPLETED.

3-7-03
DATE CHRISTOPHER D. CAPOZZI, VA. L.S. No. 002398

PHASE 15
AREA = 10,232 SQ. FT. = 0.235 AC.

City of Williamsburg & County of James City
Circuit Court: This PLAT was recorded on
18 March 2003
at 11:30 AM/HW: PB 89 PG 91-96
DOCUMENT # 030008163
BETSY B. WOOLRIDGE, CLERK
Betsy Woolridge, Dep. Clerk



Hassell & Folkes, P.C.
Engineers Surveyors Planners
325 Volvo Parkway
Chesapeake, VA. 23320
(757) 547-9531

DRAWN BY:	DATE
HJS	02/17/03
COMP BY:	DATE
HF	
CHECKED BY:	DATE
HBA	02/17/03

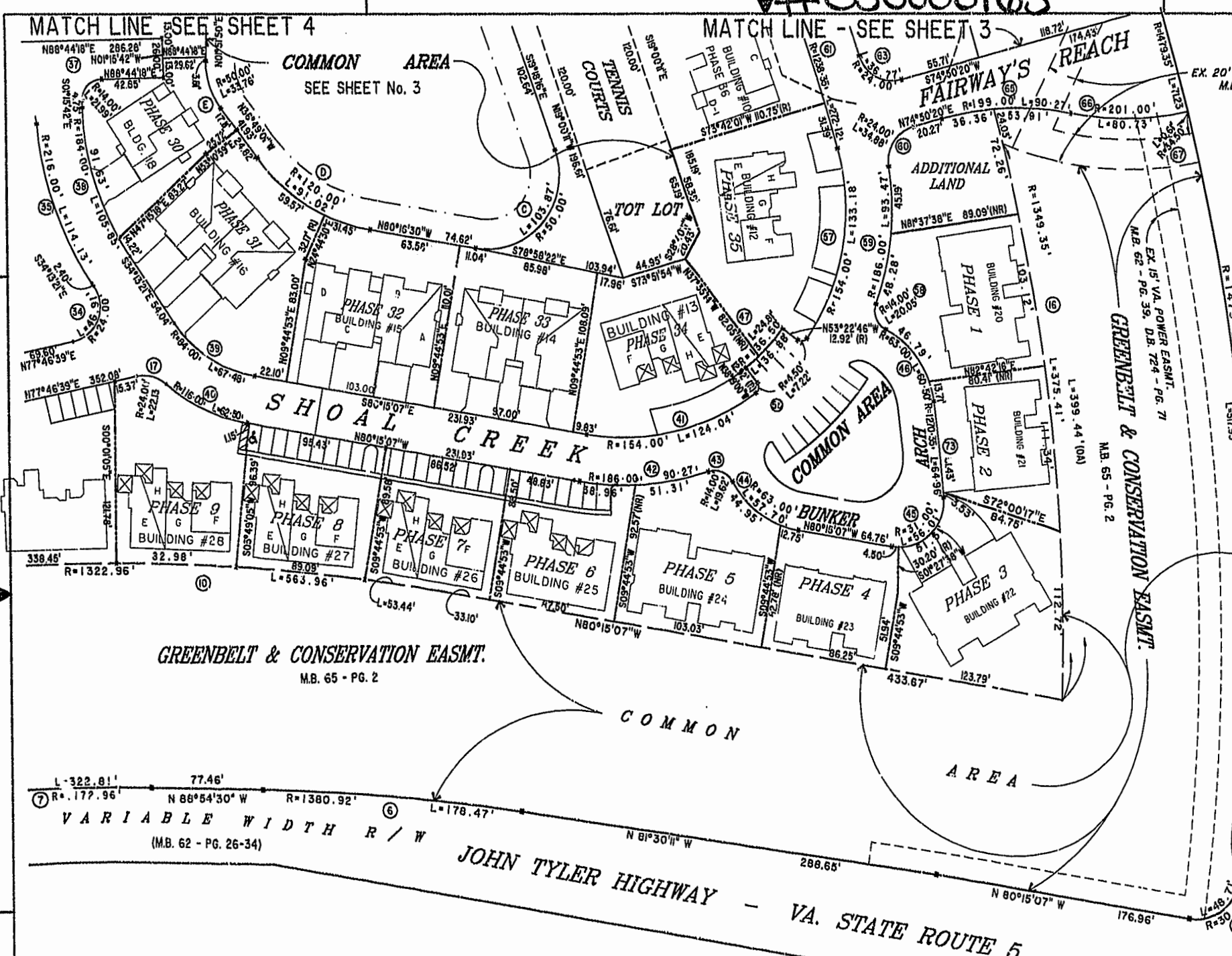
EXHIBIT "A" PHASE 15

FAIRWAYS VILLAS
AT
GREENSPRINGS, A CONDOMINIUM
FOR
GREENSPRINGS DEVELOPMENT, L.C.
BERKELEY DISTRICT JAMES CITY COUNTY, VIRGINIA

SIZE	CONTRACT	FILE NAME	REV.
C	95-079	S:\PLATS\FAIRWAYS\FAIRWY15.DWG	
SCALE: 1" = 25'	DATE: 02/17/03	SHEET 1 of 6	

#030008163

89 PAGE 92



GREENBELT & CONSERVATION EASMT.
EX. 15' VA. POWER EASMT.
M.B. 62 - PG. 59, DB. 724 - PG. 71
M.B. 65 - PG. 2

GREENBELT & CONSERVATION EASMT.
M.B. 65 - PG. 2

GREENBELT & CONSERVATION EASMT.
EX. 20' DRAINAGE ESMT.
M.B. 65, PG. 2

GREENBELT & CONSERVATION EASMT.
M.B. 62 - PG. 26-34

GREENBELT & CONSERVATION EASMT.
M.B. 65 - PG. 2

GREENBELT & CONSERVATION EASMT.
M.B. 65 - PG. 2

GREENBELT & CONSERVATION EASMT.
M.B. 65 - PG. 2

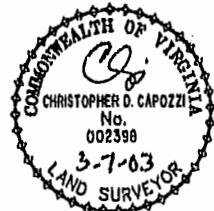
GREENBELT & CONSERVATION EASMT.
M.B. 65 - PG. 2

GREENBELT & CONSERVATION EASMT.
M.B. 65 - PG. 2

GREENBELT & CONSERVATION EASMT.
M.B. 65 - PG. 2

**EXHIBIT "A" PHASE 15
FAIRWAYS VILLAS
AT
GREENSPRINGS, A CONDOMINIUM
FOR
GREENSPRINGS DEVELOPMENT, L.C.
BERKELEY DISTRICT JAMES CITY COUNTY, VIRGINIA**

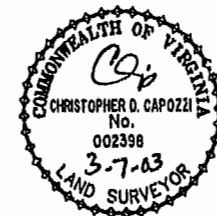
City of Williamsburg & County of James City
Circuit Court: This PLAT was recorded on
18 March 2003
at 11:22 AM AM/PM, PG. 21-92
DOCUMENT # 030008163
BETSY B. WOOLRIDGE, CLERK
Betsy B. Woolridge Clerk



Parsell & Folkes, P.C. Engineers Surveyors Planners Chesapeake, VA 23320 (757) 547-9531	SIZE	CONTRACT NO.	FILE NAME	REV.
	C	95-079	S:\PLATS\FAIRWAYS\FAIRWY15.DWG	
SCALE: 1"=50'	DATE: 02/17/03	SHEET 2 of 6		

City of Williamsburg & County of James City
Circuit Court: This PLAT was recorded on
18 March 2003
at 11:30 AM/PM: PB. 27 PG 9-94
DOCUMENT # 030008163
BETSY B. WOOLRIDGE, CLERK
Betsy B. Woolridge Clerk

46-1-01-0-0001
"GREENSPRINGS PLANTATION"
(DB 322, PG 254)



EXIST. 20' JAMES CITY COUNTY SERVICE
AUTHORITY SAN SEWER EASEMENT AS
SHOWN IN AS-BUILT LOCATION D.B. 141 - PG. 388

EXIST. 20' DRAINAGE EASEMENT
M.B. 65 - PG. 2

MATCH LINE - SEE SHEET 5
N 76°02'42" E

COMMON AREA

ADDITIONAL LAND

LIMITS OF 100' RMA

SHOAL CREEK

PHASE 39 BUILDING #7 (NO. 400 ALT.)

PHASE 38 BUILDING #6 (NO. 400 ALT.)

PHASE 37 BUILDING #5 (NO. 200)

PHASE 36 BUILDING #4 (NO. 400 ALT.)

PHASE 35 BUILDING #3 (NO. 400 ALT.)

PHASE 34 BUILDING #2 (NO. 400 ALT.)

PHASE 33 BUILDING #1 (NO. 400 ALT.)

EX. 50' COLONIAL PIPELINE EASEMENT (D.B. 90 PG. 1)
COMMON AREA

EXIST. 20' DRAINAGE EASMT. P.B. 62 - PG. 27

EXIST. 20' DRAINAGE EASMT. M.B. 65 - PG. 2

MATCH LINE - SEE SHEET 4

FAIRWAY LOOKOUT

COMMON AREA
BMP LAKE #1
AREA = 38,052 SQ. FT. = 0.8735 AC.

TENNIS COURTS

TOT LOT

MATCH LINE - SEE SHEET 2

FAIRWAY'S

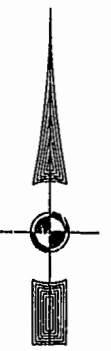
EXHIBIT "A" PHASE 15
FAIRWAYS VILLAS
AT
GREENSPRINGS, A CONDOMINIUM
FOR
GREENSPRINGS DEVELOPMENT, L.C.
BERKELEY DISTRICT JAMES CITY COUNTY, VIRGINIA

Hassel & Pikes, P.C. Engineers Surveyors Planners Charlottesville, VA 22902 (757) 547-9531	SCALE: 1" = 50'	DATE: 02/17/03	S:\PLATS\FAIRWAYS\FAIRWY15.DWG	FILE NAME	REV.
---	-----------------	----------------	--------------------------------	-----------	------

#030008163

89 PAGE 94

EXIST. 20' JAMES CITY COUNTY SERVICE AUTHORITY SAN. SEWER EASEMENT AS SHOWN IN AS-BUILT LOC. TION. D.B. 141 - PG. 388



MATCH LINE - SEE SHEET 5

MATCH LINE - SEE SHEET 2

46-1-01-0-0001 "GREENSPRINGS PLANTATION" (DB 322, PG 254)

PHASE 15 SEE SHEET 1 FOR DETAILS

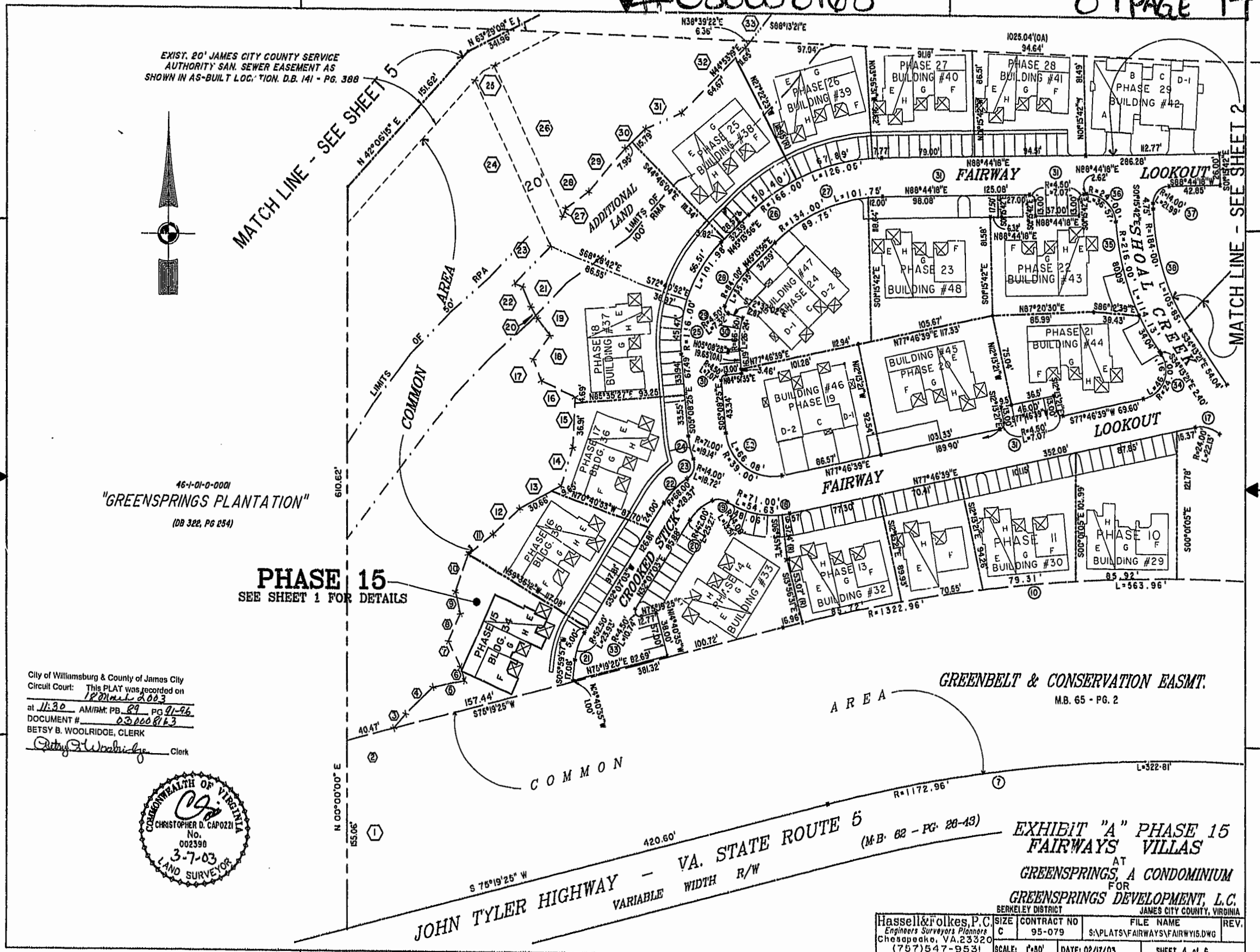
City of Williamsburg & County of James City Circuit Court: This PLAT was recorded on 18th March 2003 at 11:30 AM/PM; PB. 89, PG. 91-96 DOCUMENT # 030008163 BETSY B. WOOLRIDGE, CLERK



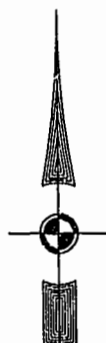
JOHN TYLER HIGHWAY - VA. STATE ROUTE 65 (M.B. 62 - PG. 28-43) VARIABLE WIDTH R/W

GREENBELT & CONSERVATION EASMT. AREA M.B. 65 - PG. 2

Hassell & Rolkes, P.C. Engineers Surveyors Planners Chesapeake, VA 23320 (757) 547-9531	SIZE: C CONTRACT NO: 95-079 DATE: 02/17/03	FILE NAME: S:\PLATS\FAIRWAYS\FAIRWY16.DWG REVISIONS:	SHEET 4 of 6
--	--	---	--------------



46-1-01-0-0001
"GREENSPRINGS PLANTATION"
(DB 322, PG 254)



EXIST. 20' JAMES CITY COUNTY SERVICE
AUTHORITY SAN. SEWER EASEMENT AS
SHOWN IN AS-BUILT LOCATION. D.B. 141 - PG. 8

EXIST. 20' DRAINAGE EASMT.
M.B. 65 - PG. 2

EXIST. 20' DRAINAGE EASEMENT
M.B. 65 - PG. 2

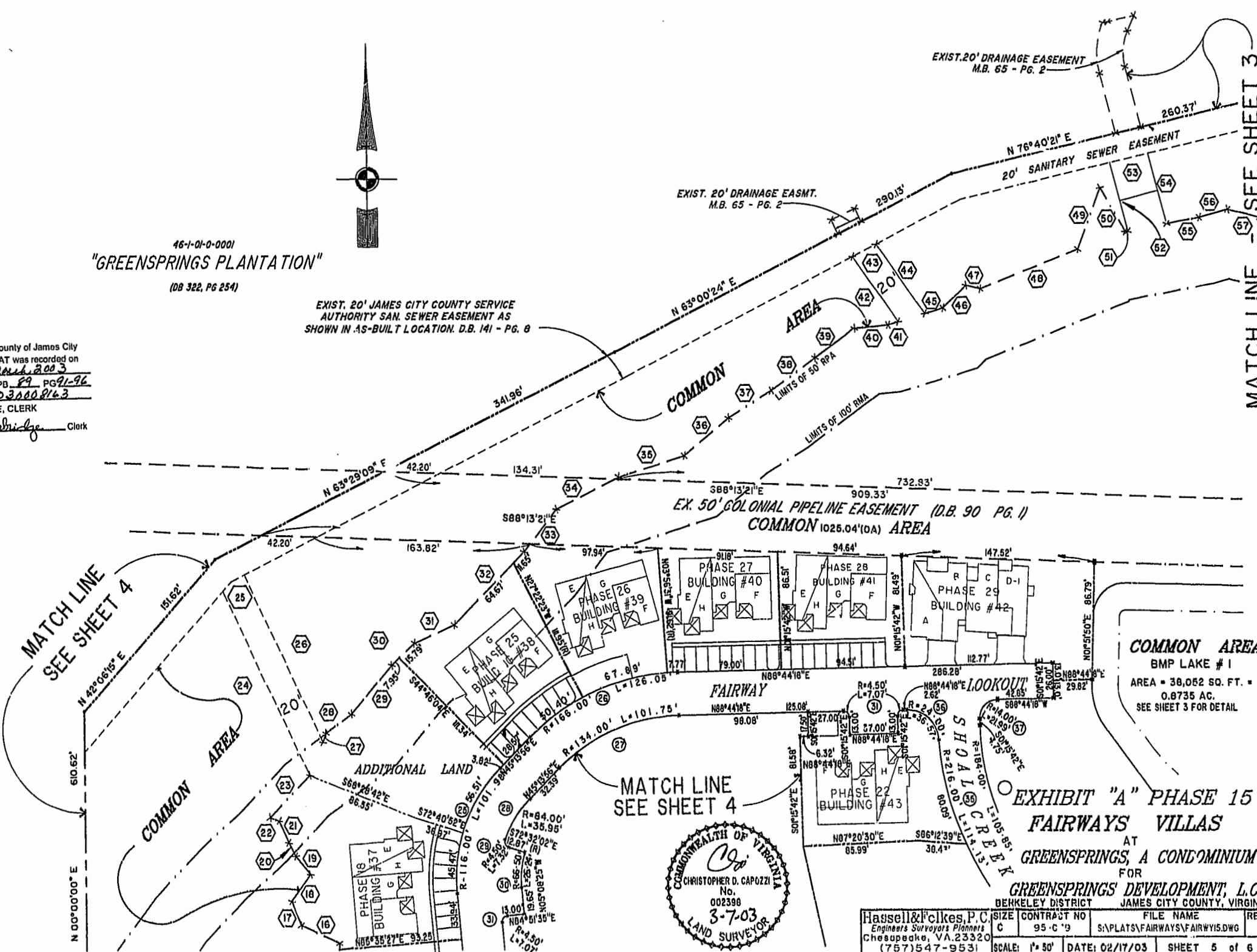
N 76°40'21" E
20' SANITARY SEWER EASEMENT

City of Williamsburg & County of James City
Circuit Court: This PLAT was recorded on
18 March 2003
at 11:30 AM, PM, PG 91-96
DOCUMENT # 030008163
BETSY B. WOOLRIDGE, CLERK
Betsy B. Woolridge Clerk

MATCH LINE - SEE SHEET 3

MATCH LINE
SEE SHEET 4

MATCH LINE
SEE SHEET 4



COMMON AREA
BMP LAKE # 1
AREA = 38,082 SQ. FT. =
0.8735 AC.
SEE SHEET 3 FOR DETAIL

EXHIBIT "A" PHASE 15
FAIRWAYS VILLAS
AT
GREENSPRINGS, A CONDOMINIUM
FOR
GREENSPRINGS DEVELOPMENT, L.C.
BERKELEY DISTRICT JAMES CITY COUNTY, VIRGINIA



Hassell & Cikes, P.C. Engineers Surveyors Planners Chesapeake, VA 23320 (757) 547-9531	SIZE C	CONTRACT NO 95-C-9	FILE NAME S:\PLATS\FAIRWAYS\FAIRWY15.DWG	REV.
SCALE: 1" = 50'	DATE: 02/17/03	SHEET 5 of 6		

030008163

89 PAGE 96

N°	BEARING	DISTANCE	N°	BEARING	DISTANCE	N°	BEARING	DISTANCE	N°	BEARING	DISTANCE
1	NORTH	155.06'	21	N24°19'39"W	18.00'	41	N73°24'07"E	8.57'	61	S50°48'30"E	28.39'
2	N75°19'25"E	40.47'	22	N69°19'39"W	7.07'	42	N35°32'25"W	59.16'	62	S61°14'26"E	64.31'
3	N40°42'39"E	15.76'	23	N44°31'02"E	43.59'	43	N63°00'24"E	20.22'	63	N89°22'10"E	8.13'
4	N46°05'27"E	32.02'	24	N25°21'31"W	150.65'	44	S35°32'25"E	63.02'			
5	N78°05'22"E	27.59'	25	N83°03'23"E	20.41'	45	N73°24'07"E	14.72'			
6	N16°44'45"W	12.04'	26	S25°21'31"E	136.97'	46	N46°21'12"E	24.05'			
7	N27°24'57"W	23.32'	27	N19°51'26"E	5.90'	47	S77°39'56"E	11.29'			
8	N24°46'40"E	25.18'	28	N63°59'32"E	24.16'	48	N68°43'48"E	60.58'			
9	N13°22'46"W	16.36'	29	N40°41'58"E	47.56'	49	N21°06'45"E	49.92'			
10	N19°16'53"E	32.76'	30	N46°43'41"E	23.74'	50	S30°15'14"E	37.69'			
11	N51°25'11"E	26.57'	31	N66°20'36"E	33.45'	51	N79°32'01"E	1.93'			
12	N46°33'07"E	31.05'	32	N44°53'19"E	76.32'	52	N14°37'46"W	62.29'			
13	N61°21'55"E	40.31'	33	N38°39'22"E	40.18'	53	N76°40'21"E	30.01'			
14	N17°35'03"E	32.98'	34	N63°44'13"E	53.14'	54	S14°37'46"E	53.80'			
15	N02°43'14"E	41.60'	35	N72°23'40"E	92.44'	55	N79°32'01"E	25.17'			
16	N65°30'48"W	31.89'	36	N50°42'36"E	43.97'	56	N74°56'16"E	22.42'			
17	N21°18'53"W	19.03'	37	N56°37'17"E	38.80'	57	S76°45'41"E	24.45'			
18	N35°55'39"E	24.19'	38	N54°09'52"E	41.40'	58	N75°14'55"E	58.28'			
19	N37°34'05"W	17.46'	39	N64°09'52"E	37.13'	59	N63°10'12"E	52.44'			
20	N29°31'19"W	11.05'	40	N64°42'43"E	25.55'	60	N66°02'13"E	42.50'			

CURVE DATA

N°	DELTA	RADIUS	LENGTH	TANGENT	CHORD	N°	DELTA	RADIUS	LENGTH	TANGENT	N°	DELTA	RADIUS	LENGTH	TANGENT
1	00°21'13"	1457.00'	8.99'	4.50'	S29°17'32"E 8.99'	36	87°18'45"	24.00'	36.57'	22.90'	71	95°17'54"	4.50'	7.48'	4.94'
2	03°49'33"	1482.35'	98.98'	49.51'	S27°33'21"E 98.98'	37	90°00'00"	14.00'	21.99'	14.00'	72	73°35'34"	41.00'	52.66'	30.67'
3	02°12'22"	1457.35'	56.11'	28.06'	S18°24'28"E 56.11'	38	32°57'39"	184.00'	105.85'	54.43'	73	02°55'47"	1270.35'	64.96'	32.49'
4	22°49'06"	1478.35'	589.16'	298.63'	S04°41'57"E 585.27'	39	46°01'46"	84.00'	67.48'	35.68'					
5	93°02'17"	30.00'	48.71'	31.63'	S53°13'44"E 43.54'	40	30°52'07"	116.10'	62.50'	32.03'					
6	07°24'18"	1380.92'	178.47'	89.36'	N85°12'21"W 178.35'	41	1°08'54"	15.00'	124.04'	65.60'					
7	15°46'06"	1172.96'	322.81'	162.43'	S83°12'28"W 321.79'	42	27°48'28"	186.00'	90.27'	46.04'					
8	06°04'13"	1349.35'	142.96'	71.55'		43	80°16'51"	14.00'	19.82'	11.81'					
9	16°33'24"	1349.35'	389.91'	196.32'		44	52°28'22"	63.00'	57.70'	31.05'					
10	24°26'28"	1322.96'	573.96'	286.33'		45	103°31'29"	31.00'	56.01'	39.34'					
						46	55°01'24"	63.00'	60.50'	32.81'					
						47	10°24'49"	136.50'	24.81'	12.44'					
16	16°57'40"	1349.35'	399.44'	201.19'		50	91°55'00"	4.50'	7.22'	4.65'					
17	52°50'21"	24.00'	22.13'	11.92'		56	15°20'57"	136.50'	36.08'	18.56'					
18	44°05'16"	71.00'	54.63'	28.75'		57	49°33'05"	154.00'	133.18'	71.08'					
19	55°16'25"	14.00'	13.51'	7.33'		58	82°03'57"	14.00'	20.05'	12.18'					
20	34°28'27"	42.00'	25.27'	13.03'		59	28°47'34"	186.00'	93.47'	47.74'					
21	26°07'06"	52.50'	23.93'	12.18'		60	83°16'14"	24.00'	34.88'	21.33'					
22	23°54'28"	60.00'	28.37'	14.40'		61	12°35'25"	1238.35'	272.12'	136.61'					
23	76°36'32"	14.00'	18.72'	11.06'		62	10°03'54"	1270.35'	223.16'	111.87'					
24	15°26'37"	71.00'	19.14'	9.63'		63	87°47'18"	24.00'	36.77'	23.09'					
25	50°22'21"	116.00'	101.98'	54.55'		64	16°25'32"	32.50'	9.37'	4.69'					
26	43°30'21"	166.00'	126.05'	65.24'		65	25°59'26"	199.00'	90.37'	45.93'					
27	43°30'21"	134.00'	101.75'	53.47'		66	23°00'40"	201.00'	80.73'	40.91'					
28	24°31'17"	84.00'	35.95'	18.25'		67	01°01'24"	34.50'	0.61'	0.31'					
29	93°14'42"	4.50'	7.32'	4.76'		68	60°47'05"	71.00'	78.32'	41.64'					
30	22°36'22"	66.50'	26.24'	13.29'		69	60°47'05"	39.00'	41.37'	22.87'					
31	90°00'00"	4.50'	7.07'	4.50'		70	68°17'41"	27.50'	32.78'	18.65'					
32	97°04'56"	39.00'	66.08'	44.15'											
33	136°47'38"	4.50'	10.74'	11.05'											
34	112°00'00"	24.00'	46.91'	39.80'											
35	30°16'23"	216.00'	114.13'	58.43'											

LAKE CURVE DATA

N°	DELTA	RADIUS	LENGTH	TANGENT
A	89°31'48"	25.00'	39.06'	24.80'
B	69°18'06"	50.00'	60.48'	34.56'
C	119°01'46"	50.00'	103.87'	84.93'
D	43°27'29"	120.00'	91.02'	47.82'
E	38°40'50"	50.00'	33.76'	17.65'



City of Williamsburg & County of James City
 Circuit Court: This PLAT was recorded on
 18 March 2003
 at 11:30 AM/PM, PB 89, PG 2-26
 DOCUMENT # 030008163
 BETSY B. WOOLRIDGE, CLERK
 Betsy B. Woolridge, Clerk

EXHIBIT "A" PHASE 15
 FAIRWAYS VILLAS
 AT
 GREENSPRINGS, A CONDOMINIUM
 FOR
 GREENSPRINGS DEVELOPMENT, L.C.
 BERKELEY DISTRICT JAMES CITY COUNTY, VIRGINIA

Hassell & Folkes, P.C. Engineers Surveyors Planners Chesapeake, VA 23320 (757)547-9531	SIZE: C CONTRACT NO: 95-079	FILE NAME: S:\PLATS\FAIRWAYS\FAIRW15.DWG	REV.
SCALE: NONE	DATE: 02/17/03	SHEET 6 of 6	