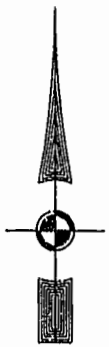
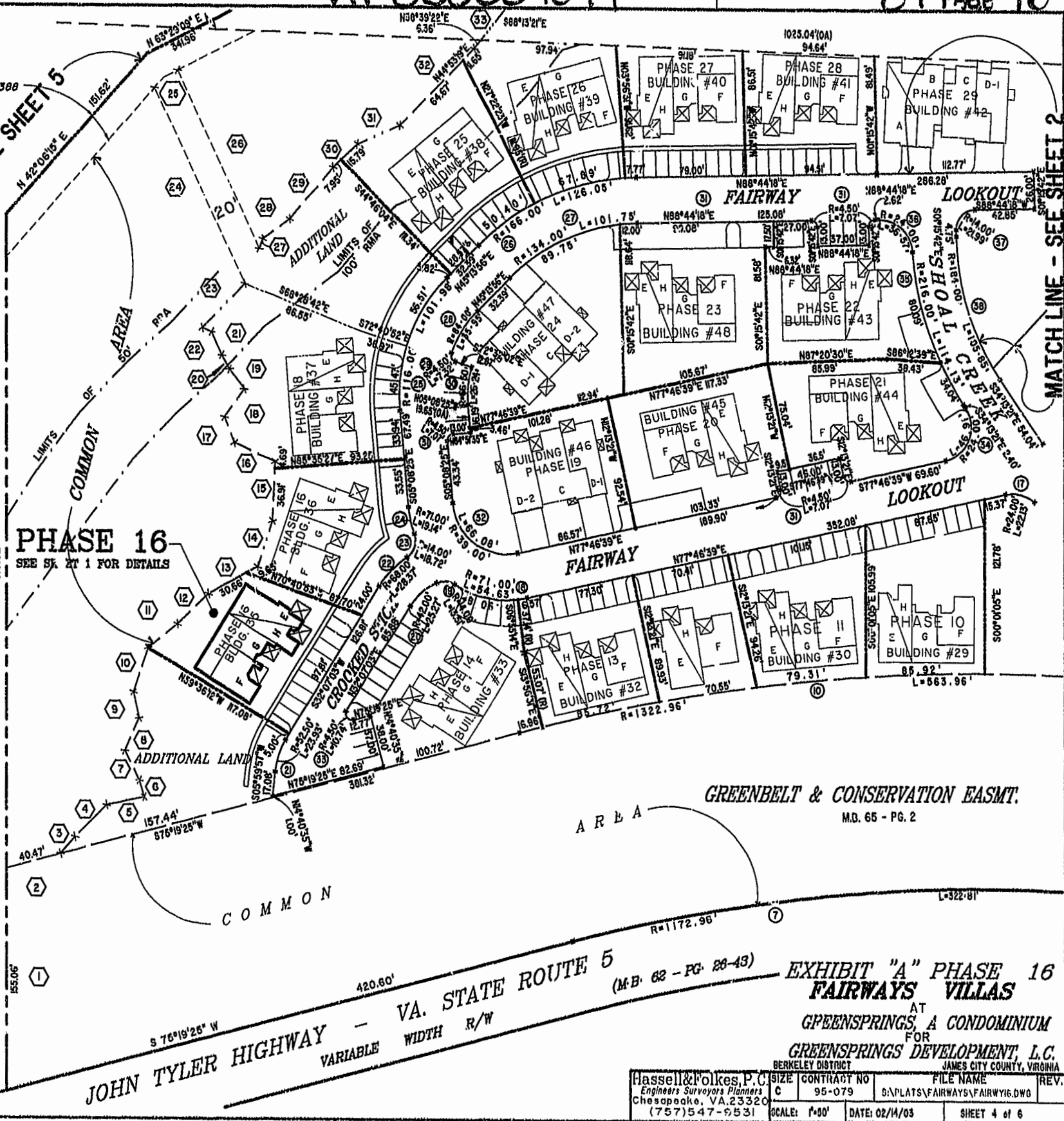


EXIST. 20' JAMES CITY COUNTY SERVICE AUTHORITY SAN. SEWER EASEMENT AS SHOWN IN AS-BUILT LOCATION. D.B. 141 - PG. 388



MATCH LINE - SEE SHEET 5

MATCH LINE - SEE SHEET 2



45-1-01-0-0001
"GREENSPRINGS PLANTATION"
(DB 322, PG 254)

PHASE 16
SEE SK. AT 1 FOR DETAILS

GREENBELT & CONSERVATION EASMT.
M.D. 65 - PG. 2

VA. STATE ROUTE 5
JOHN TYLER HIGHWAY - VARIABLE WIDTH R/W
(M.B. 62 - PG. 26-43)

City of Williamsburg & County of James City
Circuit Court: This PLAT was recorded on
7 March 2003
at 11:34 AM P.M. PB 89, PG 23-78
DOCUMENT # 030007099
BEFORE B. WOODBRIDGE, CLERK
Cathy S. Woodbridge, Prop. Clerk



EXHIBIT "A" PHASE 16
FAIRWAYS VILLAS
AT
GREENSPRINGS, A CONDOMINIUM
FOR
GREENSPRINGS DEVELOPMENT, L.C.
BERKELEY DISTRICT JAMES CITY COUNTY, VIRGINIA

Hassell & Folkes, P.C. Engineers Surveyors Planners Chesapeake, VA. 23320 (757) 547-9531	SIZE: C CONTRACT NO: 95-079 SCALE: 1"=00'	FILE NAME: G:\PLATS\FAIRWAYS\FAIRWAY16.DWG	REV.:
DATE: 02/14/03		SHEET 4 of 6	