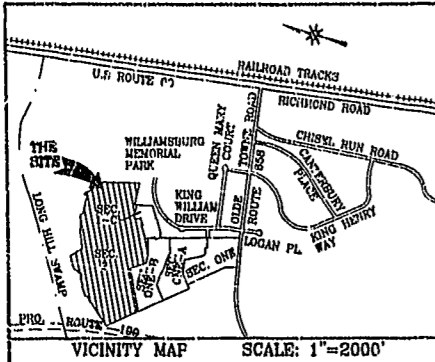


#030006189

89 PAGE 60



STATE OF VIRGINIA COUNTY OF JAMES CITY  
 IN THE CLERK'S OFFICE OF THE CIRCUIT COURT OF THE  
 COUNTY OF JAMES CITY THIS 20 DAY OF December  
 2003, THE MAP SHOWN HEREON WAS PRESENTED AND ADMITTED  
 TO THE RECORD AS THE LAW DIRECTS. @ 2:04PM  
 TESTE: Betsy B. Woolridge CLERK  
 PLAT BOOK 89 PAGE 60-66

City of Williamsburg & County of James City  
 Circuit Court: This PLAT was recorded on  
27 Feb 2003  
 at 2:04 PM P.M. PB 89 PG 60-66  
 DOCUMENT # 030006189  
 BETSY B. WOOLRIDGE, CLERK  
Betsy B. Woolridge Clerk

SCOTT'S POND  
 SECTION TWO  
 POWHATAN DISTRICT  
 JAMES CITY COUNTY, VIRGINIA

ADPA A.D. POTTS & ASSOCIATES, INC.  
 11524 JEFFERSON AVENUE  
 NEWPORT NEWS, VIRGINIA 23601  
 PHONE: (757)-595-4610

SCALE: N/A JULY 17, 2002  
 SHEET 1 OF 7 REV: OCTOBER 14, 2002  
 REV: DECEMBER 18, 2002

OWNER'S CERTIFICATE

THE SUBDIVISION OF LAND SHOWN ON THIS PLAT AND  
 KNOWN AS SCOTT'S POND, SECTION TWO, IS WITH THE FREE  
 CONSENT AND IN ACCORDANCE WITH THE DESIRES OF THE  
 UNDERSIGNED OWNERS, PROPRIETORS, AND TRUSTEES.  
 SCOTT'S POND, L.L.C.

12-20-02  
 DATE Peter V. Henderson, MANAGER

CERTIFICATE OF NOTARIZATION

STATE OF VIRGINIA  
 CITY/COUNTY OF Williamsburg  
 I, Donna A. Chapman  
 A NOTARY PUBLIC IN AND FOR THE CITY/COUNTY AND STATE  
 AFORESAID, DO HEREBY CERTIFY THAT THE PERSON WHOSE  
 NAME IS SIGNED TO THE FOREGOING WRITING HAS  
 ACKNOWLEDGED THE SAME BEFORE ME IN THE CITY/COUNTY  
 AFORESAID.  
 GIVEN UNDER MY NAME THIS 20 DAY OF December, 2002.  
 MY COMMISSION EXPIRES 11/30/05  
Donna A. Chapman  
 NOTARY PUBLIC

1-12-02  
 DATE Kenneth O. Moran  
 KENNETH O. MORAN  
 SENIOR VICE PRESIDENT  
 OLD POINT NATIONAL BANK

CERTIFICATE OF NOTARIZATION

STATE OF VIRGINIA  
 CITY/COUNTY OF James City County  
 I, Mary Ann Rogers  
 A NOTARY PUBLIC IN AND FOR THE CITY/COUNTY AND STATE  
 AFORESAID, DO HEREBY CERTIFY THAT THE PERSON WHOSE  
 NAME IS SIGNED TO THE FOREGOING WRITING HAS  
 ACKNOWLEDGED THE SAME BEFORE ME IN THE CITY/COUNTY  
 AFORESAID.  
 GIVEN UNDER MY NAME THIS 20th DAY OF December, 2002.  
 MY COMMISSION EXPIRES 1-27-2005  
Mary Ann Rogers  
 NOTARY PUBLIC

AREA TABULATIONS

AREA OF DEDICATED R/W	7.2724 Ac.
AREA OF OPEN SPACE	21.1837 Ac.
AREA OF LOTS	28.7387 Ac.
TOTAL AREA	57.1948 Ac.

TOTAL NUMBER OF LOTS = 07  
 PUMP STATION LOT = 1

SURVEYOR'S CERTIFICATE

I HEREBY CERTIFY THAT TO THE BEST OF MY KNOWLEDGE  
 AND BELIEF, THIS PLAT COMPLIES WITH ALL OF THE  
 REQUIREMENTS OF THE BOARD OF SUPERVISORS AND ORDINANCES  
 OF THE COUNTY OF JAMES CITY, VIRGINIA, REGARDING THE  
 PLATTING OF SUBDIVISIONS WITHIN THE COUNTY.

7-17-02  
 DATE Anthony D. Potts  
 ANTHONY D. POTTS, L.S.



CERTIFICATE OF APPROVAL

THIS SUBDIVISION IS APPROVED BY THE UNDERSIGNED IN  
 ACCORDANCE WITH EXISTING SUBDIVISION REGULATIONS AND  
 MAY BE ADMITTED TO RECORD.

1/2/2003  
 DATE John Barr  
 VIRGINIA DEPARTMENT OF TRANSPORTATION

1/2/03  
 DATE John Barr  
 VIRGINIA DEPARTMENT OF HEALTH

2/20/03  
 DATE Anthony D. Potts  
 SUBDIVISION AGENT OF JAMES CITY COUNTY

#03000689

89 PAGE 61

STATE OF VIRGINIA COUNTY OF JAMES CITY  
IN THE CLERK'S OFFICE OF THE CIRCUIT COURT OF THE  
COUNTY OF JAMES CITY THIS 27 DAY OF February  
2003, THE MAP SHOWN HEREON WAS PRESENTED AND ADMITTED  
TO THE RECORD AS THE LAW DIRECTS.

TESTE: Betsy B. Woolridge @ 2:04PM  
CLERK

PLAT BOOK 89 PAGE 60-66

# SCOTT'S POND

## SECTION TWO

### POWHATAN DISTRICT

#### JAMES CITY COUNTY, VIRGINIA

ADPA A.D. POTTS & ASSOCIATES, INC.  
11624 JEFFERSON AVENUE  
NEWPORT NEWS, VIRGINIA 23601  
PHONE: (757)-595-4610

SCALE: N/A JULY 17, 2002  
SHEET 3 OF 7 REV: OCTOBER 14, 2002  
REV: DECEMBER 18, 2002

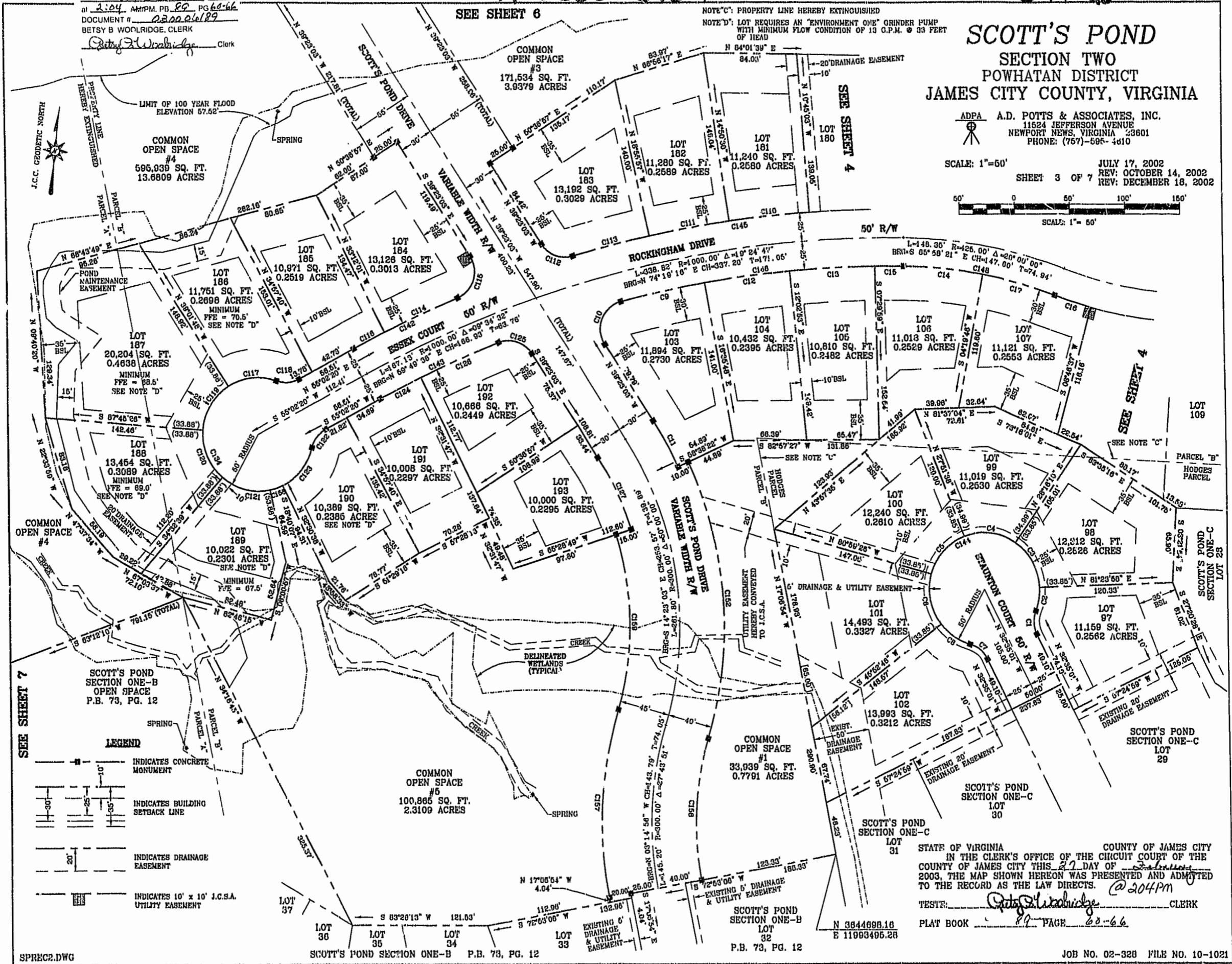
CURVE	DELTA ANGLE	RADIUS	ARC LENGTH	TANGENT	CHORD LENGTH	CHORD BEARING
C1	48°11'23"	25.00'	21.03'	11.18'	20.41'	S 08°24'19" E
C2	24°12'24"	50.00'	21.12'	10.72'	20.97'	N 03°30'10" E
C3	53°07'48"	50.00'	46.36'	25.00'	44.72'	N 35°09'58" W
C4	53°07'48"	50.00'	46.36'	25.00'	44.72'	N 35°09'58" W
C5	53°07'48"	50.00'	46.36'	25.00'	44.72'	S 35°34'28" W
C6	53°07'48"	50.00'	46.36'	25.00'	44.72'	S 17°33'20" E
C7	48°11'23"	25.00'	21.03'	11.18'	20.41'	N 56°40'42" W
C8	36°39'10"	50.00'	31.99'	16.56'	31.44'	S 62°26'48" E
C9	04°34'34"	975.00'	77.87'	38.96'	77.85'	S 71°09'55" W
C10	100°12'41"	25.00'	47.22'	34.54'	40.50'	S 14°43'18" W
C11	08°01'25"	350.00'	46.21'	23.14'	46.18'	N 35°22'20" W
C12	04°32'55"	975.00'	77.40'	38.72'	77.38'	S 75°40'40" W
C13	04°32'55"	975.00'	77.40'	38.72'	77.38'	S 80°13'34" W
C14	10°18'07"	400.00'	71.92'	36.03'	71.83'	S 89°10'43" W
C15	01°31'38"	975.00'	25.99'	12.99'	25.99'	S 83°15'50" W
C16	05°15'02"	375.00'	34.36'	17.18'	34.35'	S 78°35'52" E
C17	09°41'53"	400.00'	67.70'	33.83'	67.62'	N 80°49'17" W
C18	11°32'13"	375.00'	75.51'	37.88'	75.36'	S 86°59'30" E
C19	10°42'42"	375.00'	70.11'	35.18'	70.01'	N 81°53'03" E
C20	10°42'42"	375.00'	70.11'	35.18'	70.01'	N 71°10'21" E
C21	10°42'42"	375.00'	70.11'	35.18'	70.01'	N 60°27'39" E
C22	10°42'42"	375.00'	70.11'	35.18'	70.01'	N 49°44'57" E
C23	53°19'44"	25.00'	23.27'	12.55'	22.44'	N 08°47'51" W
C24	19°44'56"	325.00'	112.02'	56.57'	111.47'	N 45°20'10" W
C25	91°11'38"	25.00'	39.79'	25.53'	35.72'	S 79°11'33" W
C26	10°47'52"	375.00'	70.67'	35.44'	70.57'	N 38°59'40" E
C27	84°49'51"	50.00'	74.03'	45.88'	67.45'	S 24°32'54" E
C28	53°51'33"	50.00'	51.36'	28.21'	49.14'	N 83°36'24" E
C29	53°07'48"	50.00'	46.36'	25.00'	44.72'	N 27°36'44" E
C30	00°41'15"	375.00'	4.50'	2.25'	4.50'	N 34°28'37" W
C31	44°02'55"	25.00'	19.22'	10.11'	16.75'	S 58°09'27" E
C32	79°13'44"	50.00'	89.14'	41.38'	83.76'	N 38°34'02" W
C33	11°13'17"	375.00'	73.44'	36.84'	73.33'	N 40°25'53" W
C34	11°17'13"	375.00'	73.87'	37.08'	73.75'	N 13°28'22" E
C35	76°26'43"	25.00'	33.36'	19.99'	30.94'	S 19°06'23" E
C36	11°17'13"	375.00'	73.87'	37.08'	73.75'	N 51°41'08" W
C37	16°52'51"	223.05'	65.72'	33.11'	65.48'	N 17°27'55" W
C38	16°51'32"	223.05'	65.63'	33.05'	65.39'	N 34°20'07" W
C39	13°2'18"	223.05'	62.70'	26.48'	62.56'	N 49°32'02" W
C40	04°08'09"	325.00'	23.46'	11.73'	23.45'	N 58°22'16" W
C41	12°03'36"	325.00'	68.41'	34.33'	68.28'	N 66°28'08" W
C42	81°47'12"	25.00'	35.89'	21.85'	32.73'	S 44°38'04" E
C43	13°01'45"	325.00'	73.90'	37.11'	73.75'	N 79°00'48" W
C44	03°38'02"	1626.89'	103.18'	51.61'	103.16'	S 84°26'31" W
C45	00°00'00"	25.00'	39.27'	25.00'	35.36'	N 41°15'32" E
C46	02°35'35"	1626.89'	73.63'	36.82'	73.62'	S 81°19'42" W
C47	02°35'35"	1626.89'	73.63'	36.82'	73.62'	S 78°44'07" W
C48	02°35'35"	1626.89'	73.63'	36.82'	73.62'	S 78°08'32" W
C49	02°35'35"	1626.89'	73.63'	36.82'	73.62'	S 73°32'57" W
C50	02°35'35"	1626.89'	73.63'	36.82'	73.62'	S 70°57'22" W
C51	02°35'35"	1626.89'	73.63'	36.82'	73.62'	S 68°21'47" W
C52	02°38'03"	1626.89'	73.85'	36.83'	73.84'	S 65°45'58" W
C53	02°35'37"	1626.89'	73.64'	36.83'	73.64'	S 63°10'08" W
C54	00°52'23"	1626.89'	24.79'	12.40'	24.79'	S 81°28'08" W
C55	13°47'01"	360.00'	86.81'	43.51'	86.40'	N 26°01'23" W
C56	99°52'11"	25.00'	43.58'	29.73'	38.27'	S 69°03'58" E
C57	11°07'35"	360.00'	89.91'	45.08'	89.80'	N 38°28'41" W
C58	59°09'11"	50.00'	51.62'	28.38'	49.36'	N 30°36'04" W
C59	43°52'52"	25.00'	19.15'	10.07'	18.68'	S 22°57'55" E
C60	00°51'52"	330.00'	5.43'	2.72'	5.43'	N 44°28'26" W
C61	53°07'48"	50.00'	46.36'	25.00'	44.72'	N 86°44'34" W
C62	53°07'48"	50.00'	46.36'	25.00'	44.72'	S 40°07'38" W
C63	53°07'48"	50.00'	46.36'	25.00'	44.72'	S 13°00'10" E
C64	05°32'10"	310.00'	51.60'	25.88'	51.54'	N 38°41'07" W
C65	53°35'22"	25.00'	23.38'	12.63'	22.54'	N 70°14'53" W
C66	57°20'30"	50.00'	50.16'	27.42'	48.08'	S 68°18'19" E
C67	09°32'44"	275.00'	45.82'	22.96'	45.76'	N 65°48'19" E
C68	79°59'57"	25.00'	34.91'	20.98'	32.14'	N 20°59'58" E
C69	14°55'02"	310.00'	80.71'	40.58'	80.48'	N 26°27'31" W
C70	20°44'09"	275.00'	99.53'	50.31'	98.99'	N 80°54'46" E
C71	03°28'00"	275.00'	16.65'	8.33'	16.64'	S 86°59'07" E
C72	10°23'37"	155.00'	28.12'	14.10'	28.08'	S 80°03'15" E
C73	37°40'15"	155.00'	101.91'	52.87'	100.08'	S 56°01'19" E
C74	08°44'55"	205.00'	31.30'	15.66'	31.27'	S 41°33'39" E
C75	07°00'17"	205.00'	25.08'	12.55'	25.05'	S 49°26'16" E
C76	17°54'37"	205.00'	64.08'	32.30'	63.82'	S 61°53'42" E
C77	08°48'08"	205.00'	31.49'	15.78'	31.46'	S 80°51'00" E
C78	11°43'08"	325.00'	66.47'	33.35'	66.36'	N 88°53'22" E
C79	12°18'04"	325.00'	69.78'	35.02'	69.64'	N 76°52'46" E
C80	10°55'47"	337.84'	64.45'	32.32'	64.35'	N 33°55'09" W

CURVE	DELTA ANGLE	RADIUS	ARC LENGTH	TANGENT	CHORD LENGTH	CHORD BEARING
C81	90°32'47"	25.00'	39.51'	25.24'	35.52'	N 73°43'40" W
C82	09°43'47"	325.00'	55.19'	27.86'	55.12'	N 65°51'50" E
C83	89°12'57"	25.00'	38.93'	24.66'	35.11'	S 16°23'28" W
C84	11°10'03"	277.84'	54.15'	27.16'	54.07'	N 33°48'01" W
C85	00°34'19"	1576.89'	15.74'	7.67'	15.74'	S 81°17'06" W
C86	02°48'49"	1576.89'	76.52'	38.27'	76.51'	S 62°57'40" W
C87	02°47'33"	1576.89'	76.85'	38.43'	76.85'	S 65°44'51" W
C88	02°50'00"	1576.89'	77.98'	39.00'	77.97'	S 68°33'37" W
C89	02°50'00"	1576.89'	77.90'	39.00'	77.97'	S 71°23'37" W
C90	02°50'12"	1576.89'	78.07'	39.04'	78.06'	S 74°13'43" W
C91	02°50'00"	1576.89'	77.98'	39.00'	77.97'	S 77°03'49" W
C92	02°50'25"	1576.89'	78.17'	39.09'	78.16'	S 79°54'02" W
C93	02°50'00"	1576.89'	77.98'	39.00'	77.97'	S 82°44'14" W
C94	02°08'18"	1576.89'	57.93'	28.97'	57.93'	S 85°12'23" W
C95	14°08'24"	275.00'	67.87'	34.11'	67.69'	N 86°40'18" W
C96	22°28'21"	275.00'	107.66'	54.63'	107.17'	N 68°21'54" W
C97	12°53'36"	173.05'	38.94'	19.55'	38.66'	N 49°51'23" W
C98	00°49'52"	275.00'	3.96'	1.98'	3.96'	N 56°42'57" W
C99	16°25'00"	325.00'	93.12'	46.88'	92.80'	N 19°29'30" E
C100	16°25'00"	325.00'	93.12'	46.88'	92.80'	N 35°54'30" E
C101	16°25'00"	325.00'	93.12'	46.88'	92.80'	N 52°19'30" E
C102	16°25'00"	325.00'	93.12'	46.88'	92.80'	N 68°44'30" E
C103	16°25'00"	325.00'	93.12'	46.88'	92.80'	N 85°09'30" E
C104	02°55'53"	450.00'	23.02'	11.51'	23.02'	N 77°26'17" W
C105	10°39'39"	325.00'	60.47'	30.32'	60.38'	S 01°18'10" E
C106	09°31'38"	450.00'	74.83'	37.50'	74.74'	N 83°40'03" W
C107	00°41'06"	1025.00'	12.25'	6.13'	12.25'	S 83°41'06" W
C108	07°32'29"	450.00'	59.23'	29.68'	59.19'	S 87°47'54" W
C109	04°05'36"	1025.00'	73.23'	36.63'	73.21'	S 81°17'45" W
C110	04°05'27"	1025.00'	73.18'	36.61'	73.17'	S 77°12'14" W
C111	04°05'27"	1025.00'	73.18'	36.61'	73.17'	S 73°08'47" W
C112	73°34'30"	25.00'	32.10'	18.69'	29.94'	S 76°10'18" E
C113	04°01'36"	1025.00'	72.04'	36.03'	72.02'	S 69°03'15" W
C114	04°04'09"	1025.00'	72.80'	36.41'	72.78'	S 58°50'04" W
C115	100°15'11"	25.00'	43.74'	29.93'	38.37'	N 10°44'33" E
C116	01°45'39"	1025.00'	31.50'	15.75'	31.50'	S 55°55'10" W
C117	05°10'31"	50.00'	45.60'	24.53'	44.04'	S 77°05'57" W
C118	13°11'23"	25.00'	21.03'	11.18'	20.41'	N 79°08'02" E
C119	53°12'46"	50.00'	46.44'	25.05'	44.99'	S 24°21'49" W
C120	53°12'46"	50.00'	46.44'	25.05'	44.99'	S 28°50'58" E
C121	53°12'46"	50.00'	46.44'	25.05'	44.79'	S 82°03'44" E
C122	48°11'23"	25.00'	21.03'	11.18'	20.41'	S 30°46'39" W
C123	50°38'25"	50.00'	44.19'	23.66'	42.77'	N 32°10'10" E
C124	02°25'53"	975.00'	41.37'	20.69'	41.37'	S 56°15'16" W
C125	78°39'14"	25.00'	34.32'	20.48'	31.69'	N 78°42'40" W
C126	04°29'30"	975.00'	76.44'	38.24'	76.42'	S 59°42'58" W
C127	14°51'51"	270.00'	70.05'	35.22'	69.85'	N 31°57'07" W
C128	25°15'35"	1576.89'	695.20'	353.34'	689.58'	N 73°37'44" E
C129	29°13'29"	325.00'	165.77'	84.73'	163.98'	S 70°54'56" E
C130	25°15'35"	1626.89'	717.24'	364.54'	711.45'	N 73°37'44" E
C131	92°44'39"	325.00'	526.07'	340.95'	470.49'	S 57°39'20" W
C132	37°28'17"	275.00'	179.69'	93.18'	176.51'	S 75°01'20" E
C133	70°25'55"	375.00'	460.98'	264.69'	432.49'	S 68°48'42" W
C134	27°22'46"	50.00'	241.19'	44.72'	66.67'	N 34°57'40" W
C135	48°03'52"	205.00'	171.97'	91.41'	166.97'	N 61°13'08" W
C136	48°03'52"	155.00'	130.03'	69.12'	126.25'	N 61°13'08" W
C137	33°45'00"	275.00'	161.98'	83.42'	159.60'	S 77°52'27" W
C138	33°45'00"	325.00'	191.44'	98.59'	188.69'	S 77°52'27" W
C139	27°01'05"	50.00'	240.87'	45.01'	66.90'	N 40°57'59" E
C140	25°46'28"	360.00'	161.85'	82.37'	160.58'	S 32°01'06" E
C141	24°27'12"	310.00'	132.31'	67.18'	131.30'	S 31°13

City of Williamsburg & County of James City  
 Circuit Court: This PLAT was recorded on  
 27 Feb 2003  
 at 2:04 AM P.M. PG 60-66  
 DOCUMENT # 030006189  
 BETSY B WOOLRIDGE, CLERK  
 Betsy B Woolridge Clerk

# 030006189

89 PAGE 62



STATE OF VIRGINIA COUNTY OF JAMES CITY  
 IN THE CLERK'S OFFICE OF THE CIRCUIT COURT OF THE  
 COUNTY OF JAMES CITY THIS 27 DAY OF February  
 2003, THE MAP SHOWN HEREON WAS PRESENTED AND ADMITTED  
 TO THE RECORD AS THE LAW DIRECTS. @ 204PM  
 TESTE: Betsy B Woolridge CLERK  
 PLAT BOOK 89 PAGE 60-66

#030006189

89 PAGE 63

STATE OF VIRGINIA COUNTY OF JAMES CITY  
IN THE CLERK'S OFFICE OF THE CIRCUIT COURT OF THE  
COUNTY OF JAMES CITY THIS 27 DAY OF February  
2003, THE MAP SHOWN HEREON WAS PRESENTED AND ADMITTED  
TO THE RECORD AS THE LAW DIRECTS. @ 2:04 PM

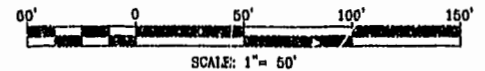
City of Williamsburg & County of James City  
Circuit Court: This PLAT was recorded on  
27 Feb 2003  
at 2:04 PM/PM. PB 89 PG 63/66  
DOCUMENT # 030006189  
BETSY B. WOOLRIDGE, CLERK  
Betsy B. Woolridge Clerk

NOTE "A": VARIABLE WIDTH J.C.S.A.  
UTILITY EASEMENT  
NOTE "C": PROPERTY LINE HEREBY  
EXTINGUISHED

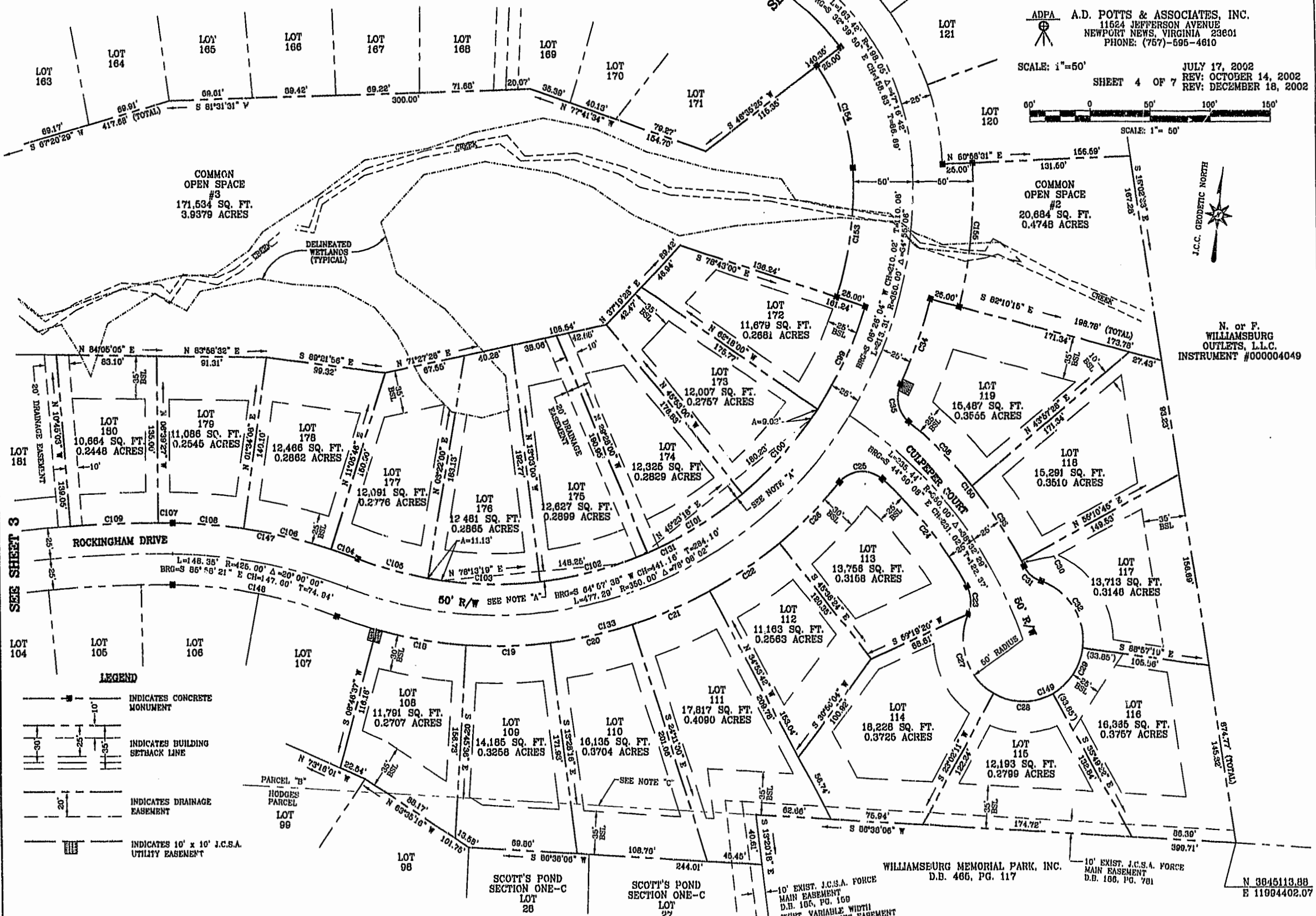
# SCOTT'S POND SECTION TWO POWHATAN DISTRICT JAMES CITY COUNTY, VIRGINIA

ADPA A.D. POTTS & ASSOCIATES, INC.  
11624 JEFFERSON AVENUE  
NEWPORT NEWS, VIRGINIA 23601  
PHONE: (757)-695-4610

SCALE: 1"=50'  
SHEET 4 OF 7  
JULY 17, 2002  
REV: OCTOBER 14, 2002  
REV: DECEMBER 18, 2002



N. or F.  
WILLIAMSBURG  
OUTLETS, L.L.C.  
INSTRUMENT #000004049



SEE SHEET 3

SEE SHEET 5

### LEGEND

- INDICATES CONCRETE MONUMENT
- INDICATES BUILDING SETBACK LINE
- INDICATES DRAINAGE EASEMENT
- INDICATES 10' x 10' J.C.S.A. UTILITY EASEMENT

SPREC2.DWG

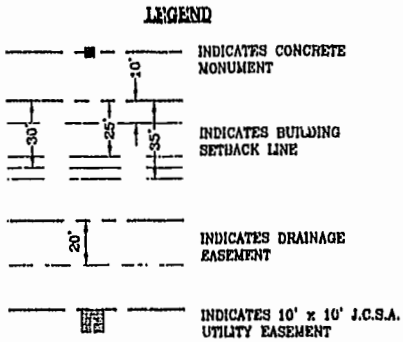
JOB NO. 02-328 FILE NO. 10-1021



#030006189

89 PAGE 64

# SCOTT'S POND SECTION TWO POWHATAN DISTRICT JAMES CITY COUNTY, VIRGINIA



NOTE "A": VARIABLE WIDTH J.C.S.A. UTILITY EASEMENT  
 NOTE "B": TEMPORARY CONSTRUCTION EASEMENT TO BE VACATED UPON COMPLETION OF THE EXTENSION OF SCOTT'S POND DRIVE

STATE OF VIRGINIA COUNTY OF JAMES CITY  
 IN THE CLERK'S OFFICE OF THE CIRCUIT COURT OF THE COUNTY OF JAMES CITY THIS 27 DAY OF February 2003, THE MAP SHOWN HEREON WAS PRESENTED AND ADMITTED TO THE RECORD AS THE LAW DIRECTS. @ 2:04 PM  
 TESTE: Gregory S. Woolridge CLERK

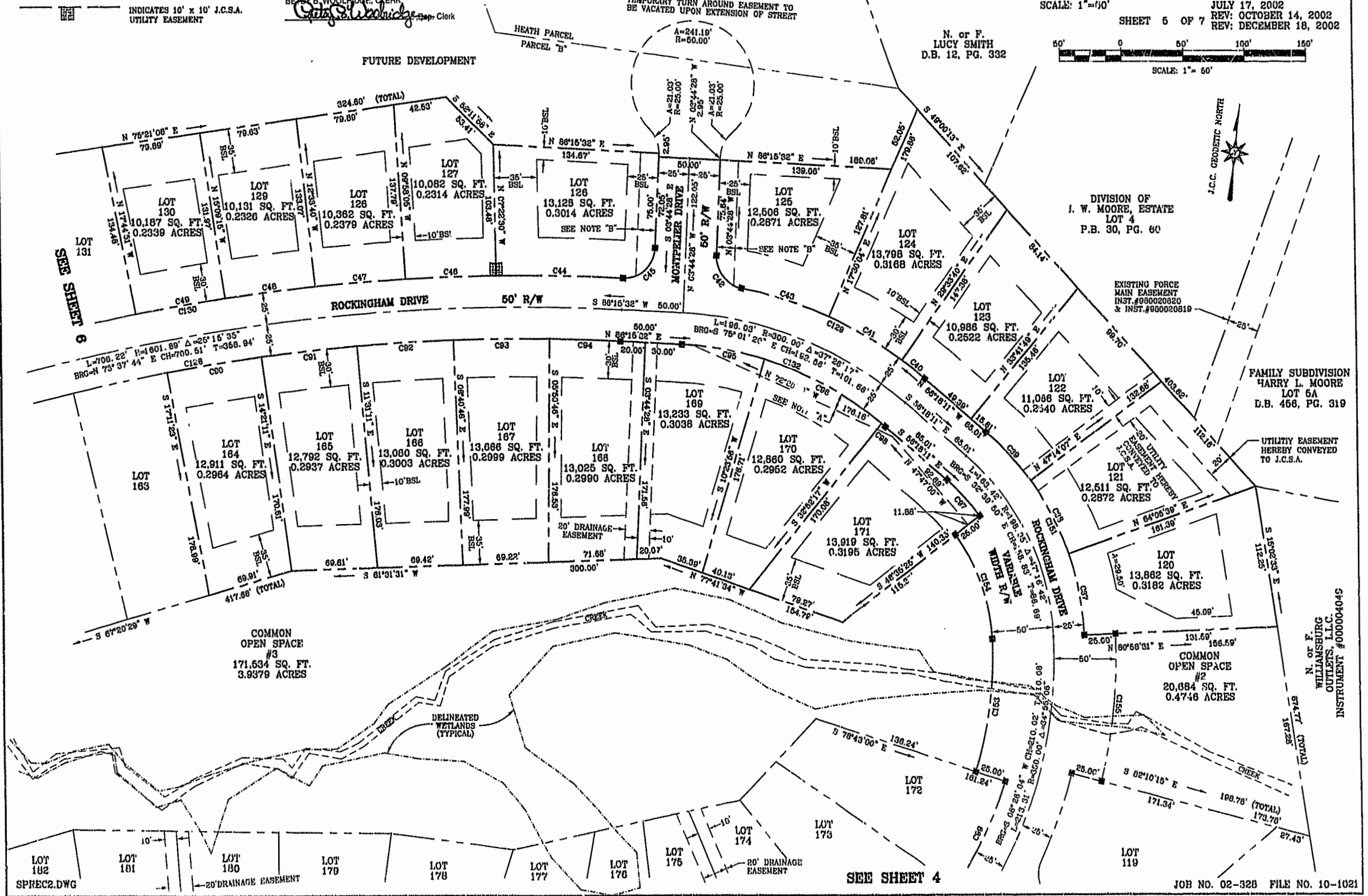
City of Williamsburg & County of James City Circuit Court: This PLAT was recorded on 27 February 2003 at 2:04 AM/PM, PB 687 P.02.66  
 DOCUMENT # 030006189  
 BEFAY B. WOOLRIDGE, CLERK  
Gregory S. Woolridge Dep. Clerk

PLAT BOOK 89 PAGE 60-66

FUTURE PUBLIC STREET EXTENSION  
 THIS RIGHT-OF-WAY IS PLATTED WITH THE INTENT OF BEING EXTENDED AND CONTINUED IN ORDER TO PROVIDE INGRESS AND EGRESS TO AND FROM FUTURE SUBDIVISIONS OR ADJACENT PROPERTY.  
 TEMPORARY TURN AROUND EASEMENT TO BE VACATED UPON EXTENSION OF STREET

ADFA A.D. POTTS & ASSOCIATES, INC.  
 11524 JEFFERSON AVENUE  
 NEWPORT NEWS, VIRGINIA 23601  
 PHONE: (757)-695-4610

SCALE: 1"=60'  
 SHEET 6 OF 7  
 JULY 17, 2002 REV: OCTOBER 14, 2002  
 REV: DECEMBER 18, 2002

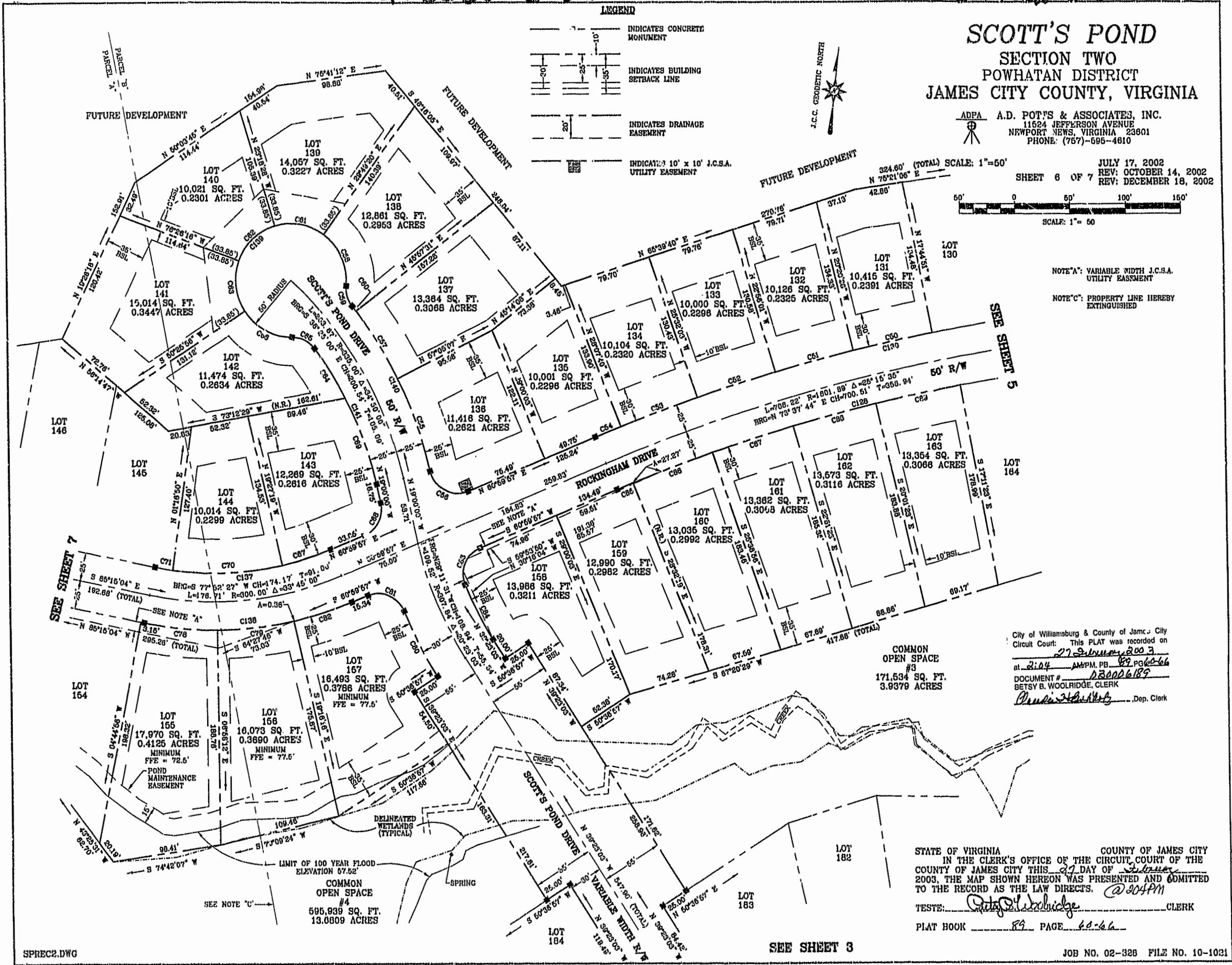


SPREC2.DWG

N. or F. WILLIAMSBURG OUTLETS, L.L.C.  
 INSTRUMENT #000004045

#030006189

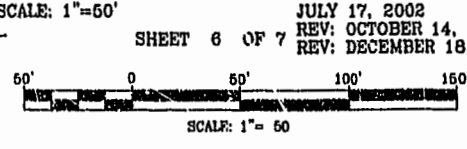
89 PAGE 65



**SCOTT'S POND**  
**SECTION TWO**  
**POWHATAN DISTRICT**  
**JAMES CITY COUNTY, VIRGINIA**

ADPA A.D. POTTS & ASSOCIATES, INC.  
 11624 JEFFERSON AVENUE  
 NEWPORT NEWS, VIRGINIA 23601  
 PHONE: (757)-695-4610

JULY 17, 2002  
 SHEET 6 OF 7  
 REV: OCTOBER 14, 2002  
 REV: DECEMBER 18, 2002



NOTE "A": VARIABLE WIDTH J.C.S.A. UTILITY EASEMENT  
 NOTE "C": PROPERTY LINE HEREBY EXTINGUISHED

City of Williamsburg & County of James City  
 Circuit Court: This PLAT was recorded on  
 27 September 2003  
 at 2:04 AM PM, PB 89 pg 60-66  
 DOCUMENT # 030006189  
 BETSY B. WOOLRIDGE, CLERK  
 Betsy Woolridge, Dep. Clerk

STATE OF VIRGINIA COUNTY OF JAMES CITY  
 IN THE CLERK'S OFFICE OF THE CIRCUIT COURT OF THE  
 COUNTY OF JAMES CITY THIS 27 DAY OF September  
 2003, THE MAP SHOWN HEREON WAS PRESENTED AND ADMITTED  
 TO THE RECORD AS THE LAW DIRECTS. @ 2:04 PM  
 TESTE: Betsy Woolridge CLERK  
 PLAT BOOK 89 PAGE 60-66

# 030006189

89 PAGE 66

STATE OF VIRGINIA COUNTY OF JAMES CITY  
IN THE CLERK'S OFFICE OF THE CIRCUIT COURT OF THE  
COUNTY OF JAMES CITY THIS 21 DAY OF February  
2003, THE MAP SHOWN HEREON WAS PRESENTED AND ADMITTED  
TO THE RECORD AS THE LAW DIRECTS. @ 2:04 PM

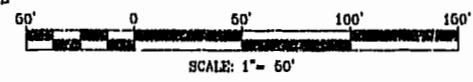
TESTE: Betsy B. Woolridge CLERK  
PLAT BOOK 89 PAGE 60-66

NOTE "A": VARIABLE WIDTH J.C.S.A.  
UTILITY EASEMENT  
NOTE "D": TEMPORARY CONSTRUCTION EASEMENT  
TO BE VACATED UPON COMPLETION  
OF THE EXTENSION OF SCOTT'S POND  
DRIVE

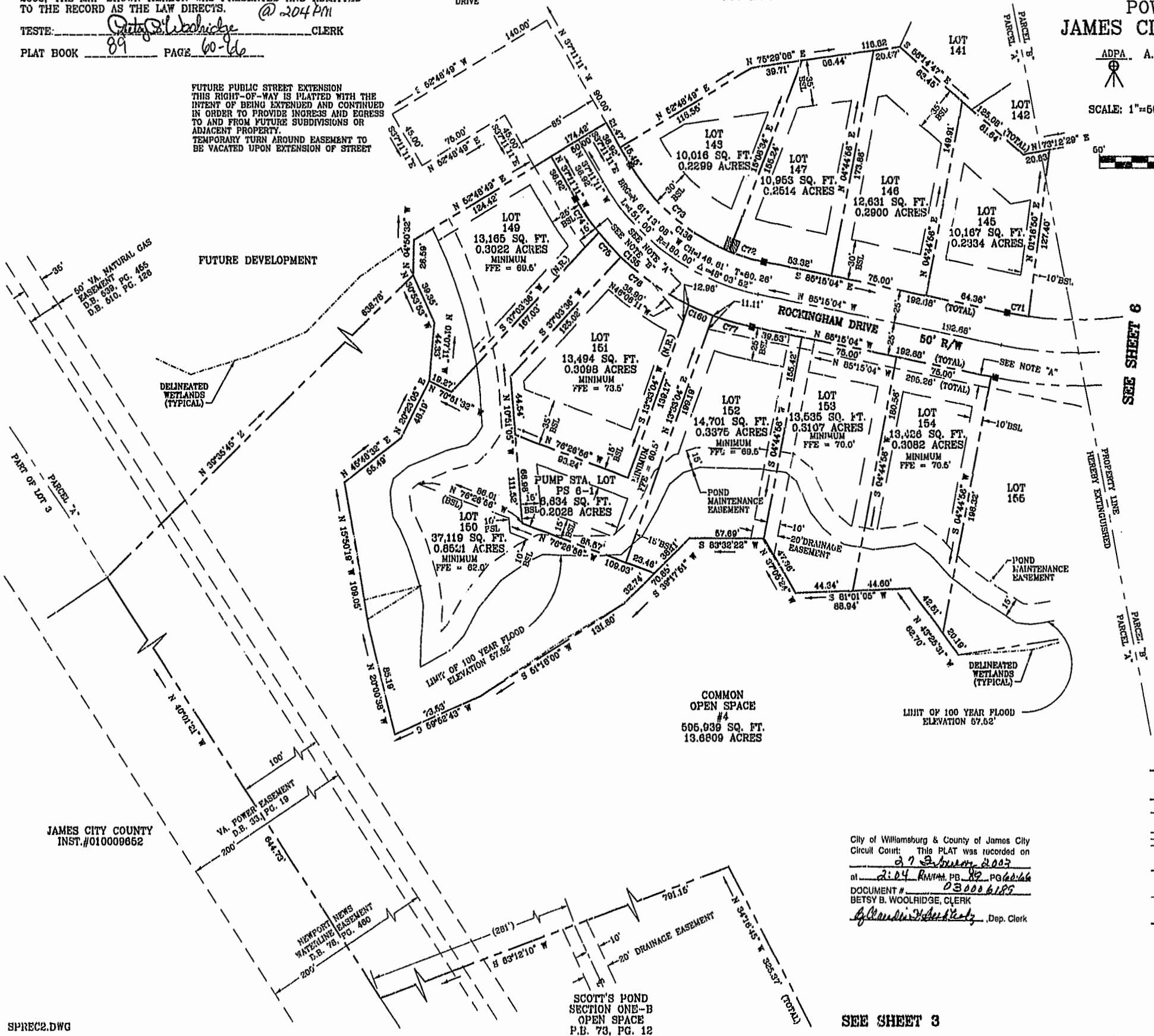
# SCOTT'S POND SECTION TWO POWHATAN DISTRICT JAMES CITY COUNTY, VIRGINIA

ADPA A.D. POTTS & ASSOCIATES, INC.  
11624 JEFFERSON AVENUE  
NEWPORT NEWS, VIRGINIA 23601  
PHONE: (757)-595-4610

SCALE: 1"=50' JULY 17, 2002  
SHEET 7 OF 7 REV: OCTOBER 14, 2002  
REV: DECEMBER 18, 2002



FUTURE PUBLIC STREET EXTENSION  
THIS RIGHT-OF-WAY IS PLATTED WITH THE  
INTENT OF BEING EXTENDED AND CONTINUED  
IN ORDER TO PROVIDE INGRESS AND EGRESS  
TO AND FROM FUTURE SUBDIVISIONS OR  
ADJACENT PROPERTY.  
TEMPORARY TURN AROUND EASEMENT TO  
BE VACATED UPON EXTENSION OF STREET



SEE SHEET 6

PROPERTY LINE  
HEREBY EXTINGUISHED

COMMON  
OPEN SPACE  
#4  
505,939 SQ. FT.  
13.6809 ACRES

LIMIT OF 100 YEAR FLOOD  
ELEVATION 67.62'

JAMES CITY COUNTY  
INST.#010009652

VA. POWER EASEMENT  
D.B. 531 PG. 19

NEWPORT NEWS  
WATERLINE EASEMENT  
D.B. 78

SCOTT'S POND  
SECTION ONE-B  
OPEN SPACE  
P.B. 73, PG. 12

City of Williamsburg & County of James City  
Circuit Court: This PLAT was recorded on  
27 February 2003  
at 2:04 PM, P.B. 89, P.G. 66  
DOCUMENT # 030006189  
BETSY B. WOOLRIDGE, CLERK  
Betsy B. Woolridge, Dep. Clerk

**LEGEND**

	INDICATES CONCRETE MONUMENT
	INDICATES BUILDING SETBACK LINE
	INDICATES DRAINAGE EASEMENT
	INDICATES 10' x 10' J.C.S.A. UTILITY EASEMENT

SEE SHEET 3

JOB NO. 02-320 FILE NO. 10-1021

SPREC2.DWG