

NATURAL OPEN SPACE AND CONSERVATION AREA

ROLLING WOODS (I.A.B. 46, PG. 81)

PROPERTY LINE IS C/L STREAM



100 50 0 100 200
 scale feet

City of Williamsburg & County of James City
 Circuit Court: This PLAT was recorded on
 22 January 2003
 at 9:20 AM PM-PB 081 PG.27+38
 DOCUMENT # 030001976
 BETTY B. WOOLFIDGE, CLERK
 Betty B. Woolfidge, Sup. Clerk

EXHIBIT 1
 TO DEED OF EASEMENT
 FOR NATURAL OPEN SPACE
 AND CONSERVATION AREA
 LAKE POWELL FOREST
 JAMESTOWN MAGISTERIAL DISTRICT
 JAMES CITY COUNTY, VIRGINIA
 SCALE: 1" = 100' DEC. 19, 2002
 HORTON & DODD, P.C.
 SURVEYORS, ENGINEERS & PLANNERS
 300 GEORGE WASHINGTON HWY. N.
 CHESAPEAKE, VIRGINIA
 (757) 461-4333

COPYRIGHT (c), HORTON & DODD, P.C. ALL RIGHTS RESERVED. REPRODUCTION OR USE OF THE CONTENTS OF THIS DOCUMENT, OR ADDITIONS OR DELETIONS TO THIS DOCUMENT, IN WHOLE OR IN PART, WITHOUT WRITTEN CONSENT OF HORTON & DODD, P.C. IS PROHIBITED.

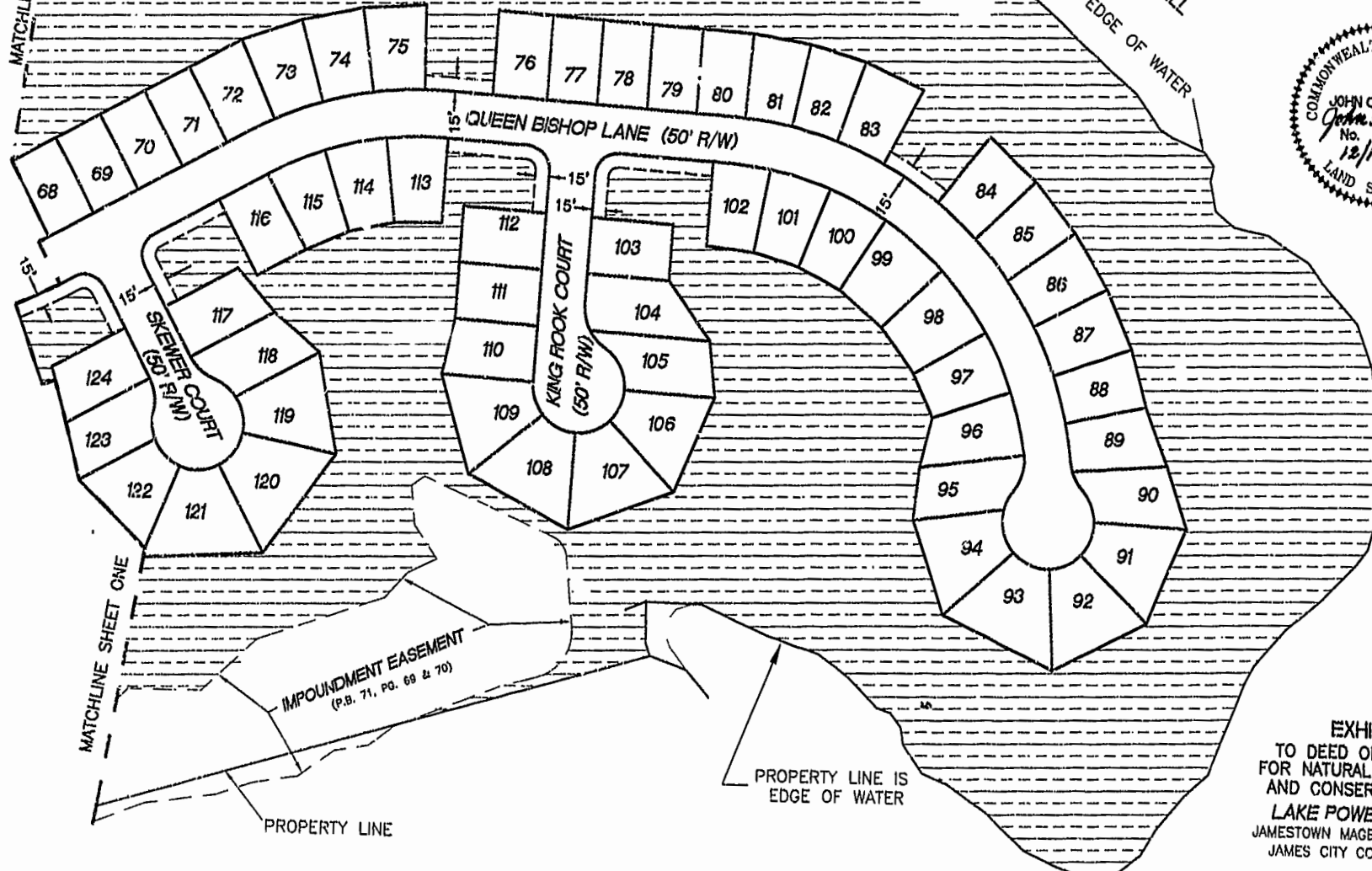
PROPERTY LINE IS C/L STREAM
ROLLING WOODS
(M.B. 46, PG. 81)

NATURAL OPEN SPACE AND
CONSERVATION AREA

P.B. 16, PG. 20

MATCHLINE SHEET ONE

PROPERTY LINE IS EDGE OF WATER
LAKE POWELL



IMPOUNDMENT EASEMENT
(P.B. 71, PG. 69 & 70)

PROPERTY LINE IS
EDGE OF WATER

EXHIBIT 1
TO DEED OF EASEMENT
FOR NATURAL OPEN SPACE
AND CONSERVATION AREA
LAKE POWELL FOREST
JAMESTOWN MAGISTERIAL DISTRICT
JAMES CITY COUNTY, VIRGINIA



NOW OR FORMERLY
LAKE POWELL POINTE SUBDIVISION

City of Williamsburg & County of James City
Circuit Court: This PLAT was recorded on
22 January 2003
at *2:20* AM P.M. P.B. *810* PG. *27+28*
DOCUMENT # *030001976*
HELSY B. WOOLRIDGE, CLERK
Helsy B. Woolridge, Dep. Clerk

SHEET 2 OF 2

SCALE : 1" = 100' DEC. 19, 2002
Horton & Dodd, P.C.
SURVEYORS, ENGINEERS & PLANNERS
300 GEORGE WASHINGTON HWY. N.
CHESAPEAKE, VIRGINIA
(757) 481-4535 www.hortondodd.com
COPYRIGHT (c), HORTON & DODD, P.C. ALL RIGHTS RESERVED. REPRODUCTION OR USE OF THE CONTENTS OF THIS DOCUMENT, OR ADDITIONS OR DELETIONS TO THIS DOCUMENT, IN WHOLE OR IN PART, WITHOUT WRITTEN CONSENT OF HORTON & DODD, P.C. IS PROHIBITED.