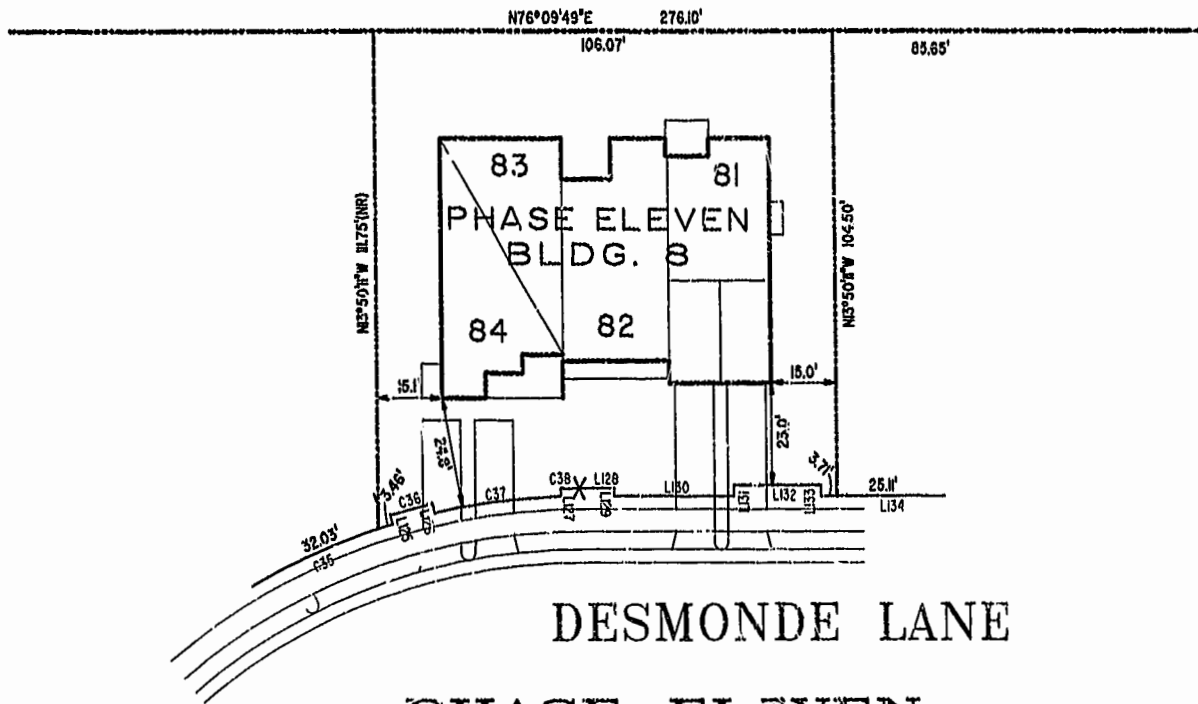
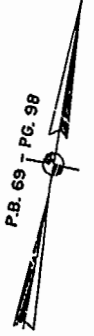
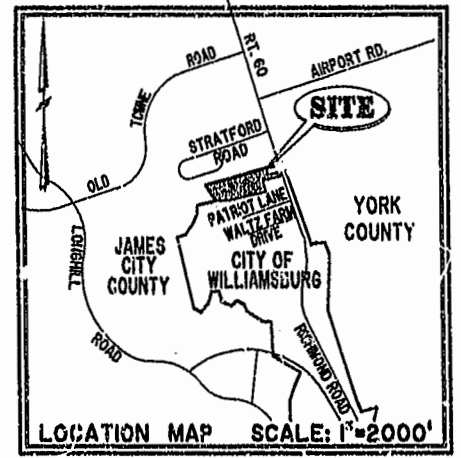


#022260

88 PAGE 87

NOTES:
 1. THE TOTAL AREA OF SITE IS 644,266 SQ.FT. (14.790 AC.) OF WHICH 327,462 SQ.FT. (7.517 AC.) IS ADDITIONAL LAND.
 2. THE AREA OF THE SUBMITTED LAND IS 316,804 SQ.FT. (7.273 AC.)
 3. THE COMMON AREA IS TO BE THE RESPONSIBILITY OF THE CONDOMINIUM ASSOCIATION AND HAS A TOTAL AREA OF 4.436 AC.

BUILDING NUMBER	UNIT NUMBER	UNIT TYPE	STREET ADDRESS
8	8-81	D	81 DESMONDE LANE
8	8-82	C	82 DESMONDE LANE
8	8-83	A3	83 DESMONDE LANE
8	8-84	E3	84 DESMONDE LANE

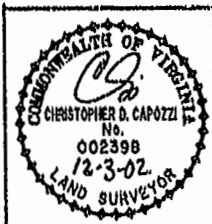


DESMONDE LANE
 PHASE ELEVEN
 BLDG. 8
 AREA = 11,105 SQ. FT. = 0.255 AC.
 SCALE: 1" = 25'

I CHRISTOPHER D. CAPOZZI, A CERTIFIED LAND SURVEYOR, DO HEREBY CERTIFY THAT THIS PLAT IS ACCURATE, AND THAT IT COMPLIES WITH THE PROVISIONS OF SECTION 55 - 79.58A OF THE CODE OF VIRGINIA. I FURTHER HEREBY CERTIFY THAT ALL UNITS OR PORTIONS THEREOF DEPICTED HEREON HAVE BEEN SUBSTANTIALLY COMPLETED.

THE UNDERSIGNED CERTIFIED LAND SURVEYOR CERTIFIES THAT HE HAS READ SECTION 55 - 79.58B OF THE CODE OF VIRGINIA, AND FINDS THESE PLANS TO BE ACCURATE AND IN COMPLIANCE WITH THE CODE. I FURTHER CERTIFY THAT ALL UNITS OR PORTIONS THEREOF DEPICTED HEREON HAVE BEEN SUBSTANTIALLY COMPLETED.

12-3-02
 DATE CHRISTOPHER D. CAPOZZI, VA L.S. No. 002398



Hassell & Folkes, P.C.
 Engineers Surveyors Planners
 325 Volvo Parkway
 Chesapeake, VA 23320
 (757) 547-9531

DRAWN BY:	DATE
HJS	11/27/02
COMP BY:	DATE
HBA	10/01/02
CHECKED BY:	DATE
HBA	12/02/02

EXHIBIT "A"			
CLAIBORNE			
(A CONDOMINIUM COMMUNITY)			
PHASE ELEVEN			
CITY OF WILLIAMSBURG,		VIRGINIA	
SIZE	CONTRACT NO.	FILE NAME	REV.
C	9032	3\PLATS\CL\CLBORNE\PH-E-BLDG-8.DWG	
SCALE: N/A		DATE: 11/27/02	SHEET 1 of 6

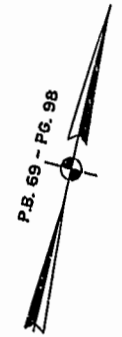
City of Williamsburg & County of James City Circuit Court: This PLAT was recorded on 12 Dec. 2002 at 11:34 AM/PM-PB 88 PG 87-91 DOCUMENT # 022260 BETSY B. WOOLRIDGE, CLERK
Betsy B. Woolridge, Dep. Clerk

A-1520

A-1520

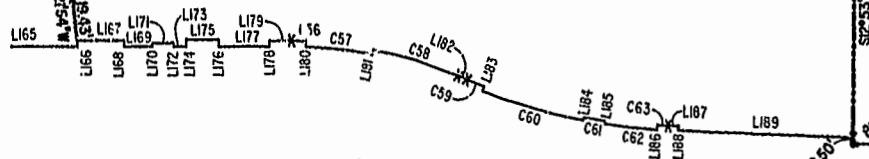
JAMES CITY COUNTY TP 33-3-01-29
NOW OR FORMERLY
GARY E. & CATHY L. NESTER
D.B.619 P.683

JAMES CITY COUNTY TP 33-3-01-24
NOW OR FORMERLY
GOLDEN KNIGHTS, INC.
D.B.568 P.316



MATCH LINE
SEE SHEET 3

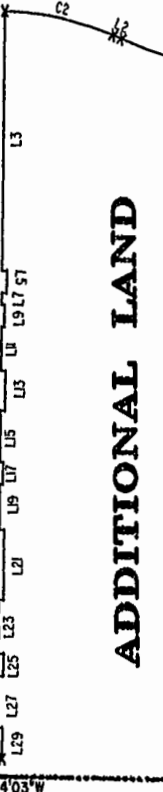
ADDITIONAL LAND



MATCH LINE

SEE SHEET 3

RAVEN TERRACE
VAR. WIDTH UTILITY & INGRESS/EGRESS ESMT.
COMMON AREA



ADDITIONAL LAND

CLAIBORNE DRIVE
VAR. WIDTH UTILITY & INGRESS/EGRESS ESMT.
COMMON AREA

CHELSEA GCA REALTY PARTNERSHIP, L.P.
TP 202-04-00-001
NOW OR FORMERLY
D.B.105 P.467

DETAIL
N.T.S.



TP 252-01-00-010

TP 252-01-00-009
NOW OR FORMERLY
MARK II INVESTMENTS LTD.
D.B.130 P.671

TP 252-01-00-008

COMMON AREA - PHASE ONE

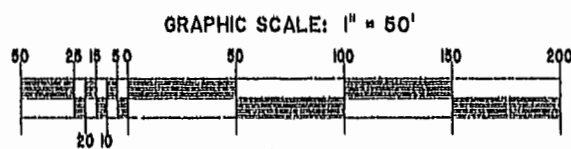
TP 202-05-00-001
NOW OR FORMERLY
CHELSEA GCA REALTY PARTNERSHIP, L.P.
D.B.113 P.693

TP 202-08-00-001
NOW OR FORMERLY
752 L.L.C.
INST. #900305

U.S. RTE. 60
RICHMOND ROAD
P.B. 69 - PG. 98

City of Williamsburg & County of James City
Circuit Court: This PLAT was recorded on
12 Dec 2002
at 11:24 AM/PM; PB 88 PG 87-91
DOCUMENT # 022260
BETSY B. WOOLFRIDGE, CLERK
Betsy Woolfidge Dep. Clerk

EXHIBIT "A"
CLAIBORNE
(A CONDOMINIUM COMMUNITY)
PHASE ELEVEN



Hassell & Folkes, P.C. Engineers Surveyors Planners Chesapeake, VA 23320 (757)547-9531	SCALE: 1" = 60'	DATE: 11/27/02	SHEET 2 of 8
---	-----------------	----------------	--------------

#022260

88 PAGE 89

JAMES CITY COUNTY TP 33-3-01-27
NOW OR FORMERLY
ARTCRAFT - STRATFORD, L.C.
D.B. 649 P. 470

JAMES CITY COUNTY TP 33-3-01-28
NOW OR FORMERLY
GARY E. & CATHY L. NESTER
D.B. 509 P. 735

JAMES CITY COUNTY TP 33-3-01-29
NOW OR FORMERLY
GARY E. & CATHY L. NESTER
D.B. 619 P. 683

PHASE ELEVEN

BLDG. 8
SEE DETAIL ON SHEET 1

ADDITIONAL LAND

DESMONDE LANE
COMMON AREA
VAR. WIDTH UTILITY & INGRESS/EGRESS ESMT.

CLAIBORNE DRIVE

ADDITIONAL LAND

ADDITIONAL LAND

SEE SHEET 2
RAVEN TERRACE

MATCH LINE
SEE SHEET 4

MATCH LINE
SEE SHEET 2

MATCH LINE
SEE SHEET 4

MATCH LINE

City of Williamsburg & County of James City
Circuit Court: This PLAT was recorded on
12 Dec 2002
at 11:34 AM/PM/PB EL PG 87-91
DOCUMENT # 022260
BY Sybil B. Woolridge CLERK

EXHIBIT "A"
CLAIBORNE
(A CONDOMINIUM COMMUNITY)
PHASE ELEVEN

TP 202-08-00-001
NOW OR FORMERLY
752 L.L.C.
INST. #980305

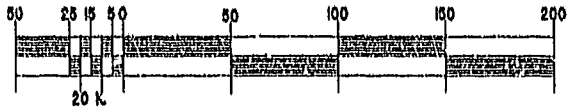
TP 281-10-00-B
NOW OR FORMERLY
752 L.L.C.
INST. #980305

TP 282-08-00-001
NOW OR FORMERLY
752 L.L.C.
INST. #980305

TP 281-10-00-B
NOW OR FORMERLY
752 L.L.C.
INST. #980305



GRAPHIC SCALE: 1" = 50'



Hassell & Folkes, P.C. Engineers Surveyors Planners Chesapeake, VA 23320 (757) 547-9531	SIZE	CONTRACT NO	FILE NAME	REV.
	C		S\PLATS\CLANDORNE\PH11-BLDG-0280	
SCALE: 1" = 50'		DATE: 11/27/02	SHEET 3 of 8	

A-1520

A-1520

#022260

88 PAGE 90

JAMES CITY COUNTY TP 33-3-01-27
NOW OR FORMERLY
ARTCRAFT - STRATFORD, L.C.
D.B. 649 P. 470

CITY OF WILLIAMSBURG CORPORATE LIMITS
JAMES CITY COUNTY CORPORATE LIMITS

JAMES CITY COUNTY TP 33-3-01-30
NOW OR FORMERLY
PHILIP RICHARDSON CO., INC.
P.B. 69 P. 98
INST. #980012581

TP 281-03-00-A
NOW OR FORMERLY
SALAH & CHANG TURKMANI
D.B. 94 P. 92

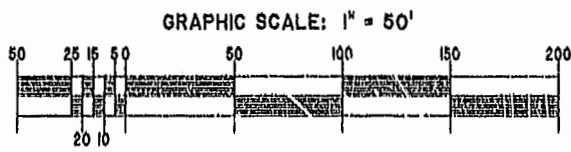
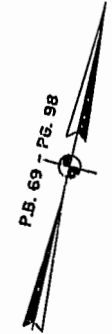
TP 281-10-00-B
NOW OR FORMERLY
752 L.L.C.
INST. #980305

City of Williamsburg & County of James City
Circuit Court: This Plat was recorded on
12 Nov 2002
at 11:34 AM/DM: PB 88 PG 97-91
DOCUMENT # 022260
PERRY B. WOODRIDGE, CLERK
Perry B. Woodridge Dep. Clerk

EXHIBIT "A"
CLAIBORNE
(A CONDOMINIUM COMMUNITY)
PHASE ELEVEN

CITY OF WILLIAMSBURG, VIRGINIA

Hassell & Folkes, P.C. Engineers Surveyors Planners Chesapeake, VA 23320 (757) 547-9531	SIZE C	CONTRACT NO C	FILE NAME S:\PLATS\CL\WILLIAMSBURG\PH11-BLDG-B-000	REV.
SCALE: 1" = 80'	DATE: 11/27/02	SHEET 4 of 5		



A-1520

A-1520

#022260

88 PAGE 91

LINE TABLE - UTILITY & INGRESS/EGRESS EASEMENT

CURVE TABLE - UTILITY & INGRESS/EGRESS EASEMENT

Table with columns: LINE, BEARING, DISTANCE. Rows L1 to L77.

Table with columns: LINE, BEARING, DISTANCE. Rows L78 to L154.

Table with columns: LINE, BEARING, DISTANCE. Rows L155 to L192.

Table with columns: CURVE, RADIUS, ARC LENGTH, DELTA ANGLE, TANGENT, CHORD BEARING, LENGTH. Rows C1 to C63.

EXHIBIT "A"
CLAIBORNE
(A CONDOMINIUM COMMUNITY)
PHASE ELEVEN

City of Williamsburg & County of James City
Circuit Court: This PLAT was recorded on
12 Nov 2002
at 11:34 AM, Vol. 88, PG 81-91
DOCUMENT # 122260
Doris H. Woodruff, Clerk



Table with columns: Hassell & Folkes, P.C., SIZE, CONTRACT NO., FILE NAME, REV., SCALE, DATE, SHEET 5 of 5.