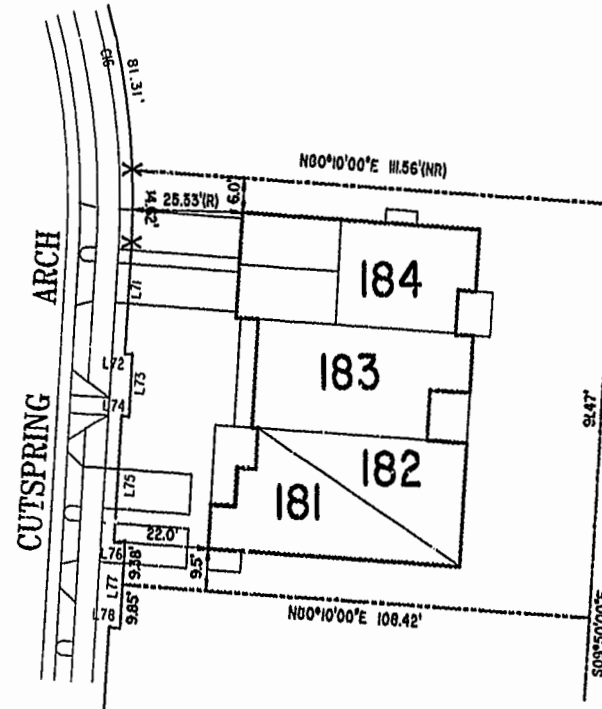
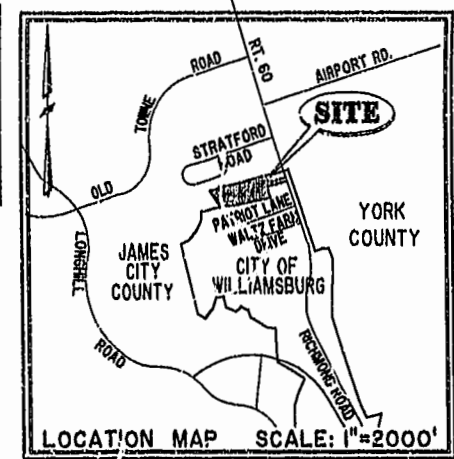


NOTES:

1. THE TOTAL AREA OF SITE IS 644,256 SQ.FT. (14.790 AC.) OF WHICH 338,557 SQ.FT. (7.772 AC.) IS ADDITIONAL LAND.
2. THE AREA OF THE SUBMITTED LAND IS 305,699 SQ.FT. (7.018 AC.)
3. THE COMMON AREA IS TO BE THE RESPONSIBILITY OF THE CONDOMINIUM ASSOCIATION AND HAS A TOTAL AREA OF 4.436 AC.



BUILDING NUMBER	UNIT NUMBER	UNIT TYPE	STREET ADDRESS
18	18-181	E3	181 CUTSPRING ARCH
18	18-182	A3	182 CUTSPRING ARCH
18	18-183	C	183 CUTSPRING ARCH
18	18-184	D	184 CUTSPRING ARCH



**PHASE TEN
BLDG. 18**

AREA = 10,104 SQ. FT. = 0.232 AC.

SCALE: 1" = 25'

City of Williamsburg & County of James City
Circuit Court: This PLAT was recorded on
10 Dec 2002

at 11:16 AM/PM, PG. 88 PG. 84

DOCUMENT # 022234

BETSY B. WOOLRIDGE, CLERK
Betsy Woolridge, Dep. Clerk

I CHRISTOPHER D. CAPOZZI, A CERTIFIED LAND SURVEYOR, DO HEREBY CERTIFY THAT THIS PLAT IS ACCURATE, AND THAT IT COMPLIES WITH THE PROVISIONS OF SECTION 55 - 79.58A OF THE CODE OF VIRGINIA. I FURTHER HEREBY CERTIFY THAT ALL UNITS OR PORTIONS THEREOF DEPICTED HEREON HAVE BEEN SUBSTANTIALLY COMPLETED.

THE UNDERSIGNED CERTIFIED LAND SURVEYOR CERTIFIES THAT HE HAS READ SECTION 55 - 79.58B OF THE CODE OF VIRGINIA, AND FINDS THESE PLANS TO BE ACCURATE AND IN COMPLIANCE WITH THE CODE. I FURTHER CERTIFY THAT ALL UNITS OR PORTIONS THEREOF DEPICTED HEREON HAVE BEEN SUBSTANTIALLY COMPLETED.

12-2-02

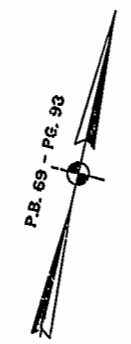
DATE

Christopher D. Capozzi
CHRISTOPHER D. CAPOZZI, VA L.S. No. 002398

		DRAWN BY: HJS	DATE: 11/18/02	EXHIBIT "A" CLAIBORNE (A CONDOMINIUM COMMUNITY) PHASE TEN CITY OF WILLIAMSBURG, VIRGINIA
		COMP BY: HBA	DATE: 10/01/02	
CHECKED BY: HBA	DATE: 11/19/02			
SIZE CONTRACT NO FILE NAME REV. C 98132 S:\PLATS\CLAIBORNE\PH-10-BLDG-18.DWG				
SCALE: N/A		DATE: 11/18/02	SHEET 1 of 5	

JAMES CITY COUNTY TP 33-3-01-29
NOW OR FORMERLY
GARY E. & CATHY L. NESTER
D.B.619 P.633

JAMES CITY COUNTY TP 33-3-01-24
NOW OR FORMERLY
GOLDEN KNIGHTS, INC.
D.B.568 P.316



MATCH LINE
SEE SHEET 3

ADDITIONAL LAND

L165 L166 L167 L168 L169 L170 L171 L172 L173 L174 L175 L176 L177 L178 L179 L180 L181 L182 L183 L184 L185 L186 L187 L188 L189 C56 C57 C58 C59 C60 C61 C62 C63 C64 C65 C66 C67 C68 C69 C70

MATCH LINE
SEE SHEET 3

SEE SHEET 3

RAVEN TERRACE
VAR. WIDTH UTILITY & INGRESS/EGRESS ESMT.
COMMON AREA

L30 L31 L32 L33 L34 L35 L36 L37 L38 L39 L40 L41 L42 L43 L44 L45 L46 L47 L48 L49 L50 L51 L52 L53 L54 L55 L56 L57 L58 L59 L60 L61 L62 L63 L64 L65 L66 L67 L68 L69 L70 L71 L72 L73 L74 L75 L76 L77 L78 L79 L80 L81 L82 L83 L84 L85 L86 L87 L88 L89 L90 L91 L92 L93 L94 L95 L96 L97 L98 L99 L100

ADDITIONAL LAND

TP 282-04-00-001
NOW OR FORMERLY
CHELSEA GCA REALTY PARTNERSHIP, L.P.
D.B.106 P.407

MARK II INVESTMENTS LTD.
D.B.130 P.671

TP 252-01-00-008
N78°27'47"E 321.22'

CLAIBORNE DRIVE
VAR. WIDTH UTILITY & INGRESS/EGRESS ESMT.
COMMON AREA

TP 202-05-00-001
NOW OR FORMERLY
CHELSEA GCA REALTY PARTNERSHIP, L.P.
D.B.113 P.693

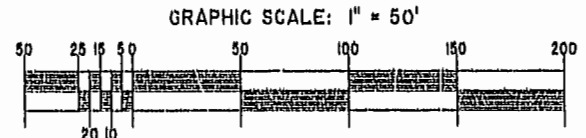
U.S. RTE. 60
RICHMOND ROAD

P.B. 69 - PG. 98

DETAIL
N.T.S.

City of Williamsburg & County of James City
Circuit Court: This PLAT was recorded on
10 Dec 2002
at 11:16 AM/PM, PB 88, page 88-84
DOCUMENT # 022234
BETSY B. WOOLRIDGE, CLERK
Betsy Woolridge, Esq. Clerk

EXHIBIT "A"
CLAIBORNE
(A CONDOMINIUM COMMUNITY)
PHASE TEN

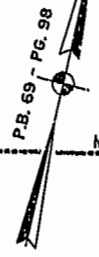


Hassell & Folkes, P.C. Engineers Surveyors Planners Chesapeake, VA 23320 (757) 547-9531	SIZE C	CONTRACT NO.	FILE NAME S:\PLATS\CLAI\CLAI010-10-01-10-000	REV.
SCALE: 1" = 50'		DATE: 11/18/02	SHEET 2 of 5	

JAMES CITY COUNTY TP 33-3-01-27
NOW OR FORMERLY
ARTCRAFT - STRATFORD, L.C.
D.B. 649 P. 470

JAMES CITY COUNTY TP 33-3-01-28
NOW OR FORMERLY
GARY E. & CATHY L. NESTER
D.D. 509 P. 735

JAMES CITY COUNTY TP 33-3-01-29
NOW OR FORMERLY
GARY E. & CATHY L. NESTER
D.B. 619 P. 683

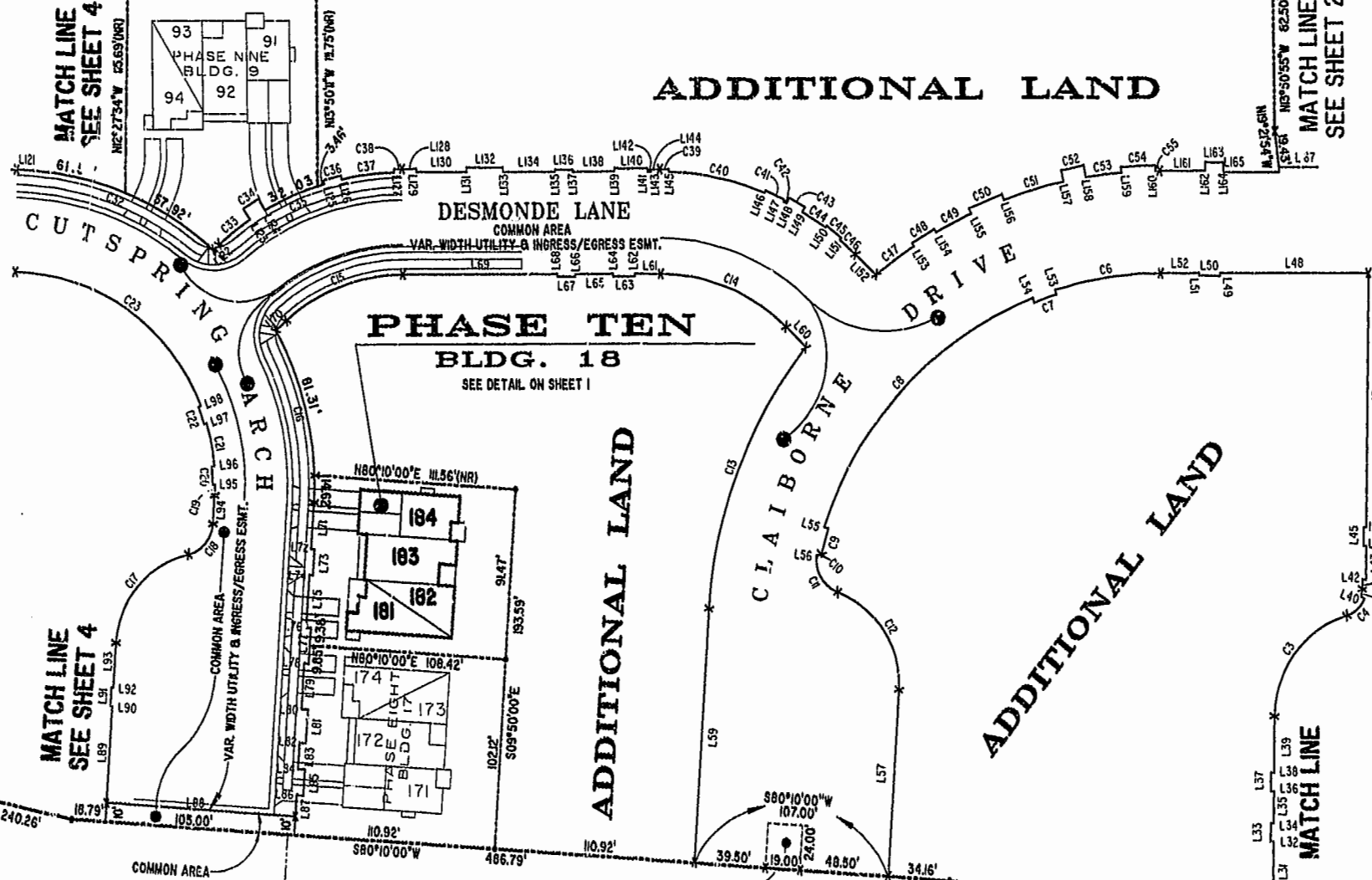


N77°32'26"E 479.30' PIPE(E)
N76°09'49"E 276.18' 191.72'
N76°09'08"E 199.90' PIPE(E)
N76°09'08"E 322.06' 138.59' 183.47' PIPE(E)

MATCH LINE
SEE SHEET 4

MATCH LINE
SEE SHEET 2

ADDITIONAL LAND



MATCH LINE
SEE SHEET 4

SEE SHEET 2
RAVEN TERRACE

ADDITIONAL LAND

MATCH LINE

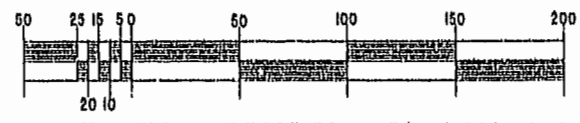
TP 281-10-00-B
NOW OR FORMERLY
752 L.L.C.
INST. #980305

TP 282-08-00-001
NOW OR FORMERLY
752 L.L.C.
INST. #980305

TP 281-10-00-B
NOW OR FORMERLY
752 L.L.C.
INST. #980305

TP 282-08-00-001
NOW OR FORMERLY
752 L.L.C.
INST. #980305

GRAPHIC SCALE: 1" = 50'



City of Williamsburg & County of James City
Circuit Court: This PLAT was recorded on
10 Dec 2002
at 11:16 AM/PM: PB 88 PG 284
DOCUMENT # 022234
RETSY B. WOOLRIDGE, CLERK
[Signature]



EXHIBIT "A"
CLAIBORNE
(A CONDOMINIUM COMMUNITY)
PHASE TEN

Hassell & Folkes, P.C. Engineers Surveyors Planners Chesapeake, VA 23320 (757) 547-9531		SCALE: 1" = 50'	DATE: 11/10/02	FILE NAME PLAT\CL\CLAIORNE\PH-10-0100-10.DWG	REV.
CITY OF WILLIAMSBURG, VIRGINIA		CONTRACT NO C	SHEET 3 of 5		

#022234

88 PAGE 84

LINE TABLE - UTILITY & INGRESS/EGRESS EASEMENT

CURVE TABLE - UTILITY & INGRESS/EGRESS EASEMENT

Table with columns: LINE, BEARING, DISTANCE. Contains utility and ingress/egress easement data for lines L1 through L77.

Table with columns: LINE, BEARING, DISTANCE. Contains utility and ingress/egress easement data for lines L78 through L154.

Table with columns: LINE, BEARING, DISTANCE. Contains utility and ingress/egress easement data for lines L155 through L192.

Table with columns: CURVE, RADIUS, ARC LENGTH, DELTA ANGLE, TANGENT, CHORD BEARING, LENGTH. Contains curve data for curves C1 through C63.

City of Williamsburg & County of James City Circuit Court: This PLAT was recorded or 10 Dec 2002 at 11:16 AM, PB 88, PG 84 DOCUMENT # 022234 RITSY B. WOOLRIDGE, CLERK



Hassell & Folkes, P.C. Engineers Surveyors Planners Chesapeake, VA 23320 (757) 547-9531. SCALE: NONE DATE: 11/18/02 SHEET 5 of 5

EXHIBIT "A" CLABORNE (A CONDOMINIUM COMMUNITY) PHASE TEN CITY OF WILLIAMSBURG, VIRGINIA