

EXHIBIT B--14
 SUPPLEMENTAL CONDOMINIUM PLAN
 OF
 WYNDHAM PLANTATION
 CONDOMINIUM

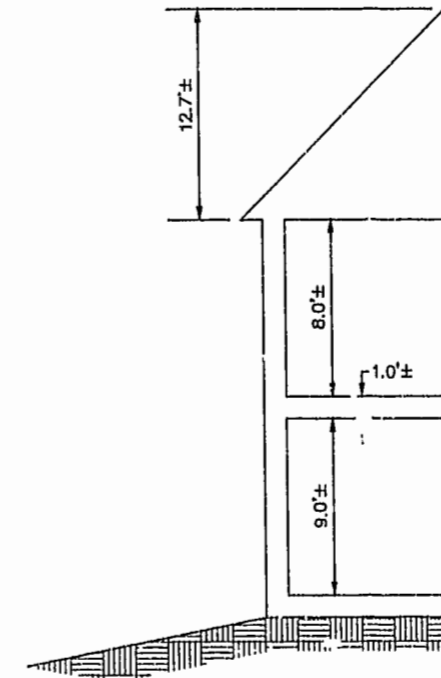
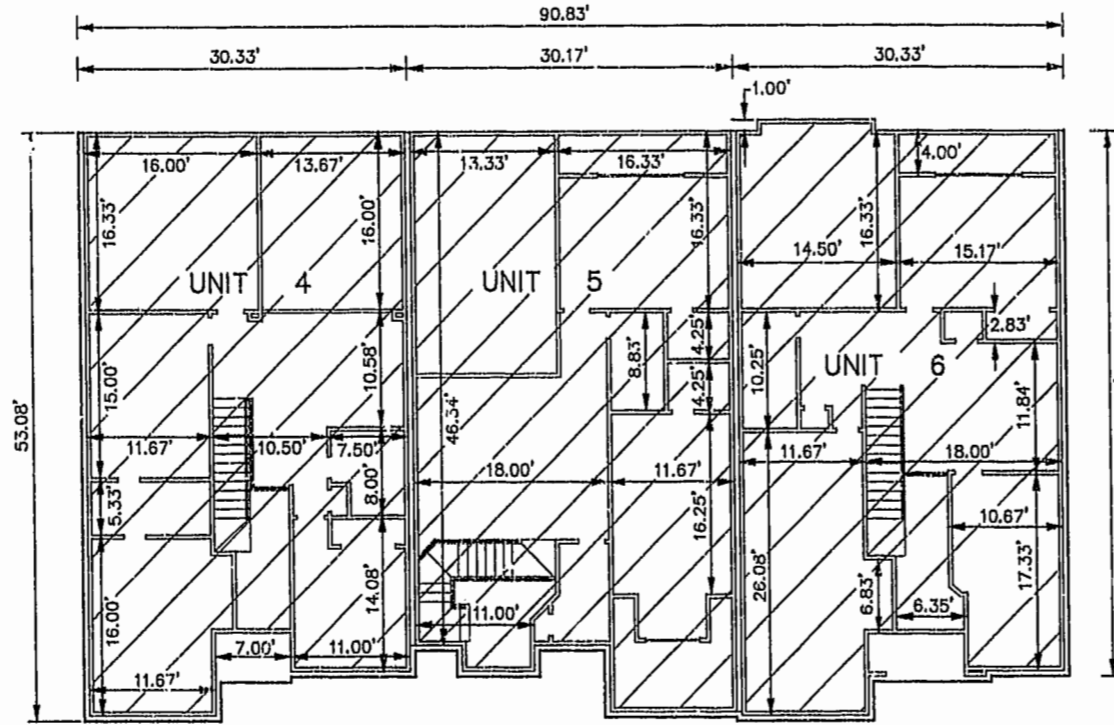
WILLIAMSBURG, VIRGINIA
 SCALE: 1"=10' SEPTEMBER 27, 2002
 JOHN E. SIRINE AND ASSOCIATES, LTD.
 SURVEYORS • ENGINEERS • PLANNERS
 VIRGINIA BEACH, VIRGINIA
 (757) 486-4910

NOTES:

1. BUILDING DIMENSIONS SHOWN HEREON ARE INTERIOR DIMENSIONS. THESE DIMENSIONS ARE IN FEET AND WERE TAKEN FROM PLANS SUPPLIED ENTITLED "WYNDHAM PLANTATION AT WILLIAMSBURG, FLOOR PLANS" BY PROGRESSIVE DESIGNS DATED 11/19/98.
2. INTERIOR UNIT CONFIGURATIONS AND PARTITIONS AS DEPICTED HEREON ARE FOR THE PURPOSE OF ILLUSTRATION ONLY AND MAY NOT REPRESENT THE INTERIOR OF A UNIT AS ACTUALLY CONSTRUCTED.

SECOND FLOOR - BUILDING 19

SCALE: 1"=10'



SCALE: 1"=5'

UNIT AREA

| PHASE | UNIT No. | UNIT ADDRESS | UNIT AREA |
|-------|----------|------------------|------------|
| 16 | 4 | 477 ZELKOVA ROAD | 1,853 S.F. |
| 16 | 5 | 481 ZELKOVA ROAD | 1,957 S.F. |
| 16 | 6 | 485 ZELKOVA ROAD | 1,799 S.F. |

THE UNDERSIGNED CERTIFIES THAT THESE PLANS ARE ACCURATE AND COMPLY WITH THE PROVISIONS OF CODE OF VIRGINIA, SECTION 55-79.58.B AND THAT ALL UNITS OR PORTIONS THEREOF DEPICTED HEREON AND ALL COMMON ELEMENTS HAVE BEEN SUBSTANTIALLY COMPLETED.

SIGNED: JEFFREY D. WILLIAMS
 JEFFREY D. WILLIAMS, L.S.



City of Williamsburg & County of James City
 Circuit Court: This PLAT was recorded on
NOV. 25, 2002
 at 1:30 AM/PM, PB 88, Page 568
 DOCUMENT # 022138
 BETSY B. WOOLRIDGE, CLERK
C. Whelan-Fell Dep. Clork.

