

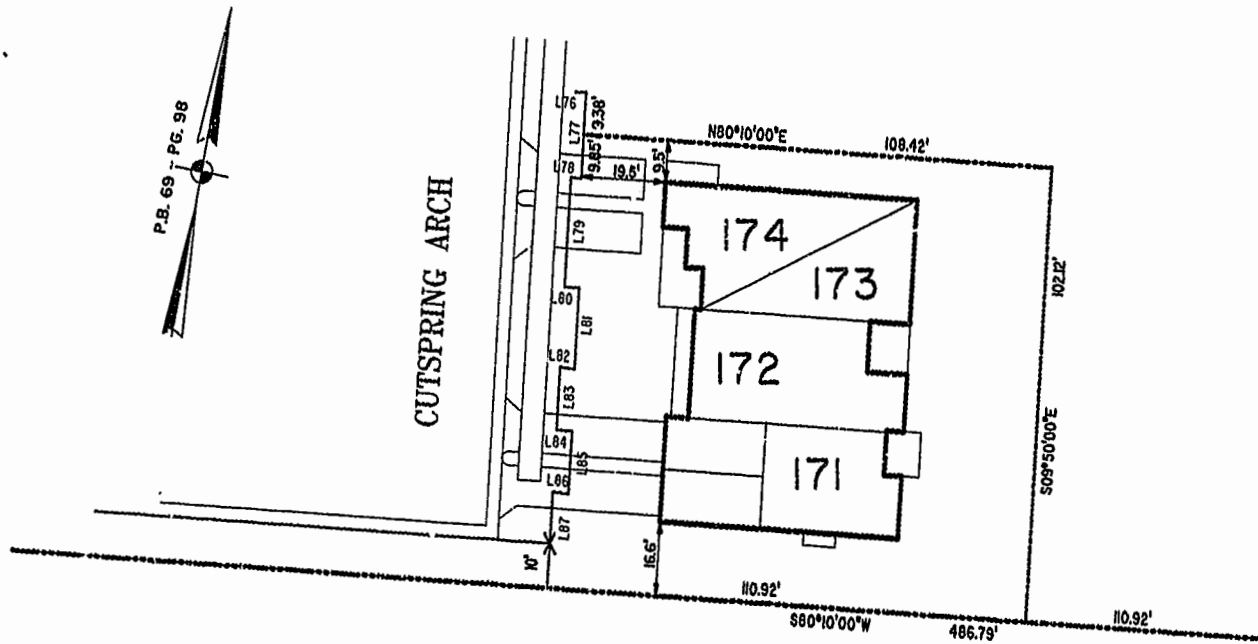
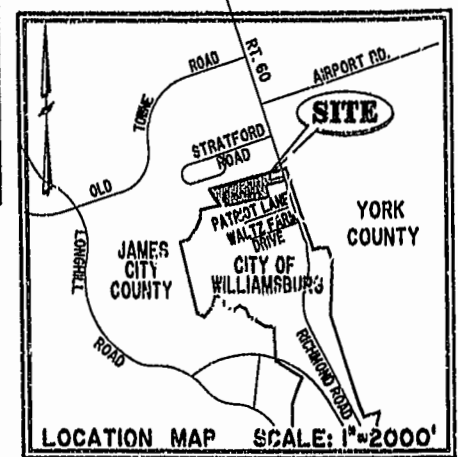
#022131

88 PAGE 49

NOTES:

1. THE TOTAL AREA OF SITE IS 644,256 SQ.FT. (14.790 A.) OF WHICH 362,039 SQ.FT. (8.311 AC.) IS ADDITIONAL LAND.
2. THE AREA OF THE SUBMITTED LAND IS 282,217 SQ.FT. (6.479 AC.)
3. THE COMMON AREA IS TO BE THE RESPONSIBILITY OF THE CONDOMINIUM ASSOCIATION AND HAS A TOTAL AREA OF 4.436 AC.

BUILDING NUMBER	UNIT NUMBER	UNIT TYPE	STREET ADDRESS
17	17-171	D	171 CUTSPRING ARCH
17	17-172	C	172 CUTSPRING ARCH
17	17-173	A3	173 CUTSPRING ARCH
17	17-174	E3	174 CUTSPRING ARCH



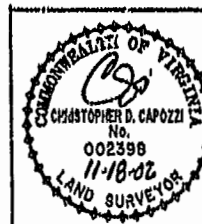
PHASE EIGHT
BLDG. 17
 AREA = 11,186 SQ. FT. = 0.257 AC.
 SCALE: 1" = 25'

City of Williamsburg & County of James City
 Circuit Court: This PLAT was recorded on
22 Nov. 2002
 at 8:44 AM/PM, PB 88, PG 49-53
 DOCUMENT # 022131
 BETSY B. WOOLRIDGE, CLERK
Betsy Woolridge, App. Clerk

I CHRISTOPHER D. CAPOZZI, A CERTIFIED LAND SURVEYOR, DO HEREBY CERTIFY THAT THIS PLAT IS ACCURATE, AND THAT IT COMPLIES WITH THE PROVISIONS OF SECTION 55 - 79.56A OF THE CODE OF VIRGINIA. I FURTHER HEREBY CERTIFY THAT ALL UNITS OR PORTIONS THEREOF DEPICTED HEREON HAVE BEEN SUBSTANTIALLY COMPLETED.

THE UNDERSIGNED CERTIFIED LAND SURVEYOR CERTIFIES THAT HE HAS READ SECTION 55 - 79.56B OF THE CODE OF VIRGINIA, AND FINDS THESE PLANS TO BE ACCURATE AND IN COMPLIANCE WITH THE CODE. I FURTHER CERTIFY THAT ALL UNITS OR PORTIONS THEREOF DEPICTED HEREON HAVE BEEN SUBSTANTIALLY COMPLETED.

11-18-02
 DATE CHRISTOPHER D. CAPOZZI, VA L.S. No. 002398



Hassell & Folkes, P.C.
 Engineers Surveyors Planners
 325 Volvo Parkway
 Chesapeake, VA 23320
 (757)547-9531

DRAWN BY:	DATE
HJS	10/28/02
COMP BY:	DATE
HBA	10/01/02
CHECKED BY:	DATE
HBA	10/30/02

EXHIBIT "A"				
CLAIBORNE				
(A CONDOMINIUM COMMUNITY)				
PHASE EIGHT				
CITY OF WILLIAMSBURG, VIRGINIA				
SIZE	CONTRACT NO	DISK/BOX	FILENAME	REV.
C	90132	1148/16	PH-8-BLDG-17.DWG	
SCALE: N/A		DATE: 10/28/02	SHEET 1 of 5	

A-1520 |

A-1520

JAMES CITY COUNTY TP 33-3-01-29
NOW OR FORMERLY
GARY E. & CATHY L. NESTER
D.B.619 P.683

JAMES CITY COUNTY TP 33-3-01-24
NOW OR FORMERLY
GOLDEN KNIGHTS, INC.
D.B.568 P.316

P.B. 69 - PG. 98

MATCH LINE
SEE SHEET 3

ADDITIONAL LAND

MATCH LINE
SEE SHEET 3

MATCH LINE
SEE SHEET 3

MATCH LINE
SEE SHEET 3

MATCH LINE
SEE SHEET 3

TP 282-08-00-001
NOW OR FORMERLY
752 L.L.C.
INST. #980305

ADDITIONAL LAND

CLAIBORNE DRIVE
VAR. WIDTH UTILITY & INGRESS/EGRESS ESMT.
COMMON AREA

TP 282-04-00-001
NOW OR FORMERLY
CHELSEA GCA REALTY PARTNERSHIP, L.P.
D.B.106 P.407

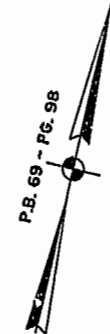
TP 252-01-00-010
TP 252-01-00-009
NOW OR FORMERLY
MARK II INVESTMENTS LTD.
D.B.130 P.671

TP 252-01-00-008

COMMON AREA - PHASE ONE

TP 282-05-00-001
NOW OR FORMERLY
CHELSEA GCA REALTY PARTNERSHIP, L.P.
D.B.113 P.693

U.S. RTE. 60
RICHMOND ROAD
P.B. 69 - PG. 98

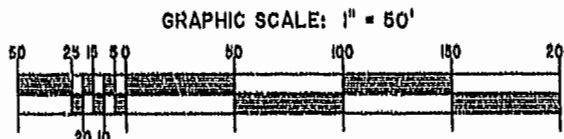


DETAIL
N.T.S.

City of Williamsburg & County of James City
Circuit Court: This PLAT was recorded on
22 Jul 2002
at 3:44 AM/PM, P.B. 88 PG 49-53
DOCUMENT # 022131
BETSY B. WOOLRIDGE, CLERK
Betsy Woolridge Dep. Clerk

EXHIBIT "A"
CLAIBORNE
(A CONDOMINIUM COMMUNITY)
PHASE EIGHT

CITY OF WILLIAMSBURG, VIRGINIA



Hassell & Polkes, P.C. Engineers Surveyors Planners Chesapeake, VA 23320 (757) 547-9531	SCALE: 1" = 50'	DATE: 10/28/02	SHEET 2 of 8
--------------------------------------------------------------------------------------------------	-----------------	----------------	--------------

A-1520

A-1520

JAMES CITY COUNTY TP 33-3-01-27
NOW OR FORMERLY
ARTCRAFT - STRATFORD, L.C.
D.B. 649 P. 470

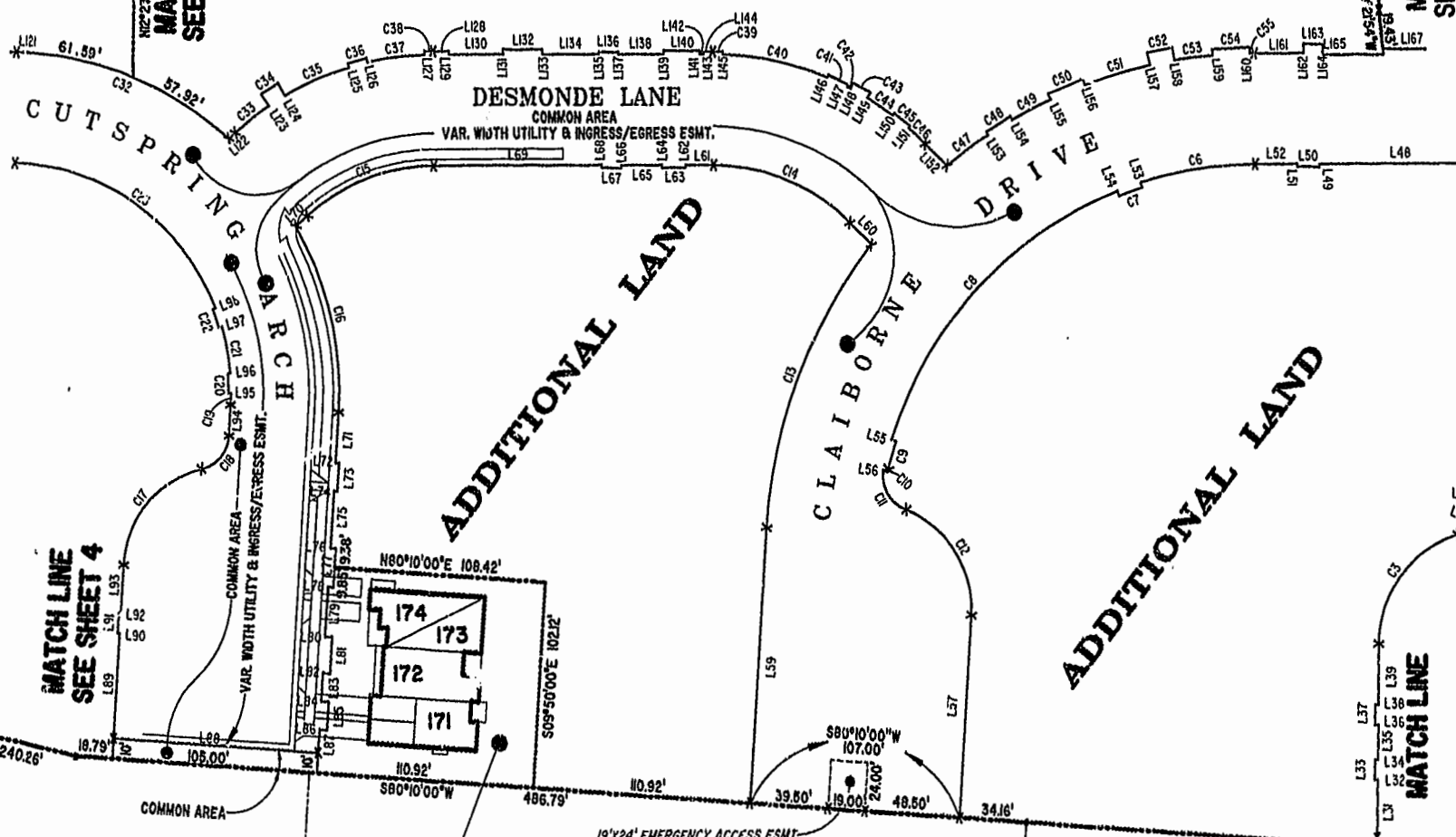
JAMES CITY COUNTY TP 33-3-01-28
NOW OR FORMERLY
GARY E. & CATHY L. NESTER
D.B. 509 P. 735

JAMES CITY COUNTY TP 33-3-C-29
NOW OR FORMERLY
GARY E. & CATHY L. NESTER
D.B. 619 P. 683

ADDITIONAL LAND

ADDITIONAL LAND

ADDITIONAL LAND



MATCH LINE
SEE SHEET 4

MATCH LINE
SEE SHEET 2

MATCH LINE
SEE SHEET 4

SEE SHEET 2

MATCH LINE

TP 281-10-00-B
NOW OR FORMERLY
752 L.L.C.
INST. #980305

PHASE EIGHT
BLDG. 17
SEE DETAIL ON SHEET I

TP 282-08-00-001
NOW OR FORMERLY
752 L.L.C.
INST. #980305

TP 281-10-00-B
NOW OR FORMERLY
752 L.L.C.
INST. #980305

TP 282-08-00-001
NOW OR FORMERLY
752 L.L.C.
INST. #980305

City of Williamsburg & County of James City
Circuit Court: This PLAT was recorded on
28 Feb. 2002
at 3:44 AM/PM, PB 88 PG 49-53
DOCUMENT # 022131
BETSY B. WOOLRIDGE, CLERK
Betsy Woolridge Dep. Clerk

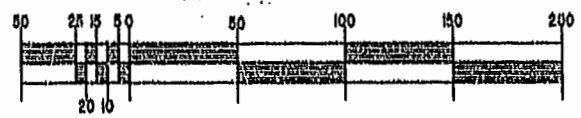
EXHIBIT "A"
CLAIBORNE
(A CONDOMINIUM COMMUNITY)
PHASE EIGHT

CITY OF WILLIAMSBURG, VIRGINIA



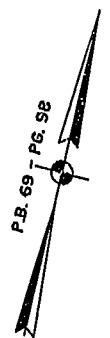
Hassell & Folkes, P.C. Engineers Surveyors Planners Chesapeake, VA 23320 (757) 547-9531	SIZE C	CONTRACT NO 1148/16	DISK/BOX PH-8-BLDG-17.DWG	FILENAME PH-8-BLDG-17.DWG	REV.
SCALE: 1" = 80'		DATE: 10/25/02		SHEET 3 of 5	

GRAPHIC SCALE: 1" = 50'



A-1520

A-1520



JAMES CITY COUNTY TP 33-3-01-27
NOW OR FORMERLY
ARTCRAFT - STRATFORD, L.C.
O.B.649 P.470

CITY OF WILLIAMSBURG CORPORATE LIMITS
JAMES CITY COUNTY CORPORATE LIMITS

18" PIPELINE ESMT. CITY OF NEWPORT NEWS
D B 78 P 481 & D B 78 P 491

JAMES CITY COUNTY TP 33-3-01-30
NOW OR FORMERLY
PHILIP RICHARDSON CO., INC.
P.B. 69 P. 98
INST. #980012581

ADDITIONAL LAND

DETAIL
N.T.S.

TP 281-03-00-A
NOW OR FORMERLY
SALAH & CHANG TURKMANI
D.B. 94 P. 92

TP 281-10-00-B
NOW OR FORMERLY
752 L.L.C.
INST. #990305

City of Williamsburg & County of James City
Circuit Court: This PLAT was recorded on
22 Nov. 2007
at 3:44 A.M.P.M. P.B. 88 PG48-53
DOCUMENT # 022131
BETSY B. WOOLRIDGE, CLERK
Betsy Woolridge Clerk

GRAPHIC SCALE: 1" = 50'

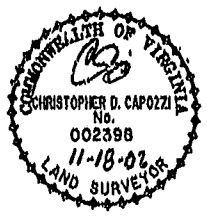
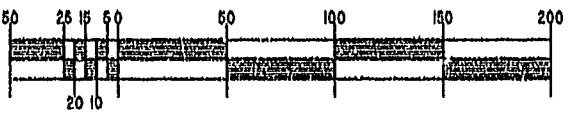


EXHIBIT "A"
CLAIBORNE
(A CONDOMINIUM COMMUNITY)
PHASE EIGHT
CITY OF WILLIAMSBURG, VIRGINIA

Hassell & Polkes, P.C. Engineers Surveyors Planners Chesapeake, VA. 23320 (757) 547-9531	SIZE C	CONTRACT NO 146/16	DISK/BOX PH-8-8L08-47.DWG	FILENAME	REV.
SCALE: 1" = 50'	DATE: 10/25/02	SHEET 4 of 5			

#022131

88 PAGE 53

LINE TABLE - UTILITY & INGRESS/EGRESS EASEMENT

CURVE TABLE - UTILITY & INGRESS/EGRESS EASEMENT

Table with columns: LINE, BEARING, DISTANCE. Rows L1 to L77.

Table with columns: LINE, BEARING, DISTANCE. Rows L78 to L164.

Table with columns: LINE, BEARING, DISTANCE. Rows L165 to L192.

Table with columns: CURVE, RADIUS, ARC LENGTH, DELTA ANGLE, TANGENT, CHORD BEARING, LENGTH. Rows C1 to C63.

A-1520

A-1520

City of Williamsburg & County of James City Circuit Court: This PLAT was recorded on 22 Nov 2022 at 3:44 AM/PM, PB 88 PG 44-53 DOCUMENT # 022131 Betsy D. Woolhidge, Clerk



EXHIBIT "A" CLAIBORNE (A CONDOMINIUM COMMUNITY) PHASE EIGHT

Table with columns: Hassell & Folkes, P.C., CONTRACT NO, DISK/BOX, FILENAME, REV., SCALE, DATE, SHEET.