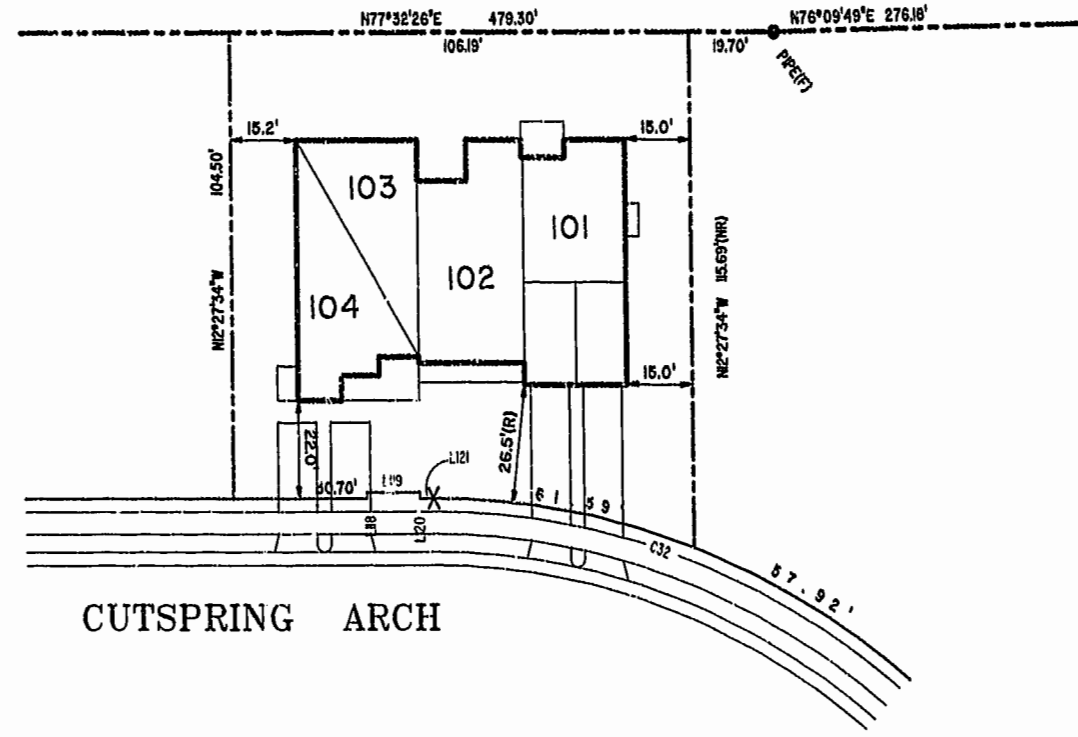
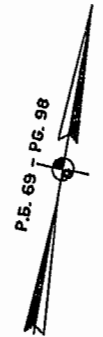
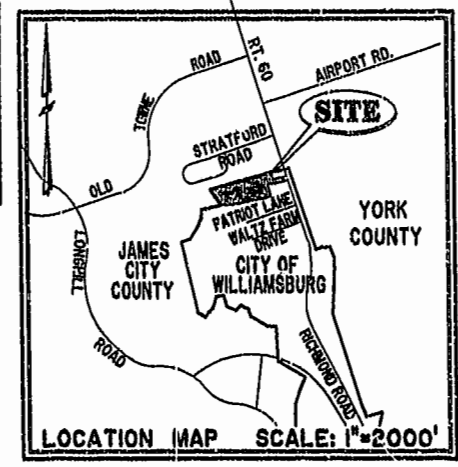


NOTES:
 1. THE TOTAL AREA OF SITE IS 644,256 SQ.FT. (14.790 AC.) OF WHICH 373,225 SQ.FT. (8.568 AC.) IS ADDITIONAL LAND.
 2. THE AREA OF THE SUBMITTED LAND IS 271,031 SQ.FT. (6.222 AC.)
 3. THE COMMON AREA IS TO BE THE RESPONSIBILITY OF THE CONDOMINIUM ASSOCIATION AND HAS A TOTAL AREA OF 4.436 AC.

BUILDING NUMBER	UNIT NUMBER	UNIT TYPE*	STREET ADDRESS
10	10-101	D	101 CUTSPRING ARCH
10	10-102	C(OPTION)	102 CUTSPRING ARCH
10	10-103	A3	103 CUTSPRING ARCH
10	10-104	E3	104 CUTSPRING ARCH



CUTSPRING ARCH

**PHASE SEVEN
 BLDG. 10**

AREA = 11,303 SQ. FT. = 0.259 A.

SCALE: 1" = 25'

City of Williamsburg & County of James City
 Circuit Court: This PLAT was recorded on
28 Oct. 2002
 at 2:53 AM PM, PB 88 PG 22
 DOCUMENT # 021917
 BETSY B. WOOLRIDGE, CLERK
Betsy Woolridge Dep. Clerk

I CHRISTOPHER D. CAPOZZI, A CERTIFIED LAND SURVEYOR, DO HEREBY CERTIFY THAT THIS PLAT IS ACCURATE, AND THAT IT COMPLIES WITH THE PROVISIONS OF SECTION 55 - 79.58A OF THE CODE OF VIRGINIA. I FURTHER HEREBY CERTIFY THAT ALL UNITS OR PORTIONS THEREOF DEPICTED HEREON HAVE BEEN SUBSTANTIALLY COMPLETED.

THE UNDERSIGNED CERTIFIED LAND SURVEYOR CERTIFIES THAT HE HAS READ SECTION 55 - 79.58B OF THE CODE OF VIRGINIA, AND FINDS THESE PLANS TO BE ACCURATE AND IN COMPLIANCE WITH THE CODE. I FURTHER CERTIFY THAT ALL UNITS OR PORTIONS THEREOF DEPICTED HEREON HAVE BEEN SUBSTANTIALLY COMPLETED.

10-22-02
 DATE CHRISTOPHER D. CAPOZZI, VA L.S. No. 002398



Hassell & Folkes, P.C.
 Engineers Surveyors Planners
 325 Volvo Parkway
 Chesapeake, VA 23320
 (757) 547-9531

DRAWN BY:	DATE
HJS	10/03/02
COMP BY:	DATE
HBA	10/01/02
CHECKED BY:	DATE
HBA	10/16/02

EXHIBIT "A"

CLAIBORNE
 (A CONDOMINIUM COMMUNITY)
PHASE SEVEN
 CITY OF WILLIAMSBURG, VIRGINIA

SIZE	CONTRACT NO	DISK/BOX	FILENAME	REV.
C	98132	114G/16	PH-7-BLUG-10.DWG	

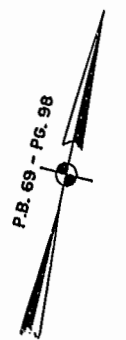
SCALE: N/A | DATE: 10/03/02 | SHEET 1 of 8

#021917

88 PAGE 19

JAMES CITY COUNTY TP 33-3-01-29
NOW OR FORMERLY
GARY E. & CATHY L. NESTER
D.B.619 P.663

JAMES CITY COUNTY TP 33-3-01-24
NOW OR FORMERLY
GOLDEN KNIGHTS, INC.
D.B.568 P.316



MATCH LINE
SEE SHEET 3

ADDITIONAL LAND

L165 L166 L167 L168 L169 L170 L171 L172 L173 L174 L175 L176 L177 L178 L179 L180 L181 L182 L183 L184 L185 L186 L187 L188 L189 L190 L191 L192 L193 L194 L195 L196 L197 L198 L199 L200 L201 L202 L203 L204 L205 L206 L207 L208 L209 L210 L211 L212 L213 L214 L215 L216 L217 L218 L219 L220 L221 L222 L223 L224 L225 L226 L227 L228 L229 L230 L231 L232 L233 L234 L235 L236 L237 L238 L239 L240 L241 L242 L243 L244 L245 L246 L247 L248 L249 L250 L251 L252 L253 L254 L255 L256 L257 L258 L259 L260 L261 L262 L263 L264 L265 L266 L267 L268 L269 L270 L271 L272 L273 L274 L275 L276 L277 L278 L279 L280 L281 L282 L283 L284 L285 L286 L287 L288 L289 L290 L291 L292 L293 L294 L295 L296 L297 L298 L299 L300 L301 L302 L303 L304 L305 L306 L307 L308 L309 L310 L311 L312 L313 L314 L315 L316 L317 L318 L319 L320 L321 L322 L323 L324 L325 L326 L327 L328 L329 L330 L331 L332 L333 L334 L335 L336 L337 L338 L339 L340 L341 L342 L343 L344 L345 L346 L347 L348 L349 L350 L351 L352 L353 L354 L355 L356 L357 L358 L359 L360 L361 L362 L363 L364 L365 L366 L367 L368 L369 L370 L371 L372 L373 L374 L375 L376 L377 L378 L379 L380 L381 L382 L383 L384 L385 L386 L387 L388 L389 L390 L391 L392 L393 L394 L395 L396 L397 L398 L399 L400 L401 L402 L403 L404 L405 L406 L407 L408 L409 L410 L411 L412 L413 L414 L415 L416 L417 L418 L419 L420 L421 L422 L423 L424 L425 L426 L427 L428 L429 L430 L431 L432 L433 L434 L435 L436 L437 L438 L439 L440 L441 L442 L443 L444 L445 L446 L447 L448 L449 L450 L451 L452 L453 L454 L455 L456 L457 L458 L459 L460 L461 L462 L463 L464 L465 L466 L467 L468 L469 L470 L471 L472 L473 L474 L475 L476 L477 L478 L479 L480 L481 L482 L483 L484 L485 L486 L487 L488 L489 L490 L491 L492 L493 L494 L495 L496 L497 L498 L499 L500 L501 L502 L503 L504 L505 L506 L507 L508 L509 L510 L511 L512 L513 L514 L515 L516 L517 L518 L519 L520 L521 L522 L523 L524 L525 L526 L527 L528 L529 L530 L531 L532 L533 L534 L535 L536 L537 L538 L539 L540 L541 L542 L543 L544 L545 L546 L547 L548 L549 L550 L551 L552 L553 L554 L555 L556 L557 L558 L559 L560 L561 L562 L563 L564 L565 L566 L567 L568 L569 L570 L571 L572 L573 L574 L575 L576 L577 L578 L579 L580 L581 L582 L583 L584 L585 L586 L587 L588 L589 L590 L591 L592 L593 L594 L595 L596 L597 L598 L599 L600 L601 L602 L603 L604 L605 L606 L607 L608 L609 L610 L611 L612 L613 L614 L615 L616 L617 L618 L619 L620 L621 L622 L623 L624 L625 L626 L627 L628 L629 L630 L631 L632 L633 L634 L635 L636 L637 L638 L639 L640 L641 L642 L643 L644 L645 L646 L647 L648 L649 L650 L651 L652 L653 L654 L655 L656 L657 L658 L659 L660 L661 L662 L663 L664 L665 L666 L667 L668 L669 L670 L671 L672 L673 L674 L675 L676 L677 L678 L679 L680 L681 L682 L683 L684 L685 L686 L687 L688 L689 L690 L691 L692 L693 L694 L695 L696 L697 L698 L699 L700 L701 L702 L703 L704 L705 L706 L707 L708 L709 L710 L711 L712 L713 L714 L715 L716 L717 L718 L719 L720 L721 L722 L723 L724 L725 L726 L727 L728 L729 L730 L731 L732 L733 L734 L735 L736 L737 L738 L739 L740 L741 L742 L743 L744 L745 L746 L747 L748 L749 L750 L751 L752 L753 L754 L755 L756 L757 L758 L759 L760 L761 L762 L763 L764 L765 L766 L767 L768 L769 L770 L771 L772 L773 L774 L775 L776 L777 L778 L779 L780 L781 L782 L783 L784 L785 L786 L787 L788 L789 L790 L791 L792 L793 L794 L795 L796 L797 L798 L799 L800 L801 L802 L803 L804 L805 L806 L807 L808 L809 L810 L811 L812 L813 L814 L815 L816 L817 L818 L819 L820 L821 L822 L823 L824 L825 L826 L827 L828 L829 L830 L831 L832 L833 L834 L835 L836 L837 L838 L839 L840 L841 L842 L843 L844 L845 L846 L847 L848 L849 L850 L851 L852 L853 L854 L855 L856 L857 L858 L859 L860 L861 L862 L863 L864 L865 L866 L867 L868 L869 L870 L871 L872 L873 L874 L875 L876 L877 L878 L879 L880 L881 L882 L883 L884 L885 L886 L887 L888 L889 L890 L891 L892 L893 L894 L895 L896 L897 L898 L899 L900 L901 L902 L903 L904 L905 L906 L907 L908 L909 L910 L911 L912 L913 L914 L915 L916 L917 L918 L919 L920 L921 L922 L923 L924 L925 L926 L927 L928 L929 L930 L931 L932 L933 L934 L935 L936 L937 L938 L939 L940 L941 L942 L943 L944 L945 L946 L947 L948 L949 L950 L951 L952 L953 L954 L955 L956 L957 L958 L959 L960 L961 L962 L963 L964 L965 L966 L967 L968 L969 L970 L971 L972 L973 L974 L975 L976 L977 L978 L979 L980 L981 L982 L983 L984 L985 L986 L987 L988 L989 L990 L991 L992 L993 L994 L995 L996 L997 L998 L999 L1000

MATCH LINE
SEE SHEET 3

TP 202-08-00-001
NOW OR FORMERLY
752 L.L.C.
INST. #980305

SEE SHEET 3

RAVEN TERRACE
VAR. WIDTH UTILITY & INGRESS/EGRESS ESMT.
COMMON AREA

ADDITIONAL LAND

CHELSEA GCA REALTY PARTNERSHIP, L.P.
D.B.006 P.407

TP 282-04-00-001
NOW OR FORMERLY
CHELSEA GCA REALTY PARTNERSHIP, L.P.
D.B.006 P.407

CLAIBORNE DRIVE
VAR. WIDTH UTILITY & INGRESS/EGRESS ESMT.
COMMON AREA

MARK II INVESTMENTS LTD.
D.B.130 P.671

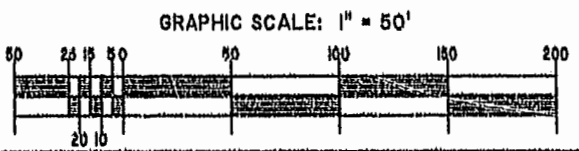
TP 282-05-00-001
NOW OR FORMERLY
CHELSEA GCA REALTY PARTNERSHIP, L.P.
D.B.113 P.693

U.S. RTE. 60
RICHMOND ROAD
P.B. 69 - PG. 98

DETAIL
N.T.S.

City of Williamsburg & County of Jura s City
Circuit Court: This PLAT was record ed on
28 Oct 2002
at 2:53 AM PM. PB 88 PG 18-22
DOCUMENT # 021917
BETSY B. WOOLRIDGE, CLERK
Betsy B. Woolridge, Dep. Clerk

EXHIBIT "A"
CLAIBORNE
(A CONDOMINIUM COMMUNITY)
PHASE SEVEN



Hassell & Folkes, P.C. Engineers Surveyors Planners Chesapeake, VA 23320 (757) 547-9531	SIZE	CONTRACT NO	DISK/BOX	FILENAME	REV.
	C		1146/10	PH-7-DL08-10.DWG	
SCALE: 1" = 50'		DATE: 10/03/02	SHEET 2 of 8		

A-1520

A-1520

#021917

88 PAGE 20

JAMES CITY COUNTY TP 33-3-01-27
NOW OR FORMERLY
ARTCRAFT - STRATFORD, L.C.
D.B. 649 P. 470

JAMES CITY COUNTY TP 33-3-01-28
NOW OR FORMERLY
GARY E. & CATHY L. NESTER
D.B. 509 P. 735

JAMES CITY COUNTY TP 33-3-01-29
NOW OR FORMERLY
GARY E. & CATHY L. NESTER
D.B. 619 P. 603

ADDITIONAL LAND

ADDITIONAL LAND

ADDITIONAL LAND

DESMONDE LANE
COMMON AREA
VAR. WIDTH UTILITY & INGRESS/EGRESS ESMT.

CUTSPRING
ARCH

CLAIBORNE
DRIVE

RAVYN TERRACE

MATCH LINE
SEE SHEET 4

MATCH LINE
SEE SHEET 4

MATCH LINE
SEE SHEET 2

MATCH LINE
SEE SHEET 2

COMMON AREA W/PHASE THREE
AREA = 1,050 SQ. FT. = 0.024 AC.

TP 281-10-00-B
NOW OR FORMERLY
752 L.L.C.
INST. #980305

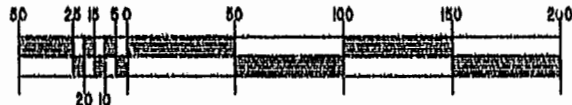
TP 282-08-03-001
NOW OR FORMERLY
752 L.L.C.
INST. #980305

TP 281-10-00-B
NOW OR FORMERLY
752 L.L.C.
INST. #980305

TP 282-08-00-001
NOW OR FORMERLY
752 L.L.C.
INST. #980305

19'x24' EMERGENCY ACCESS ESMT.
INST. #000897

GRAPHIC SCALE: 1" = 50'



City of Williamsburg & County of James City
Circuit Court: TP's LAT was recorded on
28. Oct. 2002
at 2:53 AM/PM PE 88 PG 18-22
DOCUMENT # 021917
BETSY B. WOOLRIDGE, CLERK
Betsy Woolridge, Dep. Clerk

EXHIBIT "A"
CLAIBORNE
(A CONDOMINIUM COMMUNITY)
PHASE SEVEN

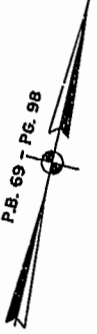
CITY OF WILLIAMSBURG, VIRGINIA					
Hassell & Polkes, P.C.	SIZE	CONTRACT NO	DISK/BOX	FILENAME	REV.
Engineers Surveyors Planners Chesapeake, VA. 23320 (757) 547-9531	C		1146/16	PH-7-BLDG-10DW6	
SCALE: 1" = 80'		DATE: 10/03/02		SHEET 3 of 6	

A-1520

A-1520

#021917

88 PAGE 21



P.B. 69 PG. 98

PHASE SEVEN BLDG. 10

SEE DETAIL ON SHEET 1

JAMES CITY COUNTY TP 33-3-01-27
NOW OR FORMERLY
ARTCRAFT - STRATFORD, L.C.
D.B. 649 P. 470

CITY OF WILLIAMSBURG CORPORATE LIMITS
JAMES CITY COUNTY CORPORATE LIMITS

18' PIPELINE ESMT. CITY OF NEWPORT NEWS
200' VA. POWER ESMT. P.B. 69 P. 98, P.B. 12 P. 43

JAMES CITY COUNTY TP 33-3-01-30
NOW OR FORMERLY
PHILIP RICHARDSON CO., INC.
P.B. 69 P. 98
INST. #98002581

ADDITIONAL LAND

DETAIL
N.T.S.

TP 201-03-00-A
NOW OR FORMERLY
SALAH & CHANG TURKMANI
D.B. 94 P. 92

TP 201-10-00-B
NOW OR FORMERLY
752 L.L.C.
I.I.C. #980305

TP 202-06-00-001
NOW OR FORMERLY
752 L.L.C.
INST. #7-0305

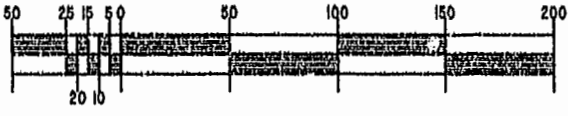
EXHIBIT "A" CLAIBORNE (A CONDOMINIUM COMMUNITY) PHASE SEVEN

CITY OF WILLIAMSBURG, VIRGINIA

Hassell & Polkes, P.C. Engineers Surveyors Planners Charlottesville, VA 22902 (757) 547-9531	SIZE C	CONTRACT NO 1140/16	DISK/BOX PH-7-BLDG-10DW0	FILENAME REV.
SCALE: 1" = 50'	DATE: 10/03/02	SHEET 4 of 0		

City of Williamsburg & County of James City
Circuit Court: This PLAT was recorded on
28 Oct. 2002
at 2:52 AM/PM, P.B. 88 PG. 12-22
DOCUMENT # 021917
BETSY B. WOOLRIDGE, CLERK
Betsy Woolridge, Dep. Clerk

GRAPHIC SCALE: 1" = 50'



A-1520

A-1520

#021917

88 PAGE 22

LINE TABLE - UTILITY & INGRESS/EGRESS EASEMENT

CURVE TABLE - UTILITY & INGRESS/EGRESS EASEMENT

Table with columns: LINE, BEARING, DISTANCE. Contains line data from L1 to L77.

Table with columns: LINE, BEARING, DISTANCE. Contains line data from L78 to L154.

Table with columns: LINE, BEARING, DISTANCE. Contains line data from L155 to L192.

Table with columns: CURVE, RADIUS, ARC LENGTH, DELTA ANGLE, TANGENT, CHORD BEARING, LENGTH. Contains curve data from C1 to C63.

City of Williamsburg & County of James City Circuit Court: This PLAT was recorded on 28 Oct. 2002 at 2:53 PM, PB 88 PG 18-22 DOCUMENT # 021917 BETSY B. WOODRIDGE, CLERK



EXHIBIT "A" CLAIBORNE (A CONDOMINIUM COMMUNITY) PHASE SEVEN CITY OF WILLIAMSBURG, VIRGINIA

Table with columns: Hassell & Polkes, P.C., SIZE, CONTRACT NO, DISK/BOX, FILENAME, REV., SCALE, DATE, SHEET 5 of 6.