

City of Williamsburg & County of James City
 Circuit Court: This PLAT was recorded on
 22 Oct 2002

021896 88 PAGE 17

at 2:47 M/PM, PB 38 PG 17
 DOCUMENT # 221896
 BETSY D. WOOLRIDGE, CLERK
 Dep. Clerk

VA STATE GRID NORTH
 SOUTH ZONE 1983

TAX PARCEL 461-((3))-1
 THE COLLEGE OF WILLIAM & MARY
 INSTRUMENT #980409
 PB 69 PG 15

TAX PARCEL OF WILLIAM & MARY
 THE COLLEGE OF WILLIAM & MARY
 DB 24 PG 163
 LVE DB 22 PG 188
 REF PB 3 PG 32

COURSE	BEARING	DISTANCE
L10	N 19°25'21"E	52.53'
L11	N 19°25'21"E	52.47'
L12	S 19°25'21"W	52.47'
L13	S 19°25'21"W	52.53'

TAX PARCEL 461-((3))-2
 THE CITY OF WILLIAMSBURG
 DB 82 PG 774
 PB 69 PG 15

TAX PARCEL 491-A-7
 LAWRENCE TYNES, JR.
 INSTRUMENT #970001211

TAX PARCEL 491-A-13 (PART)
 HEIRS OF PARTHENA BAILEY WILSON
 WB 21 PG 1366

AREA TABULATION
 TOTAL AREA 226,796 SQ. FT OR 5.20652 ACRES
 RESIDUE AREA (PART LOT 49) 18,716 SQ FT
 NET AREA RETAINED BY CITY 208,080 SQ FT OR 4.77686 ACRES

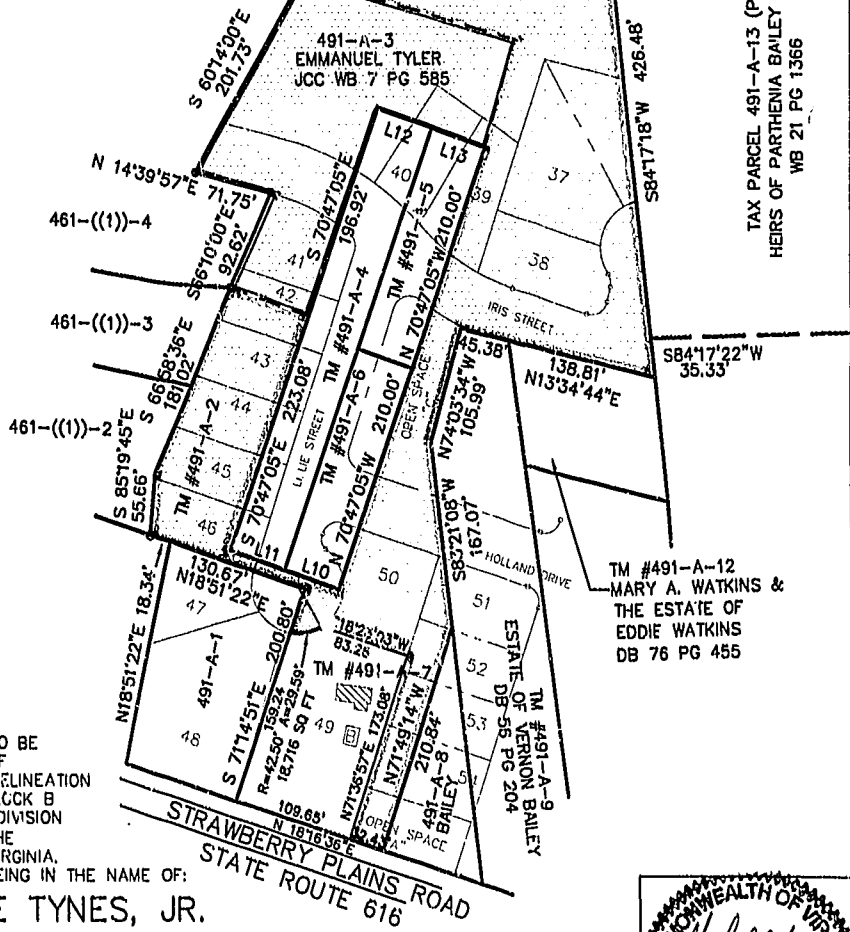


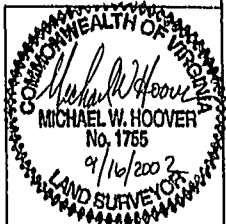
EXHIBIT SHOWING
 TWO PARCELS OF LAND TO BE
 ACQUIRED BY THE CITY OF
 WILLIAMSBURG AND THE DELINEATION
 OF PROPOSED LOT 49, BLOCK B
 STRAWBERRY PLAINS SUBDIVISION
 (TO BE DEDICATED) BY THE
 CITY OF WILLIAMSBURG, VIRGINIA,
 THE SUBJECT PARCELS BEING IN THE NAME OF:

1. LAWRENCE TYNES, JR.

INSTRUMENT #970001211, TAX PARCEL 491-A-2 AND 491-A-7 CONTAINING 226,796 SQ FT
 OR 5.20652 ACRES LESS & EXCEPT PARCEL 491-A-3 (REFERENCE DB 28 PG 223)
 CITY OF WILLIAMSBURG, VIRGINIA.

2. EMMANUEL TYLER

JCC WB 7 PG 585 (REFERENCE DB 28 PG 223) TAX PARCEL 491-A-3 BEING AN
 UNQUANTIFIABLE CONVEYANCE FROM TAX PARCEL 491-A-7 CITY OF WILLIAMSBURG, VIRGINIA.



Dewberry & Davis, Inc.
 A Dewberry Company
 9081 MAYLAND DRIVE SUITE 201
 Richmond, Virginia 23233
 (804) 290-7057 FAX (804) 290-7028
 WWW.DEWBERRY.COM

Architects
 Engineers
 Planners
 Surveyors

DRAWING: R981108\PLAT\491-A-7REV1.DWG
 DATE: 03-06-2001 REVISED 9-16-2002
 SCALE: 1" = 100'
 SHEET 1 OF 1