

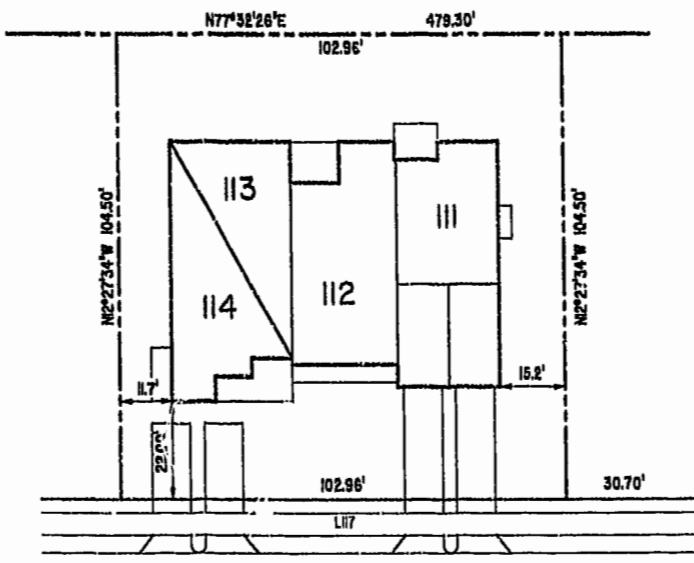
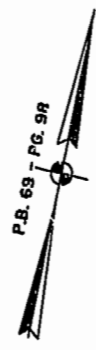
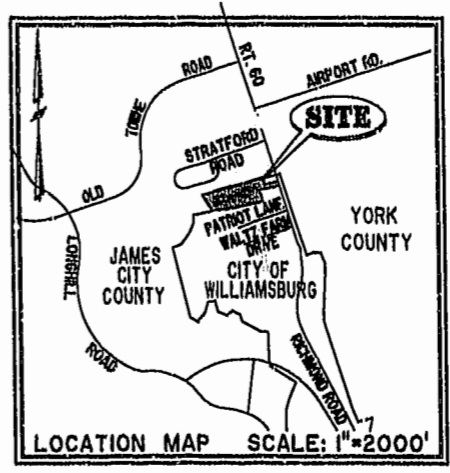
#021689

87 PAGE 73

NOTES:

1. THE TOTAL AREA OF SITE IS 644,256 SQ.FT. (14.790 AC.) OF WHICH 384,528 SQ.FT. (8.827 AC.) IS ADDITIONAL LAND.
2. THE AREA OF THE SUBMITTED LAND IS 289,728 SQ.FT. (5.963 AC.)
3. THE COMMON AREA IS TO BE THE RESPONSIBILITY OF THE CONDOMINIUM ASSOCIATION AND HAS A TOTAL AREA OF 4.436 AC.

BUILDING NUMBER	UNIT NUMBER	UNIT TYPE*	STREET ADDRESS
11	11-111	D	111 CUTSPRING ARCH
11	11-112	(OPTION)	112 CUTSPRING ARCH
11	11-113	A3	113 CUTSPRING ARCH
11	11-114	E3	114 CUTSPRING ARCH



VAR. WIDTH UTILITY & INGRESS/EGRESS ESMT.
CUTSPRING ARCH
COMMON AREA

**PHASE SIX
BLDG. 11**

AREA = 10,759 SQ. FT. = 0.247 AC.
SCALE: 1" = 25'

City of Williamsburg & County of James City
Circuit Court: This PLAT was recorded on
Sept. 17, 2002
at 10:27 AM PM, PG 87 PC 73-77
DOCUMENT # 021689
GETSY B. WOOLRIDGE, CLERK
C. S. Klein, Esq., Dep. Clerk

I CHRISTOPHER D. CAPOZZI, A CERTIFIED LAND SURVEYOR, DO HEREBY CERTIFY THAT THIS PLAT IS ACCURATE, AND THAT IT COMPLIES WITH THE PROVISIONS OF SECTION 55 - 79.58A OF THE CODE OF VIRGINIA. I FURTHER HEREBY CERTIFY THAT ALL UNITS OR PORTIONS THEREOF DEPICTED HEREON HAVE BEEN SUBSTANTIALLY COMPLETED.

THE UNDERSIGNED CERTIFIED LAND SURVEYOR CERTIFIES THAT HE HAS READ SECTION 55 - 79.58B OF THE CODE OF VIRGINIA, AND FINDS THESE PLANS TO BE ACCURATE AND IN COMPLIANCE WITH THE CODE. I FURTHER CERTIFY THAT ALL UNITS OR PORTIONS THEREOF DEPICTED HEREON HAVE BEEN SUBSTANTIALLY COMPLETED.

9-9-02
DATE
C.D. Capozzi
LAND SURVEYOR No. 002398



Hassell & Folkes, P.C.
Engineers Surveyors Planners
325 Silvio Parkway
Chesapeake, VA 23320
(757) 547-9531

DRAWN BY:	DATE
HJS	08/21/02
COMP BY:	DATE
HBA	08/31/01
CHECKED BY:	DATE
HBA	08/26/02

EXHIBIT "A"				
CLAIBORNE				
(A CONDOMINIUM COMMUNITY)				
PHASE SIX				
CITY OF WILLIAMSBURG, VIRGINIA				
SIZE	CONTRACT NO	DISK/BOX	FILENAME	REV.
C	98132	1146/16	PH-6-BLDG-110WG	
SCALE: N/A		DATE: 08/21/02		SHEET 1 of 8

A-1520

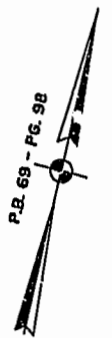
A-1520

#021689

87 PAGE 74

JAMES CITY COUNTY TP 33-3-01-29
NOW OR FORMERLY
GARY E. & CATHY L. NESTER
D.B.619 P.683

JAMES CITY COUNTY TP 33-3-01-24
NOW OR FORMERLY
GOLDEN KNIGHTS, INC.
D.B.568 P.316



MATCH LINE
SEE SHEET 3

ADDITIONAL LAND

L165 L166 L167 L168 L169 L170 L171 L172 L173 L174 L175 L176 L177 L178 L179 L180 L181 L182 L183 L184 L185 L186 L187 L188 L189

MATCH LINE
SEE SHEET 3
L30 L31 L32 L33 L34 L35 L36 L37 L38 L39 L40 L41 L42 L43 L44 L45 L46 L47 L48 L49 L50 L51 L52 L53 L54 L55 L56 L57 L58 L59 L60 L61 L62 L63 L64 L65 L66 L67 L68 L69 L70 L71 L72 L73 L74 L75 L76 L77 L78 L79 L80 L81 L82 L83 L84 L85 L86 L87 L88 L89 L90 L91 L92 L93 L94 L95 L96 L97 L98 L99 L100

RAVEN TERRACE
VAR. WIDTH UTILITY & INGRESS/EGRESS ESMT.
COMMON AREA

ADDITIONAL LAND

CLAIBORNE DRIVE
VAR. WIDTH UTILITY & INGRESS/EGRESS ESMT.
COMMON AREA

CHELSEA GCA REALTY PARTNERSHIP, L.P.
TP 282-04-00-001
NOW OR FORMERLY
D.B.006 P.407

MARK II INVESTMENTS LTD.
TP 252-01-00-009
NOW OR FORMERLY
D.B.130 P.671

CHELSEA GCA REALTY PARTNERSHIP, L.P.
TP 282-05-00-001
NOW OR FORMERLY
D.B.013 P.693

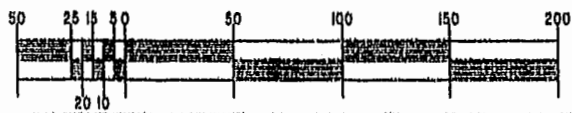
U.S. RTE. 60
RICHMOND ROAD

P.B. 69 - PG. 98

City of Williamsburg & County of James City
Circuit Court: This PLAT was recorded on
September 17, 2002
at 10:27 AM/PM, P.B. 87 PG. 73-77
DOCUMENT # 021689
BETSY B. WOOLRIDGE, CLERK
C. C. Law, Fore Dep. Clerk

EXHIBIT "A"
CLAIBORNE
(A CONDOMINIUM COMMUNITY)
PHASE SIX

GRAPHIC SCALE: 1" = 50'



Hassel & Folkes, P.C. Engineers Surveyors Planners Chesapeake, VA 23320 (757) 547-8631	SIZE C	CONTRACT NO 1146/18	DISK/BOX PH-6-BLDG-BDWG	FILENAME PH-6-BLDG-BDWG	REV.
SCALE: 1" = 50'		DATE: 08/21/02	SHEET 2 of 5		

A-1520

A-1520

JAMES CITY COUNTY TP 33-3-01-27
NOW OR FORMERLY
ARTCRAFT - STRATFORD, L.C.
D.B. 649 P. 470

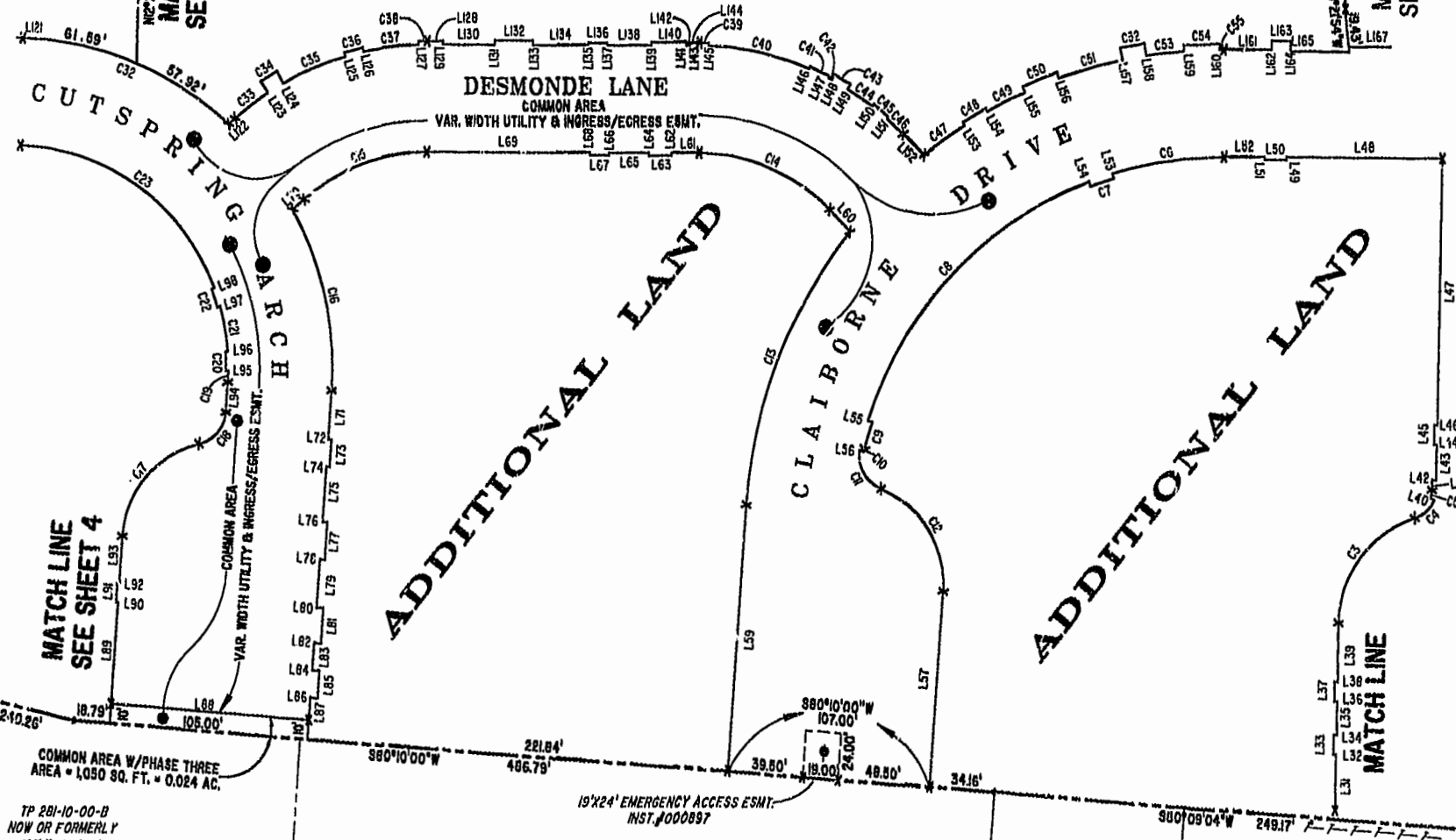
JAMES CITY COUNTY TP 33-3-01-28
NOW OR FORMERLY
GARY E. & CATHY L. NESTER
D.B. 509 P. 735

JAMES CITY COUNTY TP 33-3-01-29
NOW OR FORMERLY
GARY E. & CATHY L. NESTER
D.B. 619 P. 683

ADDITIONAL LAND

ADDITIONAL LAND

ADDITIONAL LAND



MATCH LINE
SEE SHEET 4

MATCH LINE
SEE SHEET 4

MATCH LINE
SEE SHEET 2

MATCH LINE
SEE SHEET 2

MATCH LINE

COMMON AREA W/PHASE THREE
AREA = 1,050 SQ. FT. = 0.024 AC.

TP 281-10-00-B
NOW OR FORMERLY
752 L.L.C.
INST. #980305

19'x24' EMERGENCY ACCESS ESMT.
INST. #000897

TP 282-08-00-001
NOW OR FORMERLY
752 L.L.C.
INST. #980305

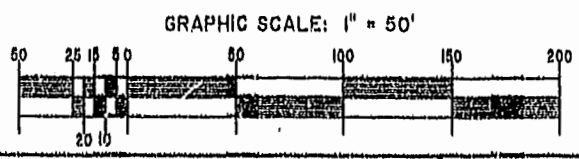
TP 281-10-00-B
NOW OR FORMERLY
752 L.L.C.
INST. #980305

TP 282-08-00-001
NOW OR FORMERLY
752 L.L.C.
INST. #980305

City of Williamsburg & County of James City
Circuit Court: This PLAT was recorded on
September 17, 2002
at 8:27 AM/PM, PB 87, PG 75-77
DOCUMENT # 021689
BETSY B. WOODRIDGE, CLERK
C. Stewart, Dep. Clerk

EXHIBIT "A"
CLAIBORNE
(A CONDOMINIUM COMMUNITY)
PHASE SIX

CITY OF WILLIAMSBURG, VIRGINIA



Hassell & Folkes, P.C. Engineers Surveyors Planners Chesapeake, VA 23320 (757) 547-9531	SIZE C	CONTRACT NO H40/18	FILENAME -8-8L06-10V8	REV.
SCALE: 1" = 50'	DATE: 08/21/02	SHEET 3 of 8		

PHASE SIX
BLDG. 11
SEE DETAIL ON SHEET I

JAMES CITY COUNTY TP 33-3-01-27
NOW OR FORMERLY
ARTCRAFT - STRATFORD, L.C.
D.B.649 P.470

CITY OF WILLIAMSBURG CORPORATE LIMITS
JAMES CITY COUNTY CORPORATE LIMITS
86' PIPELINE ESMT. CITY OF NEWPORT NEWS
D.B. 78 P. 421 & D.B. 78 P. 491

ADDITIONAL LAND

ADDITIONAL LAND

CUTSPRING ARCH
VAR. WIDTH UTILITY & INGRESS/EGRESS ESMT.

JAMES CITY COUNTY TP 33-3-01-36
NOW OR FORMERLY
PHILIP RICHARDSON CO., INC.
P.B. 69 P. 98
INST. #980012581

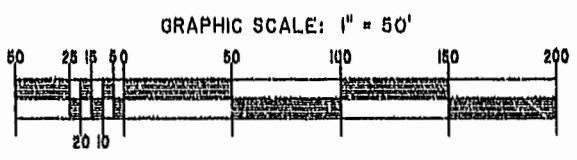
TP 281-03-00-A
NOW OR FORMERLY
SALAH & CHANG TURKMANI
D.B. 94 P. 92

TP 281-10-00-B
NOW OR FORMERLY
752 L.L.C.
INST. #900305

TP 282-08-00-001
NOW OR FORMERLY
752 L.L.C.
INST. #980305

EXHIBIT "A"
CLAIBORNE
(A CONDOMINIUM COMMUNITY)
PHASE SIX
CITY OF WILLIAMSBURG, VIRGINIA

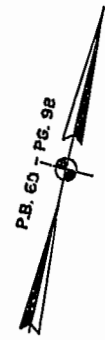
City of Williamsburg & County of James City
Circuit Court: This PLAT was recorded on
September 19, 2002
at 10:27 AM PM, PG 87 PG 73-77
DOCUMENT # 021689
BETSY B. WOOLRIDGE, CLERK
C. W. New Fall, Dep. Clerk



Hassell & Folkes, P.C.	SIZE	CONTRACT NO	DISK/BOX	FILENAME	REV.
...linears Surveyors Planners Chesapeake, VA. 23320 (757)547-9531	C	1148/16	1148/16	PH-S-BLDG-10W8	
SCALE: 1" = 80'		DATE: 08/21/02		SHEET 4 of 8	

A-1520

A-1520



021689

87 PAGE 77

LINE TABLE - UTILITY & INGRESS/EGRESS EASEMENT

CURVE TABLE - UTILITY & INGRESS/EGRESS EASEMENT

Table with columns: LINE, BEARING, DISTANCE. Rows L1 through L77.

Table with columns: LINE, BEARING, DISTANCE. Rows L185 through L192.

Table with columns: CURVE, RADIUS, ARC LENGTH, DELTA ANGLE, TANGENT, CHORD BEARING, LENGTH. Rows C1 through C63.

City of Williamsburg & County of James City Circuit Court: This PLAT was recorded on September 17, 2002 at 10:27 AM, PG 87 of 122 DOCUMENT # 021689 BETSY B. WOODRIDGE, CLERK C. C. STEWART, Dep. Clerk



EXHIBIT "A" CLAIBORNE (A CONDOMINIUM COMMUNITY) PHASE SIX

Table with columns: ENGINEER, CONTRACT NO, DISK/BOX, FILENAME, REV. Includes Hassell & Polkes, P.C. and other project details.