

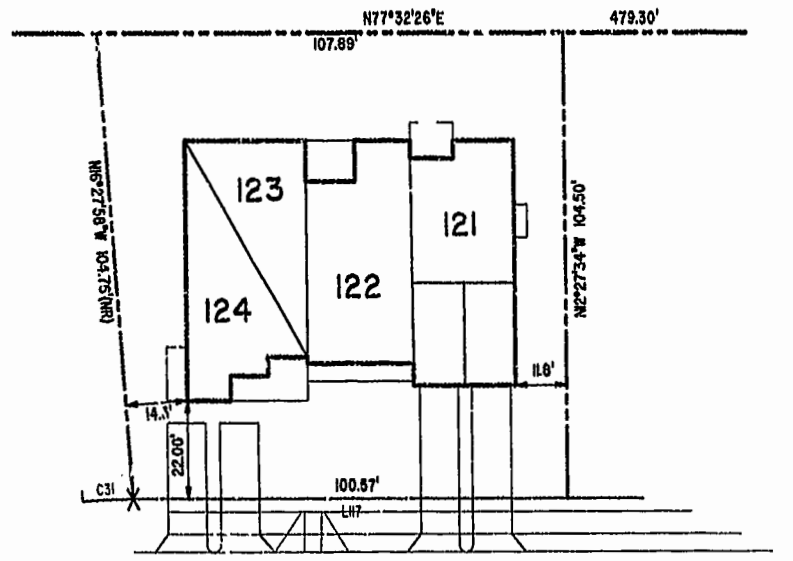
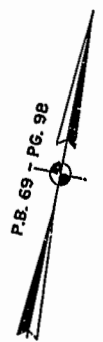
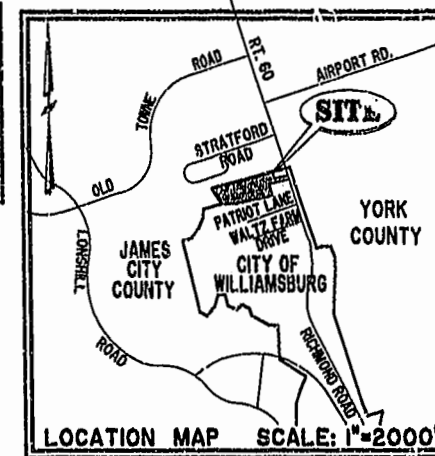
#021688

87 PAGE 68

NOTES:

1. THE TOTAL AREA OF SITE IS 644,256 SQ.FT. (14.790 AC.) OF WHICH 395,287 SQ.FT. (9.074 AC.) IS ADDITIONAL LAND.
2. THE AREA OF THE SUBMITTED LAND IS 248,969 SQ.FT. (5.716 AC.)
3. THE COMMON AREA IS TO BE THE RESPONSIBILITY OF THE CONDOMINIUM ASSOCIATION AND HAS A TOTAL AREA OF 4.436 AC.

BUILDING NUMBER	UNIT NUMBER	UNIT TYPE*	STREET ADDRESS
12	12-121	D	121 CUTSPRING ARCH
12	12-122	C(OPTION)	122 CUTSPRING ARCH
12	12-123	A3	123 CUTSPRING ARCH
12	12-124	E3	124 CUTSPRING ARCH



VAR. WIDTH UTILITY & INGRESS/EGRESS ESMT.
CUTSPRING ARCH
 COMMON AREA

PHASE FIVE
BLDG. 12

AREA = 10,892 SQ. FT. = 0.250 AC.

SCALE: 1" = 25'

City of Williamsburg & County of James City
 Circuit Court: This PLAT was recorded on
September 17, 2002
 at 10:25 AM, PH 877, PCL 872
 DOCUMENT # 021688
 BETSY B. WOOLRIDGE, CLERK
C. Allen Fall, Dep. Clerk

I CHRISTOPHER D. CAPOZZI, A CERTIFIED LAND SURVEYOR, DO HEREBY CERTIFY THAT THIS PLAT IS ACCURATE, AND THAT IT COMPLIES WITH THE PROVISIONS OF SECTION 55 - 79.58A OF THE CODE OF VIRGINIA. I FURTHER HEREBY CERTIFY THAT ALL UNITS OR PORTIONS THEREOF DEPICTED HEREON HAVE BEEN SUBSTANTIALLY COMPLETED.

THE UNDERSIGNED CERTIFIED LAND SURVEYOR CERTIFIES THAT HE HAS READ SECTION 55 - 79.58B OF THE CODE OF VIRGINIA, AND FINDS THESE PLANS TO BE ACCURATE AND IN COMPLIANCE WITH THE CODE. I FURTHER CERTIFY THAT ALL UNITS OR PORTIONS THEREOF DEPICTED HEREON HAVE BEEN SUBSTANTIALLY COMPLETED.

9-9-02
 DATE _____
 LAND SURVEYOR No. 002398

				DRAWN BY: HJS DATE: 08/21/02		EXHIBIT "A" CLAIBORNE (A CONDOMINIUM COMMUNITY) PHASE FIVE CITY OF WILLIAMSBURG, VIRGINIA	
		CHECKED BY: HBA DATE: 08/26/02		GOMP BY: HBA DATE: 08/31/01			
SIZE: C	CONTRACT NO: 90132	DISK/BOX: 114F/16	FILENAME: PH-5-BLDG-12.DWG	REV.			
SCALE: N/A		DATE: 08/21/02		SHEET 1 of 5			

A-1520

A-1520

#021688

87 PAGE 69

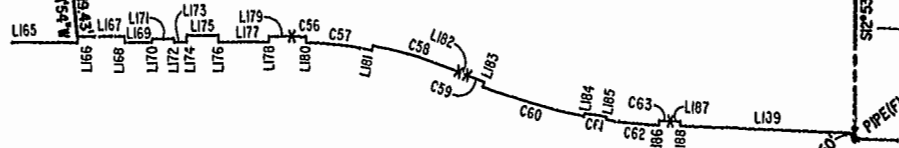
JAMES CITY COUNTY TP 33-3-01-29
NOW OR FORMERLY
GARY E. & CATHY L. NESTER
D.B.619 P.603

JAMES CITY COUNTY TP 33-3-01-24
NOW OR FORMERLY
GOLDEN KNIGHTS, INC.
D.B.568 P.316

P.B. 69 - PG. 98

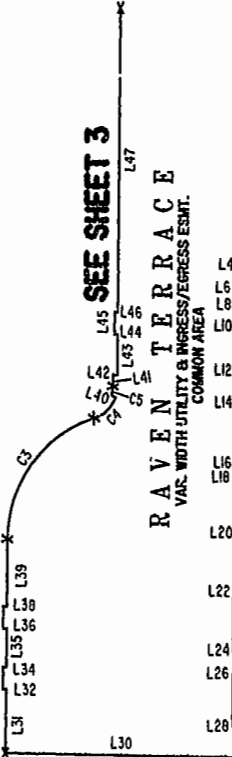
MATCH LINE
SEE SHEET 3

ADDITIONAL LAND



MATCH LINE
SEE SHEET 3

RAVEN TERRACE
VAR. WIDTH UTILITY & INGRESS/EGRESS ESMT.
COMMON AREA



ADDITIONAL LAND

CHELSEA GCA REALTY PARTNERSHIP, L.P.
TP 202-04-00-001
NOW OR FORMERLY
D.B.106 P.407

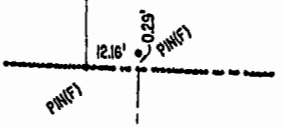
CLAIBORNE DRIVE
VAR. WIDTH UTILITY & INGRESS/EGRESS ESMT.
COMMON AREA

MARK II INVESTMENTS LTD.
TP 252-01-00-009
NOW OR FORMERLY
D.P.120 P.671

CHELSEA GCA REALTY PARTNERSHIP, L.P.
TP 202-05-00-101
NOW OR FORMERLY
D.B.113 P.693

U.S. RTE. 60
RICHMOND ROAD
P.B. 69 - PG. 98

DETAIL
N.T.S.

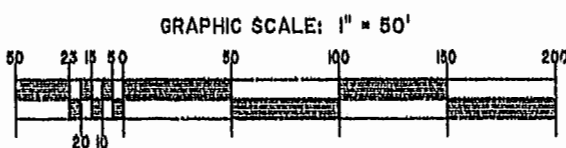


500°09'04"W 249.17' FLD
S77°14'03"W 150.89'

TP 202-08-00-001
NOW OR FORMERLY
752 L.L.C.
INST. #980305

City of Williamsburg & County of James City
Circuit Court: This PLAT was recorded on
September 14, 2002
at 10:25 AM P.M. PB 87 PG 69
DOCUMENT # 021688
BETSY B. WOOLHIDGE, CLERK
C. Newell Dep. Clerk

EXHIBIT "A"
CLAIBORNE
(A CONDOMINIUM COMMUNITY)
PHASE FIVE



Hassell & Polkes, P.C. Engineers Surveyors Planners Chesapeake, VA. 23320 (757)547-9531	SIZE	CONTRACT NO	DISK/BOX	FILENAME	REV.
	C		114F/16	PH-5-8L00-12DWG	
SCALE: 1" = 50'		DATE: 08/21/02		SHEET 2 of 5	

A-1520

A-1520

#021688

87 PAGE 70

JAMES CITY COUNTY TP 33-3-01-27
NOW OR FORMERLY
ARTCRAFT - STRATFORD, L.C.
D.B. 649 P. 470

JAMES CITY COUNTY TP 33-3-01-28
NOW OR FORMERLY
GARY E. & CATHY L. NESTER
D.B. 509 P. 735

JAMES CITY COUNTY TP 33-3-01-29
NOW OR FORMERLY
GARY E. & CATHY L. NESTER
D.B. 619 P. 683

P.B. 69 - PG. 98

N77°32'26"E 479.30'

PPE(F)

N76°09'49"E 276.18'

PPE(F)

N76°09'06"E 199.90'

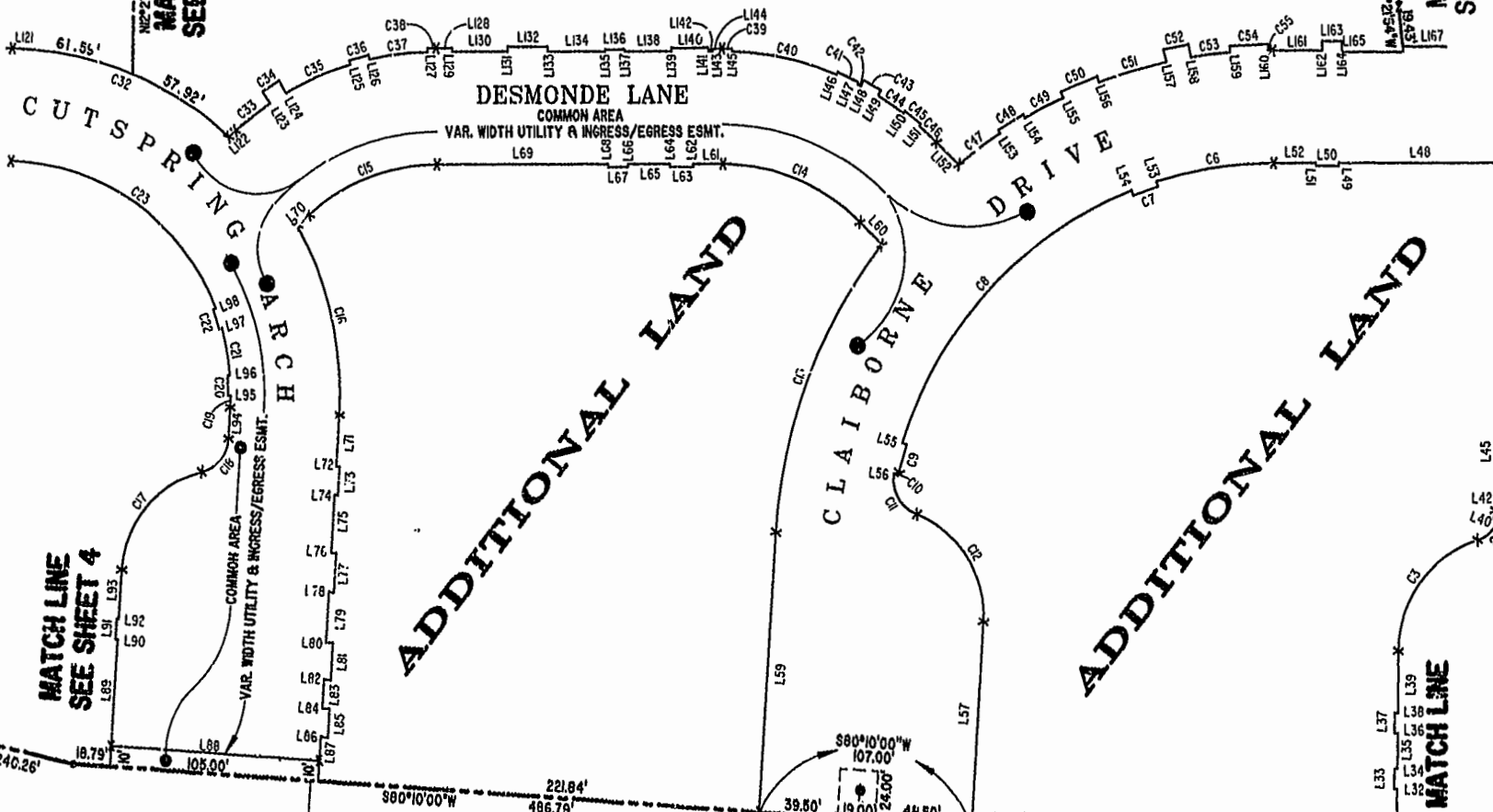
159.59'

N76°09'05"E 322.06'

163.47'

PPE(F)

ADDITIONAL LAND



MATCH LINE
SEE SHEET 4

MATCH LINE
SEE SHEET 4

MATCH LINE
SEE SHEET 2

MATCH LINE
SEE SHEET 2

MATCH LINE

S89°22'17"W 240.26'

TP 281-10-00-B
NOW OR FORMERLY
752 L.L.C.
INST. #980305

19'x24' EMERGENCY ACCESS ESMT.
INST. #000897

TP 282-08-00-001
NOW OR FORMERLY
752 L.L.C.
INST. #980305

TP 281-10-00-B
NOW OR FORMERLY
752 L.L.C.
INST. #980305

TP 282-08-00-001
NOW OR FORMERLY
752 L.L.C.
INST. #980305

City of Williamsburg & County of James City
Circuit Court: This PLAT was recorded on
September 19, 2002
at 10:25 AM, P.B. 87, PG. 6872
DOCUMENT # 021688
BETSY B. WOOLRIDGE, CLERK
C. New Fall, Dep. Clerk

GRAPHIC SCALE: 1" = 50'

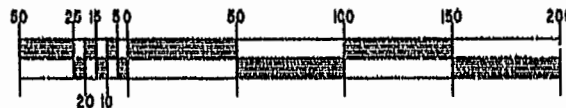


EXHIBIT "A"
CLAIBORNE
(A CONDOMINIUM COMMUNITY)
PHASE FIVE

CITY OF WILLIAMSBURG, VIRGINIA

Hassell & Polkes, P.C. Engineers Surveyors Planners Chesapeake, VA. 23320 (757) 547-9531	SCALE: 1" = 50'	DATE: 08/21/02	SHEET 3 of 8
---	-----------------	----------------	--------------

A-1520

A-1520

#021688

87 PAGE 71

PHASE FIVE BLDG. 12

SEE DETAIL ON SHEET I

JAMES CITY COUNTY TP 33-3-01-27
NOW OR FORMERLY
ARTCRAFT - STRATFORD, L.C.
D.B.649 P.470

ADDITIONAL LAND

ADDITIONAL LAND

MATCH LINE
SEE SHEET 3

MATCH LINE
SEE SHEET 3

JAMES CITY COUNTY TP 33-3-01-30
NOW OR FORMERLY
PHILIP RICHARDSON CO., INC.
P.B. 69 P. 98
INST. #980012581

TP 281-03-00-A
NOW OR FORMERLY
SALAH & CHANG TURKMANI
D.B. 94 P. 92

TP 281-10-00-B
NOW OR FORMERLY
752 L.L.C.
INST. #980305

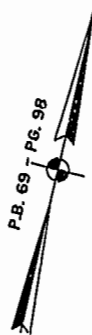
TP 282-08-00-001
NOW OR FORMERLY
752 L.L.C.
INST. #980305

EXHIBIT "A"
CLAIBORNE
(A CONDOMINIUM COMMUNITY)
PHASE FIVE

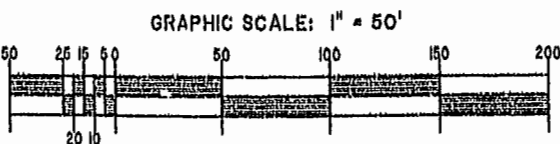
CITY OF WILLIAMSBURG, VIRGINIA

Hassell & Folkes, P.C. Engineers Surveyors Planners Chesapeake, VA. 23320 (757)547-9531	SIZE C	CONTRACT NO 114F/16	DISK/BOX PH-5-BLDG-12.DWG	FILENAME PH-5-BLDG-12.DWG	REV.
--	-----------	------------------------	------------------------------	------------------------------	------

SCALE: 1" = 80' DATE: 08/21/02 SHEET 4 of 8



P.B. 69 P. 98



VIRGINIA City of Williamsburg & County of James City
This PLAT was recorded on
at Circuit Court: This PLAT was recorded on
Se September 12, 2002
at 10:25 AM P.B. 87 P.C. 128-22
DOCUMENT # 021688
TE BETSY B. WOOLRIDGE, CLERK
BY C. S. Harris, Fee Dep. Clerk

A-1520

A-1520

#020021688

87 PAGE 72

LINE TABLE - UTILITY & INGRESS/EGRESS EASEMENT

CURVE TABLE - UTILITY & INGRESS/EGRESS EASEMENT

Table with columns: LINE, BEARING, DISTANCE. Rows L1 through L77.

Table with columns: LINE, BEARING, DISTANCE. Rows L78 through L154.

Table with columns: LINE, BEARING, DISTANCE. Rows L155 through L192.

Table with columns: CURVE, RADII, ARC LENGTH, DELTA ANGLE, TANGENT, CHORD BEARING, LENGTH. Rows C1 through C83.

VIRGINIA - CITY OF WILLIAMSBURG & COUNTY OF JAMES CITY... This PLAT was recorded on 12 September 1992...



EXHIBIT "A" CLAIBORNE (A CONDOMINIUM COMMUNITY) PHASE FIVE

Table with columns: Hassell & Polkes, P.C., CONTRACT NO, DISK/BOX, FILENAME, REV., SCALE, DATE, SHEET.